

Grooved End Valves

Victaulic®, the originator and leading manufacturer of grooved end products, has a full line of butterfly, ball, check and plug valves for nearly every market and almost any application. Victaulic valves are known for their reliability and ease of installation. As an ISO 9001 certified company, Victaulic manufactures its products to meet or exceed your piping requirements.

Victaulic valves are available for carbon steel, stainless steel, copper and ductile iron piping systems. Vic-Plug™ (Series 365) and Vic-Check® (Series 317) valves are specifically designed to meet AWWA ductile iron pipe standards.



Valve Size		Butterfly						Globe @	Combo	Check				Ball †	Plug ‡	Fire Protection			
Nom. Dia. Inches mm	Actual Out. Dia. Inches mm	Vic® 300	Series 608 Copper	Series 706/709	Series 763 Stain.	Series 700	3-Way	Circuit Balance Series 785 - 789	Tri-Service	Venturi Check Series 779	AWWA Vic-Check® Series 317	Vic-Check Series 716	# Swinger® Series 712/713	Vic-Ball® Series 721/723	AWWA Vic-Plug™ Series 365/377	FireLock™ Series 728 ††	BFV Series 705W	FireLock™ Check Series 717, 717R	FireLock Actuated Check Series 751, 756, 758
DATA SHEET		08.02	08.17	08.03	17.23	08.05	08.06	08.16	08.09	08.10	23.10	08.08	08.11	08.13	23.06, 08.12	10.17	10.06	10.08	10.30, 10.35, 10.40, 10.50

PRESSURE RATING – PSI/kPa

1½ 40	1.900 48,3	-	-	-	-	200 1420	200 1420	@ @	-	-	-	-	-	1000 6895	-	350 2410	-	-	300 2065
2* 50	2.375 60,3	300 2065	-	-	300 2065	200 1420	300 2065	@ @	-	-	-	-	300 2065	1000 6895	-	350 2410	300 2065	-	300 2065
2½ 65	2.875 73,0	300 2065	300 2065	-	300 2065	200 1420	300 2065	@ @	300 2065	-	-	300 2065	300 2065	1000 6895	-	-	300 2065	-	300 2065
3* 80	3.500 88,9	300 2065	300 2065	-	300 2065	200 1420	300 2065	@ @	300 2065	-	175 1200	300 2065	300 2065	1000 6895	175 1200	-	300 2065	-	300 2065
4* 100	4.500 114,3	300 2065	300 2065	-	300 2065	200 1420	300 2065	@ @	300 2065	300 2065	175 1200	300 2065	300 2065	1000 6895	175 1200	-	300 2065	250 1725	300 2065
5 125	5.563 141,3	300 2065	300 2065	-	300 2065	200 1420	300 2065	@ @	300 2065	300 2065	-	300 2065	-	-	-	-	300 2065	250 1725	-
6 150	6.625 168,3	300 2065	300 2065	-	300 2065	200 1420	300 2065	@ @	300 2065	300 2065	175 1200	300 2065	-	1000 6895	175 1200	-	300 2065	250 1725	300 2065
8 200	8.625 219,1	300 2065	-	-	300 2065	-	300 2065	@ @	300 2065	300 2065	175 1200	300 2065	-	-	175 1200	-	300 2065	250 1725	300 2065
10 250	10.750 273,0	300 2065	-	-	300 2065	-	300 2065	@ @	300 2065	300 2065	175 1200	300 2065	-	-	175 1200	-	+	-	-
12 300	12.750 323,9	300 2065	-	-	300 2065	-	300 2065	@ @	300 2065	300 2065	175 1200	300 2065	-	-	175 1200	-	+	-	-
14 350	14.000 355,6	-	-	175 § 1200	-	-	175 1200	-	175 1200	300 2065	-	300 2065	-	-	150 1035	-	-	-	-
16 400	16.000 406,4	-	-	175 § 1200	-	-	175 1200	-	-	-	-	-	-	-	150 1035	-	-	-	-
18 450	18.000 457,2	-	-	175 § 1200	-	-	175 1200	-	-	-	-	-	-	-	150 1035	-	-	-	-
20 500	20.000 508,0	-	-	175 § 1200	-	-	175 1200	-	-	-	-	-	-	-	-	-	-	-	-
24 600	24.000 609,6	-	-	175 § 1200	-	-	175 1200	-	-	-	-	-	-	-	-	-	-	-	-

* Available as Three Port Diverter. + Contact Victaulic for details.
 ‡ Vic-Plug made to AWWA sizes, adapts to IPS with Transition coupling Style 307.
 † Series 722 brass body ball valve available in ¼" through 2" size. Series 522, Series 569 and Series 589 Pressfit Ball valves are available.
 # Series 713 rated at 1000 psi (6900 kPa).
 @ TA Hydraulics Circuit Balancing valves available from ½ - 12" (15 - 300 mm). Series 785 - 125 psi (862 kPa); Series 786 & 787 - 300 psi (2065 kPa); Series 788 - 250 psi (1725 kPa); Series 789 - 350 psi (2415 kPa).
 § Series 706 available for 300 psi (2065 kPa) service.
 †† FireLock Series 728 ball valve also available in 1" and 1¼" threaded or 1¼" grooved. Rated to 350 psi (2410 kPa).

VICTAULIC® IS AN ISO 9001 CERTIFIED COMPANY

Victaulic Company of America Phone: 1-800-PICK-VIC (1-800-742-5842) Fax: 610-250-8817 e-mail: pickvic@victaulic.com	Victaulic Company of Canada Phone: 416-675-5575 Fax: 416-675-5565 e-mail: viccanada@victaulic.com	Victaulic Europe Phone: 32-9-381-1500 Fax: 32-9-380-4438 e-mail: viceuro@victaulic.be	Victaulic America Latina Phone: 610-559-3300 Fax: 610-559-3608 e-mail: vical@victaulic.com	Victaulic Asia Pacific Phone: 65-6235-3035 Fax: 65-6235-0535 e-mail: vicap@victaulic.com
---	---	---	--	--

Butterfly Valves

Vic-300, Series 763 and Series 608

- Rated to 300 psi (2065 kPa) WOG service
- Vic-300 size range 2 - 12" (50 - 300 mm)
- Series 608 for copper tubing from 2½ - 6" (65 - 150 mm)
- Series 763 for stainless steel 2 - 12" (50 - 300 mm)
- Available disc coatings - EPDM (water); nitrile (petroleum); fluor elastomers (corrosives and aromatics)



Request 08.02 (Vic-300); 17.05 (stainless); or 22.05 (copper) for submittal.

Series 700

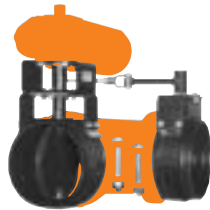
- 1½ - 6" (40 - 150 mm) sizes
- Rated to 200 psi (1400 kPa)
- Rubber-lined body
- Dead-end service to fully rated working pressure
- Low-profile version available



Request 08.05 for submittal.

Three Way Valves

- Available for 2 - 24" (50 - 600 mm) sizes
- For blending, diverting, and mixing
- Factory assembled and adjusted for intended service



Request 08.06 for submittal.

Large Diameter Butterfly Valves

Series 706 and Series 709

- For 14 - 24" (350 - 600 mm) piping systems
- PPS coated ductile iron disc; nickel plated optional
- Available seats - EPDM for water services; nitrile for petroleum services
- Series 706 is rated to 300 psi (2065 kPa)
- Series 709 is rated to 175 psi (1200 kPa)

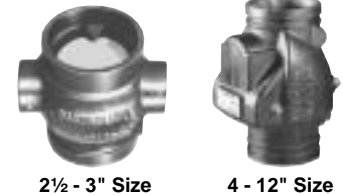


Request 08.17 (300 PSI) or 08.03 (175 PSI) for submittal.

Check Valves

Series 716

- Sizes 2½ - 14" (65 - 350 mm)
- Rated for 300 psi (2065 kPa)
- Installs vertically or horizontally
- Welded-in nickel seat



Request 08.08 for submittal.

Series 779

- Venturi check for flow measurements
- Sizes 4 - 14" (100 - 350 mm)
- Rated to 300 psi (2065 kPa)
- Drilled and tapped for convenient meter connection
- Installs vertically or horizontally

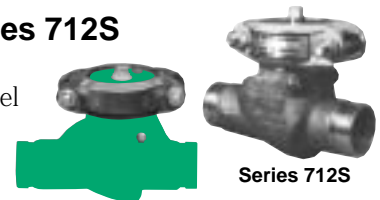


Request 08.10 for submittal.

Swing Check Valves

Series 712 and Series 712S

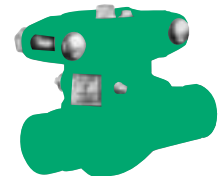
- Sizes 2 - 4" (50 - 100 mm), stainless steel 2" (60,3 mm) size only
- Rated to 300 psi (2065 kPa)
- Two-bolt closure access eases in-line service when needed
- Series 712 ductile iron; Series 712S Type 316 stainless steel



Request 08.11 (ductile) or 17.08 (stainless) for submittal.

Series 713

- 2" (50 mm) size only
- Rated to 1000 psi (6900 kPa)
- Two-bolt closure access eases in-line service when needed
- Rugged ductile iron body



Request 08.11 for submittal.

Valve Automation

Victaulic quarter-turn valves are designed to easily accommodate all types of remote power operators.

Victaulic valves can be provided with various electric, pneumatic or hydraulic actuation. A three-way standard butterfly configuration is easily achieved with the appropriate linkage and actuation.

Specific manufacturer's actuators should be specified if desired. Contact Victaulic for the nearest Victaulic authorized valve automation center.

Request 08.07 for details.

Ball Valves

Series 721 and Series 721S

- Sizes 1½ - 6" (40 - 150 mm), stainless steel 2 - 6" (50 - 150 mm) sizes only
- Rated for 1000 psi (6895 kPa) WOG service
- Standard port, end entry valve
- Series 721S supplied with Type 316 stainless body



Request 08.13 (ductile) or 17.07 (stainless) for submittal.

Series 723 and Series 723S

- Available in 2" (50 mm) size
- Three port diverter valve with common bottom inlet
- Diverting 90° left or right, 180° operation available
- Rated for 600 psi (4135 kPa) WOG service
- Series 723S supplied with Type 316 stainless body



Request 08.14 (ductile) or 17.07 (stainless) for submittal.

Series 722

- Sizes ¼ - 2" (8 - 50 mm)
- Threaded end valve for small diameter piping
- UL Listed and FM Approved to 300 psi (2065 kPa) for fire protection services
- Rated to 600 psi (4135 kPa) WOG service

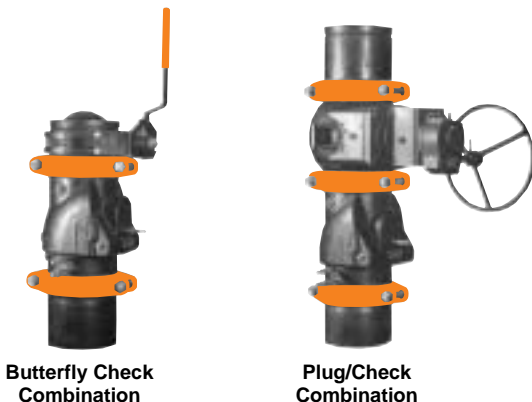


Request 08.15 for submittal.

Triple Service Valves

- Available in butterfly/check and plug/check combinations
- Butterfly/Check combination rated to 300 psi (2065 kPa)
- Sizes from 2½ to 14" (65 - 350 mm)
- Plug/Check combination rated to 175 psi (1200 kPa)
- Sizes from 3 to 14" (80 - 350 mm)

Request 08.09 for submittal.



Butterfly Check Combination

Plug/Check Combination

Balancing Plug Valves

Series 377

- Balancing valve for PHA Service
- Rated to 175 psi (1200 kPa)
- Joins to steel systems using Style 307 Transition couplings*
- Sizes from 3 - 14" (80 - 350 mm)



Request 08.12 for submittal.

AWWA Plug Valves

Series 365

- Only grooved end plug valve that conforms to AWWA C-606 (groove dimensions) and C-509 (center to end dimensions)
- Sizes 3 - 12" (80 - 300 mm) rated to 175 psi (1200 kPa)
- Sizes 14, 16 and 18" (350, 400 and 450 mm) rated to 150 psi (1032 kPa)
- Welded-in nickel seat
- Self lubricating bearings prevent seizing



Request 23.06 for submittal.

AWWA Check Valves

Series 317

- Grooved end check valve conforming to AWWA C-508 requirements
- Sizes from 3 - 12" (80 - 300 mm)
- Conforms to ANSI/AWWA C-606 rigid groove specifications
- Metallic seats with elastomer seats optional
- Lever and counterweight, lever and spring, adjustable air cushions optionally available

Request 23.09 for submittal.



Series 317 Bare

Series 317 Spring and Lever

Series 317 Weight and Lever

Series 317 Air Cushion

Fire Protection Valves

Butterfly Valves

Series 705W

- UL Listed/FM Approved valve for fire protection services
- Rated to 300 psi (2065 kPa)
- Series 705W 2½ - 12" (65 - 300 mm) sizes provided with indoor/outdoor actuator
- Exceeds UL Butterfly Specification 1091 and FM Approval Standard 1112



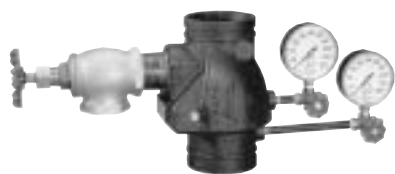
Request 10.06 for submittal.

Check Valves

Series 717 and Series 717R

- Sizes 2½ - 12" (65 - 300 mm)
- Rated to 250 psi (1725 kPa)
- UL Listed/FM Approved for fire protection services
- Series 717R includes a riser check kit for 4 - 8" sizes
- Installs vertically or horizontally
- Welded-in nickel seat

Request 10.08 (Series 717) or 10.09 (Series 717R) for submittal.



Series 717R



Series 717

Ball Valves

Series 728

- Standard port, end-entry valve
- Sizes 1 - 2" threaded; 1¼ - 2" grooved
- UL/ULC Listed and FM Approved to 350 psi (2410 kPa) for fire protection services

Request 10.17 for submittal.



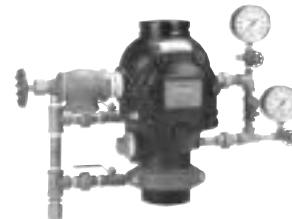
Fire Protection Automated Check Devices

- Less than ½ the weight of competitive valves
- Rated to 300 psi (2100 kPa)
- Low pressure differential
- Available in 1½ - 6" (40 - 150 mm) sizes with grooved ends, flanged inlet in 4 & 6" (100 & 150 mm) sizes
- Easy in-line service
- Available bare, fully trimmed or with trim package.

Alarm Check Valve Series 751

- Optional Retard Chamber available
- For both horizontal or vertical installation

Request 10.30 for submittal.



Dry Check Valve Series 756

- Low (1 to 8) air to water pressure differential
- Automatic clapper reset

Request 10.35 for submittal.



Deluge Check Valve Series 758D

- Automatic clapper reset
- Automatic wet, automatic dry or electric release trim

Request 10.40 for submittal.



Precision Check Valve Series 758P

- Available non-interlock, single or double interlock
- Automatic clapper reset

Request 10.50 for submittal.

