

Victaulic® Brass Body Ball Valve

Series 722L



1.0 PRODUCT DESCRIPTION

Available Sizes

- ¼ – 2"/DN8 – DN50

Maximum Working Pressure (At Room Temperature)

- ¼ - 1 ¼ DN8 - DN32: 600 psi/4137 kPa/41 bar
- 1 ½"/DN40: 500 psi/3447 kPa/34 bar
- 2"/DN50: 350 psi/2413 kPa/24 bar

Operating Temperature Range

- 0°F to +180°/-18°C to +82°C

Function

- Full port, female threaded end valve for on/off service in potable water systems.

2.0 CERTIFICATION/LISTINGS



NSF Certified in accordance with ANSI/NSF 61 for cold +73°F/+23°C and hot +140°F/+60°C potable water service and ANSI/NSF 372.

ALWAYS REFER TO ANY NOTIFICATIONS AT THE END OF THIS DOCUMENT REGARDING PRODUCT INSTALLATION, MAINTENANCE OR SUPPORT.

System No.		Location	
Submitted By		Date	

Spec Section		Paragraph	
Approved		Date	

3.0 SPECIFICATIONS – MATERIAL

Series 722L Brass Body Ball Valve

Body: Forged brass, per CW 509L.

Ball: Brass, chrome plated, per CW 510L.

Stem: Brass, chrome plated, per CW 510L.

Seat: Polytetrafluoroethylene (PTFE).

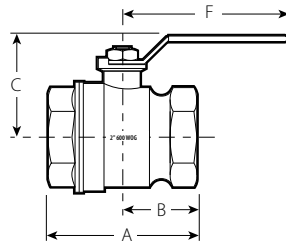
Stem Seal: Double O-rings rubber and PTFE friction ring.

Handle: Low carbon steel, zinc or cadmium plated, with vinyl grip.

Handle Hex Nut: Carbon steel, zinc plated.

4.0 DIMENSIONS

Series 722L Brass Body Ball Valve



Size		Dimensions				Weight
Nominal inches DN	Nominal Actual Outside inches mm	A inches mm	B inches mm	C inches mm	F inches mm	Approximate (Each) lb kg
1/4 DN8	0.540 13.7	1.54 39	0.77 20	1.03 26	1.65 42	0.2 0.1
3/8 DN10	0.675 17.1	1.77 45	0.88 22	1.28 33	3.07 78	0.3 0.1
1/2 DN15	0.840 21.3	2.13 54	1.06 27	1.33 34	3.07 78	0.4 0.2
3/4 DN20	1.050 26.9	2.44 62	1.22 31	1.79 45	3.78 96	0.7 0.3
1 DN25	1.315 33.7	2.95 75	1.48 37	1.95 50	3.78 96	1.0 0.5
1 1/4 DN32	1.660 42.4	3.31 84	1.65 42	2.17 55	3.78 96	1.5 0.7
1 1/2 DN40	1.900 48.3	3.66 93	1.83 46	2.68 68	5.43 138	2.1 1.0
2 DN50	2.375 60.3	4.21 107	2.11 53	2.89 73	5.43 138	2.4 1.1

5.0 PERFORMANCE

C_v/K_v Values:

C_v/K_v values for flow of water at 60°F/16°C are shown in the table below. For additional details contact Victaulic.

Formulas for C_v and K_v values

$$\Delta P = \frac{Q^2}{C_v^2}$$

$$Q = C_v \times \sqrt{\Delta P}$$

Where:

Q = Flow (GPM)
 ΔP = Pressure Drop (psi)
 C_v = Flow Coefficient

$$\Delta P = \frac{Q^2}{K_v^2}$$

$$Q = K_v \times \sqrt{\Delta P}$$

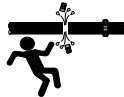
Where:

Q = Flow (m³/hr)
 ΔP = Pressure Drop (Bar)
 K_v = Flow Coefficient

Size		Flow
Nominal inches DN	Actual Outside Diameter inches mm	C _v K _v
1/4 DN8	0.540 13.7	7.7 6.7
3/8 DN10	0.675 17.1	7.8 6.7
1/2 DN15	0.840 21.3	14.7 12.7
3/4 DN20	1.050 26.9	28.5 24.7
1 DN25	1.315 33.7	56.3 48.7
1 1/4 DN32	1.660 42.4	114.0 98.6
1 1/2 DN40	1.900 48.3	162.0 140.1
2 DN50	2.375 60.3	245.0 211.9

6.0 NOTIFICATIONS

WARNING



- Read and understand all instructions before attempting to install, remove, adjust, or maintain any Victaulic piping products.
- Depressurize and drain the piping system before attempting to install, remove, adjust, or maintain any Victaulic piping products.
- Wear safety glasses, hardhat, and foot protection.

Failure to follow these instructions could result in death or serious personal injury and property damage.

7.0 REFERENCE MATERIALS

[I-100: Victaulic® Field Installation Handbook](#)

User Responsibility for Product Selection and Suitability

Each user bears final responsibility for making a determination as to the suitability of Victaulic products for a particular end-use application, in accordance with industry standards and project specifications, and the applicable building codes and related regulations as well as Victaulic performance, maintenance, safety, and warning instructions. Nothing in this or any other document, nor any verbal recommendation, advice, or opinion from any Victaulic employee, shall be deemed to alter, vary, supersede, or waive any provision of Victaulic Company's standard conditions of sale, installation guide, or this disclaimer.

Intellectual Property Rights

No statement contained herein concerning a possible or suggested use of any material, product, service, or design is intended, or should be constructed, to grant any license under any patent or other intellectual property right of Victaulic or any of its subsidiaries or affiliates covering such use or design, or as a recommendation for the use of such material, product, service, or design in the infringement of any patent or other intellectual property right. The terms "Patented" or "Patent Pending" refer to design or utility patents or patent applications for articles and/or methods of use in the United States and/or other countries.

Note

This product shall be manufactured by Victaulic or to Victaulic specifications. Victaulic recommends all products to be installed in accordance with current IMI TA installation/assembly instructions. Victaulic and IMI TA reserve the right to change product specifications, designs and standard equipment without notice and without incurring obligations.

Installation

Reference should always be made to the current IMI TA installation/assembly instructions for the product you are installing. For coupling and strainer installation, reference should always be made to the [I-100 Victaulic Field Installation Handbook](#) for the product you are installing. Handbooks are included with each shipment of Victaulic products for complete installation and assembly data, and are available in PDF format on our website at www.victaulic.com

Warranty

Refer to the Warranty section of the current Price List or contact Victaulic for details.

Trademarks

Victaulic and all other Victaulic marks are the trademarks or registered trademarks of Victaulic Company, and/or its affiliated entities, in the U.S. and/or other countries.