

Victaulic® Steam Outlet Fitting

No. 826



100.16



Optional Cap/Coupling Assembly

1.0 PRODUCT DESCRIPTION

Available Sizes

- 2 – 8"/DN50 – DN200

Pipe Material

- Carbon steel

Maximum Working Pressure

- For use in saturated steam systems rated up to 200 psi/1379 kPa. Not for use in superheated steam applications. Contact Victaulic for other requirements.
- No. 826 steam outlet fittings utilizing the Victaulic OGS-200 groove profile are designed in accordance with ASME B31.1, ASME B31.3 and ASME B31.9 for saturated steam at 200 psi/1379 kPa.
- For other applications, contact Victaulic.

Function

- Designed specifically for any application where a one-piece manufactured header or manifold is needed to serve as a central connection for distributing a fluid supply in a piping system
- Used in conjunction with couplings, fittings, valves, accessories and pipe which feature ends formed with the Victaulic OGS-200 groove profile (see section 7.0 for Reference Materials)

Pipe Preparation

- Supplied with OGS-200 roll grooved ends

2.0 CERTIFICATION/LISTINGS

Product designed and manufactured under Victaulic's Quality Management System, as certified in accordance with ISO 9001:2008.

ALWAYS REFER TO ANY NOTIFICATIONS AT THE END OF THIS DOCUMENT REGARDING PRODUCT INSTALLATION, MAINTENANCE OR SUPPORT.

System No.		Location	
Submitted By		Date	

Spec Section		Paragraph	
Approved		Date	



3.0 SPECIFICATIONS – MATERIAL

Steel: (specify choice)

Standard: Carbon steel, standard weight, conforming to ASTM A53 Grade B Type E or ASTM A106 Grade B.
Optional: Contact Victaulic with your requirements.

Fitting Coating: (specify choice)

Standard: Unpainted.
Optional: Please list your optional requirements in the box below, and contact Victaulic for availability and pricing.

Optional Cap/Coupling Assembly

Cap Fittings: Cast carbon steel, conforming to ASTM A216 Grade WCB.

Housing: Ductile iron conforming to ASTM A536, Grade 65-45-12.

Housing Coating: Zinc coating.

Seal: Polytetrafluoroethylene (PTFE) composite.

Spring Energizer: Cobalt-chromium-nickel alloy conforming to AMS 5833.

Hex Bolts: ASTM A193, Grade B7, plain finish.

Heavy Hex Nuts: ASTM A194, Grade 2H, plain finish.

Washers: ASTM F436, Type 3, plain finish.

4.0 DIMENSIONAL DETAILS FOR QUOTE

No. 826 Steam Outlet Fitting

Please complete the form below and reference the available pricing to order your standard No. 826 Steam Outlet Fitting. For sizes not listed, please contact Victaulic's Engineered Products department at EP@victaulic.com.

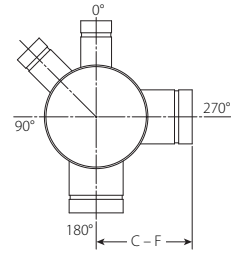
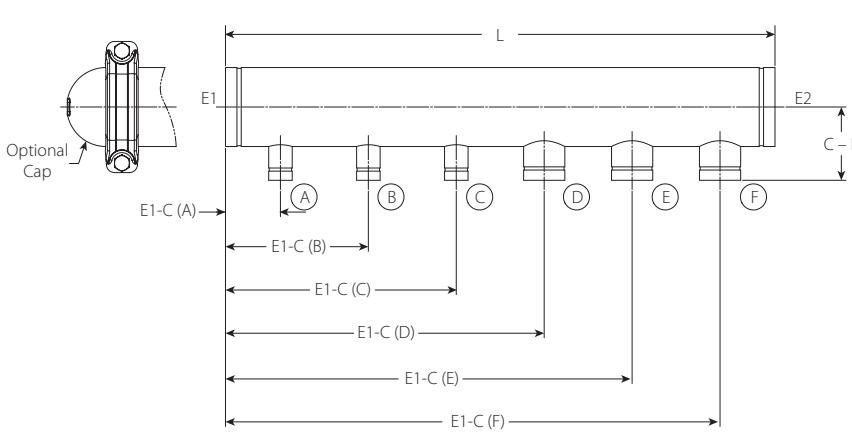
Project Name:		Project Location:	
Contractor Name:			
Contractor Phone Number:		Contractor E-Mail Address:	
Submitted By:		Contractor Signature: (Dimensional Approval for Fabrication)	

Size		Style 870 Coupling Clearance								
Nominal inches DN	Actual Outside Diameter inches mm	2"/DN50 inches mm	2 1/2"/ 73.0 mm inches mm	DN65 inches mm	3"/DN80 inches mm	4"/DN100 inches mm	DN125 inches mm	165.1 mm inches mm	6"/DN150 inches mm	8"/DN200 inches mm
2 DN50	2.375 60.3	9.88 251.0	10.07 255.7	10.13 257.3	7.19 182.6	11.25 285.8	11.94 303.3	12.38 314.5	12.75 323.9	14.32 363.6
2 1/2	2.875 73.0	10.07 255.7	10.25 260.4	10.32 262.0	7.38 187.3	11.44 290.4	12.13 308.0	12.57 319.2	12.94 328.5	14.50 368.3
DN65	3.000 76.1	10.13 257.3	10.32 262.0	10.38 263.7	7.44 189.0	11.50 292.1	12.19 309.6	12.63 320.8	13.00 330.2	14.57 370.0
3 DN80	3.500 88.9	10.44 265.2	10.63 269.9	10.69 271.5	7.75 196.9	11.81 300.0	12.50 317.5	12.94 328.7	13.31 338.1	167.93 4265.3
4 DN100	4.500 114.3	11.25 285.8	11.44 290.4	11.50 292.1	8.56 217.4	12.62 320.5	13.31 338.1	13.75 349.3	14.12 358.6	15.69 398.4
DN125	5.500 139.7	11.94 303.3	12.13 308.0	12.19 309.6	9.25 235.0	13.31 338.1	14.00 355.6	14.44 366.8	14.81 376.2	16.38 415.9
	6.500 165.1	12.38 314.5	12.57 319.2	12.63 320.8	9.69 246.1	13.75 349.3	14.44 366.8	14.88 378.0	15.25 387.4	16.82 427.1
6 DN150	6.625 168.3	12.75 323.9	12.94 328.5	13.00 330.2	10.06 255.5	14.12 358.6	14.81 376.2	15.25 387.4	15.62 396.7	17.19 436.5
8 DN200	8.625 219.1	14.32 363.6	14.50 368.3	14.57 370.0	11.63 295.3	9.88 250.8	16.38 415.9	16.82 427.1	17.19 436.5	18.75 476.3

NOTE

- Additional clearance must be considered when utilizing insulation.

4.0 DIMENSIONAL DETAILS FOR QUOTE (Continued)



End Details:

OGS-200 Groove Profile

Instrumentation/vent taps are available in the following NPT sizes: 3/4", 1", 1 1/4", 1 1/2" and 2". To include on your No. 826 Steam Outlet Fitting, indicate in the chart below.

Header Details	
Header Tag ID	
Qty.	
Overall Length (L)	
End One Size (E1)	
End Two Size (E2)	
Cap Location	
Header Price	

Outlet Details	A	B	C	D	E	F
Outlet Nominal Pipe Size						
Center to End (C-E1)						
Center to Face (C-F)						
Orientation (0-359°) As Viewed From End E1						
NPT Tap Size						
Distance ¹		A - B	B - C	C - D	D - E	E - F

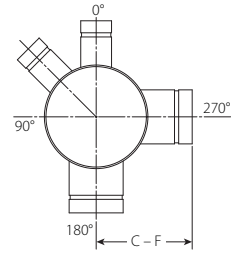
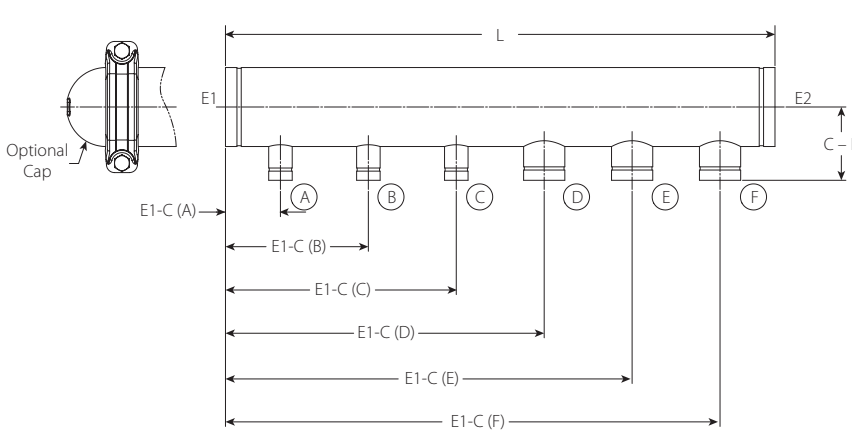
¹ Check that the minimum distance (as per the Style 870 Clearance table on page 3) is greater than or equal to the clearance required for the sizes and distances in the list.

NOTES

- The No. 826 Steam Outlet Fitting is available with an optional Style 870 Rigid Coupling and No. 860 Cap. Refer to US General Price List for coupling and cap pricing. Coupling and cap will be sized as per the connection size as indicated on the No. 826 Steam Outlet Fitting.
- The Header Detail information above allows for Style 870 coupling installations with bolt pads as close as possible. Add extra space as required for any insulation needs over the couplings.

Subtotal Price of Page	
-------------------------------	--

4.0 DIMENSIONAL DETAILS FOR QUOTE (Continued)



End Details:

OGS-200 Groove Profile

Instrumentation/vent taps are available in the following NPT sizes: 3/4", 1", 1 1/4", 1 1/2" and 2". To include on your No. 826 Steam Outlet Fitting, indicate in the chart below.

Header Details	
Header Tag ID	
Qty.	
Overall Length (L)	
End One Size (E1)	
End Two Size (E2)	
Cap Location	
Header Price	

Outlet Details	A	B	C	D	E	F
Outlet Nominal Pipe Size						
Center to End (C-E1)						
Center to Face (C-F)						
Orientation (0-359°) As Viewed From End E1						
NPT Tap Size						
Distance ¹		A - B	B - C	C - D	D - E	E - F

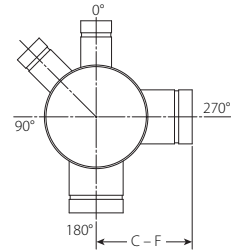
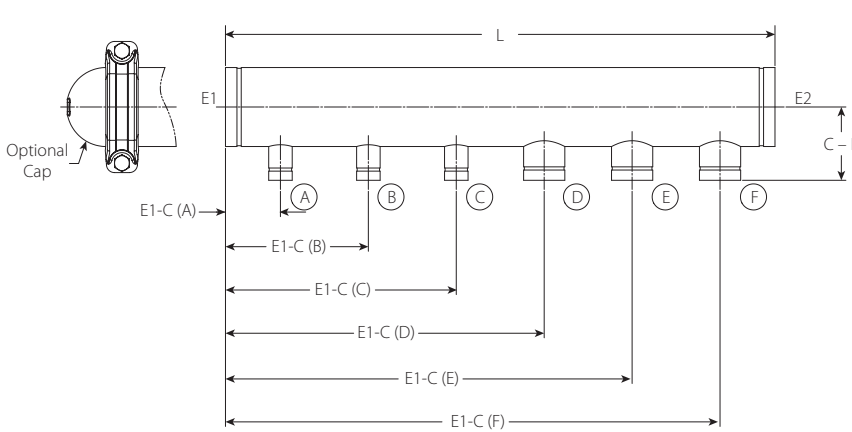
¹ Check that the minimum distance (as per the Style 870 Clearance table on page 3) is greater than or equal to the clearance required for the sizes and distances in the list.

NOTES

- The No. 826 Steam Outlet Fitting is available with an optional Style 870 Rigid Coupling and No. 860 Cap. Refer to US General Price List for coupling and cap pricing. Coupling and cap will be sized as per the connection size as indicated on the No. 826 Steam Outlet Fitting.
- The Header Detail information above allows for Style 870 coupling installations with bolt pads as close as possible. Add extra space as required for any insulation needs over the couplings.

Subtotal Price of Page	
-------------------------------	--

4.0 DIMENSIONAL DETAILS FOR QUOTE (Continued)



End Details:

OGS-200 Groove Profile

Instrumentation/vent taps are available in the following NPT sizes: 3/4", 1", 1 1/4", 1 1/2" and 2". To include on your No. 826 Steam Outlet Fitting, indicate in the chart below.

Header Details	
Header Tag ID	
Qty.	
Overall Length (L)	
End One Size (E1)	
End Two Size (E2)	
Cap Location	
Header Price	

Outlet Details	A	B	C	D	E	F
Outlet Nominal Pipe Size						
Center to End (C-E1)						
Center to Face (C-F)						
Orientation (0-359°) As Viewed From End E1						
NPT Tap Size						
Distance ¹		A - B	B - C	C - D	D - E	E - F

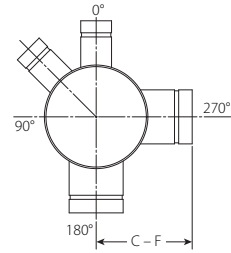
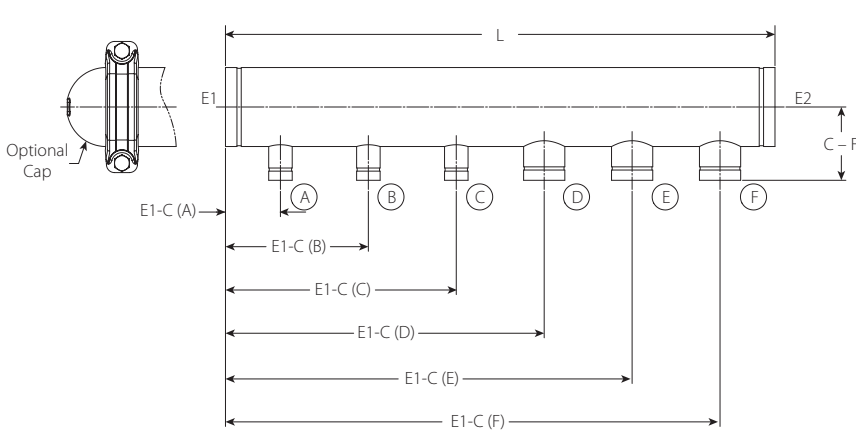
¹ Check that the minimum distance (as per the Style 870 Clearance table on page 3) is greater than or equal to the clearance required for the sizes and distances in the list.

NOTES

- The No. 826 Steam Outlet Fitting is available with an optional Style 870 Rigid Coupling and No. 860 Cap. Refer to US General Price List for coupling and cap pricing. Coupling and cap will be sized as per the connection size as indicated on the No. 826 Steam Outlet Fitting.
- The Header Detail information above allows for Style 870 coupling installations with bolt pads as close as possible. Add extra space as required for any insulation needs over the couplings.

Subtotal Price of Page	
-------------------------------	--

4.0 DIMENSIONAL DETAILS FOR QUOTE (Continued)



End Details:

OGS-200 Groove Profile

Instrumentation/vent taps are available in the following NPT sizes: 3/4", 1", 1 1/4", 1 1/2" and 2". To include on your No. 826 Steam Outlet Fitting, indicate in the chart below.

Header Details	
Header Tag ID	
Qty.	
Overall Length (L)	
End One Size (E1)	
End Two Size (E2)	
Cap Location	
Header Price	

Outlet Details	A	B	C	D	E	F
Outlet Nominal Pipe Size						
Center to End (C-E1)						
Center to Face (C-F)						
Orientation (0-359°) As Viewed From End E1						
NPT Tap Size						
Distance ¹		A – B	B – C	C – D	D – E	E – F

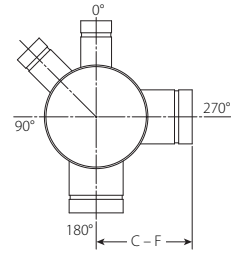
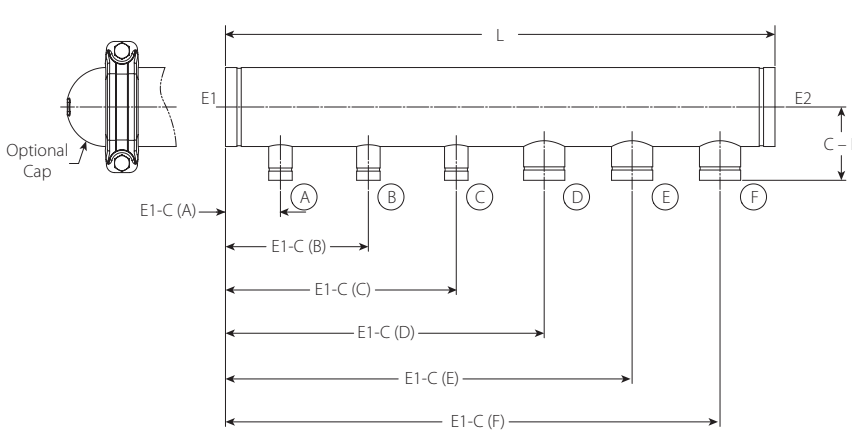
¹ Check that the minimum distance (as per the Style 870 Clearance table on page 3) is greater than or equal to the clearance required for the sizes and distances in the list.

NOTES

- The No. 826 Steam Outlet Fitting is available with an optional Style 870 Rigid Coupling and No. 860 Cap. Refer to US General Price List for coupling and cap pricing. Coupling and cap will be sized as per the connection size as indicated on the No. 826 Steam Outlet Fitting.
- The Header Detail information above allows for Style 870 coupling installations with bolt pads as close as possible. Add extra space as required for any insulation needs over the couplings.

Subtotal Price of Page	
-------------------------------	--

4.0 DIMENSIONAL DETAILS FOR QUOTE (Continued)



End Details:

OGS-200 Groove Profile

Instrumentation/vent taps are available in the following NPT sizes: 3/4", 1", 1 1/4", 1 1/2" and 2". To include on your No. 826 Steam Outlet Fitting, indicate in the chart below.

Header Details	
Header Tag ID	
Qty.	
Overall Length (L)	
End One Size (E1)	
End Two Size (E2)	
Cap Location	
Header Price	

Outlet Details	A	B	C	D	E	F
Outlet Nominal Pipe Size						
Center to End (C-E1)						
Center to Face (C-F)						
Orientation (0-359°) As Viewed From End E1						
NPT Tap Size						
Distance ¹		A - B	B - C	C - D	D - E	E - F

¹ Check that the minimum distance (as per the Style 870 Clearance table on page 3) is greater than or equal to the clearance required for the sizes and distances in the list.

NOTES

- The No. 826 Steam Outlet Fitting is available with an optional Style 870 Rigid Coupling and No. 860 Cap. Refer to US General Price List for coupling and cap pricing. Coupling and cap will be sized as per the connection size as indicated on the No. 826 Steam Outlet Fitting.
- The Header Detail information above allows for Style 870 coupling installations with bolt pads as close as possible. Add extra space as required for any insulation needs over the couplings.

Subtotal Price of Page	
-------------------------------	--

5.0 PERFORMANCE

The selected coupling, size, wall thickness and material will determine the pressure performance of the No. 826 Steam Outlet Fitting.

6.0 NOTIFICATIONS

WARNING



- Read and understand all instructions before attempting to install, remove, adjust, or maintain any Victaulic piping products.
- Always verify that the piping system has been completely depressurized and drained immediately prior to installation, removal, adjustment, or maintenance of any Victaulic products.
- Wear safety glasses, hardhat, and foot protection.

Failure to follow these instructions could result in death or serious personal injury and property damage.

7.0 REFERENCE MATERIALS

[24.01: Victaulic Pipe Preparation Tools](#)

[25.12: Victaulic OGS-200 Roll Groove Specifications](#)

[29.01: Victaulic Terms and Conditions/Warranty](#)

[100.01: Victaulic OGS-200 Grooved End Fittings](#)

[100.02: Victaulic Style 870 High Performance Rigid Coupling](#)

[100.12: Victaulic Series 871 Gate Valve](#)

[100.13: Victaulic Series 159 Flexible Loop for Steam](#)

[I-100: Victaulic Field Installation Handbook](#)

[I-870: Victaulic Installation Instructions Style 870 Rigid Coupling](#)

[I-ENDCAP: Victaulic End Cap Installation Safety Instructions](#)

User Responsibility for Product Selection and Suitability

Each user bears final responsibility for making a determination as to the suitability of Victaulic products for a particular end-use application, in accordance with industry standards and project specifications, and the applicable building codes and related regulations as well as Victaulic performance, maintenance, safety, and warning instructions. Nothing in this or any other document, nor any verbal recommendation, advice, or opinion from any Victaulic employee, shall be deemed to alter, vary, supersede, or waive any provision of Victaulic Company's standard conditions of sale, installation guide, or this disclaimer.

Intellectual Property Rights

No statement contained herein concerning a possible or suggested use of any material, product, service, or design is intended, or should be construed, to grant any license under any patent or other intellectual property right of Victaulic or any of its subsidiaries or affiliates covering such use or design, or as a recommendation for the use of such material, product, service, or design in the infringement of any patent or other intellectual property right. The terms "Patented" or "Patent Pending" refer to design or utility patents or patent applications for articles and/or methods of use in the United States and/or other countries.

Note

This product shall be manufactured by Victaulic or to Victaulic specifications. All products to be installed in accordance with current Victaulic installation/assembly instructions. Victaulic reserves the right to change product specifications, designs and standard equipment without notice and without incurring obligations.

Installation

Reference should always be made to the Victaulic installation handbook or installation instructions of the product you are installing. Handbooks are included with each shipment of Victaulic products, providing complete installation and assembly data, and are available in PDF format on our website at www.victaulic.com.

Warranty

Refer to the Warranty section of the current Price List or contact Victaulic for details.

Trademarks

Victaulic and all other Victaulic marks are the trademarks or registered trademarks of Victaulic Company, and/or its affiliated entities, in the U.S. and/or other countries.