

Victaulic® Stainless Steel Riser Anchor for Tight Spaces

No. A40S



2 – 12"/DN50 – DN300

1.0 PRODUCT DESCRIPTION

Available Sizes

- 2 – 12"/DN50 – DN300

Maximum Working Pressure

- Accommodates pressures ranging from full vacuum (29.9 in Hg) up to 500 psi/3447 kPa/34 bar

Application

- For use on stainless steel NPS riser piping¹
- For use on copper tubing riser piping sized 2 – 6" only, with the use of the Style 644 Installation-Ready Transition Coupling²
- An engineered pipe anchor used to assist in directing pipe movement in piping system risers that are designed and installed exclusively with Victaulic grooved products
- Exclusively for use with pipe and Victaulic products which feature the Victaulic Original Groove System (OGS) groove profile (see section 7.0 for Reference Materials)
- Exclusively for use only in piping systems where a radial pipe guide is present above and below the No. A40S anchor. The guides shall be 4 pipe diameters (4D) (minimum) to 12'-0" (maximum) away from the No. A40S anchor. For piping systems without guides, refer to publication 17.70: Victaulic Stainless Steel Riser Anchor: No A10S.

¹ For carbon steel riser piping applications, refer to [publication 07.74](#): Victaulic Carbon Steel Riser Anchor: No. A40.

² When using on copper tubing riser piping, the Victaulic Style 644 Installation-Ready™ Transition Coupling shall be installed on the end of the No. A10S that transitions from stainless steel pipe to CTS copper tubing. See [publication 22.44](#): Victaulic Installation-Ready™ Transition Coupling for Potable Water – Style 644 for more information.

2.0 CERTIFICATION/LISTINGS



NSF Certified in accordance with ANSI/ NSF 61 for cold +73°F/+23°C and hot +180°F/+82°C potable water service and ANSI/NSF 372.

Product designed and manufactured under Victaulic's Quality Management System, as certified by LPCB in accordance with ISO 9001:2018.

ALWAYS REFER TO ANY NOTIFICATIONS AT THE END OF THIS DOCUMENT REGARDING PRODUCT INSTALLATION, MAINTENANCE OR SUPPORT.

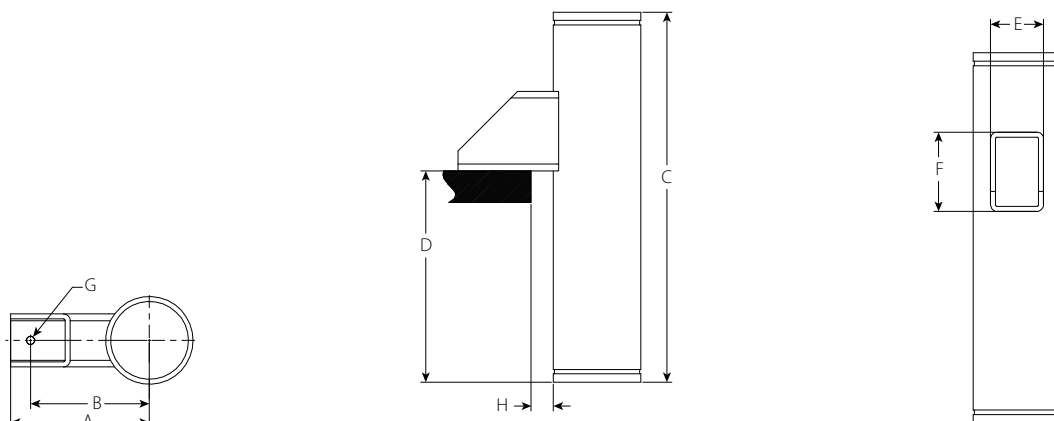


3.0 SPECIFICATIONS – MATERIAL

- Schedule 40S stainless steel pipe conforming to ASTM A312 TP304
- Reinforcement Pads: Stainless steel conforming to ASTM A240 304
- Brackets:
 - 2 – 3"/DN50 – DN80: Carbon steel conforming to ASTM A36
 - 4 – 12"/DN100 – DN300: Carbon steel conforming to ASTM A500 Grade D
- Fastening selection/method by others³

³ Material, type, length, and capacity to be specified by others. Contact Victaulic for further assistance.

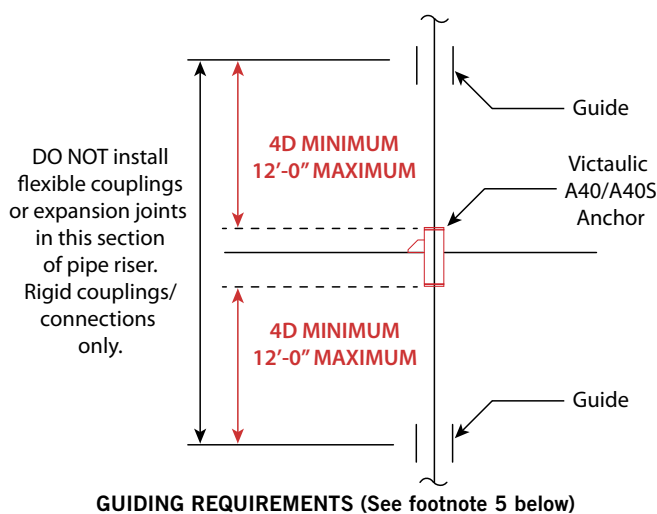
4.0 DIMENSIONS



Size		Dimensions								Weight
Nominal inches DN	Actual Outside Diameter inches mm	A inches mm	B inches mm	C inches mm	D inches mm	E inches mm	F inches mm	G Bolt Hole Diameter inches mm	H Maximum Clearance To Edge of Support inches mm	Approx. (Each) lbs kg
2	2.375	7.00	6.00	24.00	16.00	2.00	3.00	0.625	2.00	10.1
DN50	60.3	178	153	610	406	51	76	15.9	51	4.6
2 ½	2.875	7.00	6.00	24.00	16.00	2.00	3.00	0.625	2.00	14.3
	73.0	178	153	610	406	51	76	15.9	51	6.5
3	3.500	8.00	7.00	24.00	16.00	2.00	3.00	0.625	2.00	18.9
DN80	88.9	203	178	610	406	51	76	15.9	51	8.6
4	4.500	8.00	7.00	24.00	16.00	2.00	4.00	0.625	2.00	25.9
DN100	114.3	203	178	610	406	51	102	15.9	51	11.8
5	5.563	9.00	8.00	24.00	16.00	2.00	4.00	0.625	2.00	33.9
	141.3	229	203	610	406	51	102	15.9	51	15.4
6	6.625	10.50	9.00	28.00	16.00	4.00	6.00	0.875	2.00	59.9
DN150	168.3	267	229	711	406	102	152	22.2	51	27.2
8	8.625	11.50	10.00	28.00	16.00	4.00	6.00	0.875	2.00	81.9
DN200	219.1	292	254	711	406	102	152	22.2	51	37.1
10	10.750	13.50	12.00	30.00	16.00	4.00	6.00	0.875	2.00	121.5
DN250	273.0	343	305	762	406	102	152	22.2	51	55.1
12	12.750	15.50	14.00	30.00	16.00	4.00	6.00	0.875	2.00	146.8
DN300	323.9	394	356	762	406	102	152	22.2	51	66.6

5.0 PERFORMANCE

Size		Maximum Working Pressure psi kPa	Maximum Anchor Load ⁴⁻¹⁰ lbs N
Nominal inches DN	Actual Outside Diameter inches mm		
2 DN50	2.375 60.3	500 3445	1750 7784
2 ½	2.875 73.0	500 3445	2500 11121
3 DN80	3.500 88.9	500 3445	3250 14457
4 DN100	4.500 114.3	500 3445	5000 22241
5	5.563 141.3	500 3445	7500 33362
6 DN150	6.625 168.3	500 3445	10000 44482
8 DN200	8.625 219.1	500 3445	15000 66723
10 DN250	10.750 273.0	500 3445	17500 77844
12 DN300	12.750 323.9	500 3445	20000 88964



- ⁴ Engineer of Record and/or structural engineer are responsible to verify that the attachment method and supporting structure are structurally adequate to withstand the above noted Maximum Anchor Loads. For bolted applications, all reaction forces on the bolts shall be accounted for, including, but not limited to, tensile loads that result from downward loading as a result of bracket reacting with the structure, and tensile loads resulting from upward loading.
- ⁵ Two (2) guides are required for each No. A40S anchor installed as a minimum - one (1) above and one (1) below. The pipe must be guided within a range of minimum 4 pipe diameters (4D) and a maximum of 12'-0" away from the No. A40S anchor.
- ⁶ Anchor is only designed for downward loads.
- ⁷ Anchor is only designed for loading in the axial directions of the pipe, vertically downwards. Any lateral loading must be negated by the owner/engineer by the use of guides or other methods to ensure only vertical, axial loading is transmitted to the anchor.
- ⁸ For applications with maximum anchor loads greater than listed above, please contact Victaulic.
- ⁹ Acceptable methods of attachment include bolting or welding of the brackets to the structure. Chosen method is the responsibility of others.
- ¹⁰ Maximum Anchor Load shall be the lesser of the value shown and the published Maximum End Load for the coupling selected to join the Anchor to the adjoining piping system.

6.0 NOTIFICATIONS

⚠ WARNING



- Read and understand all instructions before attempting to install, remove, adjust, or maintain any Victaulic piping products.
- Depressurize and drain the piping system before attempting to install, remove, adjust, or maintain any Victaulic piping products.
- Wear safety glasses, hardhat, and foot protection.

Failure to follow these instructions could result in death or serious personal injury and property damage.

7.0 REFERENCE MATERIALS

[06.23: Victaulic QuickVic™ Rigid Coupling Style 107N](#)

[06.24: Victaulic QuickVic™ Flexible Coupling Style 177N](#)

[17.24: Victaulic Rigid Coupling Style 89](#)

[22.21: Victaulic Dielectric Transition Fittings - Series 647](#)

[22.44: Victaulic Installation-Ready™ Transition Coupling for Potable Water - Style 644](#)

[I-100: Victaulic Field Installation Handbook](#)

[I-107N: Victaulic Installation Instructions: Style 107N QuickVic™ Installation-Ready™ Rigid Coupling](#)

[I-177N: Victaulic Installation Instructions: Style 177N QuickVic™ Installation-Ready™ Flexible Coupling](#)

[I-A40/A40S: Victaulic Installation Instructions: Nos. A40 and A40S Tight-Space Riser Anchors](#)

User Responsibility for Product Selection and Suitability

Each user bears final responsibility for making a determination as to the suitability of Victaulic products for a particular end-use application, in accordance with industry standards and project specifications, as well as Victaulic performance, maintenance, safety, and warning instructions. Nothing in this or any other document, nor any verbal recommendation, advice, or opinion from any Victaulic employee, shall be deemed to alter, vary, supersede, or waive any provision of Victaulic Company's standard conditions of sale, installation guide, or this disclaimer.

Intellectual Property Rights

No statement contained herein concerning a possible or suggested use of any material, product, service, or design is intended, or should be construed, to grant any license under any patent or other intellectual property right of Victaulic or any of its subsidiaries or affiliates covering such use or design, or as a recommendation for the use of such material, product, service, or design in the infringement of any patent or other intellectual property right. The terms "Patented" or "Patent Pending" refer to design or utility patents or patent applications for articles and/or methods of use in the United States and/or other countries.

Note

This product shall be manufactured by Victaulic or to Victaulic specifications. All products to be installed in accordance with current Victaulic installation/assembly instructions. Victaulic reserves the right to change product specifications, designs and standard equipment without notice and without incurring obligations.

Installation

Reference should always be made to the Victaulic installation handbook or installation instructions of the product you are installing. Handbooks are included with each shipment of Victaulic products, providing complete installation and assembly data, and are available in PDF format on our website at www.victaulic.com.

Warranty

Refer to the Warranty section of the current Price List or contact Victaulic for details.

Trademarks

Victaulic and all other Victaulic marks are the trademarks or registered trademarks of Victaulic Company, and/or its affiliated entities, in the U.S. and/or other countries.