

## AGS Expansion Joints



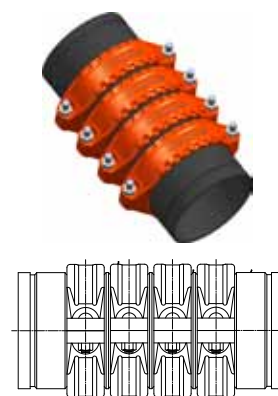
### STYLE W155

Style W155 AGS Expansion Joints are a combination of couplings and short nipples, joined in tandem to provide increased expansion. The nipples are precisely grooved to provide full linear allowance at each joint.

The standard units are prepared with Style W77 AGS couplings and are assembled with nipples in the full open position for full expansion. For contraction services, units are fully compressed. Where expansion and contraction allowances are needed, the spacing will be set proportionally to the installation temperature and the temperature extremes (according to customer specifications). The ties holding the couplings in position must be removed after installation.

Victaulic expansion joints may be used as flexible connectors; however, they will not simultaneously provide full expansion and full deflection. Expansion joints installed horizontally require independent support to prevent deflection which will reduce the available expansion.

Request the 09.06 for design installation information.



EXAGGERATED FOR CLARITY

### MATERIAL SPECIFICATIONS

**Housing:** Ductile iron conforming to ASTM A-536, grade 65-45-12. Ductile iron conforming to ASTM A-395, grade 65-45-15, is available upon special request.

**Housing Coating:** Orange enamel

- **Optional:** Hot dip galvanized and others. Contact Victaulic for details.

**Nipples:**

14 – 24"/350 – 600mm: 0.50 wall carbon steel conforming to ASTM A-53, Type S, Grade B, or ASTM A-106 Grade B

**Gasket:** (specify choice\*)

- **Grade "E" Flushseal® EPDM**  
EPDM (Green color code). Temperature range –30°F to +230°F/–34°C to +110°C.  
Recommended for hot water service within the specified temperature range plus a variety of dilute acids, oil-free air and many chemical services. UL classified in accordance with ANSI/NSF 61 for cold +86°F/+30°C and hot +180°F/+82°C potable water service. NOT RECOMMENDED FOR PETROLEUM SERVICES.
- **Grade "T" Flushseal nitrile**  
Nitrile (Orange color code). Temperature range –20°F to +180°F/–29°C to +82°C.  
Recommended for petroleum products, air with oil vapors, vegetable and mineral oils within the specified temperature range. Not recommended for hot water services over +150°F/+66°C or for hot dry air over +140°F/+60°C.

\* Services listed are General Service Recommendations only. It should be noted that there are services for which these gaskets are not recommended. Reference should always be made to the latest Victaulic Gasket Selection Guide for specific gasket service recommendations and for a listing of services which are not recommended.

**Bolts/Nuts:** Heat-treated plated carbon steel, trackhead meeting the physical and chemical requirements of ASTM A-449 and physical requirements of ASTM A-183.

### JOB/OWNER

System No. \_\_\_\_\_

Location \_\_\_\_\_

### CONTRACTOR

Submitted By \_\_\_\_\_

Date \_\_\_\_\_

### ENGINEER

Spec Sect \_\_\_\_\_ Para \_\_\_\_\_

Approved \_\_\_\_\_

Date \_\_\_\_\_

[www.victaulic.com](http://www.victaulic.com)

VICTAULIC IS A REGISTERED TRADEMARK OF VICTAULIC COMPANY. © 2010 VICTAULIC COMPANY. ALL RIGHTS RESERVED.

REV\_A

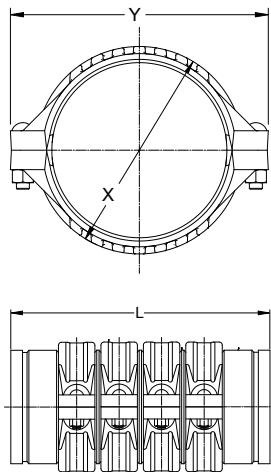


20.12\_1

## AGS Expansion Joints

### STYLE W155

#### DIMENSIONS



TYPICAL 14 – 24"/350 – 600MM SIZES

Standard Units †								
Size		Style	Dimensions – Inches/mm					Approx. Wgt. Each
Nominal Size Inches mm	Actual Outside Diameter Inches mm	Coupling Style	L - Length (ref.) §		X Height	Y Width	Total Movement Capability	Lbs. kg
			Compressed	Expanded				
14 350	14.000 355.6	W77	30.00 762	31.75 807	16.000 406	20.59 523	1.75 45	373.0 168.9
16 400	16.000 406.4	W77	30.00 762	31.75 807	18.18 462	23.51 597	1.75 45	440.0 199.3
18 450	18.000 457.0	W77	30.00 762	31.75 807	20.36 517	25.46 647	1.75 45	500.0 226.5
20 500	20.000 508.0	W77	30.00 762	31.75 807	22.56 573	27.13 689	1.75 45	600.0 271.8
24 600	24.000 610.0	W77	30.00 762	31.75 807	26.88 683	32.31 821	1.75 45	835.0 378.3

† Contact Victaulic for performance requirements not listed above.

§ Dimensions may vary slightly due to tolerances.

For Performance Data refer to the 20.03 for Style W77.

#### SPECIAL LENGTH EXPANSION ABSORBERS

Nominal Sizes	Nominal Inches mm
	14 – 24 350 – 600
Total movement increased or decreased in increments of	0.44 11.2
Length per increment compressed	4.75 120.7
Length per increment expanded	5.19 131.8

NOTE: Available with greater or less movement by adding or eliminating coupling and nipple units.

## AGS Expansion Joints

### STYLE W155

---

#### INSTALLATION

For installation instructions, refer to publication 09.06. Installation instructions are available in PDF format on our website at [www.victaulic.com](http://www.victaulic.com).

---

#### WARRANTY

Refer to the Warranty section of the current Price List or contact Victaulic for details.

---

#### NOTE

This product shall be manufactured by Victaulic or to Victaulic specifications. All products to be installed in accordance with current Victaulic installation/assembly instructions. Victaulic reserves the right to change product specifications, designs and standard equipment without notice and without incurring obligations.

---

For complete contact information, visit [www.victaulic.com](http://www.victaulic.com)

20.12 4009 REV A UPDATED 12/2010

VICTAULIC IS A REGISTERED TRADEMARK OF VICTAULIC COMPANY. © 2010 VICTAULIC COMPANY. ALL RIGHTS RESERVED.

20.12

