

Victaulic® Dynamic Movement Joint

Style W257N



2" Movement Joint



4" Movement Joint



1.0 PRODUCT DESCRIPTION

Available Pipe Sizes

- The W257N Dynamic Movement Joint is available in sizes 14 – 60"/DN350 – DN1500 (all sizes below reference pipe outside diameter) for exposed or buried applications, with either 2"/51 mm or 4"/102 mm of movement capability.
- For buried applications, pipe sizes greater than 24"/DN600: Style W257N utilizes *Vic-Ring* adapters.
- For exposed applications, pipe sizes greater than 50"/DN1250: Style W257N utilizes *Vic-Ring* adapters.
- For pipe sizes greater than 60"/DN1500, contact Victaulic.

Maximum Working Pressure

- 14 – 60"/DN350 – DN1500: 150 psi/1034 kPa.
- For pressures greater than 150 psi/1034 kPa, contact Victaulic.

Buried Configuration

- Maximum burial depth is 15 feet/4.6 m from the springline (centerline of the pipe).
- For buried applications deeper than 15 feet/4.6 m from the springline (centerline of the pipe). Please contact Victaulic for additional information.
- For buried applications with soil densities greater than 120 LBS/CU-FT and/or minimum average soil modulus less than 800 psi (per AWWA M11), contact Victaulic for additional information.

Movement

- Total radial movement of 2"/51 mm or 4"/102 mm (including lateral and vertical movements).
- For applications requiring axial movement, contact Victaulic.
- For movement greater than 4"/102 mm, contact Victaulic.
- For smaller install spaces, contact Victaulic
- For any movement or installation parameters outside of the standard offering, contact Victaulic..

Function

- Accommodates in-service movement associated with piping systems.

Application

- Meets the design requirements of AWWA M11.
- Coated and lined in accordance with the requirements of AWWA C210 Liquid Epoxy Coating Systems for the Interior and Exterior of Steel Water Pipelines.
- For AGS coupling field connections to the Style W257N, refer to [I-W100](#) for installation and torque requirements.

NOTE

- Protection shall be implemented to prevent aggregate from entering the grooves adjacent to joint movement.

2.0 CERTIFICATION/LISTINGS

Product designed, manufactured and tested under the Victaulic Quality Management System, as certified by LPCB in accordance with ISO 9001:2015.

The Grade "E" EPDM seal is certified for use in drinking water systems by UL LLC in accordance with ANSI/NSF 61 Drinking Water System Components – Health Effects and ANSI/NSF 372 Drinking Water System Components – Lead Content.

ALWAYS REFER TO ANY NOTIFICATIONS AT THE END OF THIS DOCUMENT REGARDING PRODUCT INSTALLATION, MAINTENANCE OR SUPPORT.

3.0 SPECIFICATIONS – MATERIAL

Housing:

- Ductile iron conforming to ASTM A536, Grade 65 - 45 - 12.

Vic-Ring Material:

- Carbon Steel to ASTM A105 or equivalent.

Spools:

- Meeting the physical and mechanical requirements of the following pipe standards: ASTM A53, API 5L, AWWA C200, EN/BS10216 - 1, EN/BS10217 - 1 or other internationally recognized standards.

Reinforcement Collars: (As Required Per Section 4.1 Figure 5)

- Meeting the physical and mechanical requirements of ASTM A36.

External Product Coating (Specify Choice):

Standard: Liquid Epoxy conforming with AWWA C210 and NSF Certified in accordance with NSF/ANSI/CAN 61 (North America).

Optional: Others, contact Victaulic with your requirements.

Internal Product Lining (Specify Choice):

Standard: Liquid Epoxy conforming with AWWA C210 and NSF Certified in accordance with NSF/ANSI/CAN 61 (North America).

Optional: Cement/Mortar Type 2 Lining conforming to AWWA C205.

Optional: Others, contact Victaulic with your requirements.

Seal: (Specify Choice)

Grade “E” EPDM

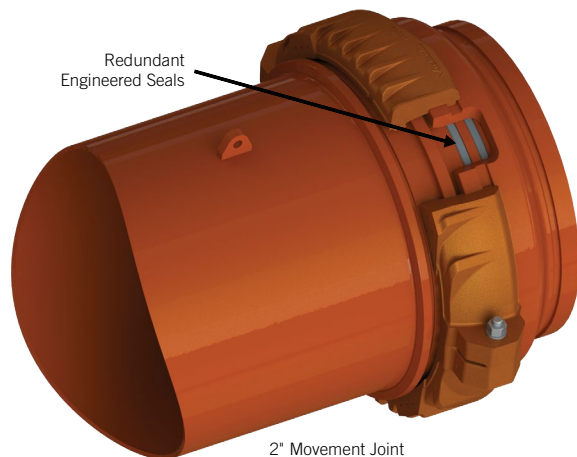
EPDM. Temperature range 32°F to +150°F/0°C to +66°C. May be specified for hot water service within the specified temperature range plus a variety of dilute acids, oil – free air and many chemical services. UL Classified in accordance with ANSI/NSF 61 for cold +73°F/+23°C and hot +150°F/+66°C potable water service and ANSI/NSF 372. NOT COMPATIBLE FOR USE WITH PETROLEUM SERVICES OR STEAM SERVICES.

Grade “T” Nitrile

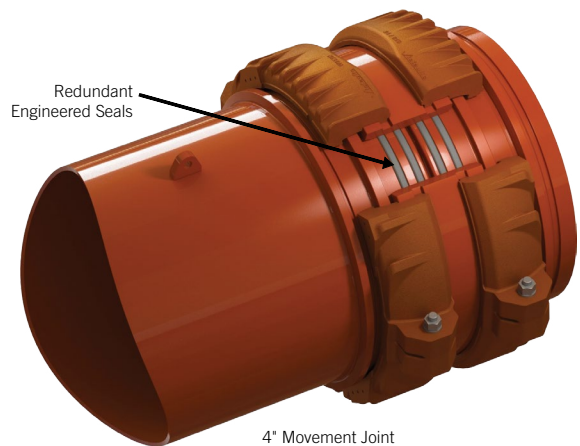
Nitrile. Temperature range 32°F to +150°F/0°C to +66°C. May be specified for oil related services, including air with oil vapor, this seal may be specified for temperatures rated up to +150°F/+66°C. For water related services, this seal may be specified for temperatures rated up to +150°F/+66°C. For oil free, dry air services, this seal may be specified for temperatures rated up to +140°F/+60°C. NOT COMPATIBLE FOR USE WITH HOT WATER SERVICES OR STEAM SERVICES.

NOTE

- Services listed are General Service Guidelines only. It should be noted that there are services for which these seals are not compatible. References should always be made to sections 9.0 – 9.2 of the latest [Victaulic Seal Selection Guide](#) for specific seal service guidelines and for a listing of services which are not compatible.



2" Movement Joint



4" Movement Joint

3.0 SPECIFICATIONS – MATERIAL (CONTINUED)

Bolts/Nuts:

For 14 – 60"/DN350 – DN1500:

- Bolts: Heavy hex per ASTM F593 Group 2 (316 Stainless Steel), condition CW (F593H).
- Nuts: Heavy hex nuts per ASTM F594 Group 2 (316 Stainless Steel), condition CW (F594H).
- Washers: Flat (316 stainless steel).

End Connections:

Standard: Victaulic coupling (Style W77/W77B final connection couplings included, refer to [publication 20.03](#)).

Optional: Flanged.

Optional: Plain End.

NOTE

- Victaulic will provide couplings and grooved end connections (as required). Please see [publication 16.12](#) for additional information.

Installation Configuration: (Specify Choice)

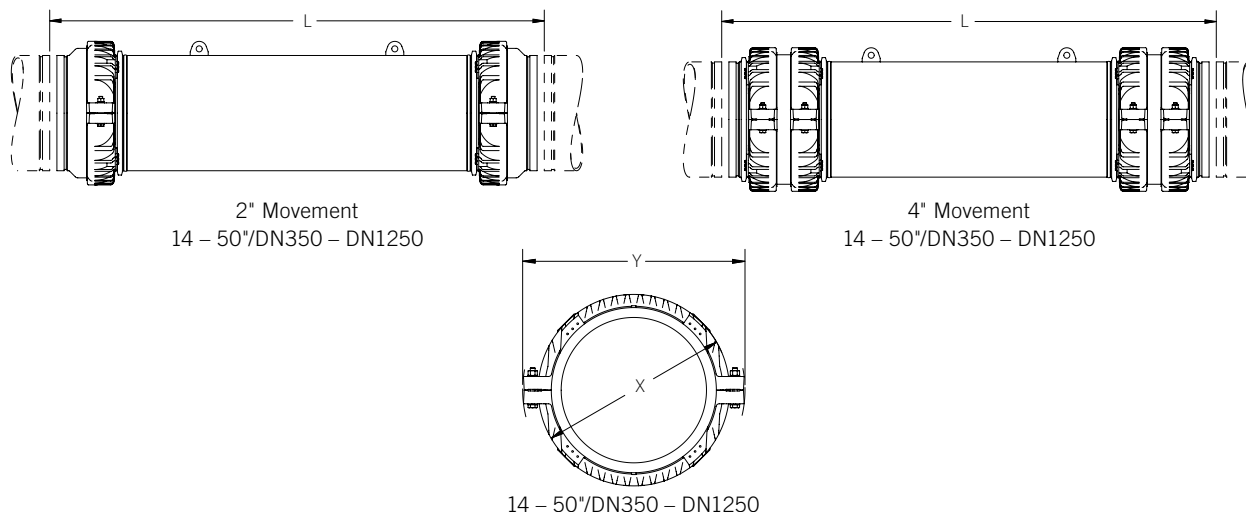
Standard: Neutral.

Optional: Fully Expanded.

Shipping Locks:

- Style W257N Dynamic Movement Joints are supplied as a rigid unit in the standard neutral position (or optional fully extended position per customer request). Shipping locks must be removed after installation and proper support of the unit, and prior to testing and/or placing in service.
- Shipping locks are temporary, and intended to be used for shipping and installation purposes only.

4.0 DIMENSIONS



Pipe Sizes		Required AGS Coupling Size		Installed Length (Neutral) ^{1,3}	Additional Install Length (Fully Extended) ^{2,3}		Dimensions		Exposed Approx. Weights		Buried Approx. Weights	
Nominal	Actual	Exposed ⁵	Buried ⁶	L	2"/51 mm Movement	4"/102 mm Movement	X	Y	2"/51 mm Movement	4"/102 mm Movement	2"/51 mm Movement	4"/102 mm Movement
inches	inches	inches	inches	feet	inches	inches	inches	inches	lb	lb	lb	lb
mm	DN	mm	DN	m	mm	mm	mm	mm	kg	kg	kg	kg
14	14.00	14	14	6' 0"	15/16	1 7/8	19.13	25.75	900	1,275	900	1,275
DN350	355.6	355.6	355.6	1.83	23.8	47.6	486	654	408	579	408	579
16	16.00	16	16	6' 0"	15/16	1 7/8	21.38	28.00	1,100	1,525	1,100	1,525
DN400	406.4	406.4	406.4	1.83	23.8	47.6	542	712	499	692	499	692
18	18.00	18	18	6' 6"	15/16	1 7/8	23.75	30.50	1,350	1,900	1,350	1,900
DN450	457.2	457.2	457.2	1.98	23.8	47.6	604	774	613	862	613	862
20	20.00	20	20	7' 0"	15/16	1 7/8	26.25	33.00	1,575	2,300	1,575	2,300
DN500	508.0	508.0	508.0	2.13	23.8	47.6	666	838	715	1,044	715	1,044
22	22.00	22	22	7' 6"	15/16	1 7/8	28.50	35.25	1,825	2,625	1,825	2,625
DN550	558.8	558.8	558.8	2.29	23.8	47.6	724	896	828	1,191	828	1,191
24	24.00	24	24	8' 0"	15/16	1 7/8	30.75	37.00	2,350	2,925	2,350	2,925
DN600	609.6	609.6	609.6	2.44	23.8	47.6	782	940	1,066	1,327	1,066	1,327
26	26.00	26	28	8' 3"	1	2	33.75	40.25	2,525	3,550	2,650	3,675
DN650	660.4	660.4	711.2	2.51	25.4	50.8	858	1022	1,146	1,611	1,202	1,667
28	28.00	28	30	8' 3"	1	2	36.25	43.00	2,975	4,175	3,150	4,300
DN700	711.2	711.2	762.0	2.51	25.4	50.8	920	1092	1,350	1,894	1,429	1,951
30	30.00	30	32	8' 3"	1 1/8	2 1/4	38.75	45.75	3,400	4,800	3,550	4,950
DN750	762.0	762.0	812.8	2.51	28.6	57.2	984	1162	1,542	2,177	1,611	2,246
32	32.00	32	34	8' 9"	1 1/8	2 1/4	41.25	48.00	3,800	5,450	4,000	5,600
DN800	812.8	812.8	863.6	2.67	28.6	57.2	1048	1220	1,724	2,472	1,815	2,540

¹ Installed Length is the required opening distance between the mating pipe ends for drop in installation. For smaller install spaces, contact Victaulic.

² When specifying a unit to be delivered in the fully extended position, add the value listed in the 2"/51mm or 4"/102mm Movement column to that size's stated installed length value.

³ Due to manufacturing tolerances, the nominal overall actual length of assemblies can vary depending upon configuration. For alternate tolerances, contact Victaulic.

2"/51 mm Movement Configuration: Neutral = (+/-) 7/16", Extended = (+/-) 3/16" (Additional)

4"/102 mm Movement Configurations: Neutral = (+/-) 11/16", Extended = (+/-) 3/8" (Additional)

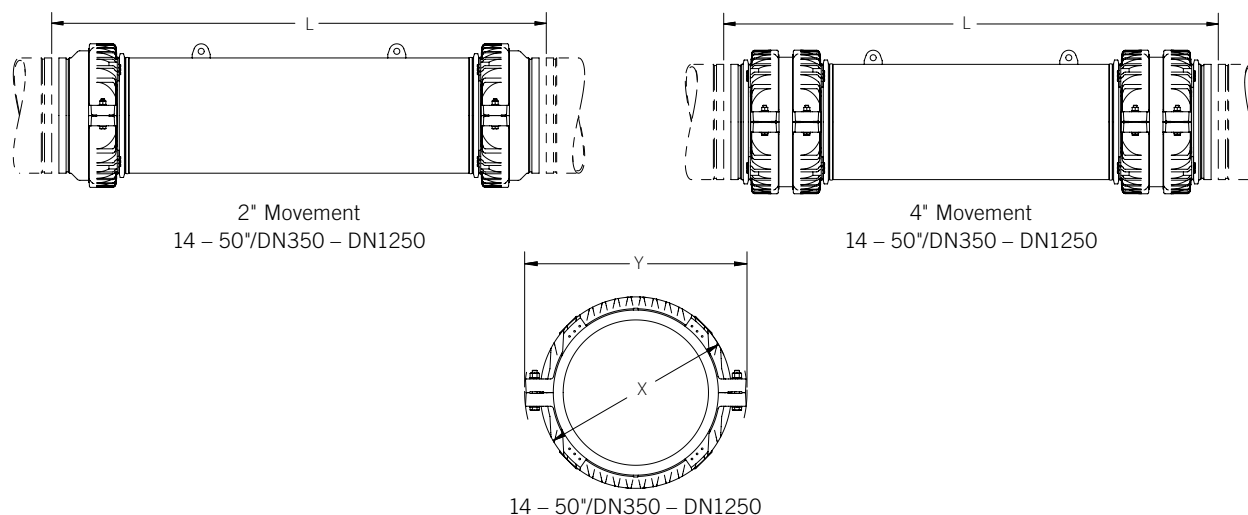
⁴ For outside pipe diameters not shown, contact Victaulic.

⁵ For exposed applications, pipe sizes greater than 50"/DN1250: Style W257N utilizes Vic-Ring adapters. Contact Victaulic for additional information.

⁶ For buried applications, pipe sizes greater than 24"/DN600: Style W257N utilizes Vic-Ring adapters. Contact Victaulic for additional information.

⁷ For movement greater than 4"/102 mm, contact Victaulic.

4.0 DIMENSIONS (CONTINUED)



Pipe Sizes		Required AGS Coupling Size		Installed Length (Neutral) ^{1,3}	Additional Install Length (Fully Extended) ^{2,3}		Dimensions		Exposed Approx. Weights		Buried Approx. Weights	
Nominal inches mm	Actual inches DN	Exposed ⁵ inches mm	Buried ⁶ inches DN	L feet m	2"/51 mm Movement inches mm	4"/102 mm Movement inches mm	X inches mm	Y inches mm	2"/51 mm Movement lb kg	4"/102 mm Movement lb kg	2"/51 mm Movement lb kg	4"/102 mm Movement lb kg
34 DN850	34.00 863.6	34 863.6	36 914.4	9' 3" 2.82	1 ½ 28.6	2 ¼ 57.2	43.75 1112	51.00 1296	4,575 2,075	6,500 2,949	4,775 2,166	6,675 3,028
36 DN900	36.00 914.4	36 914.4	38 965.2	9' 9" 2.97	1 ½ 28.6	2 ¼ 57.2	46.00 1168	53.00 1346	5,025 2,280	7,350 3,334	5,325 2,416	7,525 3,414
38 DN950	38.00 965.2	38 965.2	40 1016.0	10' 3" 3.12	1 ½ 28.6	2 ¼ 57.2	48.25 1226	56.50 1436	5,550 2,518	8,050 3,652	5,750 2,608	8,225 3,731
40 DN1000	40.00 1016.0	40 1016.0	42 1066.8	10' 9" 3.28	1 ½ 28.6	2 ¼ 57.2	50.50 1282	59.00 1498	6,050 2,744	8,575 3,890	6,275 2,847	8,775 3,981
42 DN1050	42.00 1066.8	42 1066.8	44 1117.6	10' 9" 3.28	1 ½ 28.6	2 ¼ 57.2	53.00 1346	61.50 1562	6,675 3,028	9,625 4,366	6,900 3,130	9,850 4,468
44 DN1100	44.00 1117.6	44 1117.6	46 1168.4	11' 6" 3.51	1 ½ 28.6	2 ¼ 57.2	55.50 1410	64.00 1626	7,325 3,323	10,400 4,718	7,575 3,436	10,625 4,820
46 DN1150	46.00 1168.4	46 1168.4	48 1219.2	11' 6" 3.51	1 ½ 28.6	2 ¼ 57.2	58.00 1474	66.00 1676	7,975 3,618	11,400 5,171	8,200 3,720	11,625 5,273
48 DN1200	48.00 1219.2	48 1219.2	50 1270.0	12' 6" 3.81	1 ½ 28.6	2 ¼ 57.2	60.00 1524	69.00 1752	8,800 3,992	12,500 5,670	9,275 4,207	12,750 5,784
50 DN1250	50.00 1270.0	50 1270.0	52 1320.8	12' 9" 3.89	1 ½ 28.6	2 ¼ 57.2	62.50 1588	71.50 1816	9,950 4,513	14,225 6,453	10,275 4,661	14,500 6,577

¹ Installed Length is the required opening distance between the mating pipe ends for drop in installation. For smaller install spaces, contact Victaulic.

² When specifying a unit to be delivered in the fully extended position, add the value listed in the 2"/51mm or 4"/102mm Movement column to that size's stated installed length value.

³ Due to manufacturing tolerances, the nominal overall actual length of assemblies can vary depending upon configuration. For alternate tolerances, contact Victaulic.

2"/51 mm Movement Configuration: Neutral = (+/-) 7/16", Extended = (+/-) 3/16" (Additional)

4"/102 mm Movement Configurations: Neutral = (+/-) 11/16", Extended = (+/-) 3/8" (Additional)

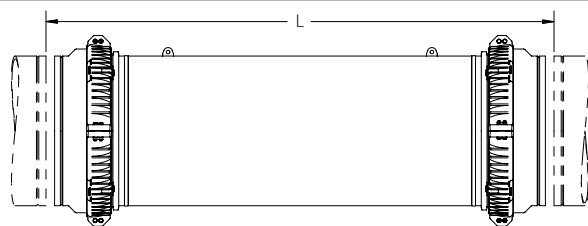
⁴ For outside pipe diameters not shown, contact Victaulic.

⁵ For exposed applications, pipe sizes greater than 50"/DN1250: Style W257N utilizes Vic-Ring adapters. Contact Victaulic for additional information.

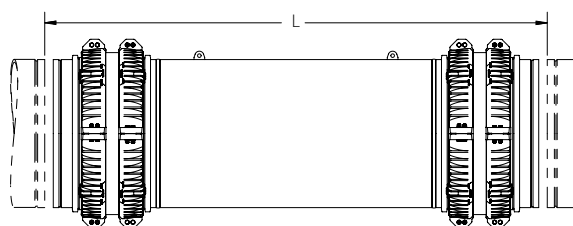
⁶ For buried applications, pipe sizes greater than 24"/DN600: Style W257N utilizes Vic-Ring adapters. Contact Victaulic for additional information.

⁷ For movement greater than 4"/102 mm, contact Victaulic.

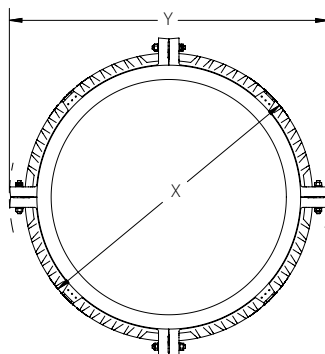
4.0 DIMENSIONS (CONTINUED)



2" Movement
52 – 60"/DN1300 – DN1500



4" Movement
52 – 60"/DN1300 – DN1500



52 – 60"/DN1300 – DN1500

Pipe Sizes		Required AGS Coupling Size		Installed Length (Neutral) ^{1,3}	Additional Install Length (Fully Extended) ^{2,3}		Dimensions		Exposed Approx. Weights		Buried Approx. Weights	
Nominal inches mm	Actual inches DN	Exposed ⁵ inches mm	Buried ⁶ inches DN	L feet m	2"/51 mm Movement inches mm	4"/102 mm Movement inches mm	X inches mm	Y inches mm	2"/51 mm Movement lb kg	4"/102 mm Movement lb kg	2"/51 mm Movement lb kg	4"/102 mm Movement lb kg
52	52.00	54	54	13' 9"	1 1/8	2 1/4	65.00	74.00	12,625	17,650	12,625	17,650
DN1300	1320.8	1371.6	1371.6	4.19	28.6	57.2	1652	1880	5,727	8,006	5,727	8,006
54	54.00	56	56	13' 9"	1 1/8	2 1/4	67.50	77.00	13,400	19,100	13,400	19,100
DN1350	1371.6	1422.4	1422.4	4.19	28.6	57.2	1714	1956	6,078	8,664	6,078	8,664
56	56.00	58	58	14' 0"	1 1/8	2 1/4	70.00	79.50	14,550	20,850	14,550	20,850
DN1400	1422.4	1473.2	1473.2	4.27	28.6	57.2	1778	2020	6,600	9,458	6,600	9,458
58	58.00	60	60	15' 0"	1 1/8	2 1/4	72.00	81.50	15,700	22,100	15,700	22,100
DN1450	1473.2	1524.0	1524.0	4.57	28.6	57.2	1828	2070	7,122	10,025	7,122	10,025
60	60.00	62	62	15' 0"	1 1/8	2 1/4	74.50	85.50	16,975	23,975	16,975	23,975
DN1500	1524.0	1574.8	1574.8	4.57	28.6	57.2	1892	2172	7,700	10,875	7,700	10,875

¹ Installed Length is the required opening distance between the mating pipe ends for drop in installation. For smaller install spaces, contact Victaulic.

² When specifying a unit to be delivered in the fully extended position, add the value listed in the 2"/51mm or 4"/102mm Movement column to that size's stated installed length value.

³ Due to manufacturing tolerances, the nominal overall actual length of assemblies can vary depending upon configuration. For alternate tolerances, contact Victaulic.

2"/51 mm Movement Configuration: Neutral = (+/-) 7/16", Extended = (+/-) 3/16" (Additional)

4"/102 mm Movement Configurations: Neutral = (+/-) 11/16", Extended = (+/-) 3/8" (Additional)

⁴ For outside pipe diameters not shown, contact Victaulic.

⁵ For exposed applications, pipe sizes greater than 50"/DN1250: Style W257N utilizes Vic-Ring adapters. Contact Victaulic for additional information.

⁶ For buried applications, pipe sizes greater than 24"/DN600: Style W257N utilizes Vic-Ring adapters. Contact Victaulic for additional information.

⁷ For movement greater than 4"/102 mm, contact Victaulic.

4.1 DIMENSIONS

Grooved End Connections

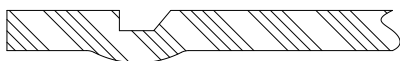


Figure 1
Roll Grooved Pipe For:
Standard Exposed: 14 – 50"/DN350 – DN1250
Optional Exposed: N/A
Standard Buried: 14 – 24"/DN350-DN600
Optional Buried: N/A



Figure 2
Type "D" Vic-Ring Adapter For:
Standard Exposed: 52 – 60"/DN1300 – DN1500
Optional Exposed: All sizes
Standard Buried: 26 – 38"/DN650-DN950
Optional Buried: 14 – 24"/DN350-DN600



Figure 3
Type "B" Vic-Ring Adapter For:
Standard Exposed: N/A
Optional Exposed: All sizes
Standard Buried: N/A
Optional Buried: 14 – 38"/DN350 – DN950

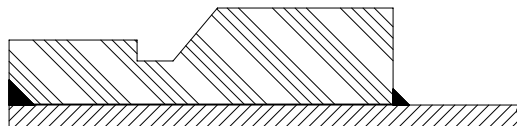


Figure 4
Type "D" Vic-Ring Adapter For:
Standard Exposed: N/A
Optional Exposed: All sizes
Standard Buried: 40 – 50"/DN1000 – DN1250
Optional Buried: N/A

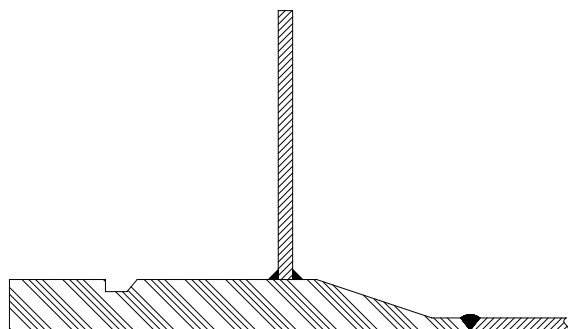


Figure 5
Type "B" Vic-Ring Adapter With Reinforcement Collar For:
Standard Exposed: N/A
Optional Exposed: All sizes
Standard Buried: 52 – 60"/DN1300 – DN1500
Optional Buried: 14 – 50"/DN350 – DN1250

NOTE

- Please see [publication 16.12](#) for additional information.

5.0 PERFORMANCE

Pipe Sizes		Required AGS Coupling Sizes		Performance	Exposed		Buried	
Nominal inches DN	Actual inches mm	Exposed ¹⁰ inches mm	Buried ¹¹ inches mm	Activation Moment ⁸ 150 psi/1034 kPa ft-lbs N-m	Maximum Allowable Shear ⁹		Maximum Allowable Shear ⁹	
					Load at 0 psi/0 kPa lbf N	Load at 150 psi/1034 kPa lbf N	Load at 0 psi/0 kPa lbf N	Load at 150 psi/1034 kPa lbf N
14 DN350	14.00 355.6	14 355.6	14 355.6	16,500 22,400	33,500 149,016	24,000 106,758	33,500 149,016	24,000 106,758
16 DN400	16.00 406.4	16 406.4	16 406.4	24,000 32,500	33,500 149,016	23,000 102,310	33,500 149,016	23,000 102,310
18 DN450	18.00 457.2	18 457.2	18 457.2	33,500 45,400	33,500 149,016	22,000 97,860	33,500 149,016	22,000 97,860
20 DN500	20.00 508.0	20 508.0	20 508.0	45,000 61,000	44,500 197,946	32,000 142,344	44,500 197,946	32,000 142,344
22 DN550	22.00 558.8	22 558.8	22 558.8	59,000 80,000	44,500 197,946	30,000 133,446	44,500 197,946	30,000 133,446
24 DN600	24.00 609.6	24 609.6	24 609.6	76,000 103,000	44,500 197,946	29,000 128,998	44,500 197,946	29,000 128,998
26 DN650	26.00 660.4	26 660.4	28 711.2	99,000 134,200	89,000 395,892	71,000 315,824	89,000 395,892	69,000 306,928
28 DN700	28.00 711.2	28 711.2	30 762.0	125,000 169,500	89,000 395,892	69,000 306,928	105,000 467,064	85,000 378,098
30 DN750	30.00 762.0	30 762.0	32 812.8	155,000 210,200	105,000 467,064	85,000 378,098	105,000 467,064	84,000 373,650
32 DN800	32.00 812.8	32 812.8	34 863.6	185,000 250,800	105,000 467,064	84,000 373,650	105,000 467,064	82,000 364,754
34 DN850	34.00 863.6	34 863.6	36 914.4	230,000 311,800	105,000 467,064	82,000 364,754	105,000 467,064	82,000 364,754
36 DN900	36.00 914.4	36 914.4	38 965.2	270,000 366,100	105,000 467,064	82,000 364,754	105,000 467,064	80,000 355,858
38 DN950	38.00 965.2	38 965.2	40 1016.0	315,000 427,100	105,000 467,064	80,000 355,858	105,000 467,064	79,000 351,410
40 DN1000	40.00 1016.0	40 1016.0	42 1066.8	365,000 494,900	105,000 467,064	79,000 351,410	105,000 467,064	78,000 346,962
42 DN1050	42.00 1066.8	42 1066.8	44 1117.6	420,000 569,400	105,000 467,064	78,000 346,962	105,000 467,064	77,000 342,514
44 DN1100	44.00 1117.6	44 1117.6	46 1168.4	480,000 650,800	105,000 467,064	77,000 342,514	105,000 467,064	75,000 333,616
46 DN1150	46.00 1168.4	46 1168.4	48 1219.2	550,000 745,700	105,000 467,064	75,000 333,616	105,000 467,064	74,000 329,168
48 DN1200	48.00 1219.2	48 1219.2	50 1270.0	620,000 840,600	105,000 467,064	74,000 329,168	105,000 467,064	73,000 324,720
50 DN1250	50.00 1270.0	50 1270.0	52 1320.8	700,000 949,100	105,000 467,064	73,000 324,720	215,000 956,368	155,000 689,474
52 DN1300	52.00 1320.8	54 1371.6	54 1371.6	780,000 1,057,500	215,000 956,368	155,000 689,474	215,000 956,368	155,000 689,474
54 DN1350	54.00 1371.6	56 1422.4	56 1422.4	870,000 1,179,600	215,000 956,368	155,000 689,474	215,000 956,368	155,000 689,474
56 DN1400	56.00 1422.4	58 1473.2	58 1473.2	970,000 1,315,100	215,000 956,368	150,000 667,234	215,000 956,368	150,000 667,234
58 DN1450	58.00 1473.2	60 1524.0	60 1524.0	1,070,000 1,450,700	215,000 956,368	145,000 644,992	215,000 956,368	145,000 644,992
60 DN1500	60.00 1524.0	62 1574.8	62 1574.8	1,180,000 1,599,900	215,000 956,368	145,000 644,992	215,000 956,368	145,000 644,992

⁸ Victaulic Style W257N Dynamic Movement Joints require an activation moment resulting in reaction forces and moments in the system. This moment is linearly proportional to the system MAWP (Maximum Allowable Working Pressure) and can be determined for system design pressure through this linear relationship. The design activation moment shall be used for piping system and structural design purposes.

⁹ Victaulic Style W257N Dynamic Movement Joints will be subject to shear loads. The allowable shear load at 0 psi/0 kPa and the allowable shear load at MAWP (150 psi/1034 kPa) are provided in this table. The minimum and maximum shear loads are linearly proportional and can be determined for system design pressure through this linear relationship. The system shear load shall be used for piping system design and structural design purposes.

¹⁰ For exposed applications, pipe sizes greater than 50"/DN1250: Style W257N utilizes Vic-Ring adapters. Contact Victaulic for additional information.

¹¹ For buried applications, pipe sizes greater than 24"/DN600: Style W257N utilizes Vic-Ring adapters. Contact Victaulic for additional information.

6.0 NOTIFICATIONS

WARNING

- Read and understand all instructions before attempting to install any Victaulic products.
- Always verify that the piping system has been completely depressurized and drained immediately prior to installation, removal, adjustment, or maintenance of any Victaulic products.
- Confirm that any equipment, branch lines, or sections of piping that may have been isolated for/during testing or due to valve closures/positioning are identified, depressurized, and drained immediately prior to installation, removal, adjustment, or maintenance of any Victaulic products.
- Wear safety glasses, hardhat, and foot protection.
- Adjoining pipe shall have ends that are prepared to Victaulic Advanced Groove System (AGS) specifications.
- Victaulic AGS products SHALL NOT be installed on pipe ends that are prepared to Original Groove System (OGS) specifications.

Failure to follow these instructions could joint failure, resulting in death or serious personal injury and property damage.

7.0 REFERENCE MATERIALS

[02.06: Potable Water Approvals](#)

[05.01: Seal Selection Guide](#)

[10.01: Regulatory Approval Reference Guide](#)

[16.12: Style W77 AGS Vic-Ring Systems](#)

[20.03: Style W77 AGS Coupling](#)

[20.05: AGS Grooved End Fittings](#)

[25.09: Advanced Groove System \(AGS\) Roll Groove Specifications](#)

[26.01: Design Data](#)

[29.01: Terms and Conditions/Warranty](#)

[I-W100: Field Installation Handbook Advanced Groove System Products](#)

User Responsibility for Product Selection and Suitability

Each user bears final responsibility for making a determination as to the suitability of Victaulic products for a particular end-use application, in accordance with industry standards and project specifications, and the applicable building codes and related regulations as well as Victaulic performance, maintenance, safety, and warning instructions. Nothing in this or any other document, nor any verbal recommendation, advice, or opinion from any Victaulic employee, shall be deemed to alter, vary, supersede, or waive any provision of Victaulic Company's standard conditions of sale, installation guide, or this disclaimer.

Intellectual Property Rights

No statement contained herein concerning a possible or suggested use of any material, product, service, or design is intended, or should be construed, to grant any license under any patent or other intellectual property right of Victaulic or any of its subsidiaries or affiliates covering such use or design, or as a recommendation for the use of such material, product, service, or design in the infringement of any patent or other intellectual property right. The terms "Patented" or "Patent Pending" refer to design or utility patents or patent applications for articles and/or methods of use in the United States and/or other countries.

Note

This product shall be manufactured by Victaulic or to Victaulic specifications. All products to be installed in accordance with current Victaulic installation/assembly instructions. Victaulic reserves the right to change product specifications, designs and standard equipment without notice and without incurring obligations.

Installation

Reference should always be made to the Victaulic installation handbook or installation instructions of the product you are installing. Handbooks are included with each shipment of Victaulic products, providing complete installation and assembly data, and are available in PDF format on our website at www.victaulic.com.

Warranty

Refer to the Warranty section of the current Price List or contact Victaulic for details.

Trademarks

Victaulic and all other Victaulic marks are the trademarks or registered trademarks of Victaulic Company, and/or its affiliated entities, in the U.S. and/or other countries.