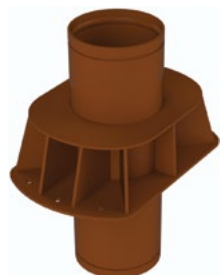


# Victaulic® AGS Carbon Steel Heavy Riser Anchor

## No. WA20



No. WA20



### 1.0 PRODUCT DESCRIPTION

#### Available Sizes

- 14 – 24"/DN350 – DN600

#### Maximum Working Pressure

- Accommodates pressures ranging from full vacuum (29.9 in Hg) up to 500 psi/3447 kPa/34 bar

#### Application

- For use on carbon steel NPS riser piping
- An engineered pipe anchor used to assist in directing pipe movement in piping system risers that are designed and installed exclusively with Victaulic grooved products
- Exclusively for use with pipe and Victaulic products which feature the Victaulic Advanced Groove System (AGS) groove profile (see section 7.0 for Reference Materials)

### 2.0 CERTIFICATION/LISTINGS

Product designed and manufactured under Victaulic's Quality Management System, as certified by LPCB in accordance with ISO 9001:2018.

ALWAYS REFER TO ANY NOTIFICATIONS AT THE END OF THIS DOCUMENT REGARDING PRODUCT INSTALLATION, MAINTENANCE OR SUPPORT.

System No.		Location	
Submitted By		Date	

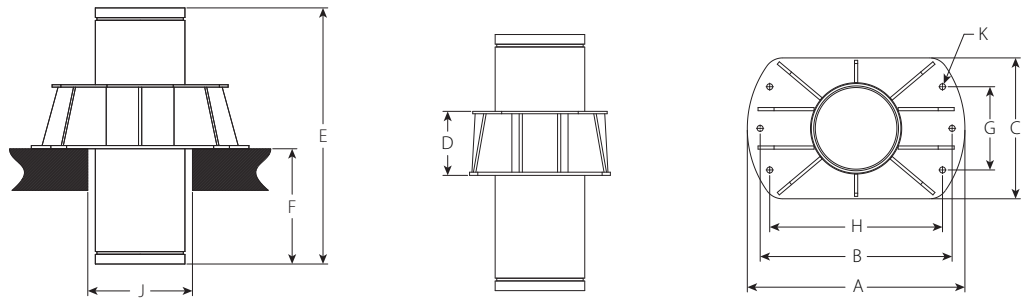
Spec Section		Paragraph	
Approved		Date	

### 3.0 SPECIFICATIONS – MATERIAL

- Standard weight carbon steel pipe conforming to ASTM A53 Grade B Type E.
- Brackets: Carbon steel conforming to ASTM A36.
- Standard coating: Orange enamel
- Fastening selection/method by others<sup>2</sup>

<sup>2</sup> Material, type, length, and capacity shall be the responsibility of others.

### 4.0 DIMENSIONS



Size		Dimensions										Weight
Nominal inches DN	Actual Outside Diameter inches mm	A inches mm	B inches mm	C inches mm	D inches mm	E inches mm	F inches mm	G inches mm	H inches mm	J Maximum Floor Hole Diameter inches mm	K inches mm	Approx. (Each) lb kg
14 DN350	14.000 355.6	34 864	30 762	22 559	10 254	40 1016	18 457	13 330	27 686	18 457	0.75 19	382.0 173.3
16 DN400	16.000 406.4	36 914	32 813	24 610	10 254	40 1016	18 457	13.5 343	29 737	20 508	0.75 19	421.3 191.1
18 DN450	18.000 457.2	38 965	34 864	26 660	10 254	40 1016	18 457	14.5 368	30.75 781	22 559	0.75 19	460.5 208.9
20 DN500	20.000 508.0	42 1067	36 914	28 711	12 305	44 1118	18 457	15 381	32.75 832	24 610	1 25	645.0 292.6
24 DN600	24.000 609.6	46 1168	38 965	32 813	12 305	44 1118	18 457	16 406	34.50 876	28 711	1 25	741.6 336.4

## 5.0 PERFORMANCE

Size		Maximum Working Pressure	Maximum Anchor Load <sup>3-5, 7</sup> Downward	Maximum Anchor Load <sup>3-7</sup> Upward
Nominal inches DN	Actual Outside Diameter inches mm			
14 DN350	14.000 355.6	500 3445	50000 222300	10000 44470
16 DN400	16.000 406.4	500 3445	65000 289000	13000 57800
18 DN450	18.000 457.0	500 3445	80000 355600	16000 71100
20 DN500	20.000 508.0	500 3445	100000 444600	20000 88900
22 DN550	22.000 559.0	400 2758	125000 555750	25000 111100
24 DN600	24.000 610.0	400 2758	150000 666900	30000 88900

<sup>3</sup> Engineer of Record and/or structural engineer are responsible to verify that the attachment method and supporting structure are structurally adequate to withstand the above noted Maximum Anchor Loads. For bolted applications, all reaction forces on the bolts shall be accounted for, including, but not limited to, tensile loads that result from downward loading as a result of bracket reacting with the structure, and tensile loads resulting from upward loading.

<sup>4</sup> Anchor is only designed for loading in the axial directions of the pipe, vertically upwards or downwards. Any lateral loading must be negated by the owner/engineer by the use of guides or other methods to ensure only vertical, axial loading is transmitted to the anchor.

<sup>5</sup> For applications with maximum anchor loads greater than listed above, please contact Victaulic.

<sup>6</sup> Acceptable methods of attachment include bolting or welding of the brackets to the structure. Chosen method is the responsibility of others.

<sup>7</sup> Maximum Anchor Load shall be the lesser of the value shown and the published Maximum End Load for the coupling selected to join the Anchor to the adjoining piping system.

## 6.0 NOTIFICATIONS

### ⚠ WARNING



- Read and understand all instructions before attempting to install, remove, adjust, or maintain any Victaulic piping products
- Depressurize and drain the piping system before attempting to install, remove, adjust, or maintain any Victaulic piping products
- Wear safety glasses, hardhat, and foot protection

Failure to follow these instructions could result in death or serious personal injury and property damage.

## 7.0 REFERENCE MATERIALS

---

[20.02: Victaulic AGS Rigid Coupling Style W07](#)

[20.03: Victaulic AGS Flexible Coupling Style W77](#)

[25.09: Victaulic AGS Roll Groove Specifications](#)

[I-100: Victaulic Field Installation Handbook](#)

[I-WA20: Victaulic No. WA20 AGS Heavy Riser Anchor Installation Instructions](#)

---

### User Responsibility for Product Selection and Suitability

Each user bears final responsibility for making a determination as to the suitability of Victaulic products for a particular end-use application, in accordance with industry standards and project specifications, as well as Victaulic performance, maintenance, safety, and warning instructions. Nothing in this or any other document, nor any verbal recommendation, advice, or opinion from any Victaulic employee, shall be deemed to alter, vary, supersede, or waive any provision of Victaulic Company's standard conditions of sale, installation guide, or this disclaimer.

### Intellectual Property Rights

No statement contained herein concerning a possible or suggested use of any material, product, service, or design is intended, or should be construed, to grant any license under any patent or other intellectual property right of Victaulic or any of its subsidiaries or affiliates covering such use or design, or as a recommendation for the use of such material, product, service, or design in the infringement of any patent or other intellectual property right. The terms "Patented" or "Patent Pending" refer to design or utility patents or patent applications for articles and/or methods of use in the United States and/or other countries.

### Note

This product shall be manufactured by Victaulic or to Victaulic specifications. All products to be installed in accordance with current Victaulic installation/assembly instructions. Victaulic reserves the right to change product specifications, designs and standard equipment without notice and without incurring obligations.

### Installation

Reference should always be made to the Victaulic installation handbook or installation instructions of the product you are installing. Handbooks are included with each shipment of Victaulic products, providing complete installation and assembly data, and are available in PDF format on our website at [www.victaulic.com](http://www.victaulic.com).

### Warranty

Refer to the Warranty section of the current Price List or contact Victaulic for details.

### Trademarks

*Victaulic* and all other Victaulic marks are the trademarks or registered trademarks of Victaulic Company, and/or its affiliated entities, in the U.S. and/or other countries.