

Victaulic® Portable Cut Grooving Tool for AWWA Ductile Iron Pipe CG336



1.0 PRODUCT DESCRIPTION

Grooving Capability

- AWWA Ductile Iron Pipe: 3 – 36"

Application

- Electric-drive portable field tool
- Designed to simultaneously square cut and groove AWWA ductile iron pipe ends
- For use with all coating and lining types
- Mounts on pipe outside diameter
- Hands-free operation with auto-feed cutting and grooving
- Produces uniform groove depth

Performance

		CG336 RATINGS - MAXIMUM PIPE SIZE AND WALL THICKNESS CAPACITY														
		Pipe Size														
		in DN														
Pipe Material	Component	3 80	4 100	6 150	8 200	10 250	12 300	14 350	16 400	18 450	20 500	24 600	30 750	36 900		
Ductile Iron Pipe	Base Kit	-														
	Pipe Size Kit 3-12"	Class 53 Min.							-							
	Pipe Size Kit 14-18"	-							Class 53 Min.				-			
	Pipe Size Kit 20-24"	-					-		-					Class 53 Min.		-
	Pipe Size Kit 30-36"	-										-		Class 53 Min.		Class 53 Min.
	Complete Kit	Class 53 Min.														

2.0 CERTIFICATION/LISTINGS



This product is designed and manufactured under the Victaulic Quality Management System, as certified by LPCB in accordance with ISO-9001:2015.

3.0 SPECIFICATIONS

Drive Requirements: Self-contained

Power Requirements:

- 120 V, 50 – 60 Hz, 20 Amp

ALWAYS REFER TO ANY NOTIFICATIONS AT THE END OF THIS DOCUMENT REGARDING PRODUCT INSTALLATION, MAINTENANCE OR SUPPORT.

4.0 ACCESSORIES/COMPONENTS

Base Kit: Includes common tools and components utilized interchangeably with each individual pipe size kit

- (1) Steel Job Box
 - (2) Tool Head Assemblies (Electric)
 - (1) 120 VAC Electric Drive Assembly
- (1) Tool Bag
 - Hand Tools
 - Maintenance Tools

Pipe Size Kits: (Select individual, multiple, or all size ranges): Includes all necessary components to join with Base Kit for full pipe end and groove cutting

3 – 12"

- (1) Wooden Crate
 - 3 – 12" Ring Tool
 - Lifting Eyes
- (2) Plastic Boxes with Accessories
 - Pipe Spacers
 - "A" Dimension Modules
 - Cutoff Blades
 - Tool Bits

14 – 18"

- (1) Wooden Crate
 - 14 – 18" Ring Tool
 - Lifting Eyes
- (1) Plastic Box with Accessories
 - Pipe Spacers
 - "A" Dimension Modules
 - Cutoff Blades
 - Tool Bits

20 – 24"

- (1) Wooden Crate
 - 20 – 24" Ring Tool
 - Lifting Eyes
- (1) Plastic Box with Accessories
 - Pipe Spacers
 - "A" Dimension Modules
 - Cutoff Blades
 - Tool Bits

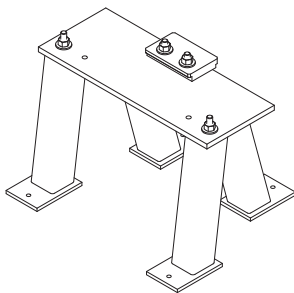
30 – 36"

- (1) Wooden Crate
 - 30 – 36" Ring Tool
 - Lifting Eyes
- (1) Plastic Box with Accessories
 - Pipe Spacers
 - "A" Dimension Modules
 - Cutoff Blades
 - Tool Bits

Complete Kit: Includes base kit and all four pipe size kits

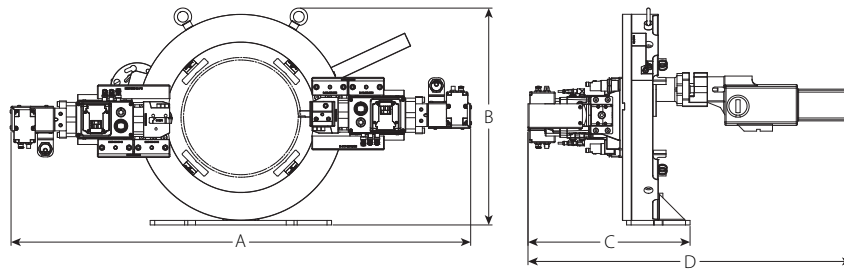
Accessories:

Optional Platform

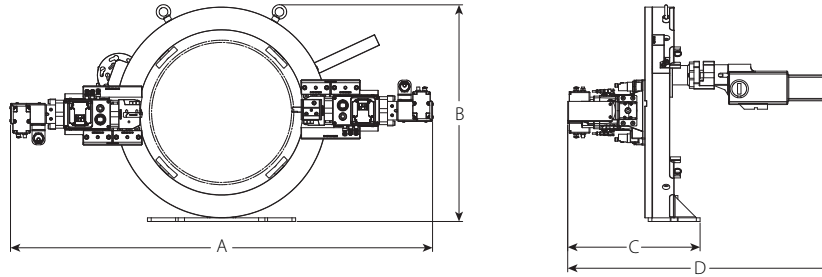


5.0 DIMENSIONS

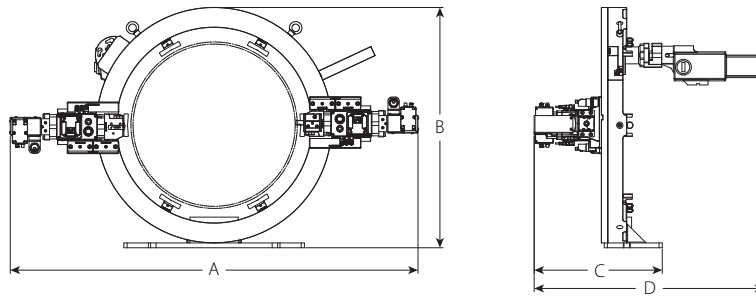
CG336 Portable Cut Grooving Tool



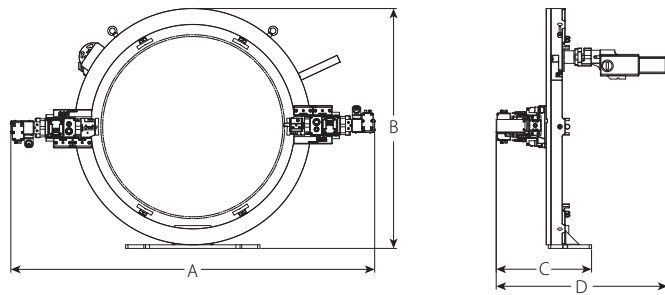
3 – 12"



14 – 18"



20 – 24"



30 – 36"

Tool Size in	Dimensions				Assembled Weight lb kg
	A in mm	B in mm	C in mm	D in mm	
3 – 12	50 1270	24 609.6	18 457.2	36 914.4	305 138.3
14 – 18	56 1422.4	30 762	18 457.2	36 914.4	334 151.5
20 – 24	63 1600.2	38 965.2	20 508	36 914.4	425 192.8
30 – 36	75 1905	50 1270	20 508	36 914.4	507 230

6.0 NOTIFICATIONS

WARNING



Failure to follow instructions and warnings could result in death or serious personal injury and property damage.

- Before setting up, operating, or servicing the CG336 Portable Cut Grooving Tool, read all instructions in the TM-CG336 Operating and Maintenance and all warning labels on the tool.
- Wear safety glasses, hardhat, foot protection, and hearing protection while working around the tool.

7.0 REFERENCE MATERIALS

[25.05: Radius Cut Groove Specifications](#)

User Responsibility for Product Selection and Suitability

Each user bears final responsibility for making a determination as to the suitability of Victaulic products for a particular end-use application, in accordance with industry standards and project specifications, as well as Victaulic performance, maintenance, safety, and warning instructions. Nothing in this or any other document, nor any verbal recommendation, advice, or opinion from any Victaulic employee, shall be deemed to alter, vary, supersede, or waive any provision of Victaulic Company's standard conditions of sale, installation guide, or this disclaimer.

Intellectual Property Rights

No statement contained herein concerning a possible or suggested use of any material, product, service, or design is intended, or should be construed, to grant any license under any patent or other intellectual property right of Victaulic or any of its subsidiaries or affiliates covering such use or design, or as a recommendation for the use of such material, product, service, or design in the infringement of any patent or other intellectual property right. The terms "Patented" or "Patent Pending" refer to design or utility patents or patent applications for articles and/or methods of use in the United States and/or other countries.

Note

This product shall be manufactured by Victaulic or to Victaulic specifications. All products to be installed in accordance with current Victaulic installation/assembly instructions. Victaulic reserves the right to change product specifications, designs and standard equipment without notice and without incurring obligations.

Installation

Reference should always be made to the Victaulic installation handbook or installation instructions of the product you are installing. Handbooks are included with each shipment of Victaulic products, providing complete installation and assembly data, and are available in PDF format on our website at www.victaulic.com.

Warranty

Refer to the Warranty section of the current Price List or contact Victaulic for details.

Trademarks

Victaulic and all other Victaulic marks are the trademarks or registered trademarks of Victaulic Company, and/or its affiliated entities, in the U.S. and/or other countries.