

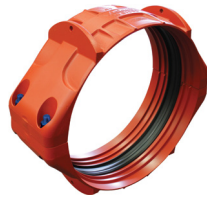
# Victaulic® Couplings Performance Data for Cross-Linked Polyethylene (PEX) Pipe



Style 905



Style 907



Style 908

## 1.0 PRODUCT DESCRIPTION

### Available Sizes

- 63 – 710 mm ISO cross-linked polyethylene (PE-Xa)

### Pipe Materials

- PE-Xa pipe conforming to DIN 16892 and DIN 16893 (SDR 6 – 21)

### Operating Temperature Range

- -20°F to +230°F/-29°C to +110°C (subject to pipe manufacturer's temperature limit and Victaulic gasket compatibility)
- For available gaskets and performance options, reference [publication 19.07](#) (Style 905), [publication 19.10](#) (Style 907), and [publication 19.09](#) (Style 908)

### Maximum Working Pressure

- Couplings are rated to the pressure rating of the PE-Xa pipe on which they are installed (refer to section 2.0 Performance for further information)

### Function

- Couplings may be specified for use on PE-Xa pipe, ranging in wall thickness from SDR 6 to 21.
- Suitable for use on services recommended by the PE-Xa pipe manufacturer
- Couplings join PE-Xa pipe to PE-Xa pipe and PE-Xa pipe to pipe components including carbon steel pipe, stainless steel pipe, ductile iron/stainless steel/carbon steel fittings, and valves

ALWAYS REFER TO ANY NOTIFICATIONS AT THE END OF THIS DOCUMENT REGARDING PRODUCT INSTALLATION, MAINTENANCE OR SUPPORT.

## 2.0 PERFORMANCE

### Style 905 and Style 907 – ISO Standard

Pressure Rating: joints made with Style 905 and Style 907 couplings meet the pressure rating of the PE-Xa pipe.

Nominal Size	PE-Xa Pipe <sup>1</sup> Maximum Joint Working Pressure						
	SDR						
	6	7.4	9	11	13.6	16.2	21
mm	Bar kPa psi						
63 – 355	30 3000 435	24 2400 348	19 1900 276	15 1500 218	12 1200 174	10 1000 145	8 800 116

<sup>1</sup> PE-Xa pipe conforming to DIN 16892/16893 at 68°F/20°C and safety factor C = 1.25. Reference pipe manufacturer data for de-rating factors at other temperatures.

### Style 908 – ISO Standard

Pressure Rating: joints made with Style 908 couplings meet the pressure rating of the PE-Xa pipe.

Nominal Size	PE-Xa Pipe <sup>2</sup> Maximum Joint Working Pressure						
	SDR						
	6	7.4	9	11	13.6	16.2	21
mm	Bar kPa psi						
400 – 630	19* 1900 276	19* 1900 276	19 1900 276	15 1500 218	12 1200 174	10 1000 145	8 800 116
710	12* 1200 174	12* 1200 174	12* 1200 174	12* 1200 174	12 1200 174	10 1000 145	8 800 116

<sup>2</sup> PE-Xa pipe conforming to DIN 16892/16893 at 68°F/20°C and safety factor C = 1.25. Reference pipe manufacturer data for de-rating factors at other temperatures.

\* Maximum joint working pressure may be increased to full pipe pressure rating with the use of pipe end stiffeners. Contact Victaulic for details.

## 2.1 PERFORMANCE

### Style 905 and Style 907 – ISO Standard

Allowable Tensile Load (ATL): joints made with Style 905 and Style 907 couplings can sustain tensile loads noted below.

Nominal Size mm	Allowable Tensile Loads <sup>3</sup>						
	SDR						
	6	7.4	9	11	13.6	16.2	21
	N lb						
63	6975	6975	5916	4946	4083	3434	–
	1568	1568	1330	1112	918	772	–
75	9933	9933	8340	6913	5792	4924	3830
	2233	2233	1875	1554	1302	1107	861
90	14248	14248	12032	10000	8318	7046	5494
	3203	3203	2705	2248	1870	1584	1235
110	21360	21360	17913	14906	12304	10462	8274
	4802	4802	4027	3351	2766	2352	1860
125	27508	27508	23313	19305	15880	13465	10645
	6184	6184	5241	4340	3570	3027	2393
140	34576	34576	29091	24100	19915	17028	13314
	7773	7773	6540	5418	4477	3828	2993
160	45087	45087	37921	31645	26071	22152	17482
	10136	10136	8525	7114	5861	4980	3930
180	56991	56991	47912	39998	33050	27948	21974
	12812	12812	10771	8992	7430	6283	4940
200	70286	70286	59308	49082	40608	34678	27250
	15801	15801	13333	11034	9129	7796	6126
225	89169	89169	75059	62222	51573	43744	34487
	20046	20046	16874	13988	11594	9834	7753
250	110022	110022	92376	76919	63530	54184	42240
	24734	24734	20767	17292	14282	12181	9496
280	138002	138002	116045	96406	79663	67751	53259
	31024	31024	26088	21673	17909	15231	11973
315	174699	174699	146827	122108	100921	85900	67084
	39274	39274	33008	27451	22688	19311	15081
355	221606	221606	186603	154954	127971	108750	85179
	49819	49819	41950	34835	28769	24448	19149

<sup>3</sup> Allowable tensile loads shown are straight are for straight pulling of unpressurized assembled pipe sections for a maximum period of one half hour at 68°F/20°C. Consult pipe manufacturer's recommendation for ATL reduction factors at elevated temperatures.

### Style 908 – ISO Standard

Allowable Tensile Load (ATL): joints made with Style 908 couplings can sustain tensile loads noted below.

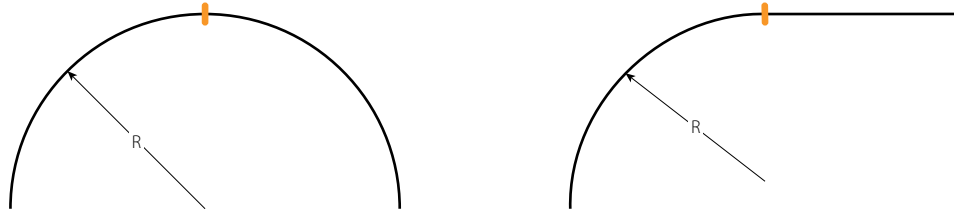
Nominal Size mm	Allowable Tensile Loads <sup>3</sup>						
	SDR						
	6	7.4	9	11	13.6	16.2	21
	N lb						
400	281572	281572	236761	196816	162427	138193	108457
	63300	63300	53226	44246	36515	31067	24382
450	356182	356182	299717	249438	205717	174975	137339
	80073	80073	67379	56076	46247	39336	30875
500	440636	440636	369505	307675	253477	216090	169633
	99059	99059	83068	69168	56984	48579	38135
560	552612	552612	463536	386306	318644	271003	212274
	124232	124232	104207	86845	71634	60924	47721
630	699487	699487	584381	489207	405286	342784	268339
	157251	157251	131374	109978	91112	77061	60325
710	888728	888728	742306	620674	511888	435001	340720
	199794	199794	166877	139533	115077	97792	76597

<sup>3</sup> Allowable tensile loads shown are straight are for straight pulling of unpressurized assembled pipe sections for a maximum period of one half hour at 68°F/20°C. Consult pipe manufacturer's recommendation for ATL reduction factors at elevated temperatures.

## 2.2 PERFORMANCE

### Style 905 and Style 907 – ISO Standard

Bend Radius: joints made with Style 905 and Style 907 couplings can sustain bend radii as noted below.

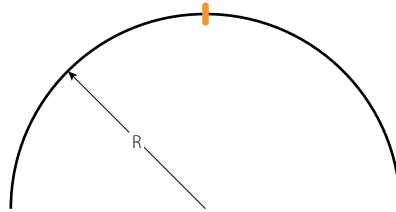


Nominal Size mm	Minimum Recommended Bend Radius SDR						
	6	7.4	9	11	13.6	16.2	21
	mm inches						
63	1827 72	1575 62	1575 62	1575 62	1575 62	1701 67	1701 67
75	2175 86	1875 74	1875 74	1875 74	1875 74	2025 80	2025 80
90	2610 103	2250 89	2250 89	2250 89	2250 89	2430 96	2430 96
110	3190 126	2750 108	2750 108	2750 108	2750 108	2970 117	2970 117
125	3625 143	3125 123	3125 123	3125 123	3125 123	3375 133	3375 133
140	4060 160	3500 138	3500 138	3500 138	3500 138	3780 149	3780 149
160	4640 183	4000 157	4000 157	4000 157	4000 157	4320 170	4320 170
180	5220 206	4500 177	4500 177	4500 177	4500 177	4860 191	4860 191
200	5800 228	5000 197	5000 197	5000 197	5000 197	5400 213	5400 213
225	6525 257	5625 221	5625 221	5625 221	5625 221	6075 239	6075 239
250	7250 285	6250 264	6250 264	6250 264	6250 264	6750 266	6750 266
280	8120 320	7000 276	7000 276	7000 276	7000 276	7560 298	7560 298
315	9135 360	7875 310	7875 310	7875 310	7875 310	8505 335	8505 335
355	10295 405	8875 349	8875 349	8875 349	8875 349	9585 377	9585 377

## 2.2 PERFORMANCE (CONTINUED)

### Style 908 – ISO Standard







Bend Radius: joints made with Style 908 couplings can sustain bend radii as noted below.



Nominal Size mm	Minimum Recommended Bend Radius SDR						
	6	7.4	9	11	13.6	16.2	21
	mm inches						
400	11600 457	10000 394	10000 394	10000 394	10000 394	10800 425	10800 425
450	13050 514	11250 443	11250 443	11250 443	11250 443	12150 478	12150 478
500	14500 571	12500 492	12500 492	12500 492	12500 492	13500 531	16000 630
560	16240 639	14000 551	14000 551	14000 551	14000 551	15120 595	19320 761
630	18270 719	15750 620	15750 620	15750 620	15750 620	17640 694	23310 918
710	20590 811	17750 699	17750 699	17750 699	17750 699	21300 839	28400 1118

### 3.0 NOTIFICATIONS

**⚠ WARNING**



- Read and understand all instructions before attempting to install, remove, adjust, or maintain any Victaulic piping products.
- Depressurize and drain the piping system before attempting to install, remove, adjust, or maintain any Victaulic piping products.
- Wear safety glasses, hardhat, and foot protection.

Failure to follow these instructions could result in death or serious personal injury and property damage.

### 4.0 REFERENCE MATERIALS

- [I-900: Victaulic HDPE Products Installation and Assembly Manual](#)
- [I-905.Metric: Victaulic Style 905 Installation Instructions](#)
- [I-905.REUSE: Victaulic Style 905 Reuse Instructions](#)
- [I-907.Metric: Victaulic Style 907 Installation Instructions](#)
- [I-908: Victaulic Style 908 Installation Instructions](#)
- [11.07: Victaulic Style 926 Mechanical-T Spigot Outlet](#)
- [19.07: Victaulic Style 905 Coupling for Plain End HDPE Pipe](#)
- [19.09: Victaulic Style 908 Coupling for Double Grooved HDPE Pipe](#)
- [19.10: Victaulic Style 907 Transition Coupling for HDPE-to-Steel](#)
- [24.06: Victaulic Cut Grooving Tools for HDPE Models CG3100, CG3300 and CG3500](#)
- [25.01: Victaulic Original Groove System \(OGS\) Groove Specifications](#)
- [25.16: Victaulic High Density Polyethylene \(HDPE\) Cut Groove Specifications](#)
- [I-ENDCAP: Victaulic End Caps Installation Instructions](#)
- [I-IMPACT: Impact Tool Usage Guidelines](#)

#### User Responsibility for Product Selection and Suitability

Each user bears final responsibility for making a determination as to the suitability of Victaulic products for a particular end-use application, in accordance with industry standards and project specifications, as well as Victaulic performance, maintenance, safety, and warning instructions. Nothing in this or any other document, nor any verbal recommendation, advice, or opinion from any Victaulic employee, shall be deemed to alter, vary, supersede, or waive any provision of Victaulic Company's standard conditions of sale, installation guide, or this disclaimer.

#### Intellectual Property Rights

No statement contained herein concerning a possible or suggested use of any material, product, service, or design is intended, or should be construed, to grant any license under any patent or other intellectual property right of Victaulic or any of its subsidiaries or affiliates covering such use or design, or as a recommendation for the use of such material, product, service, or design in the infringement of any patent or other intellectual property right. The terms "Patented" or "Patent Pending" refer to design or utility patents or patent applications for articles and/or methods of use in the United States and/or other countries.

#### Note

This product shall be manufactured by Victaulic or to Victaulic specifications. All products to be installed in accordance with current Victaulic installation/assembly instructions. Victaulic reserves the right to change product specifications, designs and standard equipment without notice and without incurring obligations.

#### Installation

Reference should always be made to the Victaulic installation handbook or installation instructions of the product you are installing. Handbooks are included with each shipment of Victaulic products, providing complete installation and assembly data, and are available in PDF format on our website at [www.victaulic.com](http://www.victaulic.com).

#### Warranty

Refer to the Warranty section of the current Price List or contact Victaulic for details.

#### Trademarks

*Victaulic* and all other Victaulic marks are the trademarks or registered trademarks of Victaulic Company, and/or its affiliated entities, in the U.S. and/or other countries.