

Victaulic® Mining Header

Style 156



1.0 PRODUCT DESCRIPTION

Available Sizes

- 2"/DN50, 2 ½", 3"/DN80 with 1"/DN25 outlets

Maximum Working Pressure

- Accommodates pressures ranging from full vacuum (29.9 in Hg/760 mm Hg) up to 200 psi/ 1379 kPa/14 bar

Operating Temperature

- Dependent on gasket/seal selection from section 3.0

Application

- Acts as redistribution point within underground mining
- Designed for use in utility air or water services
- Strains debris to protect downstream equipment
- Available with 3, 4, 5 or 6 outlet options
- Factory assembled to reduce onsite installation and handling
- Male NPT pipe threaded outlets with ID chamfer for threaded coupling or bull hose spud connector

2.0 CERTIFICATION/LISTINGS

Product designed and manufactured under Victaulic's Quality Management System, as certified in accordance with ISO 9001:2015.

ALWAYS REFER TO ANY NOTIFICATIONS AT THE END OF THIS DOCUMENT REGARDING PRODUCT INSTALLATION, MAINTENANCE OR SUPPORT.



3.0 SPECIFICATIONS – MATERIAL

Style 156 Header body and pipe spools

Standard weight carbon steel conforming to ASTM A53 Grade B.

Number of 1"/DN25 Outlets (Specify Choice):

- 3
- 4
- 5
- 6

Coupling and Butterfly Valve Housings, Strainer Body, and End Caps

Ductile iron conforming to ASTM A536, Grade 65-45-12

Standard coating: Orange and Black Enamel.

Coupling Gasket and Butterfly Valve Lining/Seat: (specify choice)

Grade "E" EPDM

EPDM (Green color code). Temperature range –30°F to +230°F/–34°C to +110°C. May be specified for hot water service plus a variety of dilute acids, oil-free air and many chemical services within the specified temperature range. NOT RECOMMENDED FOR PETROLEUM SERVICES OR STEAM SERVICES.

Grade "T" Nitrile

Nitrile (Orange stripe color code). Temperature range -20°F to +180°F/-29°C to +82°C. May be specified for petroleum products, air with oil vapors, and vegetable and mineral oils within the specified temperature range. Not compatible for hot water services over +150°F/+66°C or for hot dry air over +140°F/+60°C.

Bolts/Nuts: (specify choice)

Standard: Carbon steel oval neck track bolts meeting the mechanical property requirements of ASTM A449 (imperial) and ISO 898-1 Class 9.8 (M10-M16) Class 8.8 (M20 and greater). Carbon steel hex nuts meeting the mechanical property requirements of ASTM A563 Grade B (imperial - heavy hex nuts) and ASTM A563M Class 9 (metric - hex nuts). Track bolts and hex nuts are zinc electroplated per ASTM B633 FE/ZN5, finish Type III (imperial) or Type II (metric).

Optional: Stainless steel oval neck track bolts meeting the mechanical property requirements of ASTM F593, Group 2 (316 stainless steel), condition CW. Stainless steel heavy nuts meeting the mechanical property requirements of ASTM F594, Group 2 (316 stainless steel), condition CW. Bolts and nuts include galling reducing coating.

Series 700 Butterfly Valve

Body: Carbon steel, elastomer lined

Upper and Lower Stem: 416 stainless steel

Disc: (specify choice)

Standard: Aluminum bronze

Optional: 316 stainless steel

Handle: Cast ductile iron

O-Ring: Same as seat

3.0 SPECIFICATIONS – MATERIAL (CONTINUED)

Series 722 Ball Valve

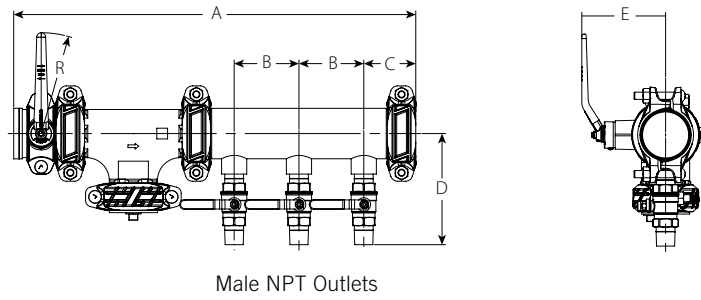
- Body: Forged brass, per ASTM B124
- Ball: Brass, chrome plated, per ASTM B124
- Stem: Brass, per ASTM B124
- Seat: Polytetrafluoroethylene (PTFE)
- Handle: Carbon steel, zinc plated, with vinyl grip
- Stem Nut: Carbon steel, zinc plated
- Stem Washer: Polytetrafluoroethylene (PTFE)

Style 730 Strainer Basket (Specify mesh choice):

- Stainless steel type 304, frame and mesh.
 - 12 mesh
 - 40 mesh

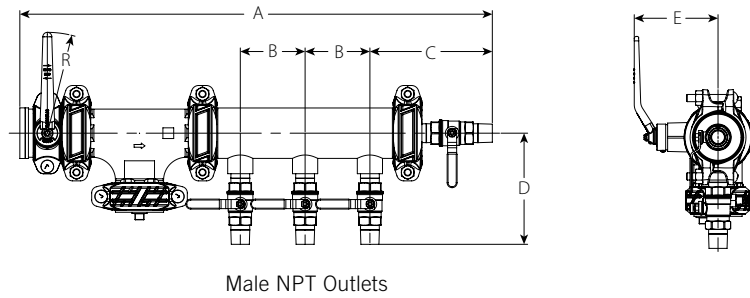
4.0 DIMENSIONS

Style 156 3 Outlet Header



Size		Dimensions						Weight	
Nominal inches DN	Actual Outside Diameter inches mm	A inches mm	B inches mm	C inches mm	D inches mm	E inches mm	R inches mm	Approx. (Each) lb kg	
2 x 1 DN50 x DN25	2.375 x 1.315 60.3 x 33.7	25.63 651	4.50 114	3.63 92	7.13 181	4.88 124	5.50 140	35.3 16.0	
2½ x 1	2.875 x 1.315 73.0 x 33.7	26.88 683	4.50 114	3.63 92	7.38 187	5.50 140	7.00 178	43.4 19.7	
3 x 1 DN80 x DN25	3.500 x 1.315 88.9 x 33.7	27.88 708	4.50 114	3.63 92	7.75 197	5.75 146	7.00 178	54.7 24.8	

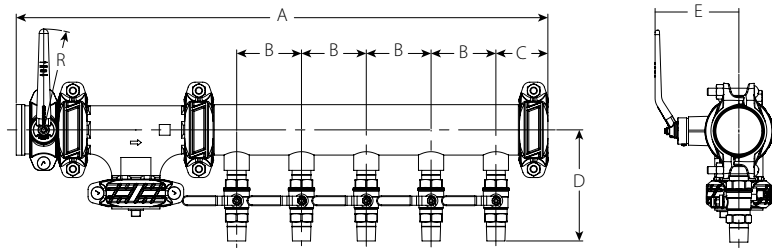
Style 156 4 Outlet Header



Size		Dimensions						Weight	
Nominal inches DN	Actual Outside Diameter inches mm	A inches mm	B inches mm	C inches mm	D inches mm	E inches mm	R inches mm	Approx. (Each) lb kg	
2 x 1 DN50 x DN25	2.375 x 1.315 60.3 x 33.7	30.50 775	4.50 114	8.50 216	7.13 181	4.88 124	5.50 140	38.7 17.6	
2½ x 1	2.875 x 1.315 73.0 x 33.7	31.75 806	4.50 114	8.50 216	7.38 187	5.50 140	7.00 178	47.0 21.3	
3 x 1 DN80 x DN25	3.500 x 1.315 88.9 x 33.7	32.75 832	4.50 114	8.50 216	7.75 197	5.75 146	7.00 178	58.0 26.3	

4.0 DIMENSIONS (CONTINUED)

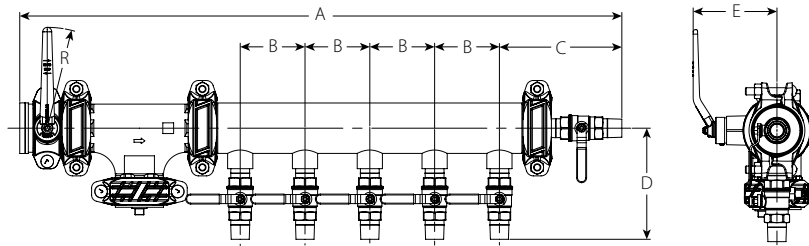
Style 156 5 Outlet Header



Male NPT Outlets

Size		Dimensions						Weight	
Nominal inches DN	Actual Outside Diameter inches mm	A inches mm	B inches mm	C inches mm	D inches mm	E inches mm	R inches mm	Approx. (Each) lb kg	
2 x 1 DN50 x DN25	2.375 x 1.315	34.63	4.50	3.63	7.13	4.88	5.50	42.5	
	60.3 x 33.7	879	114	92	181	124	140	19.3	
2½ x 1	2.875 x 1.315	35.88	4.50	3.63	7.38	5.50	7.00	55.4	
	73.0 x 33.7	911	114	92	187	140	178	25.1	
3 x 1 DN80 x DN25	3.500 x 1.315	36.88	4.50	3.63	7.75	5.75	7.00	68.1	
	88.9 x 33.7	937	114	92	197	146	178	30.9	

Style 156 6 Outlet Header



Male NPT Outlets







Size		Dimensions						Weight	
Nominal inches DN	Actual Outside Diameter inches mm	A inches mm	B inches mm	C inches mm	D inches mm	E inches mm	R inches mm	Approx. (Each) lb kg	
2 x 1 DN50 x DN25	2.375 x 1.315	39.50	4.50	8.50	7.13	4.88	5.50	45.9	
	60.3 x 33.7	1003	114	216	181	124	140	20.8	
2½ x 1	2.875 x 1.315	40.75	4.50	8.50	7.38	5.50	7.00	58.9	
	73.0 x 33.7	1035	114	216	187	140	178	26.7	
3 x 1 DN80 x DN25	3.500 x 1.315	41.75	4.50	8.50	7.75	5.75	7.00	71.5	
	88.9 x 33.7	1060	114	216	197	146	178	32.4	

5.0 PERFORMANCE

Size inches DN	Actual Outside Diameter	Maximum Working Pressure
	inches mm	psi kPa
2 x 1 DN50 x DN25	2.375 x 1.315	200
	60.3 x 33.7	1379
2½ x 1	2.875 x 1.315	200
	73.0 x 33.7	1379
3 x 1 DN80 x DN25	3.500 x 1.315	200
	88.9 x 33.7	1379

6.0 NOTIFICATIONS

⚠ WARNING

- Read and understand all instructions before attempting to install, remove, adjust, or maintain any Victaulic piping products.
- Depressurize and drain the piping system before attempting to install, remove, adjust, or maintain any Victaulic piping products.
- Wear safety glasses, hardhat, and foot protection.

Failure to follow these instructions could result in death or serious personal injury and property damage.

7.0 REFERENCE MATERIALS

- [05.01: Seal Selection Guide](#)
- [06.15: Pressure Ratings and End Loads for Victaulic Couplings on Steel Pipe](#)
- [06.23 Victaulic QuickVic Rigid Coupling Style 107N](#)
- [08.05 Victaulic Butterfly Valve Series 700](#)
- [08.15 Victaulic Brass Body Ball Valve Series 722](#)
- [09.02 Vic-Strainer Series 730](#)
- [29.01: Terms and Conditions/Warranty](#)
- [I-100: Field Installation Handbook](#)
- [I-730: Series 730 Installation and Servicing Instructions](#)
- [I-ENDCAP: Victaulic End Cap Installation Safety Instructions](#)
- [I-IMPACT: Victaulic Impact Tool Usage Guidelines](#)

User Responsibility for Product Selection and Suitability

Each user bears final responsibility for making a determination as to the suitability of Victaulic products for a particular end-use application, in accordance with industry standards and project specifications, as well as Victaulic performance, maintenance, safety, and warning instructions. Nothing in this or any other document, nor any verbal recommendation, advice, or opinion from any Victaulic employee, shall be deemed to alter, vary, supersede, or waive any provision of Victaulic Company's standard conditions of sale, installation guide, or this disclaimer.

Intellectual Property Rights

No statement contained herein concerning a possible or suggested use of any material, product, service, or design is intended, or should be construed, to grant any license under any patent or other intellectual property right of Victaulic or any of its subsidiaries or affiliates covering such use or design, or as a recommendation for the use of such material, product, service, or design in the infringement of any patent or other intellectual property right. The terms "Patented" or "Patent Pending" refer to design or utility patents or patent applications for articles and/or methods of use in the United States and/or other countries.

Note

This product shall be manufactured by Victaulic or to Victaulic specifications. All products to be installed in accordance with current Victaulic installation/assembly instructions. Victaulic reserves the right to change product specifications, designs and standard equipment without notice and without incurring obligations.

Installation

Reference should always be made to the Victaulic installation handbook or installation instructions of the product you are installing. Handbooks are included with each shipment of Victaulic products, providing complete installation and assembly data, and are available in PDF format on our website at www.victaulic.com.

Warranty

Refer to the Warranty section of the current Price List or contact Victaulic for details.

Trademarks

Victaulic and all other Victaulic marks are the trademarks or registered trademarks of Victaulic Company, and/or its affiliated entities, in the U.S. and/or other countries.