

Style 358 Reducing Coupling

PGS™-300



WARNING

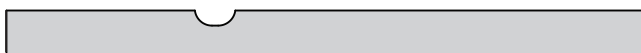


- Read and understand all instructions before attempting to install any Victaulic piping products.
- Depressurize and drain the piping system before attempting to install, remove, adjust, or maintain any Victaulic piping products.
- Wear safety glasses, hardhat, and foot protection.

Failure to follow these instructions could result in death or serious personal injury and property damage.

IMPORTANT INFORMATION

PGS™-300 Groove Profile for CPVC/PVC Mating Components



The Style 358 Reducing Coupling is designed for use **ONLY** with CPVC/PVC mating components that are prepared to Victaulic PGS™-300 groove specifications. Refer to Victaulic publication 25.18 for the PGS™-300 groove specifications, which can be downloaded at victaulic.com.

For Vertical Installations: An assembly washer is recommended to prevent smaller pipe from telescoping inside larger pipe in vertical installations. Contact Victaulic for details. **NOTE:** Failure to install the assembly washer where specified may result in joint leakage and property damage.

DO NOT ATTEMPT TO USE A STYLE 358 REDUCING COUPLING TO ATTACH TO AN END CAP. Refer to the I-356 Transition Coupling instructions for methods of attaching an end cap to the CPVC/PVC piping system.

INSTALLATION

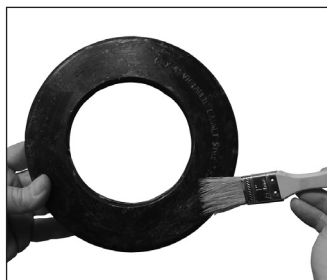
1. CHECK PIPE ENDS: The outside surface of the CPVC/PVC mating components, between the groove and the mating component end, shall be smooth and free from indentations and projections to ensure a leak-tight seal. All oil, grease, dirt, and cutting particles shall be removed.

The CPVC/PVC mating components' outside diameter ("OD") and groove dimensions shall be within the tolerances published in current Victaulic PGS™-300 grooving specifications, publication 25.18, which can be downloaded at victaulic.com.

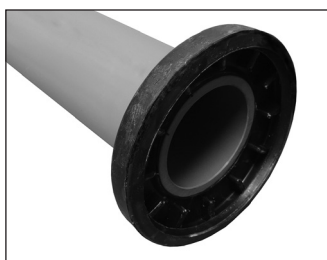
CAUTION

- A thin coat of Victaulic Lubricant shall be used to prevent the gasket from pinching/tearing during installation.
- The pipe manufacturer and Victaulic shall review any alternative lubricants to determine compatibility with the pipe and gasket.

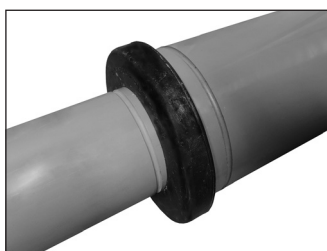
Failure to use a compatible lubricant will cause gasket damage, resulting in joint leakage and property damage.



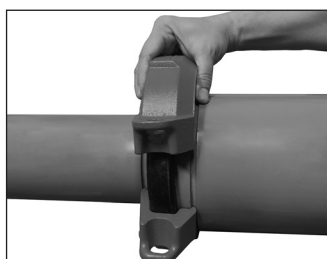
2. CHECK GASKET AND LUBRICATE: Check the gasket to verify that it is suitable for the intended service. The color code identifies the material grade. Refer to Victaulic publication 05.01 for the color code chart, which can be downloaded at victaulic.com. Apply a thin coat of Victaulic Lubricant to the gasket sealing lips and exterior.



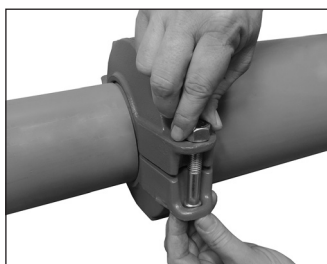
3. INSTALL GASKET: Install the smaller opening of the gasket over the smaller mating component end. **NOTE:** Verify that no portion of the gasket extends into the mating component's groove.



4. JOIN MATING COMPONENTS: Align the centerlines of the two grooved mating component ends, and insert the larger mating component end into the larger opening of the gasket. **NOTE:** Verify that no portion of the gasket extends into the groove of either mating component.



5. INSTALL HOUSINGS: Install the housings over the gasket. Verify that the larger openings of the housings are facing the larger mating component and that the housings' keys engage the grooves completely on both mating components.



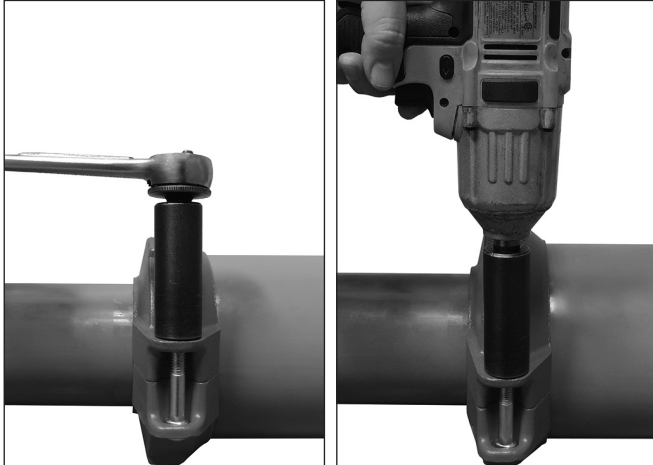
6. INSTALL BOLTS/NUTS: Install the bolts and thread a nut finger-tight onto each bolt. **NOTE:** Verify that the oval neck of each bolt seats properly in the bolt hole.

Style 358 Reducing Coupling

⚠ WARNING

- Nuts shall be tightened evenly by alternating sides until metal-to-metal contact occurs at the bolt pads.
- Keep hands away from coupling openings during tightening.

Failure to follow these instructions could cause joint failure, resulting in death or serious personal injury and property damage.



7. TIGHTEN NUTS: Tighten nuts evenly by alternating sides until metal-to-metal contact occurs at the bolt pads. Verify that the oval neck of each bolt seats properly in the bolt hole and that housings' keys engage the grooves completely on both mating components.

NOTICE

- It is important to tighten the nuts evenly by alternating sides to prevent gasket pinching.
- An impact wrench or standard socket wrench with a deep-well socket can be used to bring the bolt pads into metal-to-metal contact.
- Refer to the "Style 358 Helpful Information" and "Impact Wrench Usage Guidelines" sections.

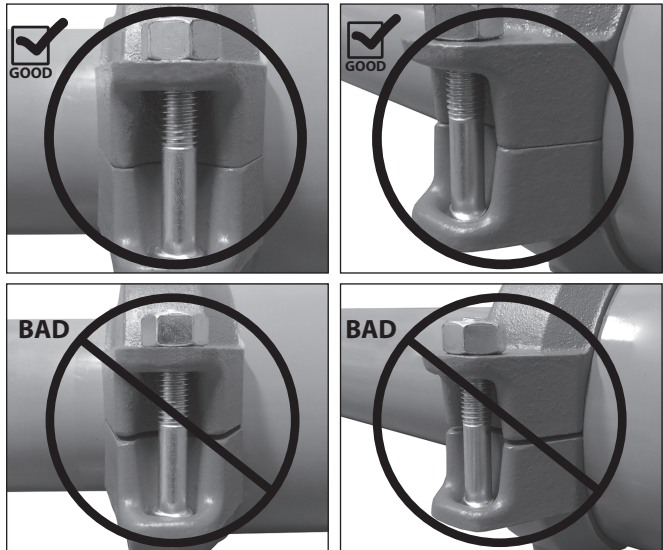
STYLE 358 HELPFUL INFORMATION

Nominal Size inches	Nut Size inches/Metric	Deep-Well Socket Size inches/mm
2 1/2 x 2	3/8 M10	1 1/16 17
3 x 2, 3 x 2 1/2, 4 x 2, 4 x 2 1/2, 4 x 3, 6 x 4	1/2 M12	7/8 18
8 x 6, 10 x 8	3/4 M20	1 1/4 30

⚠ WARNING

- Visual inspection of each joint is critical.
- Improperly assembled joints shall be corrected before the system is placed in service.

Failure to follow these instructions could cause joint failure, resulting in death or serious personal injury and property damage.



8. Visually inspect the bolt pads at each joint to verify that metal-to-metal contact is achieved across the entire bolt pad section.

IMPACT WRENCH USAGE GUIDELINES

⚠ WARNING

- Nuts shall be tightened evenly by alternating sides until metal-to-metal contact occurs at the bolt pads.
- **DO NOT** continue to tighten the nuts after the visual installation guidelines for the coupling, described in steps 7 – 8 on this page, are achieved.

Failure to follow these instructions could cause gasket pinching and coupling damage, resulting in death or serious personal injury and property damage.

Impact wrenches do not provide the installer with direct "wrench feel" or torque to judge nut tightness. Since some impact wrenches are capable of high output, it is important to develop a familiarity with the impact wrench to avoid damaging or fracturing the bolts or the coupling's bolt pads during installation. **DO NOT continue to tighten the nuts after the visual installation guidelines for the coupling, described in steps 7 – 8 on this page, are achieved.**

If the battery is drained or if the impact wrench is under-powered, a new impact wrench or a new battery pack shall be used to ensure that the visual installation guidelines for the coupling, described in steps 7 – 8 on this page, are achieved.

Perform trial assemblies with the impact wrench and check the assemblies with socket or torque wrenches to help determine the capability of the impact wrench. Using the same method, periodically check additional nuts throughout the system installation.

For safe and proper use of impact wrenches, always refer to the impact wrench manufacturer's operating instructions. In addition, verify that proper impact grade sockets are being used for coupling installation.

⚠ WARNING

Failure to follow instructions for tightening coupling hardware could result in:

- Personal injury or death
- Bolt fractures
- Damaged or broken bolt pads or coupling fractures
- Joint leakage