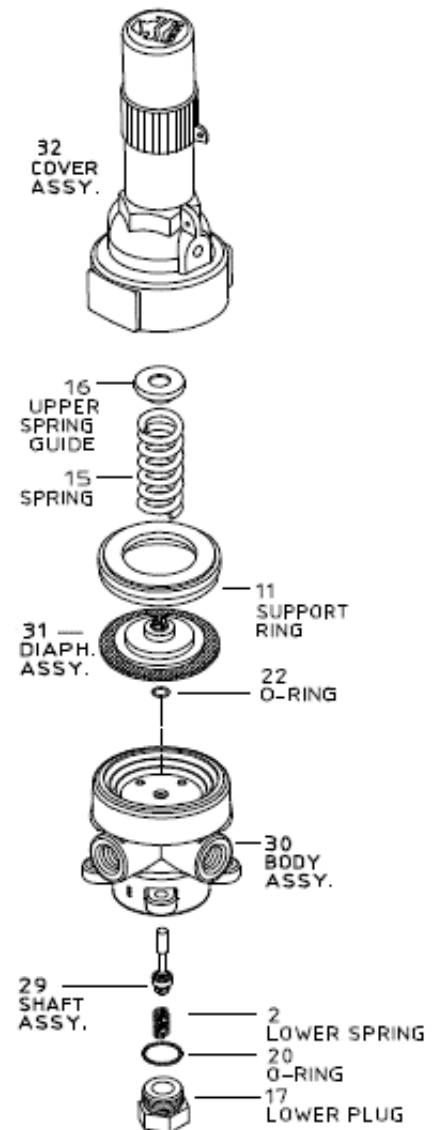


Bermad Pilot Parts and Maintenance

Pilot Model:	#2PB-WD-T-N-N
Description:	S.S 316 PRESSURE REDUCING PILOT, SPRING "T" (1-10 bar), COMPLY TO ALL DRINKING WATER STANDARDS
Bermad Part Number:	50041SP600
Victaulic part number:	P014972PIL
Sector:	BC, WW
Certification:	Potable Water - NSF 61; NSF 372

1. Parts List:

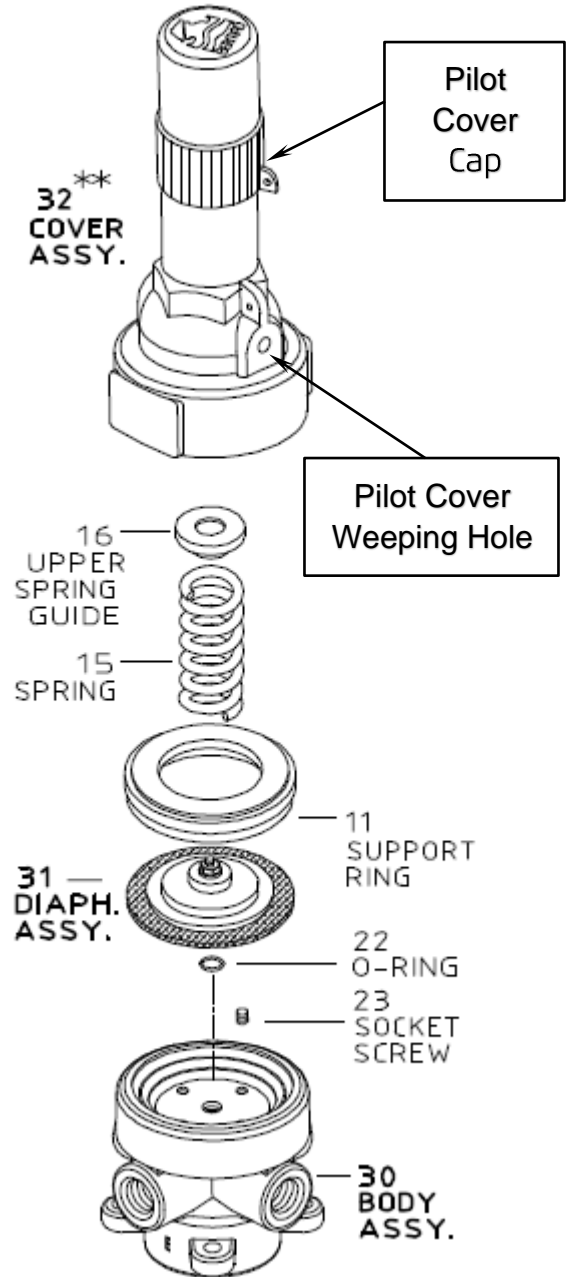
	Parts	Bermad Part #	Victaulic part #
	Repair kit (parts 31, 22, 29)	2200-E00PB-1	
32	Cover assembly	50041S1094	
16	Upper Spring Guide	52140S0023	
15	Spring "T" (standard), Red & Blue, 14.5-145 psi	5008LS1115	
15	Spring "W" (optional), Red & White, 14.5-232 psi	5004PSPB15	
11	Support Ring	5008L51113	
31	Diaphragm assembly	5004AS6193	
30	Body assembly (parts 22, 29, 2, 20 & 17)	50041SP290	
22	O-ring (2-010)	0517372665	
29	Shaft assembly	50041SP291	
2	Lower spring	50041SPB02	
20	O-ring (2-119)	0526376310	
17	Lower plug	50041SPB17	



2. Replacing the diaphragm assembly

- Water leak from the pilot cover weeping hole is an indication of a damaged pilot diaphragm.

1. Close the main line isolating valves at valves upstream and downstream.
2. Close the control circuit ball valves at valves upstream and downstream.
3. Make sure that the valve is not under pressure by loosening tube fittings in both sides of the pilot allowing water to drip out. Do not proceed before the system is depressurized!
4. Remove pilot cover cap.
5. Release the pilot set screw lock nut.
6. Release spring tension by turning the pilot set screw counter clockwise.
7. Remove the pilot cover by turning it counter clockwise using a large crescent wrench.
8. Remove the spring, upper spring guide, support ring and diaphragm assembly.
9. Place the new diaphragm assembly, the support ring, the spring and the upper spring guide back in place.
10. Replace the pilot cover and tighten.
11. Open all isolating valves.
12. Readjust the pilot settings.



3. Replacing the Diaphragm Assembly, Shaft Assembly and a Body O-ring

1. Close the main line isolating valves at valves upstream and downstream.
2. Close the control circuit ball valves at valves upstream and downstream.
3. Make sure that the valve is not under pressure by loosening tube fittings in both sides of the pilot allowing water to drip out. Do not proceed before the system is depressurized!
4. Remove pilot cover cap.
5. Release the pilot set screw lock nut.
6. Release spring tension by turning the pilot set screw counter clockwise.
7. Remove the pilot cover by turning it counter clockwise using a large crescent wrench.
8. Remove the upper spring guide, spring, support ring and diaphragm assembly.
9. Using a sharp pick remove the old O-ring (22) from the body.
10. Remove the lower plug and lower spring.
11. Using a plier pull the shaft assembly out.
12. Check the pilot body for debris or scales.
13. Apply silicon grease on the shaft and the O-ring.
14. Insert the shaft assembly until it reaches the O-ring groove.
15. Push the O-ring into the groove in the body.
16. Replace the lower spring and lower plug and tighten.
17. Place the diaphragm assembly, the support ring, the spring and the upper spring guide back in place.
18. Replace the pilot cover and tighten.
19. Open all isolating valves.
- 20.** Readjust the pilot settings

