

DEFINING INNOVATION FOR FIRE PROTECTION



COMMITTED TO CHANGING THE GAME SINCE 1919



DEFINING INNOVATION

TABLE OF CONTENTS

- 2 Victaulic® Series UMC, Series UM and Series 775
- 4 FireLock NXT™ Automatic Valve Systems
- 6 FireLock™ IGS™ Installation-Ready™ Sprinklers
- 8 Specific Application Attic Sprinklers
- 10 VicFlex™ Sprinkler Fitting Systems
- 12 VicFlex™ Bracket Solutions
- 14 VicFlex™ Series VS1 Dry Sprinkler
- 16 VicFlex™ Series VS2 Standard Coverage Sprinkler
- 18 VicFlex™ Style AB6 Bracket for Cold Storage
- 20 Victaulic® Cold Storage Solutions
- 22 FireLock™ IGS™
- 24 Grooving Innovations
- 26 FireLock™ Installation-Ready™ Couplings
- 28 FireLock™ Installation-Ready™ Fittings
- 30 Hydraulic Control Solutions
- 32 FireLock™ Fire-Pac Valve Cabinets
- 34 Victaulic Vortex™ Hybrid Fire Extinguishing System
- 36 Victaulic® System Solution for HDPE Pipe
- 38 Industrial Solutions
- 40 Victaulic Toolbar for Revit®
- 42 Defining Innovation Since 1919



since 1919

Since the first patent in 1919, Victaulic has delivered innovative pipe joining solutions that help customers succeed worldwide. Look inside many of the world's most recognizable landmarks and industrial facilities, and you'll find Victaulic solutions at work making bold design innovations possible, speeding time to completion, allowing for unpredictable seismic movements and setting the stage for scalability.

As the world's leading producer of grooved mechanical pipe joining systems, Victaulic continues to deliver ground breaking solutions for the fire protection industry.

SERIES UMC

UNIVERSAL MANIFOLD CHECK ASSEMBLY

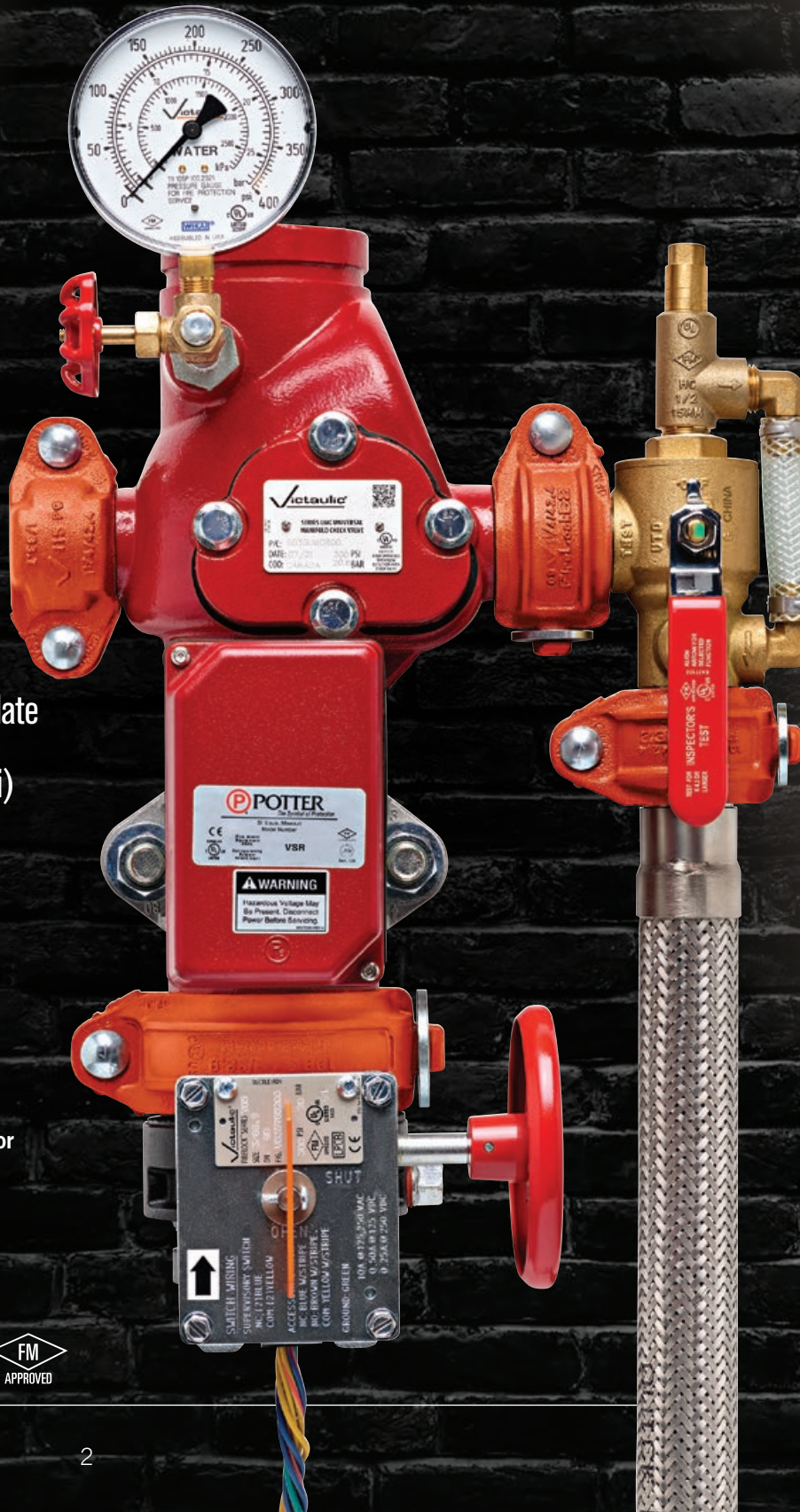
THE SINGLE
ASSEMBLY
THAT CHECKS
EVERY BOX.

- ✓ Control Valve
- ✓ Flow Switch
- ✓ Test & Drain
- ✓ Check Valve with Removable Cover Plate
- ✓ Adjustable Relief Valve (175 – 310 psi)
- ✓ Required System Gauge(s)
- ✓ Flexible Drain Hose

The compact design of the Series UMC saves valuable space in tight-quarter installations such as hallways, stairwell landings and alcoves. Available in left- and right-handed orientations for both floor control and shotgun riser assemblies.



Scan code
to learn more



SERIES 775 BUTTERFLY VALVE WALL POST INDICATOR ASSEMBLY

- Available Sizes
2-4" | 6-8" | 10-12"
- 85% lighter than traditional wall post indicators, allowing for one-person installation
- Comes with preset visual indicators – No disassembly required
- Extendable tube for easy adjustments, eliminating the need for precision field cutting of steel tube
- No additional cost to purchase or install a tamper switch



Scan code
to learn more



SERIES UM UNIVERSAL MANIFOLD ASSEMBLY

Universal manifold assembly incorporating a flow switch, test drain, system pressure gauge and pressure relief valve.

- Optional control valve
- Sizes from 1¼-8" | DN32-DN200
- Pressures up to 300 psi | 2068 kPa | 21 bar



Scan code
to learn more



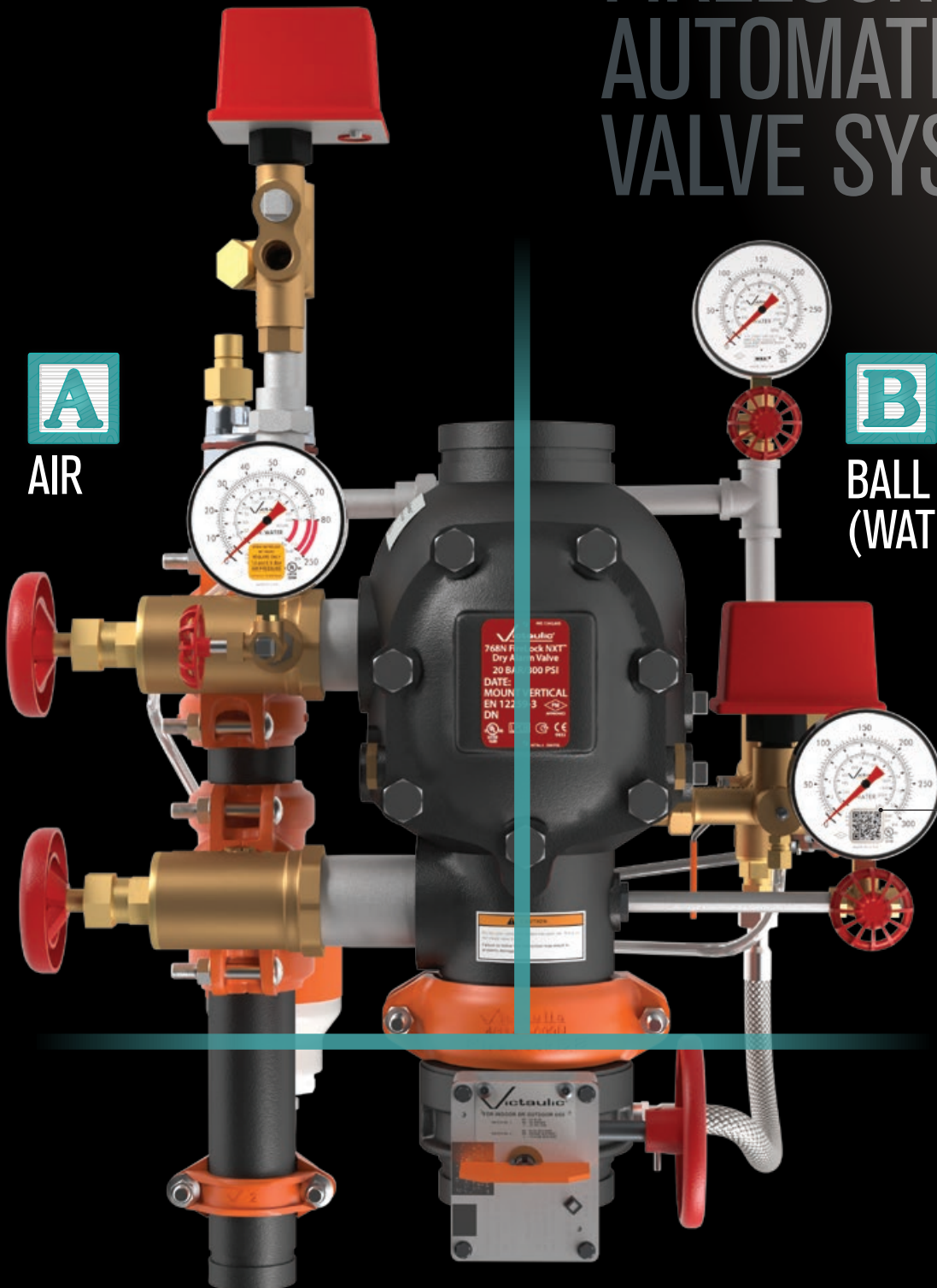
FIRELOCK NXT™ AUTOMATIC VALVE SYSTEMS



AIR



BALL VALVE
(WATER)



CONTROL VALVE

STREAMLINED SET-UP. AS EASY AS

LEFT EQUALS AIR.
RIGHT EQUALS WATER.
NO CONFUSION.



Simplified Maintenance

REFERENCE MATERIAL AT YOUR FINGERTIPS

First of its kind in the industry, instantaneously access up-to-date instructions directly from your mobile device. A quick scan is between you and installation, set-up and maintenance videos, or a call to Victaulic Customer Service.

EVERYTHING DESIGNED WITH YOU IN MIND

Reorganized installation instructions are clear and direct. Never mix-up a strainer again, specifically designed threads only fit in their specific manifold.

READILY ACCESSIBLE TRIM

All trim components are located on either side of the valve, and labeled clearly. No more reaching, or guesswork.



Series 768N

- Dry Valve



Series 769N

- Deluge Electric
- Deluge Dry Pilot
- Deluge Wet Pilot



Series 769N

- Preaction Electric
- Preaction Single Interlock Pneumatic
- Preaction Non-Interlock Pneumatic
- Preaction Double Interlock Pneumatic/Electric
- Preaction Double Interlock Pneumatic

INSTALLATION-READY™ SPRINKLERS

FOR STORAGE FACILITIES AND EXPOSED APPLICATIONS



“REALISTICALLY YOU DON’T HAVE TO PREP ANYMORE, IT COMES IN A BOX AND YOU JUST START INSTALLING IT ON THE PIPE”

Purchasing Agent

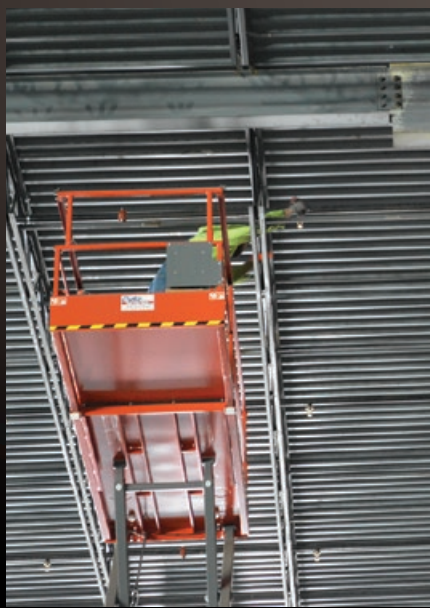


Scan to view our
full sprinkler offering



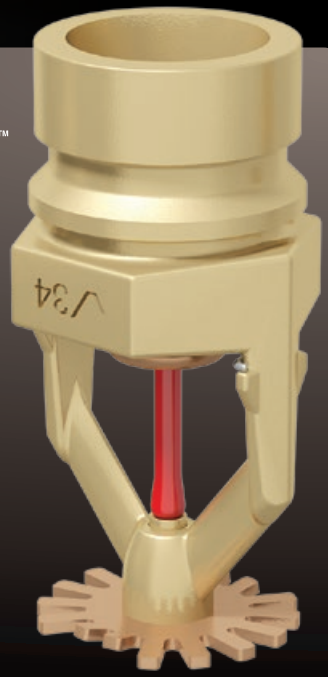
- Zero sprinkler prep
eliminate tape and dope
- Eliminate sprinkler wrenches
reducing injury from repeated strenuous motion
- Visual inspection of proper installation
no additional torque for frame alignment
- Standardize on 1" FireLock™ IGS™ outlets
coupling transitions to 1", ¾", and ½" sprinklers

Style V9 Sprinkler Coupling



STAY IN THE AIR, STAY PRODUCTIVE

Victaulic now offers solutions that eliminate prep work on the ground and keep installers in the air. But initial installation isn't the only thing that determines productivity, it's the rework required as well. Utilizing mechanical connections where possible instead of threaded connections ensures less downtime from leaks.



SPECIFIC APPLICATION ATTIC PROTECTION

Victaulic now offers Back-to-Back and Low Flow attic protection schemes for designers facing inevitable water supply challenges.

Victaulic’s Low Flow scheme utilizing Series FL-SA/RE and FL-SA/DS sprinklers is designed for moderate to less than moderate water supplies, while providing tested and effective protection of the attic. When water supplies are better than moderate, Victaulic offers a Back-to-Back scheme utilizing Series FL-SA/BB type sprinklers, resulting in reduced piping and significant labor savings.

Scan to view our full sprinkler offering
Specific Application › Attic



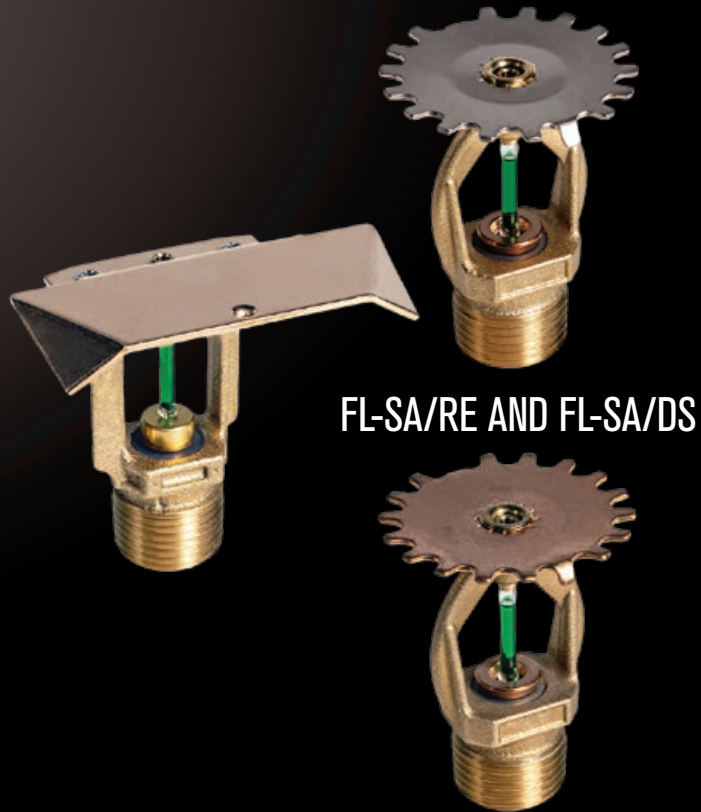
WATER SUPPLY REQUIREMENTS PER ATTIC SCHEME

System Type	NFPA: STANDARD SPRAY	BACK-TO-BACK SCHEMES	LOW FLOW SCHEME
Dry System	300–500+ gpm**	340–400 gpm	120–140+ gpm
Wet System	150–250 gpm	250–300 gpm	100–120+ gpm

Anticipated system demands consider non-maximum sprinkler spacing due to construction and estimated over-discharge of piping system.

LOW FLOW SCHEME

- Protect your attic using up to 70% less water
- Improve performance and decrease material and labor costs
- Optimize sprinkler activation and dramatically reduce the total number of sprinklers required
- Use less water, smaller pipe diameter, smaller dry valves
- Decrease total system demand and cost



FL-SA/RE AND FL-SA/DS

BACK-TO-BACK SCHEME

- Fills the gap between the traditional NFPA 13 system and the Victaulic Low Flow Protection scheme
- May allow for the protection of the entire span of the attic with one branchline
- Saves on labor and simplifies installation
- Requires considerably less water than the traditional NFPA 13 attic sprinkler system



FL-SA/BB



SPRINKLER FITTING SYSTEMS

CONFIDENCE. SPEED. PERFORMANCE.



SERIES AH2-CC HOSE

- Innovative grooved branch line connection using a captured Style 108 coupling instead of a threaded union
- Bolt pad to bolt pad visual confirmation
- Same great performance as the Series AH2 hose



SERIES AH2 HOSE

- 2" bend radius — tightest in the industry
- Most allowable bends in the industry
- Up to 50% less friction loss than corrugated systems



SERIES GH1 FLEXIBLE FITTING

- Grooved-end braided hose that is FM Approved and UL Listed as a flexible fitting
- Quick & easy installation around obstacles or in tight spaces
- 1–4" diameter available

FLEXIBLE FITTINGS

SUSPENDED CEILING

HARD-LID CEILING

DRY APPLICATIONS

SPECIALTY APPLICATIONS

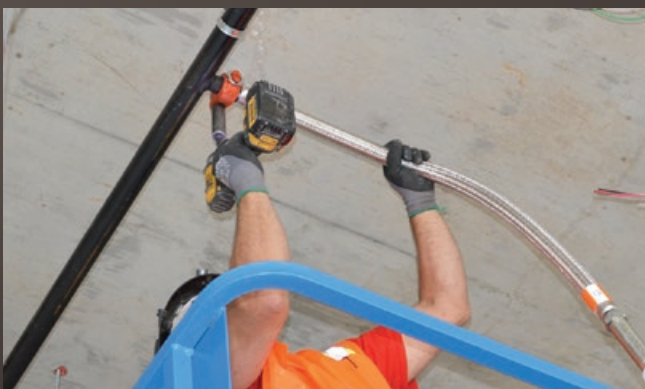
PRE-ASSEMBLED SYSTEMS



VicFlex™ is the clear choice for fast, dependable sprinkler installation.



Scan code to learn more about VicFlex solutions on the VicFlex App





SPRINKLER FITTING SYSTEMS



FLEX TO FIT YOUR NEEDS

Brackets for every solution from standard to specialized

FLEXIBLE FITTINGS

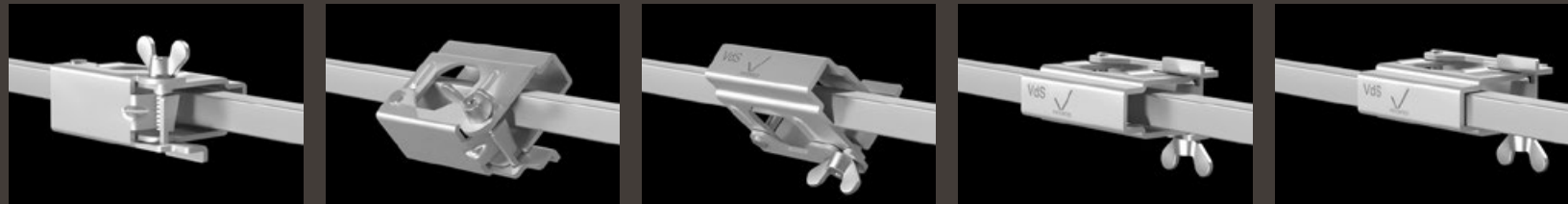
SUSPENDED CEILING

HARD-LID CEILING

DRY APPLICATIONS

SPECIALTY APPLICATIONS

PRE-ASSEMBLED SYSTEMS



STYLE AB2 WITH PATENTED, VERTICALLY-ADJUSTABLE OVER/UNDER CENTER BRACKET

- Allows installation and vertical adjustment from above or below the ceiling surface, without added steps of cutting into hard-lid material or creating an access point
- Eliminates the need to disassemble the bracket before installation
- Maintains reducer position while tightened
- Pad-to-pad visual confirmation for installation confidence



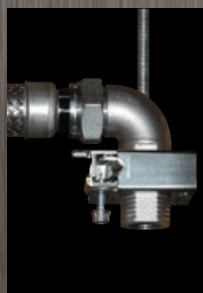
Scan code to learn more about VicFlex solutions on the VicFlex App

LOW PROFILE SOLUTIONS



STYLE AB11 BRACKET

- Installs in spaces with clearances down to 6" | 150 mm total takeout



STYLE AB12 BRACKET

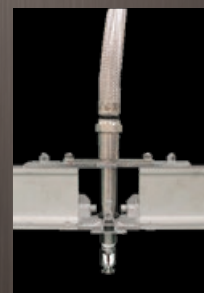
- Designed to work from 36" | 914 mm down to 4" | 100 mm clearance from face of ceiling

SPECIALTY APPLICATIONS



SERIES AQD

- FRP or Metal Duct Applications



SERIES AQD-U

- Clean Room Applications



SPRINKLER FITTING SYSTEMS

VICFLEX™ SERIES VS1 DRY SPRINKLER



Scan code to access the
dry sprinkler order form

FLEXIBLE FITTINGS

SUSPENDED CEILING

HARD-LID CEILING

DRY APPLICATIONS

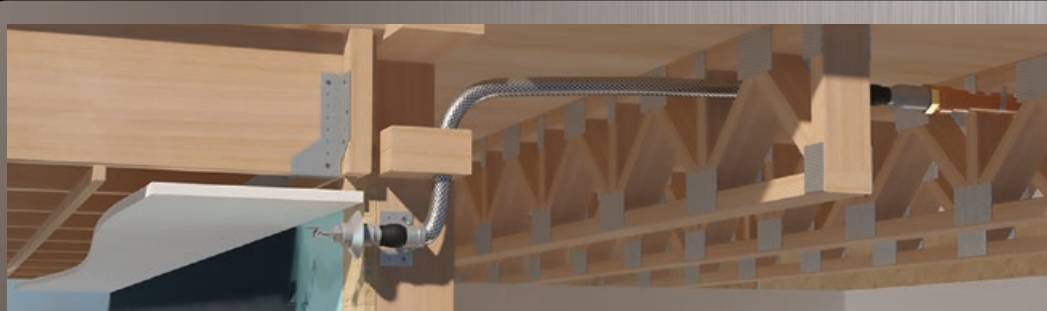
SPECIALTY APPLICATIONS

PRE-ASSEMBLED SYSTEMS

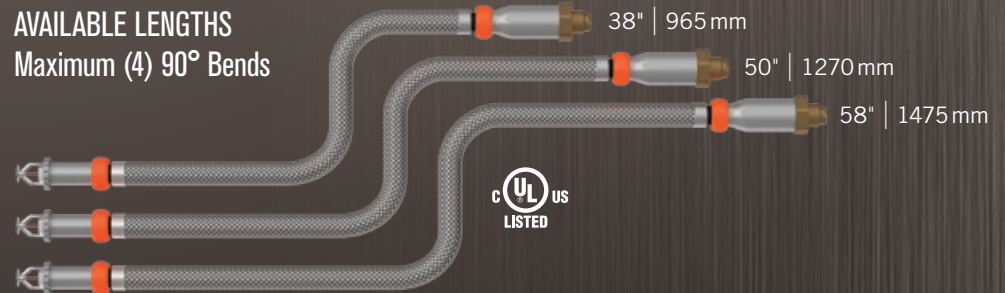


When flexible fitting technology meets dry sprinkler technology, the result is simpler and safer sprinkler systems from Victaulic.

- Applicable wherever dry sprinklers are currently installed such as — multi-family residential, balconies and breezeways, data centers, parking garages, assisted living facilities
- Meets NFPA 13 Installation Requirements for Dry Sprinklers
- 2" cULus bend radius



AVAILABLE LENGTHS
Maximum (4) 90° Bends





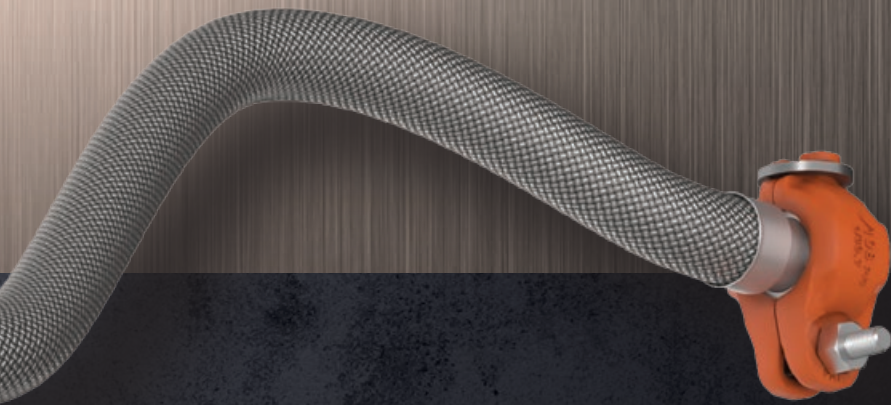
SPRINKLER FITTING SYSTEMS



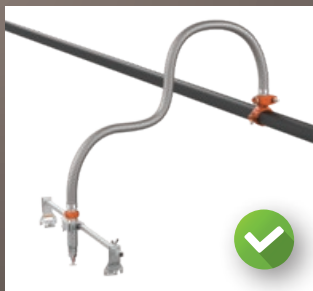
VICFLEX™ SERIES VS2 STANDARD COVERAGE SPRINKLER



Scan code to learn more
about VicFlex solutions
on the VicFlex App

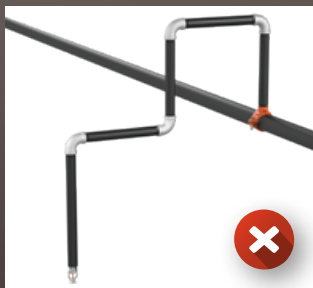


The only flexible, UL Listed K5.6 Standard Coverage sprinkler with no equivalent length calculations needed past the branch line.



SERIES VS2

- One assembly with one field connection
- No equivalent length of pipe to calculate
- Reduced pipe preparation and field work



HARD PIPE, ELBOWS, K5.6 SPRINKLER

- Multiple components and connection points
- Must calculate to account for frictional resistance of pipe and fittings
- Must measure, cut and thread hard pipe



SPRINKLER FITTING SYSTEMS

WORK SMARTER, NOT HARDER.



Sleeve and Skirt Pendant



Recessed Pendant



Flush Pendant

SUPERIOR COLD STORAGE PROTECTION

Victaulic offers an off-the-truck solution for cold storage applications that removes the guesswork of using hard pipe while also improving seal integrity. Whether it is a new project or a retrofit, using the VicFlex™ Style AB6 Bracket makes installation a one-person job and reduces the risk of condensation impeding the system.

FLEXIBLE FITTINGS

SUSPENDED CEILING

HARD-LID CEILING

DRY APPLICATIONS

SPECIALTY APPLICATIONS

PRE-ASSEMBLED SYSTEMS

VICFLEX™ STYLE AB6 BRACKET FOR COLD STORAGE



Scan code to access the
dry sprinkler order form

BENEFITS

- Simple, One-Person Installation. **Easy indication of vertical and frame arm alignment from above.**
- Eliminate Guesswork. **No measuring or multiple trips to the cooler.**
- Combats Differential Movement. **Industry leading seal integrity stays intact, protecting against condensation.**
- Flexible, Adjustable, and Adaptable. **Fits any ceiling or wall thickness while sealing to a variety of surfaces.**

COLD STORAGE SOLUTIONS

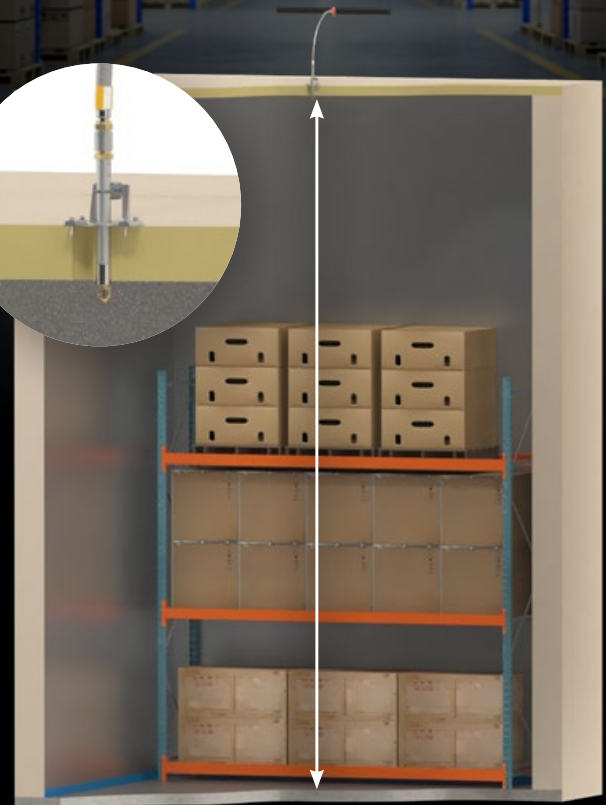
DELIVERING VERSATILITY AND VALUE

Up to 30' | 9.1 m

Up to 20' | 6.1 m



SERIES FL-QR/DRY
SERIES FL-SR/DRY
with Style AB6 Assembly
K5.6 | 8.1 or K8.0 | 11.5



SERIES FL-QR/DRY/ST
SERIES FL-SR/DRY/ST
with Style AB6 Assembly
K11.2 | 16.1

VERSATILITY

- Customized protection to fit every height – 45' | 13.7 m and under
- Configurable options to fit your specific needs:
 - Barrel length
 - Sprinkler type
 - Finish options
 - Connection type

VALUE

- Trusted Victaulic technology, including visual installation verification and a conforming rubber seal
- Increased efficiency on the job site with pre-assembled solutions and reduced joint connections



SERIES FL-QR/DRY/ESFR
with Style AB6 Assembly
K16.8 | 24.25



SERIES FL-SR/ST/CMSA
K25.2 | 36.8

1" SMALL DIAMETER



INNOVATIVE GROOVE SYSTEM **IGS™**

SIMPLIFY:

- Eliminate mess – no oil, shavings, tape, or dope
- Increase tool portability
- Use one pipe schedule (Schedule 10)

SAVE:

- Effort – eliminate pipe wrenches
- Up to 55% less pipe prep
- Up to 2x faster to install

CONFIRM:

- Replace threaded connections with mechanical joints
- Bolt pad to bolt pad visual confirmation
- No tool adjustment – groove within specification every time



Threading	versus	IGS™ Solutions
✘	No Oil, Shavings, Tape and Dope	✔
✘	For use with Sch. 40 – Sch. 10 pipe	✔
✘	Impact guns and no elbow injuries	✔
✘	Increased corrosion resistance	✔
✘	Minimize the potential for leaks	✔
✘	One-touch tool actuation	✔
✘	Visual Inspection – Improved system durability	✔
✘	Installs in minutes	✔



firelockIGS.com

GROOVING INNOVATIONS

RG3400 ROLL GROOVING TOOL

- Plug & Play Design — All necessary components included in one package
- Increased Productivity — Set the depth once and perform precise repeatable grooves
- Quiet Operation — Ideal for occupied spaces such as hospitals, schools and offices
- Grooving Capability
 - Carbon Steel/Stainless Steel: 1–12" OGS
 - Carbon Steel: 1" **IGS**[™]
 - Light Wall Stainless Steel: 2–12"
 - Copper: 2–8"
 - PVC: 2–8"
 - Aluminum: 2–12"



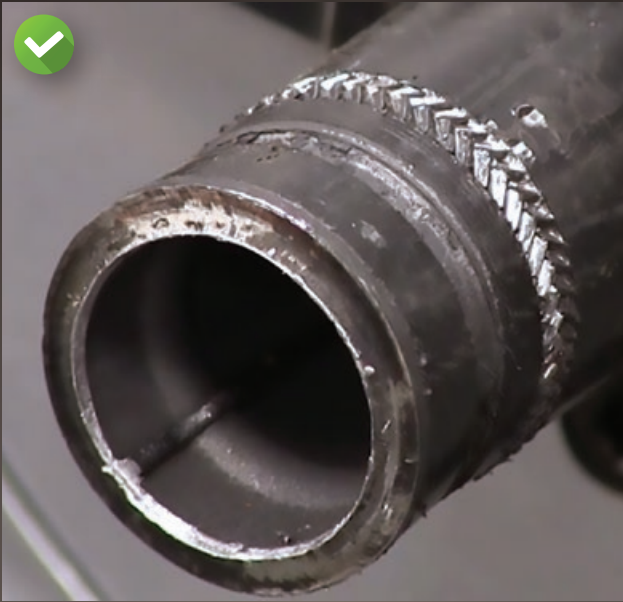
RG1 MANUAL ROLL GROOVING TOOL

- Cold forms the unique *Victaulic IGS* groove profile
- In-air hand grooving tool
- No power requirement
- Go/No-Go Groove Tape included with tool



RG2910 ROLL GROOVING TOOL

- 1" IGS™ groove profile



IGS™ ROLL GROOVING



seconds
per pipe end

THREADING



seconds
per pipe end

2x faster

FIRELOCK™ INSTALLATION-READY™ COUPLINGS

Installation-Ready™ from
1 – 12" | DN25 – DN300



STYLE 009N

FireLock™ Two-Bolt
Installation-Ready™
Rigid Coupling

1¼ – 12" | DN32 – DN300



STYLE 109

FireLock™ One-Bolt
Installation-Ready™
Rigid Coupling

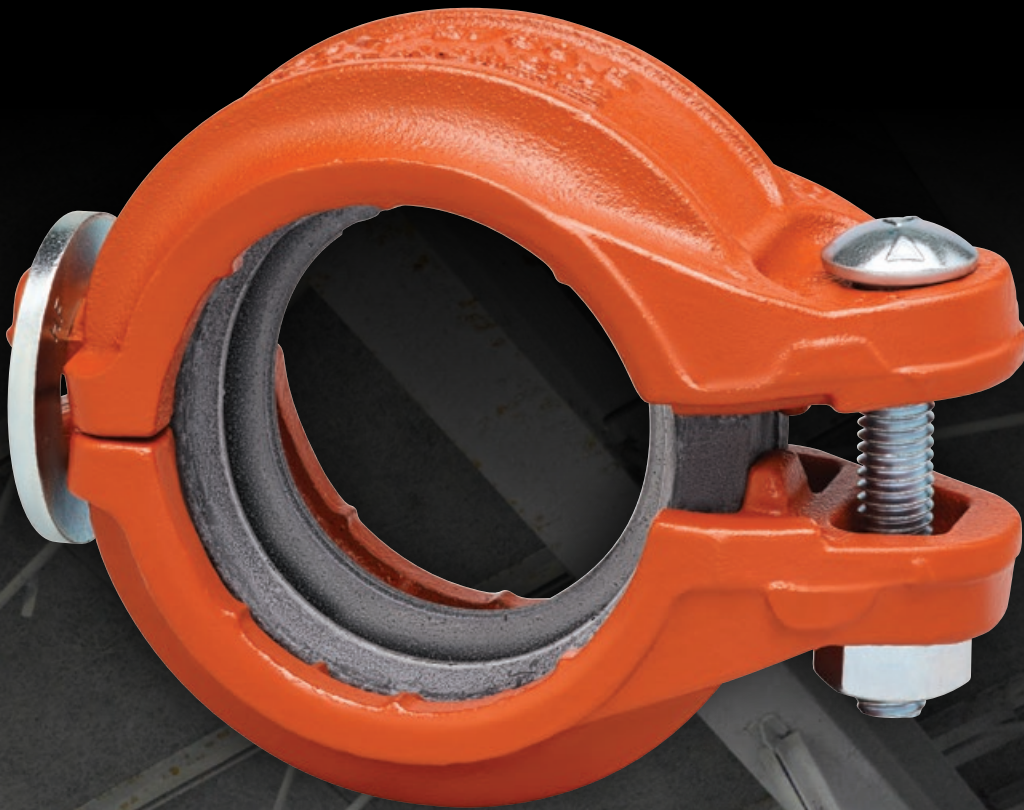
1¼ – 4" | DN32 – DN100



STYLE 108

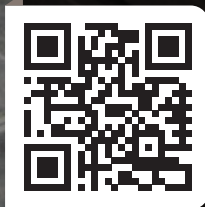
FireLock™ IGS™
Installation-Ready™
Coupling

1" | DN25



Style 109 FireLock™ **ONE-BOLT** Installation-Ready™ Coupling

- Added confidence of single pad to pad visual confirmation
- Still no torque requirement
- Up to 6 times faster to install than traditional couplings
- Easy fit-up overhead with a two-piece housing
- One-bolt design eliminates alternating during tightening



victaulic.com/style109



FIRELOCK™ INSTALLATION-READY™ FITTINGS

THE MOST INNOVATIVE CHANGE TO
FIRE PROTECTION FITTINGS SINCE VICTAULIC
ORIGINATED THE GROOVED CONCEPT.



firelockfittings.com



15 →
ready-to-install
fittings



260 →
loose parts



NO LOOSE PARTS

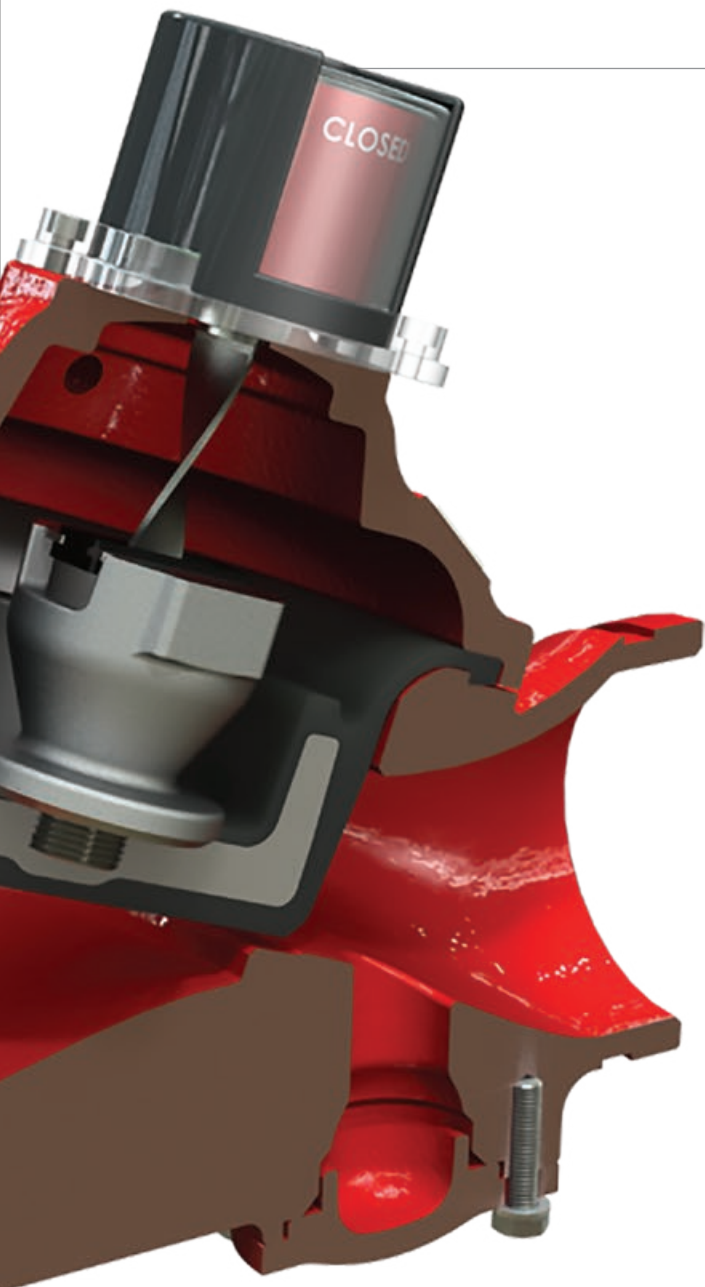
- Eliminate the time needed to look for an extra coupling or bolt
- Reduce the number of times up and down the ladder or lift

Through our exclusive partnership with BERMAD, Victaulic now offers innovative solutions for the control and management of fire protection systems specifically as it relates to water supply and pressure control.

Designing fire protection systems for high-rise and high-demand buildings presents a unique set of challenges, all of which can be addressed by leveraging BERMAD's product and technical expertise along with Victaulic's extensive system knowledge and support.

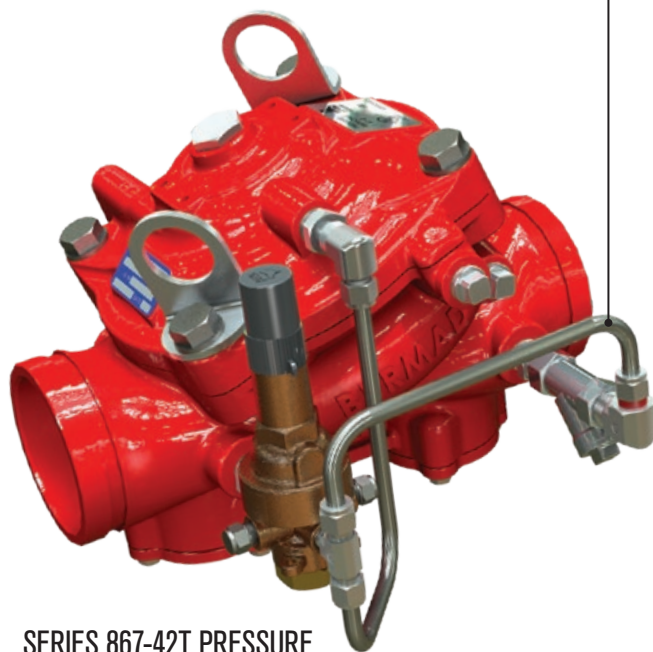


HYDRAULIC CONTROL SOLUTIONS



Adaptable Trim

Consistent valve body with multiple functions based on different trim configurations



SERIES 867-42T PRESSURE REDUCING VALVE

VICTAULIC® SERIES 800Y HYDRAULIC CONTROL VALVE FAMILY

Regardless of application, dependable operation and ease of service are important to your bottom line. Hydraulic control valves with improved flow capacity, decreased water hammer and simplified maintenance can increase operating life and reduce total cost of ownership for the fire protection system. Victaulic's advanced valve design does exactly that.

- Obstruction-free design increases flow capacity by up to 40% ($C_v =$ up to 3,801)
- No water hammer at closing — smooth, cushioned operation improves operating life and eliminates noise
- Highest cULus Listed and FM Approved pressure rating for pressure reducing and pressure relief applications — 365 psi | 2517 kPa | 25 bar
- Up to eight times faster, simplified maintenance due to rolling elastomeric diaphragm design and 4-bolt cover removal
- Industry-first and industry-leading flow stability without an anti-cavitation accessory required



Scan code
to learn more



MAXIMIZE BILLABLE SPACE



The **Series 745 Fire-Pac** is the ideal option for installation of Victaulic® FireLock NXT™ dry, deluge or preaction systems — especially when systems are:

- Located in high traffic areas
- Installed in series and share common supply and drain lines
- Designed in zoned control areas

HYBRID FIRE EXTINGUISHING SYSTEM

Victaulic Vortex™ hybrid technology, utilizing both water and nitrogen, extinguishes via heat absorption and oxygen dilution.



Scan code
to learn more



*Victaulic Vortex
Pre-Engineered
System*





VICTAULIC VORTEX™

- Water droplets are approximately 10 microns in size, with a heat-absorbing surface area 100 times greater than traditional sprinklers
- 100% green and sustainable
- Applicable for Class A, B and energized electronics fires such as data centers, turbine enclosures, “precious documents”, wet benches



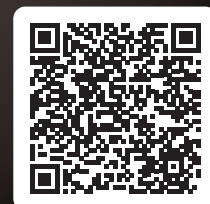
Victaulic Vortex™

Hybrid Fire Extinguishing System

The Standard for Hybrid Extinguishing Systems

NFPA 770

Seven years in the making, NFPA 770 made its official debut in 2020 as the Standard for Hybrid Fire Extinguishing Systems (water and inert gas).



Learn more about NFPA 770

SYSTEM SOLUTION FOR HDPE PIPE

THE FASTEST WAY TO JOIN HDPE PIPE –
NO IFS, ANDS, OR BUTTS.



Scan code to
learn more



DESIGNED TO BE BURIED



INSTALLS UP TO 10× FASTER

Join HDPE pipe in half the time it takes to fuse a joint. Forget the fusion equipment. Gone are the days of waiting for plastic to heat up just to cool down. Installing in tight or vertical spaces has never been easier; Victaulic's system solution for HDPE pipe goes where no fusion machine has gone before.



INSTALLATION IS WEATHER INDEPENDENT

Whether it's rain, shine, or just downright frigid and fierce, Victaulic® products for HDPE pipe can be installed. No need to check the weather forecast and worry about protection for fusion equipment or project delays any longer.



MEETS OR EXCEEDS PRESSURE RATINGS OF HDPE PIPE

Small diameter solutions call for dual rows of razor-sharp teeth that sink into the O.D. of HDPE pipe, forming a sealed hold that never lets go. Bringing out the big guns? Large diameter solutions enlist a rugged double groove to seal the deal. Push it, pull it, and drag it to the max; treat it the same way you would treat fused pipe.



INSTALLS WITH SIMPLE TOOLS

No need to set up a fusion machine. All you will need with Victaulic's system solution for HDPE pipe is a simple socket wrench. Want to add power? A cordless impact driver will get the job done even faster. No training certificates or no learning curve necessary.

INDUSTRIAL SOLUTIONS

CORROSION RESISTANT COATINGS



VC-250

Developed by Victaulic, the VC-250 is a proprietary UL/FM Approved, nickel based, multilayer corrosion resistant coating that fully encompasses each component of the sprinkler.

COATINGS

Victaulic provides a range of corrosion resistant solutions for life safety systems. Pictured here is a Style 009N coupling featuring Installation-Ready™ technology with an optional galvanized coating and stainless steel fasteners.



ENDSEAL™ COUPLING

For use on tank farms, fuel storage, and chemical facilities, the Gasket T607 used with the Victaulic *EndSeal* coupling has been tested and approved to the API607 standard.

The American Petroleum Institute Standard 607 provides test conditions used to evaluate materials exposed to the stringent conditions set forth by fire protection authorities in the protection of petroleum processing facilities.



DESIGNED FOR DURABILITY

FIRELOCK™ FIRE-PAC VALVE CABINETS

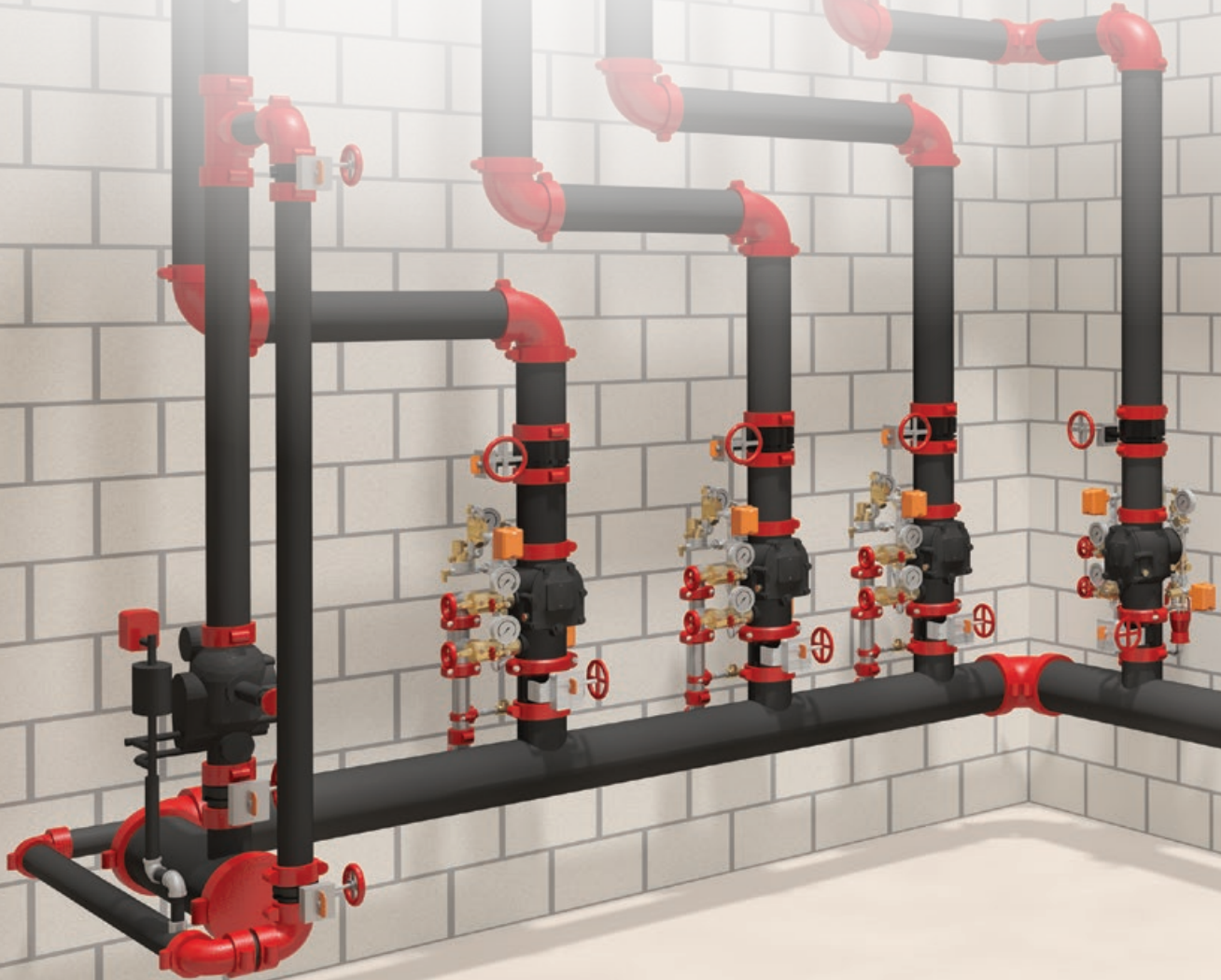
With more options available than ever before, each Fire-Pac System is completely unique.

- Weatherproofing to NEMA 4 standards
- Pipe feed and drain can be located on the left, right or bottom panels
- Insulation and heating components available down to a minimum ambient temperature of 20°F | -6°C
- Compressor and nitrogen fill kit options
- Panel design options now including an addressable panel capable of networking with other intelligent devices



VDC

VIRTUAL DESIGN & CONSTRUCTION



EARLY BILLS OF MATERIAL IN REVIT® ARE POSSIBLE

The procurement tool within Victaulic Tools for Revit® allows you to select an area within your model and easily create bills of material, including tags, part numbers, and finishes, eliminating the need for secondary software.

Victaulic Tools for Revit® provides an intuitive set of tools that are purposely built to improve pipe routing functionality in Autodesk Revit®. It's specifically designed to meet the needs of engineers and contractors – giving you smart tools to route piping accurately and efficiently.

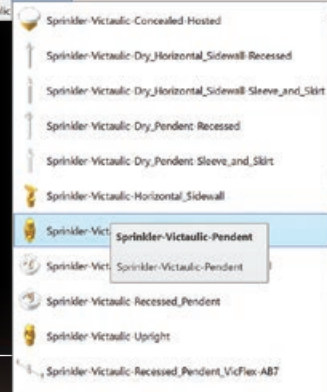


victaulicsoftware.com



VICTAULIC TOOLBAR FOR REVIT®

- Make edits to piping sections with a single click
- Calculate labor times within Revit®



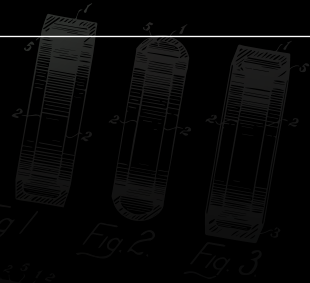
DEFINING INNOVATION *since* 1919

Since 1919, when Victaulic's first patent was filed, customers have relied on the company's commitment to quality and excellence. A century later, it's difficult to imagine a world without Victaulic. From the world's tallest building to its deepest mine, the company has evolved with a fierce determination to meet and surpass customer needs in the fields of building services, clean water and wastewater, fire protection, industrial construction, maritime, mining, oil, gas and chemical, and power generation.

Over the last 100 years Victaulic has solved the toughest challenges for its customers and set new standards for the industry.



A New York fireboat pumped water from the Hudson River through 1,000 ft | 305 m of 8" | DN200 of lightweight pipe that rookie fire crews had assembled with Victaulic couplings. In 1952, Underwriters' Laboratories (UL) approved Victaulic's couplings and fittings for use with fire protection systems.



1919

Grooved End Pipe Joining
Invented by Victaulic



1934

Victaulic® Flexible Couplings
Gain FM Approval for Use
in Earthquake Areas



1957

Victaulic Introduces Roll Grooving
Method to the Fire Protection Industry



1964

Flush-Seal™ Gasket Developed
for Dry Systems



1972

Pioneered UL Listing for
Roll Grooving Lightwall Pipe



1975

First Mechanical Tee for Branch
Connections Style 920

Introduced *Vic-Check*
Check Valve



1986

First Rubber Coated Butterfly
Valve for Fire Protection



Grooved End Pipe Joining
Introduced in the U.S.

1925



First Grooved End Coupling
to Achieve UL Listing

1952



Introduced First Production Roll Groover

1962



First Outlet Coupling Introduced
First Direct Flange-to-Groove Adapter

1969



First Reducing On-The-Run
Coupling Style 750

1974



Introduced FIT: First
Locking Lug System
Vic-Tap: First Full Port
Hot Tapping Device
with UL Listing

1978

continued

1990

FireLock™ Fittings: First Full-flow, Short-radius Fittings Designed for the Fire Protection Industry



1999

Introduced Victaulic® FireLock™ Sprinklers and Accessories



2005

FireLock EZ™: First Rigid Coupling with Installation-Ready™ Technology

FireLock NXT™ Check Valve Systems



2011

VicFlex™ Series AH2 Braided Hose and Style AB1 Bracket



2013

FireLock™ ECLH Sprinkler Model V31

VicFlex™ Hard-lid Ceiling Bracket Style AB2



2015

FireLock NXT™ Devices Style 768N

Joint Venture with BERMAD™ Hydraulic Control Valves

EndSeal™ Couplings with API607 Approved Gasket



FireLock™ Style 005 Rigid Coupling

FireLock™ Butterfly Valve Series 707: the First Valve Pre-wired and Tested for Panel Connectivity

1988



FireLock™ Check Valve Series 717:

First Extended Body Swing/Check Design

Enhanced Tracking Roll Sets for "Hands Off" Grooving

1994



FireLock NXT™ Devices Introduced

2004



Victaulic Vortex™ Hybrid Fire Extinguishing System Gains FM Approval CL-5580 for Use in Machine Spaces

2009



FireLock EZ™ Style 009N Installation-Ready Coupling Introduced

Victaulic Vortex™ 500

2012



FireLock™ Fire-Pac Series 745

Style 009N Installation-Ready™ Coupling to 8" | 200 mm

Corrosion Resistance Coating for Sprinklers VC-250

VicFlex™ Flexible Drop Style AH1

2014

continued

Defining Innovation Since 1919

2016

- FireLock™ Fittings with Installation-Ready™ Technology
- VicFlex™ Flexible Dry Sprinkler
- FireLock NXT™ Series 769N Preaction/Deluge Check Valve

2017

- AH2-CC First Flexible Fitting Utilizing a Mechanical Connection to the Branchline
- FireLock™ IGS™ (Innovative Groove System)

2018

- Style 109 FireLock™ One-Bolt Installation-Ready™ Coupling
- Style V9 FireLock™ Installation-Ready™ Sprinkler Coupling

2019

- Vicflex™ Style AB6 Bracket for Cold Storage

2021

- Updated AB2 Bracket with Over/Under Center Bracket for versatility
- FireLock™ Sprinkler Offering Expanded with new digital tools

2022

- Victaulic® Series UMC Universal Manifold Check Assembly

2023

- Victaulic Vortex Hybrid Fire Extinguishing System Gains FM Approval for Use in Data Centers
- VicFlex Series VS2 Standard Coverage Sprinkler
- RG3400 Roll Grooving Tool

2024

- Series FL-QR/DRY/ESFR Sprinkler

Creating innovative solutions for the construction industry marks Victaulic's approach – an approach which we intend to maintain and commit to for the next 100 years. Innovation has always been Victaulic's hallmark, in turn producing elegant solutions. Victaulic's intellectual property, with more than 2,000 patents granted, is the largest in the mechanical pipe joining industry. A crucial differentiator for Victaulic, inventing and applying technologies that exceed customer and industry expectations will drive future growth. Victaulic, the world leader in grooved mechanical pipe joining systems, has shaped the course of history.

Easy search. Easy choice.



FIRELOCK AUTOMATIC SPRINKLERS

STANDARD COVERAGE
EXTENDED COVERAGE
RESIDENTIAL
STORAGE
DRY
SPECIFIC APPLICATION

		QUICK RESPONSE				STANDARD RESPONSE				
PUBLICATION	SERIES	OPERATION	K-FACTOR (IMP. / S.T.)	SN NUMBER	CONNECTION TYPE	TEMPERATURE RATING	APPROVALS	PREWIRED AND CONDUIT OPTIONS	MAX. PRESSURE	REVISIONS
					NPTA, NPT, 1/2" or 3/4" BSPT, 1/2" or 3/4" BSPP	(T, C)			PSI Bar	
#1.01	FL SR	Upright	5.8	V0811	%	155, 155, 175, 200, 240	UL-Listed	Main Brass, Chrome, White	175	V08 Open End
	FL SR	Upright	4.5	V0811	%	57, 58, 75, 93, 141	UL-Listed	Single White, Black, VC20, Conduit	152	V08 Open End
	FL SR	Upright	6.2	V0719	% K55 Conduit	155, 155, 175, 200, 240	UL-Listed	Main Brass, Chrome, White	175	V08 Open End
	FL SR	Upright	8.1	V0719	% K55 Conduit	57, 58, 75, 93, 141, 162	UL-Listed, LPCB	Single White, Black, VC20, Conduit	175	V08 Open End
	FL SR	Upright	8.8	V0719	% K55 Conduit	155, 155, 175, 200, 240, 260	UL-Listed, PAB	Main Brass, Chrome, White	175	V08 Open End
	FL SR	Upright	11.0	V0811	20' K55 Conduit	57, 58, 75, 93, 141, 162	UL-Listed, LPCB, NFPA 12	Single White, Black, VC20, Conduit	152	V08 Open End
	FL SR	Residential and Reduced Pressure	2.8	V0811	%	155, 155, 175, 200, 240	UL-Listed	Main Brass, Chrome, White	152	V08 Open End
	FL SR	Residential and Reduced Pressure	4.0	V0811	%	57, 58, 75, 93, 141	UL-Listed	Single White, Black, VC20, Conduit	152	V08 Open End
	FL SR	Residential and Reduced Pressure	6.2	V0719	%	155, 155, 175, 200, 240	UL-Listed	Main Brass, Chrome, White	175	V08 Open End
	FL SR	Residential and Reduced Pressure	8.1	V0719	% K55 Conduit	57, 58, 75, 93, 141, 162	UL-Listed, LPCB	Single White, Black, VC20, Conduit	175	V08 Open End
	FL SR	Residential and Reduced Pressure	8.8	V0719	% K55 Conduit	155, 155, 175, 200, 240, 260	UL-Listed	Main Brass, Chrome, White	175	V08 Open End
	FL SR	Residential and Reduced Pressure	11.0	V0811	20' K55 Conduit	57, 58, 75, 93, 141, 162	UL-Listed, PAB	Single White, Black, VC20, Conduit	152	V08 Open End
#1.02	FL SR SR	Residential and Reduced Pressure	2.8	V0870	%	155, 155, 175, 200, 240, 260	UL-Listed	Main Brass, Chrome, White	175	V08 Open End
	FL SR SR	Residential and Reduced Pressure	4.2	V0870	%	57, 58, 75, 93, 141, 162	UL-Listed	Single White, Black, VC20, Conduit	152	V08 Open End
	FL SR SR	Residential and Reduced Pressure	6.2	V0719	% K55 Conduit	155, 155, 175, 200, 240, 260	UL-Listed	Main Brass, Chrome, White	175	V08 Open End
	FL SR SR	Residential and Reduced Pressure	8.1	V0719	% K55 Conduit	57, 58, 75, 93, 141, 162	UL-Listed, PAB	Single White, Black, VC20, Conduit	152	V08 Open End
	FL SR SR	Residential and Reduced Pressure	8.8	V0811	% K55 Conduit	155, 155, 175, 200, 240, 260	UL-Listed, LPCB	Main Brass, Chrome, White	175	V08 Open End
	FL SR SR	Residential and Reduced Pressure	11.0	V0811	20' K55 Conduit	57, 58, 75, 93, 141, 162	UL-Listed	Single White, Black, VC20, Conduit	152	V08 Open End
	FL SR SR	Conventional Pendant	5.8	V0811	%	155, 155, 175, 200	UL-Listed	Main Brass, Chrome, White	175	V08 Conduit
	FL SR SR	Conventional Pendant	5.8	V0811	%	57, 58, 75, 93	UL-Listed, PAB	Single White, Black, VC20, Conduit	152	V08 Conduit
	FL SR SR	Conventional Pendant	8.1	V0811	%	155, 155, 175, 200	UL-Listed	Main Brass, Chrome, White	175	V08 Conduit
	FL SR SR	Conventional Pendant	8.1	V0811	%	57, 58, 75, 93	UL-Listed, LPCB	Single White, Black, VC20, Conduit	152	V08 Conduit
	FL SR SR	Conventional	5.8	V0713	%	155, 155, 175, 200, 240, 260	UL-Listed, LPCB	Main Brass, Chrome, White	175	V08 Open End
	FL SR SR	Conventional	8.1	V0713	%	57, 58, 75, 93, 141, 162	UL-Listed	Single White, Black, VC20, Conduit	152	V08 Open End
#1.04	FL SR SR	Conventional	5.8	V0713	%	155, 155, 175, 200, 240, 260	UL-Listed	Main Brass, VC20	175	V08 Open End
	FL SR SR	Conventional	8.1	V0713	%	57, 58, 75, 93, 141, 162	UL-Listed, PAB	Single White, Black, VC20, Conduit	152	V08 Open End



Quickly find the sprinklers you need for your next project with our interactive sprinkler chart and enhanced catalog and search functionality. Featuring intuitive filters and more information with less clicks, the interactive sprinkler chart simplifies your search.

victaulic.com



PB-400 9317 REV L 06/2024
 Victaulic and all other Victaulic marks are the trademarks or registered trademarks of Victaulic Company, and/or its affiliated entities, in the U.S. and/or other countries. All other trademarks listed herein are the property of their respective holders, in the U.S. and/or other countries. The terms "Patented" or "Patent Pending" refer to design or utility patents or patent applications for articles and/or methods of use in the United States and/or other countries.
 © 2024 VICTAULIC COMPANY. ALL RIGHTS RESERVED.

