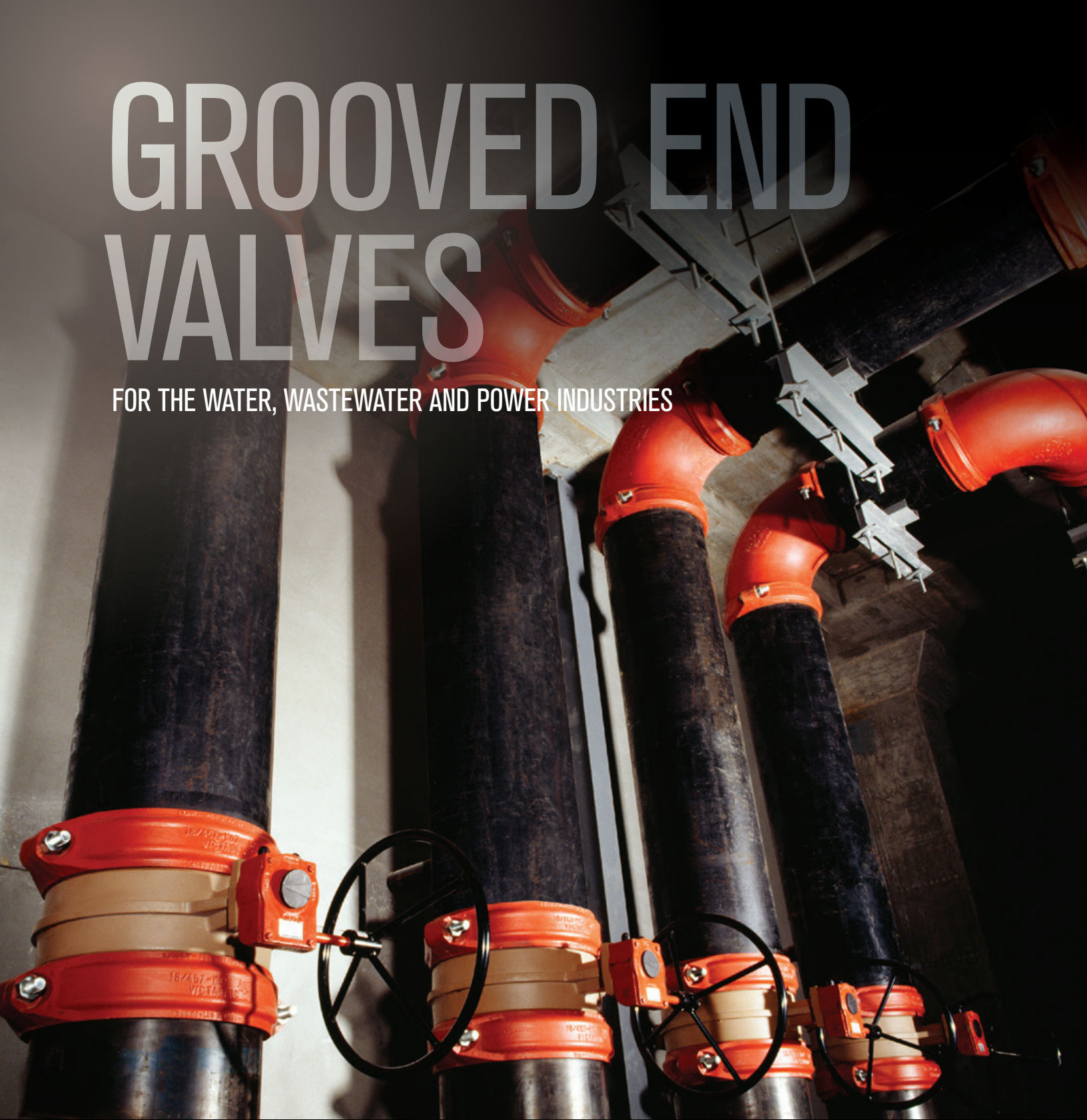


# GROOVED END VALVES

FOR THE WATER, WASTEWATER AND POWER INDUSTRIES



THE WORLD LEADER IN PIPE JOINING SOLUTIONS





# THE WORLD LEADER IN PIPE JOINING AND FLOW CONTROL



Since 1919, Victaulic has led the industry by developing innovative pipe joining solutions that improve safety, reduce risk and compress schedules; delivering real value to the owners, engineers, contractors and maintenance personnel who have come to depend on them. Whether you're planning your next maintenance outage or specifying your next facility, Victaulic ingenuity and experience can protect your bottom line.

## GLOBALY ACCEPTED

The American Society of Mechanical Engineers (ASME) established the B31 Pressure Piping Code Committees to promote safety in pressure piping design and construction around the globe through published engineering criteria.

Victaulic standard IPS couplings and grooved fittings may be utilized on ASME B31.1 Power Piping Code and ASME B31.3 Process Piping applications within their published temperature and pressure parameters and are manufactured from ductile iron that conforms to ASTM A-536 and ASTM A-395 specifications. They also meet the requirements of ANSI/AWWA C-606 for use on grooved end fittings and pipe grooved in accordance with this standard.

For more information regarding the conformance of IPS grooved couplings and fittings to ASME B31.1 Power Piping Code, request publication 26.06, and ASME B31.3 Process Piping, request publication 26.11.

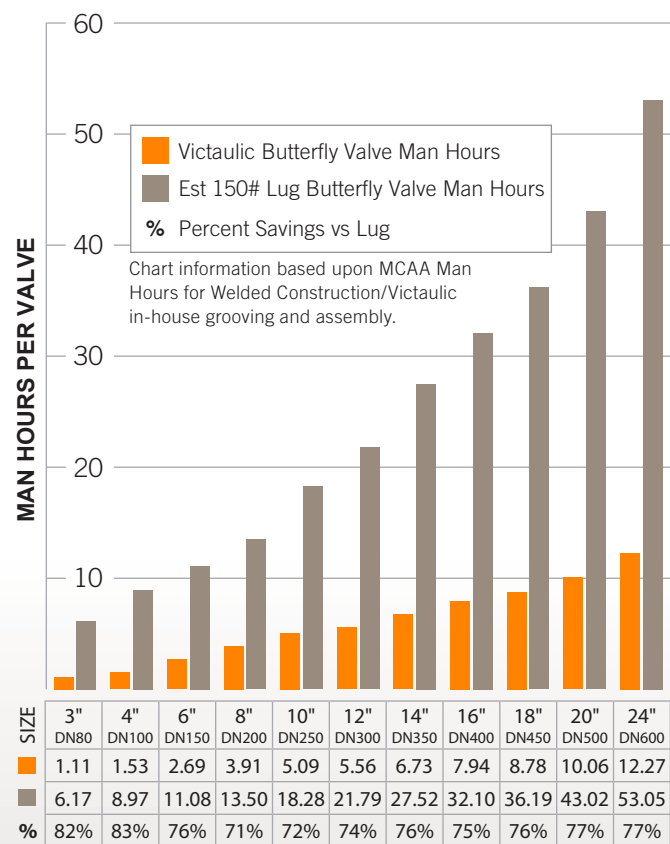




# GROOVED END VALVES

FOR THE WATER, WASTEWATER AND POWER INDUSTRIES

## Man Hours Comparison



## Shorten construction schedules

Unlike flanged valves, Victaulic grooved end valves can be installed as pre-fabricated pipe spools in the field. With grooved valves installing up to **3x faster than flanged connections.**



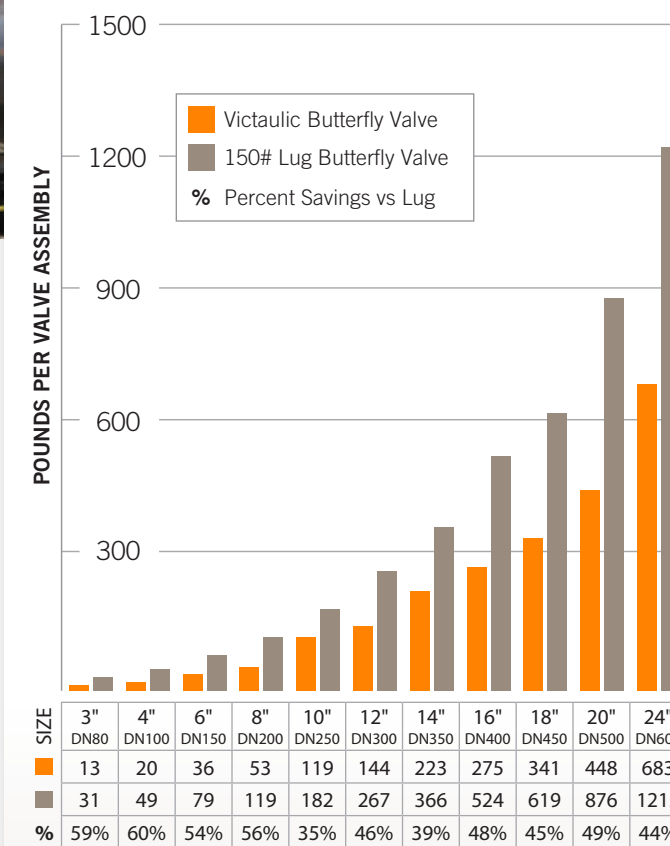
USING VICTAULIC BUTTERFLY VALVES CAN REDUCE THE SYSTEM WEIGHT BY UP TO **60%** AND REDUCE INSTALLATION TIME BY UP TO **83%**

All Victaulic butterfly valves provide bubble tight sealing so down stream maintenance is simplified.

## Weight savings and safety impact

Utilizing Victaulic butterfly valves **reduces the overall valve weight by 35%–60%**, while also minimizing the number of lifted and rigged loads. The table to the right compares the weight difference between grooved valves with couplings and lug valves with 150# weld neck flanges and cap screws.

## Weight Comparison

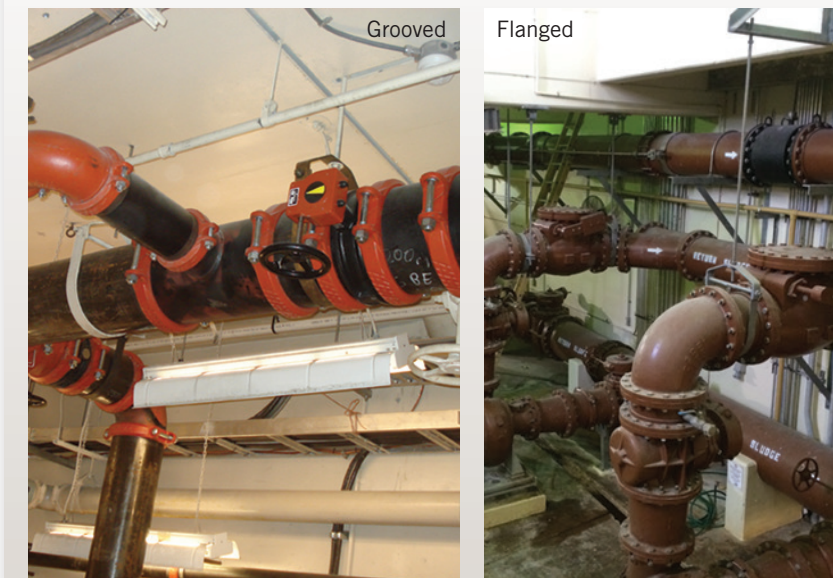


## Simplify maintenance

Victaulic couplings and valves provide a **union at every joint**, allowing easy access to the system and flexibility for future system expansion. Maintenance, repair and operations tasks such as cleaning strainers, mucking valves or pigging lines is more easily accomplished.

## Elimination of dismantling joints

Victaulic grooved end valves eliminate the need for dismantling joints, reducing the total number of joints necessary to run and maintain the system. This allows for a **reduction in system footprint and total installed cost.**







## Vic™-300 MasterSeal™ Butterfly Valve SERIES 761

[Download publication 08.20](#) for complete information

- Designed for bi-directional, dead end services to full working pressure
- Available without handle, with gear operator, with lever lock handle and memory stop or with 10-position handle and memory stop
- Sizes from 2–12" | DN50–DN300
- Pressures up to 300 psi | 2068 kPa | 21 bar

### Certifications/Listings:

[Download publication 02.06](#) for potable water approvals



## Butterfly Valve SERIES 700

[Download publication 08.05](#) for complete information

- Two piece stem permits narrow disc design for low pressure drop performance
- Supplied standard with aluminum bronze disc, 316 stainless steel optional
- Sizes from 1½–6" | DN40–DN150
- Pressures up to 200 psi | 1379 kPa | 14 bar



## AGS Vic™-300 Butterfly Valve SERIES W761

[Download publication 20.06](#) for complete information

- Offers an easily installed choice to cumbersome, multi-bolt wafer or lug-type flanged valves
- ½ the weight of a flanged valve
- Sizes from 14–24" | DN350–DN600
- Pressures up to 300 psi | 2068 kPa | 21 bar



## AGS Butterfly Valve SERIES W709

[Download publication 20.07](#) for complete information

- Offers an easily installed choice to cumbersome, multi-bolt wafer or lug-type flanged valves
- ½ the weight of a flanged valve
- Sizes from 26–48" | DN650–DN1200
- Pressures up to 150 psi | 1034 kPa | 10 bar



## AWWA Compliant C504 Butterfly Valve

SERIES 719 and SERIES W719

Contact Victaulic for publication

- ½ the weight of a flanged valve
- Sizes from 6–72" | DN150–DN1800
- AWWA Pressure Class 250B



## Vic™-300 MasterSeal™ Stainless Steel Butterfly Valve SERIES 461

[Download publication 17.40](#) for complete information

- Designed for bi-directional, dead end services to full working pressure
- Available without handle, with gear operator, with lever lock handle and memory stop or with 10-position handle and memory stop
- Sizes from 2–8" | DN50–DN200
- Pressures up to 300 psi | 2068 kPa | 21 bar

### Certifications/Listings:

[Download publication 02.06](#) for potable water approvals



## Butterfly Valve for Copper

SERIES 608N

[Download publication 22.14](#) for complete information

- Joins quickly to copper tube by utilizing Style 607 Installation-Ready™ couplings
- Sizes from 2½–6" | DN65–DN150
- Pressures up to 300 psi | 2068 kPa | 21 bar

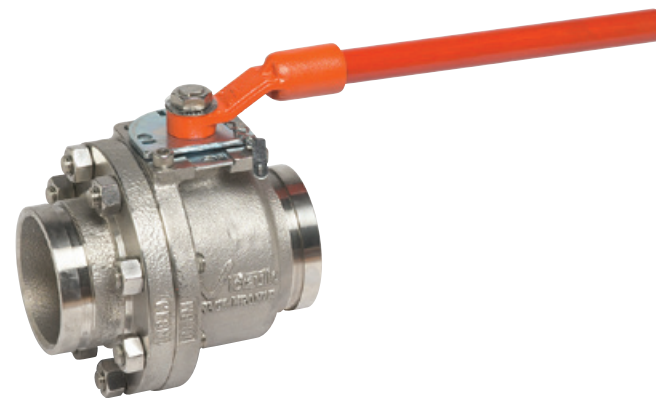


## Ball Valve

SERIES 727

[Download publication 08.42](#) for complete information

- High pressure enhanced port NACE-compliant ball valve
- Up to ⅓ better flow than competitive standard port ball valves
- Floating ball reduces torque requirements
- Sizes from 2–6" | DN50–DN150
- Pressure up to 1500 psi | 10342 kPa | 103 bar



## Vic-Ball Valve

SERIES 726S

[Download publication 17.22](#) for complete information

- High pressure Type 316 stainless steel standard port ball valve with grooved ends
- Sizes from 1½–6" | DN40–DN150
- Pressures up to 1000 psi | 6895 kPa | 69 bar

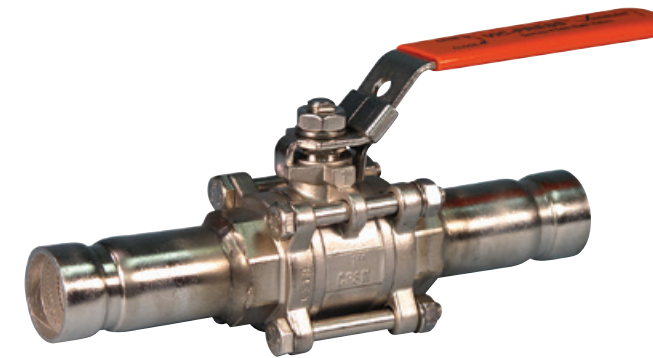


## Vic-Ball Valve

SERIES 726D

[Download publication 17.28](#) for complete information

- High pressure super duplex stainless steel standard port ball valve with grooved ends
- Sizes from 2–6" | DN50–DN150
- Pressures up to 1200 psi | 8274 kPa | 83 bar



## Three-Piece Vic-Press™ Ball Valve

SERIES P569

[Download publication 18.14](#) for complete information

- The three-piece swing-out design permits easy in-line maintenance
- Sizes from ½–2" | DN15–DN50
- Pressures up to 400 psi | 2758 kPa | 28 bar
- For the entire *Vic-Press* line of products, [download publication 18.11](#)





### Vic-Check Valve

SERIES 716H

[Download publication 08.08](#) for complete information

- Features a stainless steel disc which seats against the o-ring seal, when mounted on the electroless nickel plated face
- Sizes from 2–3" | DN50–DN80
- Pressures up to 365 psi | 2517 kPa | 25 bar



### Vic-Check Valve

SERIES 716

[Download publication 08.08](#) for complete information

- Features an elastomer encapsulated disc and a welded-in nickel seat
- Sizes from 4–12" | DN100–DN300
- Pressures up to 300 psi | 2068 kPa | 21 bar



### Venturi Check Valve

SERIES 779

[Download publication 08.10](#) for complete information

- Provides a variety of functions unlike any other measuring device
- Sizes from 4–14" | DN100–DN350
- Pressures up to 300 psi | 2068 kPa | 21 bar



### AGS Vic-Check Dual Disc Valve

STYLE W715

[Download publication 20.08](#) for complete information

- Utilizes a spring-assisted, dual disc design that achieves drop tight sealing
- Can be installed in both horizontal or vertical flow up positions
- Sizes from 14–24" | DN350–DN600
- Pressures up to 230 psi | 1586 kPa | 16 bar



### Check Valve for AWWA

SERIES 317

[Download publication 23.09](#) for complete information

- Conforms to AWWA C-508 requirements for water and wastewater treatment services
- Sizes from 3–12" | DN80–DN300
- Pressures up to 175 psi | 1207 kPa | 12 bar



### Double Disc Check Valve

SERIES 415

[Download publication 17.37](#) for complete information

- Features grooved ends for installation in either StrengThin™ Systems or OGS
- Sizes from 2–18" | DN50–DN450
- Pressures up to 1200 psi | 8274 kPa | 83 bar



## Swing Check Valve

SERIES 712

[Download publication 08.11](#) for complete information

- Designed for use with Victaulic® grooved fittings and couplings for fast installation on inlet and outlet ports
- Sizes from 2–4" | DN50–DN100
- Pressures up to 300 psi | 2068 kPa | 21 bar



## Swing Check Valve

SERIES 713

[Download publication 08.54](#) for complete information

- High pressure check valve designed for use with Victaulic grooved fittings and couplings for fast installation on inlet and outlet ports
- Sizes from 2–4" | DN50–DN100
- Pressures up to 1000 psi | 6895 kPa | 69 bar for 2" | DN50 and 750 psi | 5171 kPa | 52 bar for 2½–4" | DN65–DN100

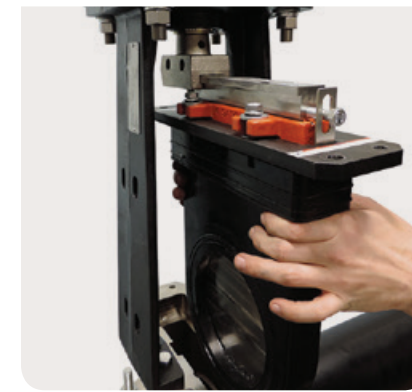


## Swing Check Valve

SERIES 712S

[Download publication 17.08](#) for complete information

- The large closure access bonnet permits easy access for in-line service
- Designed for use with standard Victaulic® grooved fittings and couplings for fast installation on inlet and outlet ports
- Available in size 2" | DN50



Scan for  
Installation  
Videos



## Knife Gate Valve

SERIES 795

[Download publication 08.25](#) for complete information

- The industry's first in-line maintenance knife gate valve
- Pneumatic, hydraulic and manual actuation available
- Sizes from 3–12" | DN80–DN300
- Pressures up to 150 psi | 1035 kPa | 10 bar



## Vic-Plug Valve

SERIES 377

[Download publication 08.12](#) for complete information

- Only eccentric grooved end plug valve made specifically for throttling services
- Available without handle, with lever operator or gear operator
- Sizes from 3–12" | DN80–DN300
- Pressures up to 175 psi | 1207 kPa | 12 bar



## Vic-Plug Valve for AWWA

SERIES 365

[Download publication 23.06](#) for complete information

- Conforms to AWWA C-509 standard for end-to-end dimensions
- Round port provides better flow and allows easier passage of cleaning pigs
- Sizes from 3–12" | DN80–DN300
- Pressures up to 175 psi | 1207 kPa | 12 bar
- Additional sizes available, contact Victaulic





## Plug Valve

SERIES 465

[Download publication 17.36](#) for complete information

- Typically used in reverse osmosis desalination plants for on/off and control services
- Available without operator or with manual, pneumatic, hydraulic and electric actuators
- Features grooved ends for installation in either StrenghThin™ Systems or OGS
- Sizes from 2–20" | DN50–DN500
- Pressures up to 1450 psi | 9997 kPa | 100 bar

### Certifications/Listings:

[Download publication 02.06](#) for potable water approvals



## Plug Valve

SERIES 466

[Download publication 17.39](#) for complete information

- Typically used in reverse osmosis desalination plants for on/off and control services
- Features grooved ends for installation in either StrenghThin™ Systems or OGS
- Sizes from 10–24" | DN250–DN600
- Pressures up to 1200 psi | 8274 kPa | 83 bar

### Certifications/Listings:

[Download publication 02.06](#) for potable water approvals



## Hydraulic Control Valve— Diaphragm Actuated Valve Body

BERMAD MODEL 700 FAMILY

Contact Victaulic for publication

- Obstruction-free design increases flow capacity by 15%
- Optional and customizable trim configurations provide functionality without external power and enable a range of functions: on/off, pressure reducing, pressure relief, pressure sustaining, surge anticipating, pump control, level control, flow control and burst control
- Sizes from 1½–36" | DN40–DN900;  
Grooved sizes from 1½–8" | DN40–DN200
- Only available in Canada



## Suction Diffuser

SERIES 731-D

[Download publication 09.20](#) for complete information

- Allows building up at a 90° angle from the pump, saving valuable space in the mechanical room while still protecting the pump against cavitation
- ANSI Class 150, Australian Standard Table E, PN10/16, GB, and JIS 10K
- Sizes from 3–12" | DN80–DN300
- Pressures up to 300 psi | 2068 kPa | 21 bar



## Vic-Strainer Tee Type

SERIES 730

[Download publication 09.02](#) for complete information

- Lighter than flanged Y-type strainers and provides straight-through flow for lower pressure drop
- Sizes from 1½–12" | DN40–DN300
- Pressures up to 750 psi | 5171 kPa | 52 bar



## Vic-Strainer Wye Type

SERIES 732

[Download publication 09.03](#) for complete information

- Provides straight-through flow for lower pressure drop
- Sizes from 2–12" | DN50–DN300
- Pressures up to 300 psi | 2068 kPa | 21 bar





### AGS Suction Diffuser

SERIES W731-D

[Download publication 20.20](#) for complete information

- Allows building up at a 90° angle from the pump saving valuable space in the mechanical room while still protecting the pump against cavitation
- Flanges may be machined to match most global (ANSI, DIN, GB, JIS, and AS-E) flange bolt hole patterns within the diffuser pressure rating
- Sizes from 14–24" | DN350–DN600
- Pressures up to 300 psi | 2068 kPa | 21 bar



### AGS Tee Type Vic-Strainer®

SERIES W730

[Download publication 20.11](#) for complete information

- Lighter than flanged Y-type strainers and provides straight-through flow for lower pressure drop
- Sizes from 14–24" | DN350–DN600
- Pressures up to 300 psi | 2068 kPa | 21 bar



### AGS Wye Type Vic-Strainer®

SERIES W732

[Download publication 20.19](#) for complete information

- Provides straight-through flow for lower pressure drop
- Sizes from 14–18" | DN350–DN450
- Pressures up to 300 psi | 2068 kPa | 21 bar



Certifications/Listings:



[Download publication 10.01](#) for complete information

### Triple Service (Duty) Valve Assemblies

BUTTERFLY/CHECK VALVE

[Download publication 08.09](#) for complete information

- Assembles with Style 107 rigid couplings or Style 177N flexible couplings
- Sizes from 2½–12" | DN65–DN300
- Pressures up to 300 psi | 2068 kPa | 21 bar



### AGS Triple Service Valve Assemblies

BUTTERFLY/CHECK VALVE

[Download publication 20.18](#) for complete information

- Provides shut-off and throttling with positive mechanical memory
- Comprised of a Series W761 AGS butterfly valve and a Series W715 Vic-Check valve
- Sizes from 14–24" | DN350–DN600
- Pressures up to 232 psi | 1600 kPa | 16 bar



Certifications/Listings:



[Download publication 10.01](#) for complete information

### Triple Service (Duty) Valve Assemblies

PLUG/CHECK VALVE

[Download publication 08.09](#) for complete information

- Provides shut-off, throttling with positive mechanical memory and non-slam check service in one unit
- Sizes from 3–12" | DN80–DN300
- Pressures up to 175 psi | 1207 kPa | 12 bar





## FireLock™ Butterfly Valve

SERIES 705 Supervised Open

[Download publication 10.81](#) for complete information

- Has weatherproof actuator housing approved for indoor or outdoor use
- Ductile iron body and disc with EPDM seats
- Sizes from 2–12" | DN50–DN300
- Pressures up to 300 psi | 2068 kPa | 21 bar

### Certifications/Listings:



[Download publication 10.01](#) for complete information



## FireLock™ Butterfly Valve

SERIES 707C Supervised Closed

[Download publication 10.75](#) for complete information

- Is designed to be Supervised Closed during normal operating conditions
- Ductile iron body and disc with EPDM seats
- Sizes from 2–8" | DN50–DN200
- Pressures up to 300 psi | 2068 kPa | 21 bar

### Certifications/Listings:



[Download publication 10.01](#) for complete information



## FireLock™ Check Valve

SERIES 717H High Pressure

[Download publication 10.08](#) for complete information

- Features a stainless steel disc which seats against the o-ring seal, when mounted on the electroless nickel plated
- Sizes from 2–3" | DN50–DN80
- Pressures up to 365 psi | 2517 kPa | 25 bar

### Certifications/Listings:



[Download publication 10.01](#) for complete information



## FireLock™ Check Valve

SERIES 717

[Download publication 10.08](#) for complete information

- Features an elastomer encapsulated disc with an electroless nickel plated seat
- Sizes from 2½–12" | DN65–DN300
- Pressures up to 365 psi | 2517 kPa | 25 bar

### Certifications/Listings:



[Download publication 10.01](#) for complete information



## FireLock™ Riser Check Valve

SERIES 717HR High Pressure

[Download publication 10.09](#) for complete information

- Features a stainless steel disc which seats against the o-ring seal, when mounted on the electroless nickel plated face
- Includes upstream and downstream pressure taps, must specify riser check kit when ordered
- Sizes from 2–3" | DN50–DN80
- Pressures up to 365 psi | 2517 kPa | 25 bar

### Certifications/Listings:



[Download publication 10.01](#) for complete information



## FireLock™ Riser Check Valve

SERIES 717R

[Download publication 10.09](#) for complete information

- Features an elastomer encapsulated disc with an electroless nickel plated seat
- Includes upstream and downstream pressure taps, must specify riser check kit when ordered
- Sizes from 4–8" | DN100–DN200
- Pressures up to 365 psi | 2517 kPa | 25 bar

### Certifications/Listings:



[Download publication 10.01](#) for complete information





## FireLock™ Gate Valves

SERIES 771H OS&Y

[Download publication 10.92](#) for complete information

- Used when positive shut-off is required in a fire line and a quick visual indicator of open/closed position is needed
- Sizes from 2½–12" | DN65–DN300
- Pressures up to 250 psi | 1724 kPa | 17 bar

### Certifications/Listings:



[Download publication 10.01](#) for complete information



## FireLock™ Gate Valves

SERIES 772H NRS

[Download publication 10.92](#) for complete information

- Used for shut-off service where the valve is operated remotely
- Sizes from 2½–12" | DN65–DN300
- Pressures up to 250 psi | 1724 kPa | 17 bar

### Certifications/Listings:



[Download publication 10.01](#) for complete information



## FireLock™ Alarm Check Valve

SERIES 751

[Download publication 30.01](#) for complete information

- Prevents the reverse flow of water from the system piping to the water supply
- Sizes from 1½–8" | DN40–DN200
- Pressures up to 300 psi | 2068 kPa | 21 bar

### Certifications/Listings:



[Download publication 10.01](#) for complete information



Valve shown with *Vic-Quick* riser.

### Certifications/Listings:



[Download publication 10.01](#) for complete information



Valve shown with *Vic-Quick* riser.

### Certifications/Listings:



[Download publication 10.01](#) for complete information



Valve shown with *Vic-Quick* riser.

### Certifications/Listings:



[Download publication 10.01](#) for complete information

## FireLock NXT™ Check Device

SERIES 768N Dry System

[Download publication 31.80](#) for complete information

- For use where piping may freeze such as unheated warehouses, outdoor parking garages or stadiums
- Actuation options: Series 776 low pressure actuator
- Available bare, pretrimmed, as a Vic-Quick riser or in a Series 745 *FireLock Fire-Pac* cabinet
- Sizes from 1½–8" | DN40–DN200
- Pressures up to 300 psi | 2068 kPa | 20 bar

## FireLock NXT™ Check Device

SERIES 769N Deluge System

[Download publication 31.81](#) for complete information

- For use where water curtains and fast water delivery are required such as highly-flammable material storage facilities or airplane hangars
- Actuation options: Series 753-E solenoid actuator, Series 776 low pressure actuator
- Available bare, pretrimmed, as a Vic-Quick riser or in a Series 745 *FireLock Fire-Pac* cabinet
- Sizes from 1½–8" | DN40–DN200
- Pressures up to 300 psi | 2068 kPa | 20 bar

## FireLock NXT™ Check Device

SERIES 769N Preaction System

[Download publication 31.82](#) for complete information

- For use where redundant safeguards against system activation are required such as priceless art storage, libraries or data centers
- Actuation options: Series 753-E solenoid actuator, Series 776 low pressure actuator, Series 767 electric/pneumatic actuator, Series 798 double pneumatic actuator
- Available bare, pretrimmed, as a Vic-Quick riser or in a Series 745 *FireLock Fire-Pac* cabinet
- Sizes from 1½–8" | DN40–DN200
- Pressures up to 300 psi | 2068 kPa | 20 bar



## Grooved End Valves For the Water, Wastewater and Power Industries

**FireLock™ Fire-Pac**

SERIES 745

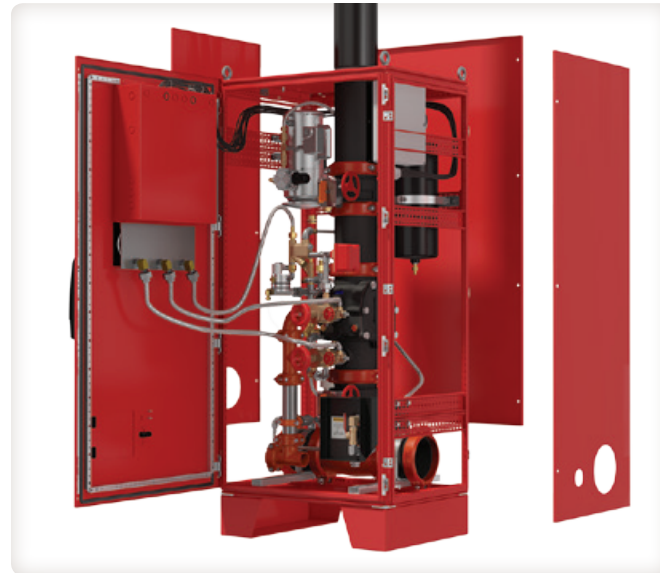
[Download publication 30.23](#) for complete information

- Completely preassembled fire protection valve enclosed in weatherproof cabinet
- Sizes from 1½–8" | DN40–DN200
- Pressures up to 300 psi | 2068 kPa | 21 bar

**Certifications/Listings:****Customized Solutions**

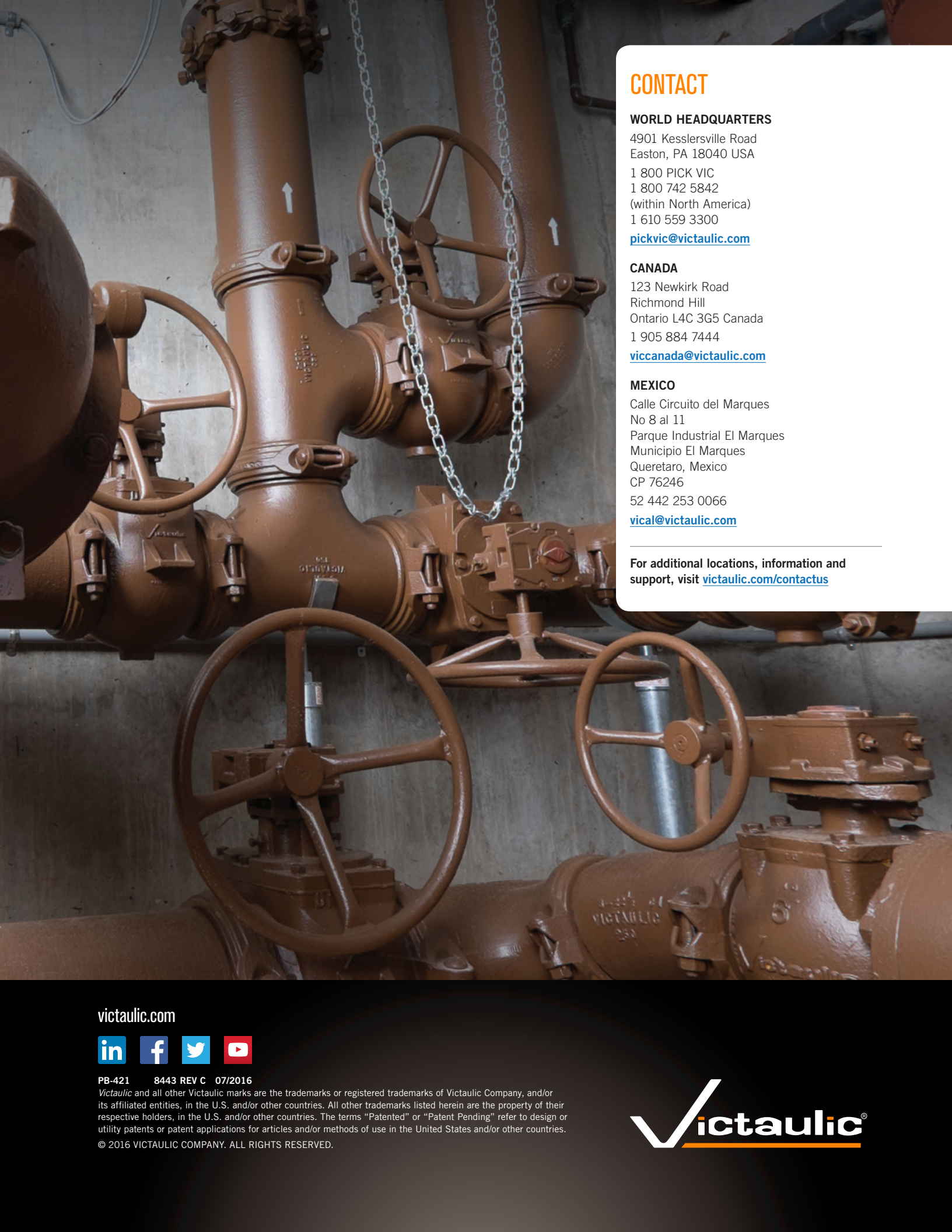
With more options available than ever before each Fire-Pac System is completely unique.

- Weatherproofing to NEMA 4 standards
- Pipe feed and drain can be located on the left, right or bottom panels
- Insulation and heating components available down to a minimum ambient temperature of 20°F | -6°C
- Compressor and nitrogen fill kit options
- Panel design options now including an addressable panel capable of networking with other intelligent devices
- Special cabinet color option



## Grooved End Valves For the Water, Wastewater and Power Industries





## CONTACT

### WORLD HEADQUARTERS

4901 Kesslersville Road  
Easton, PA 18040 USA

1 800 PICK VIC  
1 800 742 5842  
(within North America)  
1 610 559 3300

[pickvic@victaulic.com](mailto:pickvic@victaulic.com)

### CANADA

123 Newkirk Road  
Richmond Hill  
Ontario L4C 3G5 Canada  
1 905 884 7444

[viccanada@victaulic.com](mailto:viccanada@victaulic.com)

### MEXICO

Calle Circuito del Marques  
No 8 al 11  
Parque Industrial El Marques  
Municipio El Marques  
Queretaro, Mexico  
CP 76246

52 442 253 0066

[vical@victaulic.com](mailto:vical@victaulic.com)

---

For additional locations, information and support, visit [victaulic.com/contactus](http://victaulic.com/contactus)

[victaulic.com](http://victaulic.com)



PB-421 8443 REV C 07/2016

*Victaulic* and all other Victaulic marks are the trademarks or registered trademarks of Victaulic Company, and/or its affiliated entities, in the U.S. and/or other countries. All other trademarks listed herein are the property of their respective holders, in the U.S. and/or other countries. The terms "Patented" or "Patent Pending" refer to design or utility patents or patent applications for articles and/or methods of use in the United States and/or other countries.

© 2016 VICTAULIC COMPANY. ALL RIGHTS RESERVED.

