

VICTAULIC® FIRE PROTECTION STORAGE SOLUTIONS

FROM STREET TO SPRINKLER, THERE'S NEVER A QUESTION.
VERSATILITY AND VALUE ARE DELIVERED.



ENGINEERING CONFIDENCE INTO EVERY BUILD

“VICTAULIC IS ALWAYS ON THE LEADING EDGE WITH ITS PRODUCTS. THE OTHER COMPANIES ALWAYS SEEM TO BE TRYING TO MAKE SOME VERSION OF WHAT VICTAULIC HAS ALREADY CREATED.”

Steve Kirby, Contractor

Through continuous research and development and bold innovation Victaulic's pipe joining and flow control solutions have optimized construction productivity and reduced risk, ensuring projects are completed safely, on time and within budget.

Designing fire protection systems for storage facilities presents a unique set of challenges, all of which can be addressed by leveraging Victaulic's "street-to-sprinkler" product solutions along with our extensive system knowledge and unmatched support.

WATER SUPPLY PIPING SOLUTIONS

Water supply lines see some of the toughest operating conditions. Whether they are open to the elements or buried beneath them, system components must be trusted. Victaulic has proven to increase overall system durability in the most demanding construction projects and operating conditions.

DEPENDABLE GATE VALVE SOLUTIONS

SERIES 771A and 771F FireLock™ OS&Y Gate Valves
SERIES 772A and 772F FireLock NRS Gate Valves
SERIES 773 FireLock Wall Post Indicator
SERIES 774 FireLock Upright Post Indicator

Used for on/off operation of fire protection systems, dependable gate valves can improve your bottom line over the life of the system. Victaulic gate valves feature lighter weight ductile iron bodies, remote operation and a rubber encapsulated disc for true compression sealing.

Approvals: FM, cULus

Publication: [Download Publication 10.92](#) for more information



WATER TANK SOLUTIONS

SERIES 866-460 Modulating Horizontal Level Control Valve
 SERIES 866-465 Bi-level Electronic Level Control Valve
 SERIES 866-466 Bi-level Vertical Float Level Control Valve
 SERIES 866-480 Modulating Altitude Pilot Level Control Valve
 SERIES 866-482 Three-way Altitude Pilot Level Control Valve



When system water is supplied through tanks, level control valves are required to mechanically, electrically or hydraulically sense and react to changing water levels. From optimal water quality and environmental conditions to less than favorable conditions, Victaulic's partnership with Bermad opens a wide variety solutions for water tanks.

- Regional availability, contact [Victaulic](#) for details

Publication: [Download Publication 30.94](#) for more information

See more at victaulic.com/systems/hydraulic-control-valves-for-fire-protection

SYSTEM SOLUTION FOR HDPE PIPE

STYLE 905 Coupling for Plain End HDPE Pipe
 STYLE 907 Transition Coupling for HDPE-to-Steel Pipe



Constructed of durable ductile iron housings and fluoropolymer-coated, corrosion-resistant hardware, the System Solution for HDPE Pipe is specifically designed to be buried and is FM Approved for use in underground fire service mains.

Approvals: FM

Publication: [Download Publication 19.07](#) for Style 905
[Download Publication 19.10](#) for Style 907

INSTALLATION-
READY™



INSTALLS UP TO 10× FASTER



INSTALLATION IS WEATHER
INDEPENDENT



MEETS OR EXCEEDS PRESSURE
RATINGS OF HDPE PIPE



INSTALLS WITH SIMPLE TOOLS

See more at victaulic.com/systems/system-solution-hdpe-pipe

above ground
.....
below ground

PUMP ROOM SOLUTIONS

Let us be a strategic partner from design through fabrication, while we continue to provide the advanced flow control solutions we're known for.

HYDRAULIC CONTROL VALVES

SERIES 867-42T Pressure Reducing Control Valve
SERIES 867-43T Pressure Relief Control Valve



- Precise yet smooth responses to fluctuations in flow and pressure
- Advanced valve body design to reduce friction loss
- Maintenance made easy, incorporating customer feedback
- Regional availability, contact [Victaulic](#) for details

Approvals: FM, cULus

Publication: [Download Publication 30.93](#) for more information

See more at victaulic.com/systems/hydraulic-control-valves-for-fire-protection

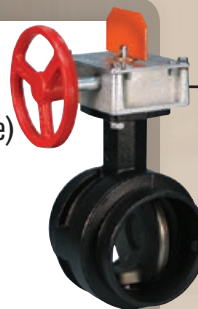
FLOW CONTROL VALVES

SERIES 705 Butterfly Valve – Supervised Open (SERIES 765 – High Pressure)
SERIES 717 Check Valve (SERIES 717H – High Pressure)
SERIES 771 FireLock™ OS&Y and SERIES 772 FireLock NRS Gate Valves
SERIES 728 FireLock Ball Valve
SERIES 735 Fire Pump Test Meter

- Pioneers in rubber-coated discs and pre-wired and tested valves
- Forward-thinking design, reducing valve weight and optimizing flow performance from the beginning

Approvals: FM, cULus, LPCB, VdS

Publication: [Download Publication 10.81](#) for Series 705 and Series 765
[Download Publication 10.08](#) for Series 717 and Series 717H
[Download Publication 10.92](#) for Series 771 and Series 772
[Download Publication 10.17](#) for Series 728
[Download Publication 10.11](#) for Series 735



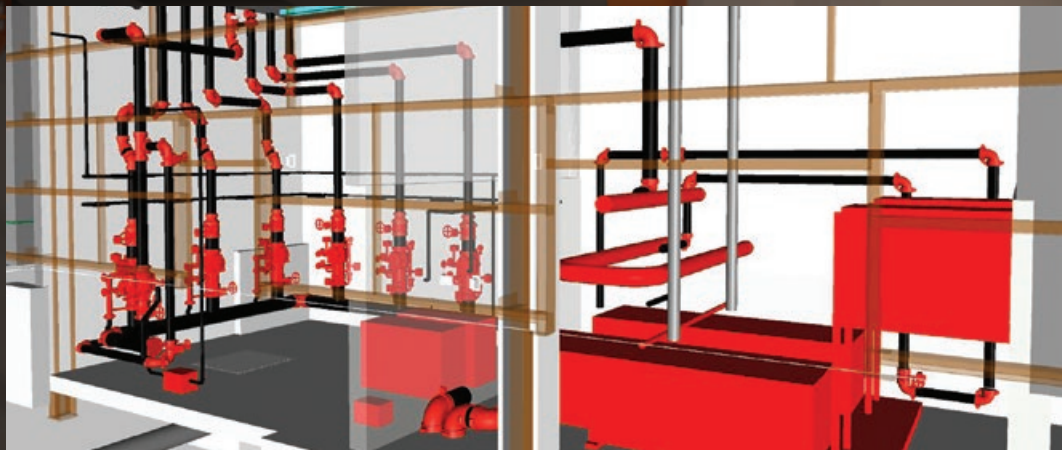
VIRTUAL DESIGN AND CONSTRUCTION

SOLUTIONS AT ALL PROJECT STAGES

Count on Victaulic Virtual Design and Construction (VDC) to model your most challenging spaces, convert your most complicated pump room or teach your teams how to route more efficiently within Revit®. Turbocharge your construction timeline. We offer a suite of services customized to your needs.

Services include:

- Spatial Planning and Pump Room Design
- Full BIM Coordination
- Advanced Software and Content Development
- Revit® and BIM Training
- Detail Conversion into Revit®
- Fab Shop Analysis



See more at victaulicsoftware.com

SYSTEM AND ZONE CONTROL

From a single floor to multi-zone facilities, Victaulic is a leader in plug-and-play systems or zone control. Fully customizable solutions show up to the job site tested and ready to install, taking the guesswork and risk out of the field.

FLOW CONTROL VALVES

SERIES 717R FireLock™ Riser Check Valve
SERIES 717HR FireLock High Pressure Riser Check Valve
SERIES 747M FireLock Commercial Zone Control Riser Module

Our riser check valves feature upstream and downstream pressure taps, while our zone control riser module features a cast body with shut off valve, test and drain valve combination with different sizes, flow switch, and a pressure gauge.



Approvals: FM, cULus

Publication: [Download Publication 10.09](#) for Series 717R and Series 717HR
[Download Publication 10.96](#) for Series 747M

CONNECT IT ALL WITH EFFICIENCY AND EASE

STYLE 109 FireLock One-Bolt Installation-Ready™ Coupling
STYLE 009N FireLock EZ™ Rigid Coupling
FireLock Installation-Ready Fittings

Installation-Ready technology features no loose parts, no torque requirements and visual confirmation of proper installation. Built into both couplings and fittings, cutting out installation steps speeds up every piece of the project.

Approvals: FM, cULus, LPCB, VdS, CE

Publication: [Download Publication 10.64](#) for Style 009N and Style 109
[Download Publication 10.06](#) for Installation-Ready Fittings



See more at victaulic.com/systems/installation-ready-technology

ENGINEERED ASSEMBLIES

SERIES F01 Zone Control Stations SERIES F02 Manifolds

Get ahead of the game, and show up to the job site with the heavy lifting done. Configured and fit to your needs, *Victaulic* zone control stations and manifolds arrive on the job site fully-assembled and tested, providing simplicity and single-source confidence.

Approvals: Components individually listed and approved. Product designed and manufactured under the Victaulic Quality Management System as certified by LPCB in accordance with ISO-9001:2008.



DISTRIBUTION PIPING

There's no denying project timelines can go awry, but don't let the fire protection system be the cause. Victaulic Installation-Ready™ technology enables fast, easy pipe connections and reduces the number of loose parts to handle in the air.

OUTLET SOLUTIONS

NO. 142 FireLock™ IGS™ Welded Outlet
NO. 920N FireLock IGS Mechanical-T Outlet
NO. 922 FireLock IGS Outlet-T

Increase installation speed and ease from the beginning and optimize your distribution piping by deciding on *FireLock IGS* 1" | DN25 outlets during fabrication. Making the switch to grooved outlets sets up the last six feet of the system.



Approvals: FM, cULus, LPCB, VdS, GOST-R/EAC

Publication: [Download Publication 10.54](#) for No. 142 and Style 920N
[Download Publication 10.52](#) for No. 922



PIPE JOINING SOLUTIONS

STYLE 109 FireLock™ One-Bolt
Installation-Ready™ Coupling
STYLE 009N FireLock EZ™ Rigid Coupling
FireLock Installation-Ready Fittings
NO. 65 *FireLock IGS™* End of Run Elbow
NO. 67 Vic™ -End II End of Run Elbow

INSTALLATION-
READY™

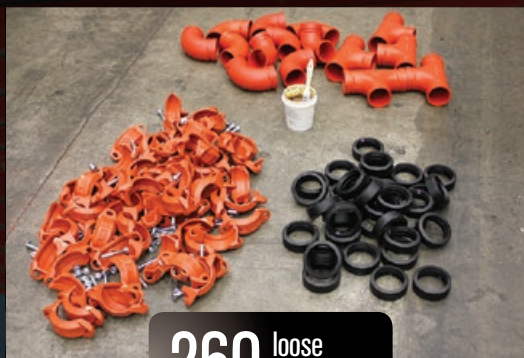


The commitment to speed started with our *Installation-Ready* Style 009N coupling, no longer requiring the coupling to be disassembled before installation, and has permeated through to our latest innovation the *FireLock Installation-Ready Fittings*, that combine up to 22 parts into 1. End-of-run tees that feature both threaded and *FireLock IGS* connections complete the product portfolio that speeds project completion.

- Compressed project schedules
- Reduced material handling
- Enhanced job site safety

Approvals: FM, cULus, LPCB, VdS

Publication: [Download Publication 10.64](#) for Style 009N and Style 109
[Download Publication 10.06](#) for *Installation-Ready Fittings*
[Download publication 10.54](#) for No. 65
[Download Publication 10.21](#) for No. 67



260 loose
pieces



15 connections
ready to install

See more at firelockfittings.com or victaulic.com/109

BRANCH LINE TO SPRINKLER HEAD

No need to measure twice and cut once. We're all about out-of-the-box ready, with the freedom to do whatever you want. Victaulic solutions make that easier to achieve, and easier to verify.

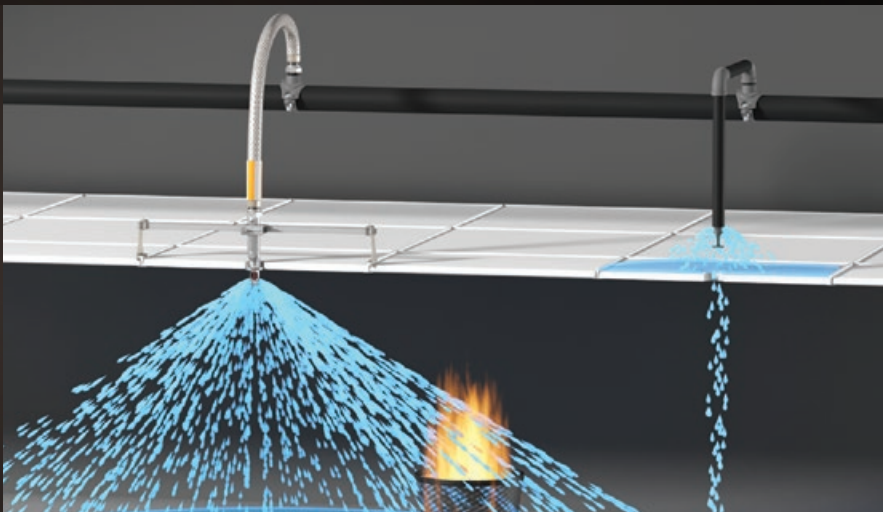
FINISHED APPLICATIONS VICFLEX™ FLEXIBLE SPRINKLER SYSTEMS

SERIES AH2-CC or AH2 Braided Hose
SERIES AH1-CC or AH1 Braided Hose

In storage facilities the distance between the distribution piping and final sprinkler placement can be significant – but utilizing *VicFlex* and *FireLock™ IGS™* solutions in tandem provides significant safety benefits. Increase productivity while combating sprinkler positioning problems due to ceiling sag or shift.

Approvals: FM, cULus, LPCB, VdS, CCCf, CNBOP

Publication: [Download Publication 10.85](#) for Series AH2-CC or Series AH2
[Download Publication 10.95](#) for Series AH1-CC or Series AH1



See more at vicflex.com

EXPOSED APPLICATIONS 1" | DN25 GROOVED SOLUTIONS

FireLock™ IGS™ for Small Diameter Hard Pipe

Simplify

- Eliminate Mess – no oil, shavings, tape, or dope

Save

- Effort – eliminate pipe wrenches
- Time – Up to 2X faster to install

Confirm

- Replace threaded connections with mechanical joints
- Bolt pad to bolt pad visual confirmation

Approvals: FM, cULus, LPCB, VdS

Publication: [Download Publication 10.54](#) for more information



See more at firelockigs.com

FIELD TOOLS 1" | DN25 ROLL GROOVING ON-SITE

RG2100 FireLock IGS Roll Grooving Tool

- Up to 55% less pipe prep
- Increased tool portability
- One-touch tool actuation
- No tool adjustment – groove within specification every time

Publication: [Download Publication 10.54](#) for more information



SPRINKLERS

It's easy – stay in the air, stay productive. Victaulic now offers solutions that eliminate prep work on the ground and keep installers in the air. But initial installation isn't the only thing that determines productivity, it's the rework required as well. Utilizing mechanical connections where possible instead of threaded connections ensures less downtime from leaks.

“REALISTICALLY YOU DON'T HAVE TO PREP ANYMORE, IT COMES IN A BOX AND YOU JUST START INSTALLING IT ON THE PIPE”

Purchasing Agent

FINISHED APPLICATIONS

VICFLEX™ Preassembled Systems

Take productivity to the next level. *VicFlex* Preassembled Systems are available with factory installed sprinklers, as well as specialty reducers. Made to order – assemblies ship in five days or less.

- Save up to 60% of the installation time
- Reduce risk with factory leak-tested sprinkler assemblies

Approvals: FM, cULus

Publication: [Download Publication 10.85, 10.95](#) for more information

See more at vicflex.com

EXPOSED APPLICATIONS INSTALLATION-READY™ SPRINKLERS

STYLE V9 Sprinkler Coupling

V47 K16.8

V34 K11.2

V46 K25.2

V48 K25.2

V49 K22.4



- Reduce Effort – eliminate sprinkler wrenches needed for threaded connections, reducing injury from repeated strenuous motion
- Increase Confidence and Decrease Training – the first sprinkler with “visual inspection” of proper installation
- Save Time – reduce leaks, repairs and additional testing

Approvals: FM, cULus

Publication: [Download Publication 10.65](#) for Style V9
[Download Publication 40.89](#) for V4702
[Download Publication 40.20](#) for V3403, V3404, V3407, V3408
[Download Publication 40.95 or 40.98](#) for V4601 and V4603
[Download Publication 40.91](#) for V4802
[Download Publication 40.92](#) for V4902



See more at victaulic.com/FPstorage



U.S./World Headquarters

4901 Kesslersville Road
Easton, PA 18040 USA

◀ victauliclocations.com

EMEA

Prijkelstraat 36
9810 Nazareth, Belgium

Asia Pacific

Unit 808, Building B
Hongwell International Plaza
No.1602 West Zhongshan Road
Shanghai, China 200235



PB-440 11644 REV B 08/2019

Victaulic and all other Victaulic marks are the trademarks or registered trademarks of Victaulic Company, and/or its affiliated entities, in the U.S. and/or other countries. All other trademarks listed herein are the property of their respective holders, in the U.S. and/or other countries. The terms "Patented" or "Patent Pending" refer to design or utility patents or patent applications for articles and/or methods of use in the United States and/or other countries.

© 2019 VICTAULIC COMPANY. ALL RIGHTS RESERVED.

