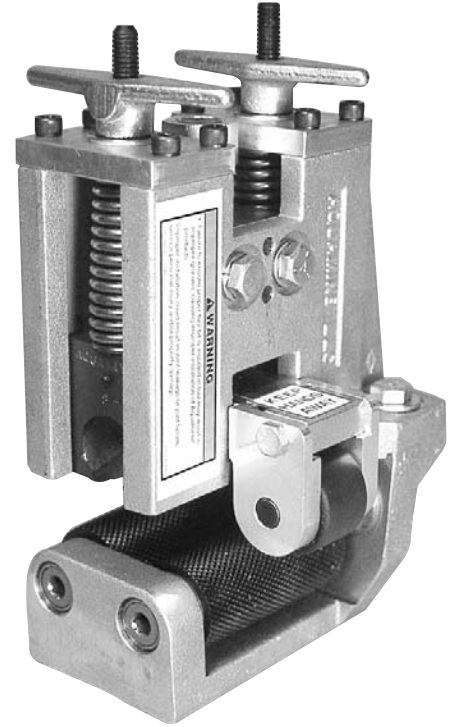


APG Cut Grooving/Beveling Tool for Aquamine® Pipe



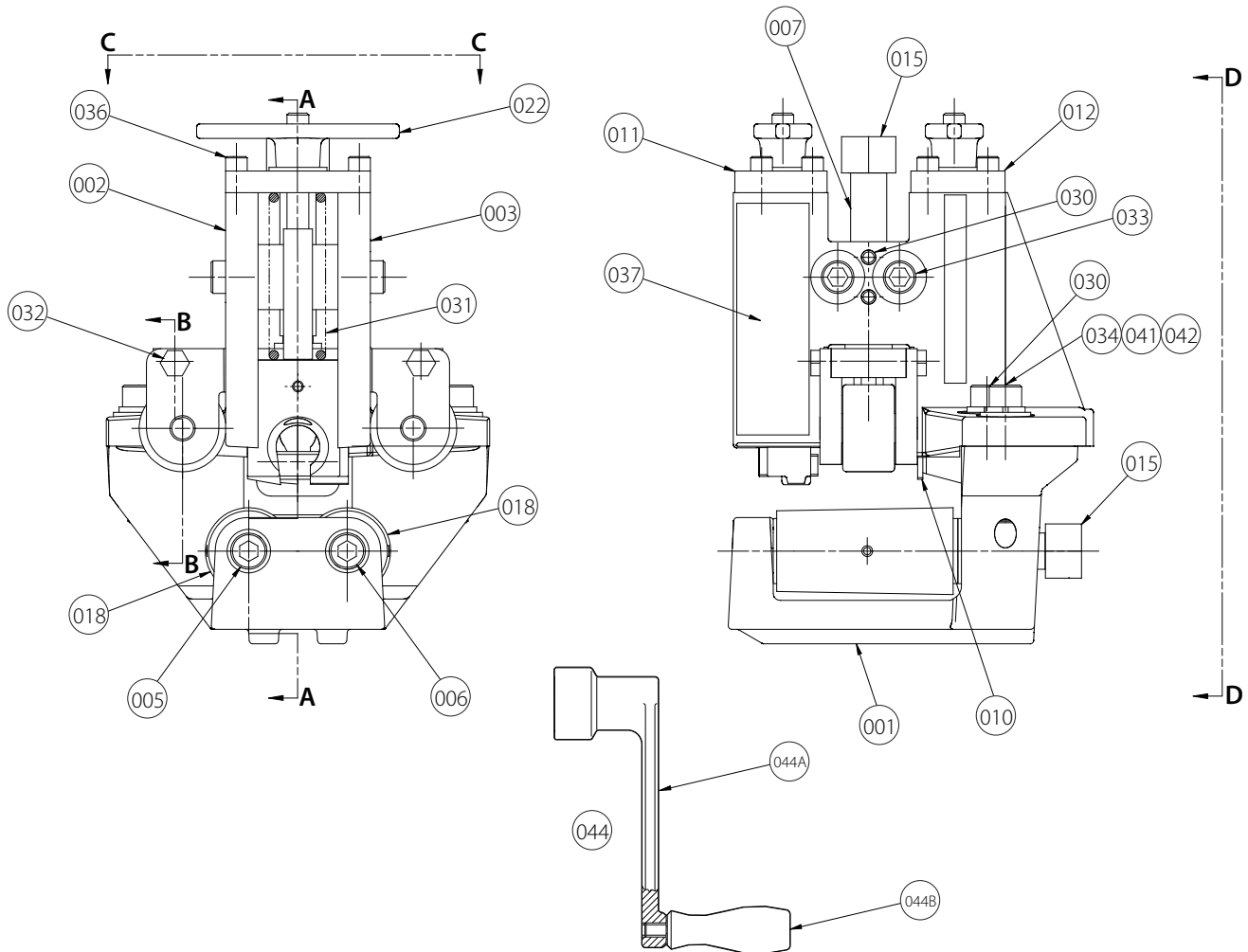
PARTS ORDERING INFORMATION

When ordering parts, the following information is necessary for Victaulic to process the order promptly:

1. Tool Model Number – APG
2. Quantity, Item Number, Part Number, Description
3. Where to send the part(s) – Company Name and Address
4. To whose attention to send the part(s)
5. Purchase Order Number

Parts may be ordered from your nearest Victaulic Sales Office.

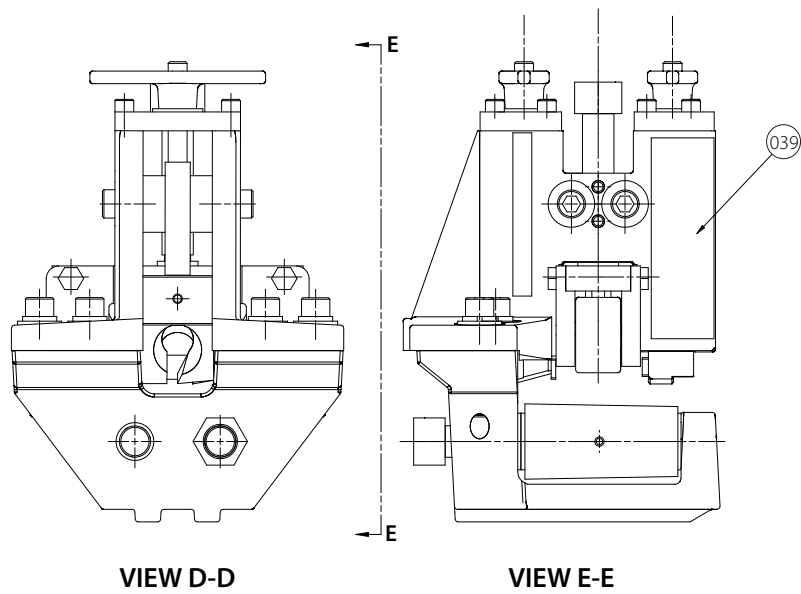
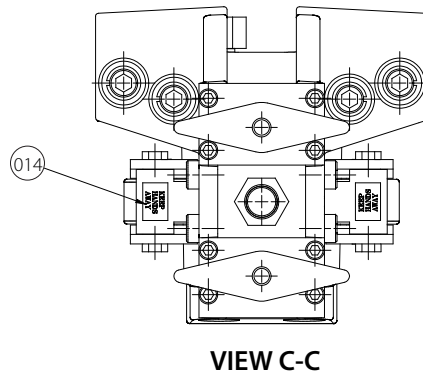
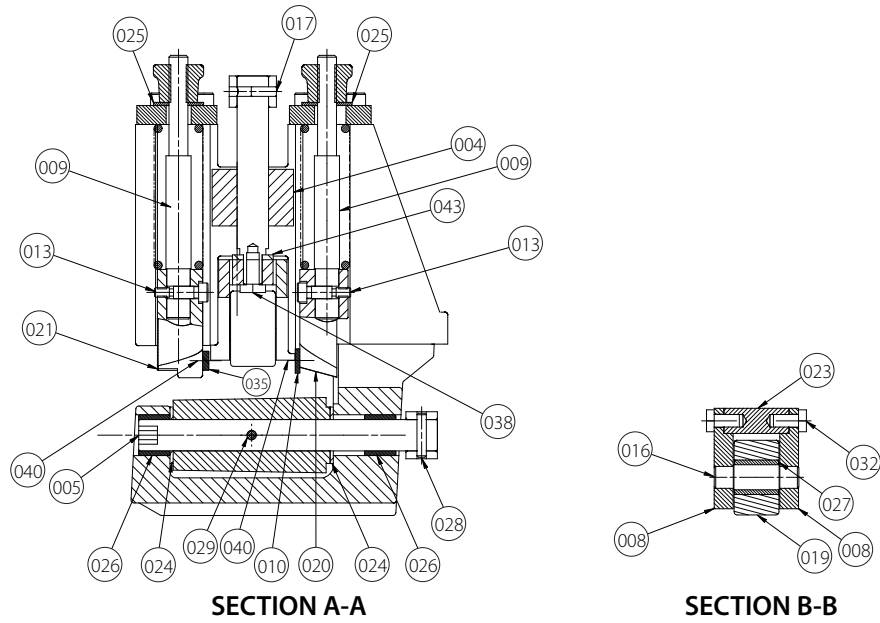
APG Cut Grooving/Beveling Tool for Aquamine® Pipe



Item#	Part #	Qty.	Description
001	R-001-413-MCH	1	Main Body
002	R-002-413-MCH	1	Cutter Housing (Left)
003	R-003-413-MCH	1	Cutter Housing (Right)
004	R-004-413-PLT	1	Upper Roll Guide Support
005	R-005-413-MCH	1	Lower Roll Drive Shaft
006	R-006-413-MCH	1	Lower Roll Shaft
007	R-007-413-PLT	1	Upper Roll Feed Screw
008	R-008-413-MCH	2	Side Plate Upper Roll Clevis
009	R-009-413-MCH	2	Clevis
010	R-023-413-MCH	1	Chamfer Blade Stop
011	R-011-413-MCH	1	Groove Cutter Cover Plate
012	R-012-413-MCH	1	Chamfer Cutter Cover Plate
013	N-S05-040-008	2	Shoulder Screw, 1/4" x 1/2" Lg., Blk. Ox.
014	R-027-226-LBL	2	Label - Keep Hands Away
015	R-015-413-PLT	2	Drive Nut
016	R-016-413-PLT	2	Upper Roll Clevis Pin
017	N-P02-003-008	1	Dowel Pin, 3/16" Dia. x 1/2" Lg.
018	R-018-413-MCH	2	Lower Roll
019	R-019-413-MCH	2	Upper Stabilizer Roll
020	R-K00-413-MCH	1	Chamfer Knife
021	R-K04-413-MCH	1	Grooving Knife (4 - 6-inch/114.3 - 168.3-mm Pipe)
022	R-016-003-0VG	2	Wing Handle
023	R-020-413-MCH	1	Top Plate Upper Roll Clevis

Item#	Part #	Qty.	Description
024	N-B05-062-002	4	Thrust Washer
025	N-W06-060-000	2	3/8" SAE Flat Washer, Pltd.
026	N-B02-062-003	4	Drawn Cup Needle Bearing, 5/8"
027	N-B02-050-001	2	Drawn Cup Needle Bearing, 1/2"
028	N-P01-003-014	1	Roll Pin, 3/16" Dia. x 7/8" Lg.
029	N-P01-003-106	2	Roll Pin, 3/16" Dia. x 1 1/2" Lg.
030	N-P02-004-012	6	Dowel Pin, 1/4" Dia. x 3/4" Lg.
031	N-M03-000-004	2	Compression Spring
032	N-S01-040-008	4	Hex Head Bolt, 1/4 - 20 UNC x 1/2" Lg., Pltd.
033	N-S03-060-008	4	Socket Head Cap Screw, 3/8 - 16 UNC x 1/2" Lg., Blk. Ox.
034	N-S03-060-200	4	Socket Head Cap Screw, 3/8 - 16 UNC x 2" Lg., Blk. Ox.
035	R-021-413-MCH	1	Groove Knife Stop
036	N-S03-040-010	8	Socket Head Cap Screw, 1/4 - 20 UNC x 5/8" Lg., Blk. Ox.
037	R-022-413-LBL	1	Warning Label - Instruction
038	N-S01-040-006	1	Hex Head Bolt, 1/4 - 20 UNC x 3/8" Lg., Pltd.
039	R-024-413-LBL	1	Warning Label - Blade
040	N-S04-005-004	4	Flathead No. 5 x 1/4" Lg.
041	N-W01-060-000	4	3/8" Std. Flat Washer, Pltd.
042	N-W03-060-000	4	Lock Washer, 3/8"
043	N-B05-037-002	1	Thrust Washer
044	R-026-413-ASY	1	Crank Assembly
044A	R-028-413-MCH	1	Crank
044B	N-M04-000-016	1	Handle

APG Cut Grooving/Beveling Tool for Aquamine® Pipe



APG Cut Grooving/Beveling Tool for Aquamine® Pipe

For complete contact information, visit www.victaulic.com

RP-APG 5521 REV A UPDATED 04/2009 RPL0APG000

VICTAULIC IS A REGISTERED TRADEMARK OF VICTAULIC COMPANY. © 2009 VICTAULIC COMPANY. ALL RIGHTS RESERVED. PRINTED IN THE USA.

RP-APG

