
CG336 Field Cut Groover for 3 – 36-inch Ductile Iron Pipe



PARTS ORDERING INFORMATION

When ordering parts, the following information is necessary for Victaulic to process the order promptly:

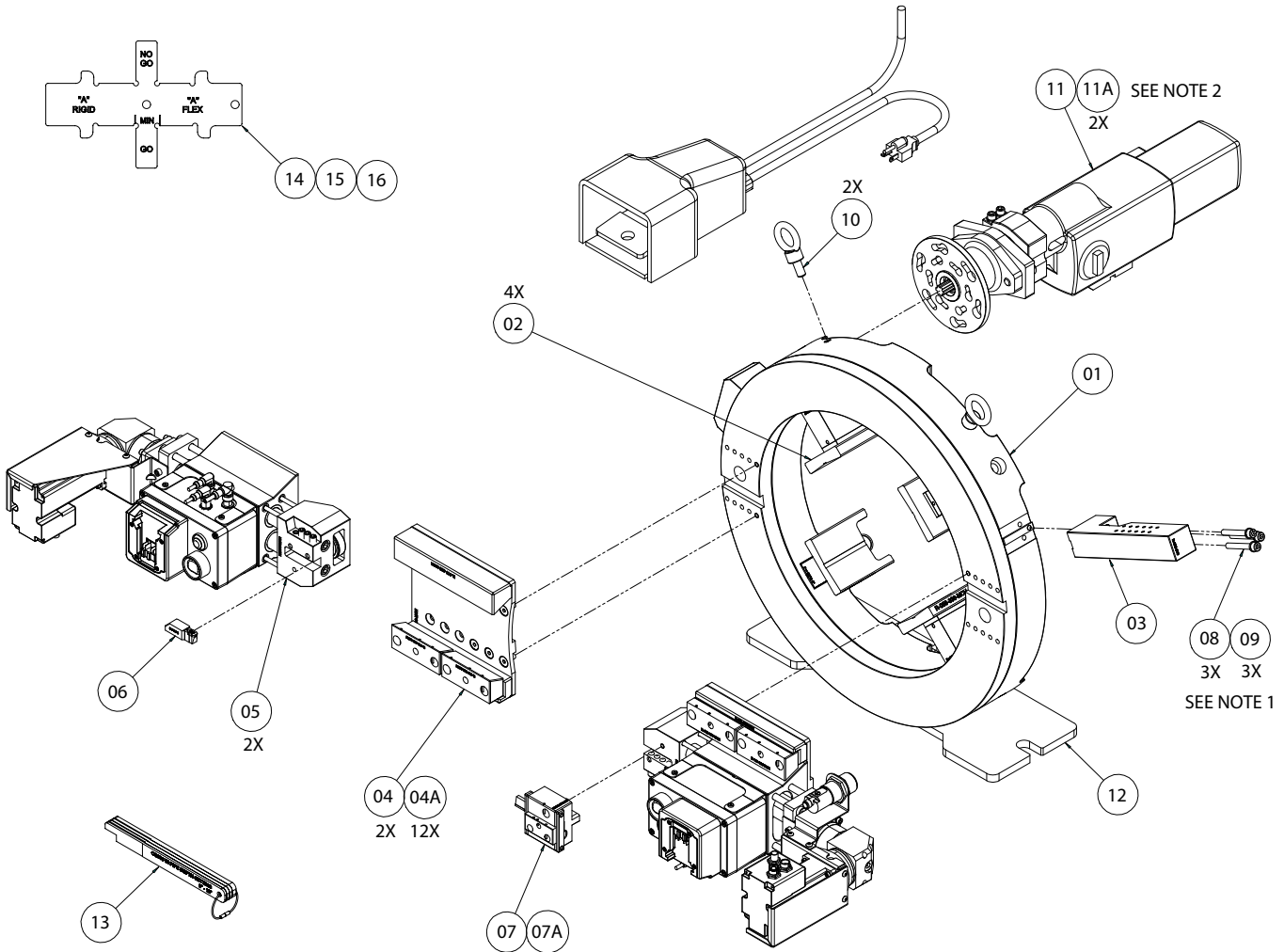
1. Tool Model Number – CG336
2. Serial Number for Component – The Serial Number can be found on the individual tool component.
3. Quantity*, Item Number, Part Number, Description
4. Where to send the part(s) – Company Name and Address
5. To whose attention to send the part(s)
6. Purchase Order Number

Parts may be ordered from your nearest Victaulic Sales Office.

* Quantity given in **Qty.** column indicates total number of pieces required per tool. Value of "A/R" indicates "As Required" which may differ based on usage and environment.

RING MOUNT ASSEMBLY, ELECTRIC, 3"-12" PIPE, PORTABLE FIELD CUT GROOVER, CG336

| PIPE SIZE | SPACER DESIGNATION | PIPE SPACER | TOOL BIT HOLDER | TOOL BIT (PKG / QTY 10) | CUTOFF MODULE (FLEXIBLE) | CUTOFF MODULE (RIGID) | CUTOFF BLADE |
|-----------|--------------------|-------------|-----------------|-------------------------|--------------------------|-----------------------|--------------|
| 3" | G | R031336MCH | R015T30MCP | RK00T30POP | R045336A08 | R045336A02 | R046336MCH |
| 4" | E | R029336MCH | | | | | |
| 6" | H | R032336MCH | | | | | |
| 8" | F | R030336MCH | R017T30MCP | RK00T30P1P | R045336A09 | R045336A03 | |
| 10" | D | R028336MCH | | | R045336A10 | R045336A04 | |
| 12" | A | R025336MCH | | | | | |



| Item # | Part # | Qty. | Description |
|--------|-------------|------|---|
| 01 | R140336ASY | 1 | Ring Assembly, 3"-12" Pipe |
| 02 | SEE TABLE A | 4 | Pipe Spacer Assembly, 3" / 76.2mm Thru - 36" / 914.4mm |
| 03 | R023336MCH | 1 | Ring Mount, Drive Tripper Mechanism |
| 04 | R115336ASY | 2 | Tool Head Mount Assembly |
| 04A | - | 12 | Screw, M8 X 1.25 X 20 90 DEG Flat Countersunk Head Cap, Hex Socket, ASTM F835M, Black Oxide Coated ** |
| 05 | R120336ASY | 2 | Head Assembly, Electric |
| 06 | SEE TABLE A | 1 | Tool Bit and Holder Assembly, Ductile Iron |
| 07 | SEE TABLE A | 1 | Cutoff Module Assembly, 3"-36" Portable Field Groover |
| 07A | R046336MCH | 1 | Cutoff Blade |
| 08 | - | 3 | Screw, M8 X 1.25 X 60 Hex Socket Head Cap, ASME B18.3.1M, ASTM A574M Alloy Steel, Black Oxide Coated |
| 09 | - | 3 | Washer, M8, Helical Spring-Lock, Regular, ASME B18.21.2M, Carbon Steel, ASTM F1941 Fe/Zn 3A Clear Zinc Plated |

| Item # | Part # | Qty. | Description |
|--------|------------|------|--|
| 10 | NMSC000160 | 2 | Lifting Eye, M12 X 1.75, 2250 lbs Work Load Limit, Steel, Nylon Coated |
| 11 | R215336ASY | 1 | Electric Motor Assembly 120 VAC |
| 11A | - | 2 | Screw, M8 X 1.25 X 20MM ** |
| 12 | R180336ASY | 1 | Support Stand, 3"-18" Rings |
| 13 | R225336ASY | 1 | Assembly, Setup Gauge, 3"-36" DIPS, Portable Field Cut Groover, CG336 |
| 14 | R130336MCH | 1 | "A" Dimension Gauge, 3"-6" DIPS, Portable Field Cut Groover, CG336 |
| 15 | R131336MCH | 1 | "A" Dimension Gauge, 8" DIPS, Portable Field Cut Groover, CG336 |
| 16 | R132336MCH | 1 | "A" Dimension Gauge, 10"-12" DIPS, Portable Field Cut Groover, CG336 |

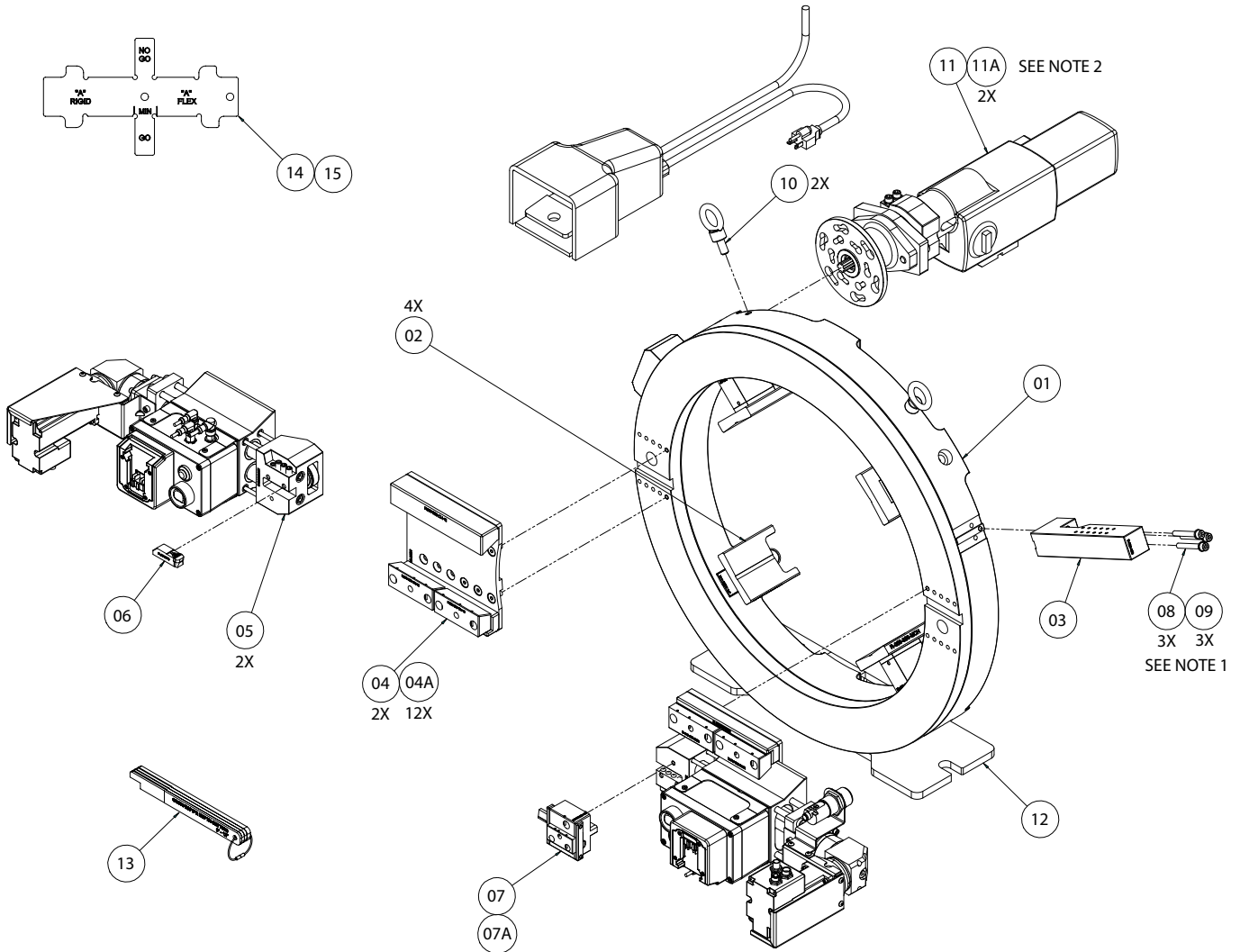
** Include In Tool Bag

NOTES:

1. APPLY LOCTITE 271 "THREAD LOCKER RED" TO THE THREADS OF ITEM 8 PRIOR TO ASSEMBLY.
2. See page 10 for motor assembly parts availability.

RING MOUNT ASSEMBLY, ELECTRIC, 14"-18" PIPE, PORTABLE FIELD CUT GROOVER, CG336

| Table A | | | | | | | |
|-----------|--------------------|-------------|-----------------|-------------------------|--------------------------|-----------------------|--------------|
| PIPE SIZE | SPACER DESIGNATION | PIPE SPACER | TOOL BIT HOLDER | TOOL BIT (PKG / QTY 10) | CUTOFF MODULE (FLEXIBLE) | CUTOFF MODULE (RIGID) | CUTOFF BLADE |
| 14" | M | R058336MCH | R021T30MCP | RK00T30P2P | R045336A11 | R045336A05 | R046336MCH |
| 16" | C | R027336MCH | | | R045336A12 | R045336A06 | |
| 18" | NONE | - | | | | | |



| Item # | Part # | Qty. | Description |
|--------|-------------|------|---|
| 01 | R141336ASY | 1 | Ring Assembly, 14"-18" Pipe |
| 02 | SEE TABLE A | 4 | Pipe Spacer Assembly, 3" / 76.2mm Thru - 36" / 914.4mm |
| 03 | R023336MCH | 1 | Ring Mount, Drive Tripper Mechanism |
| 04 | R115336ASY | 2 | Tool Head Mount Assembly |
| 04A | - | 12 | Screw, M8 X 1.25 X 20 90 DEG Flat Countersunk Head Cap, Hex Socket, ASTM F835M, Black Oxide Coated ** |
| 05 | R120336ASY | 2 | Head Assembly, Electric |
| 06 | SEE TABLE A | 1 | Tool Bit and Holder Assembly, Ductile Iron |
| 07 | SEE TABLE A | 1 | Cutoff Module Assembly, 3"-36" Portable Field Groover |
| 07A | R046336MCH | 1 | Cutoff Blade |
| 08 | - | 3 | Screw, M8 X 1.25 X 60 Hex Socket Head Cap, ASME B18.3.1M, ASTM A574M Alloy Steel, Black Oxide Coated |

| Item # | Part # | Qty. | Description |
|--------|------------|------|---|
| 09 | - | 3 | Washer, M8, Helical Spring-Lock, Regular, ASME B18.21.2M, Carbon Steel, ASTM F1941 Fe/Zn 3A Clear Zinc Plated |
| 10 | NMSC000160 | 2 | Lifting Eye, M12 X 1.75, 2250 lbs Work Load Limit, Steel, Nylon Coated |
| 11 | R215336ASY | 1 | Electric Motor Assembly 120 VAC |
| 11A | - | 2 | Screw, M8 X 1.25 X 20MM ** |
| 12 | R180336ASY | 1 | Support Stand, 3"-18" Rings |
| 13 | R225336ASY | 1 | Assembly, Setup Gauge, 3"-36" DIPS, Portable Field Cut Groover, CG336 |
| 14 | R133336MCH | 1 | "A" Dimension Gauge, 14" DIPS, Portable Field Cut Groover, CG336 |
| 15 | R134336MCH | 1 | "A" Dimension Gauge, 16"-24" DIPS, Portable Field Cut Groover, CG336 |

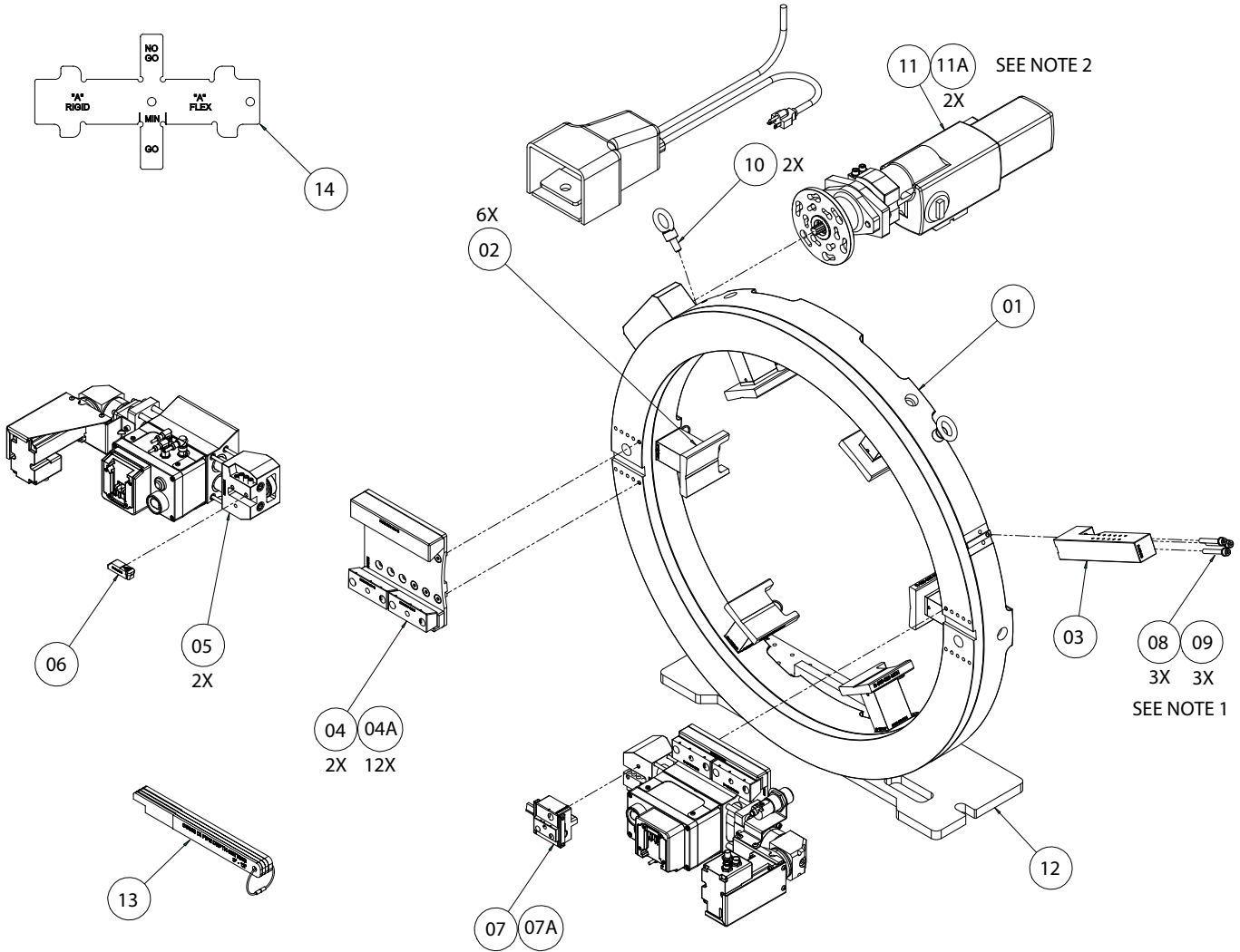
** Include In Tool Bag

NOTES:

1. APPLY LOCTITE 271 "THREAD LOCKER RED" TO THE THREADS OF ITEM 8 PRIOR TO ASSEMBLY.
2. See page 10 for motor assembly parts availability.

RING MOUNT ASSEMBLY, ELECTRIC, 20"-24" PIPE, PORTABLE FIELD CUT GROOVER, CG336

| PIPE SIZE | SPACER DESIGNATION | PIPE SPACER | TOOL BIT HOLDER | TOOL BIT (PKG / QTY 10) | CUTOFF MODULE (FLEXIBLE) | CUTOFF MODULE (RIGID) | CUTOFF BLADE |
|-----------|--------------------|-------------|-----------------|-------------------------|--------------------------|-----------------------|--------------|
| 20" | K | R034336MCH | R021T30MCP | RK00T30P2P | R045336A12 | R045336A06 | R046336MCH |
| 24" | L | R057336MCH | | | | | |



| Item # | Part # | Qty. | Description |
|--------|-------------|------|---|
| 01 | R142336ASY | 1 | Ring Assembly, 20"-24" Pipe |
| 02 | SEE TABLE A | 6 | Pipe Spacer Assembly, 3" / 76.2mm Thru - 36" / 914.4mm |
| 03 | R023336MCH | 1 | Ring Mount, Drive Tripper Mechanism |
| 04 | R115336ASY | 2 | Tool Head Mount Assembly |
| 04A | - | 12 | Screw, M8 X 1.25 X 20 90 DEG Flat Countersunk Head Cap, Hex Socket, ASTM F835M, Black Oxide Coated ** |
| 05 | R120336ASY | 2 | Head Assembly, Electric |
| 06 | SEE TABLE A | 1 | Tool Bit and Holder Assembly, Ductile Iron |
| 07 | SEE TABLE A | 1 | Cutoff Module Assembly, 3"-36" Portable Field Groover |
| 07A | R046336MCH | 1 | Cutoff Blade |
| 08 | - | 3 | Screw, M8 X 1.25 X 60 Hex Socket Head Cap, ASME B18.3.1M, ASTM A574M Alloy Steel, Black Oxide Coated |

| Item # | Part # | Qty. | Description |
|--------|------------|------|---|
| 09 | - | 3 | Washer, M8, Helical Spring-Lock, Regular, ASME B18.21.2M, Carbon Steel, ASTM F1941 Fe/Zn 3A Clear Zinc Plated |
| 10 | NMSC000160 | 2 | Lifting Eye, M12 X 1.75, 2250 lbs Work Load Limit, Steel, Nylon Coated |
| 11 | R215336ASY | 1 | Electric Motor Assembly 120 VAC |
| 11A | - | 2 | Screw, M10 X 1.5 X 20MM ** |
| 12 | R190336ASY | 1 | Support Stand, 20"-36" Rings |
| 13 | R225336ASY | 1 | Assembly, Setup Gauge, 3"-36" DIPS, Portable Field Cut Groover, CG336 |
| 14 | R134336MCH | 1 | "A" Dimension Gauge, 16"-24" DIPS, Portable Field Cut Groover, CG336 |

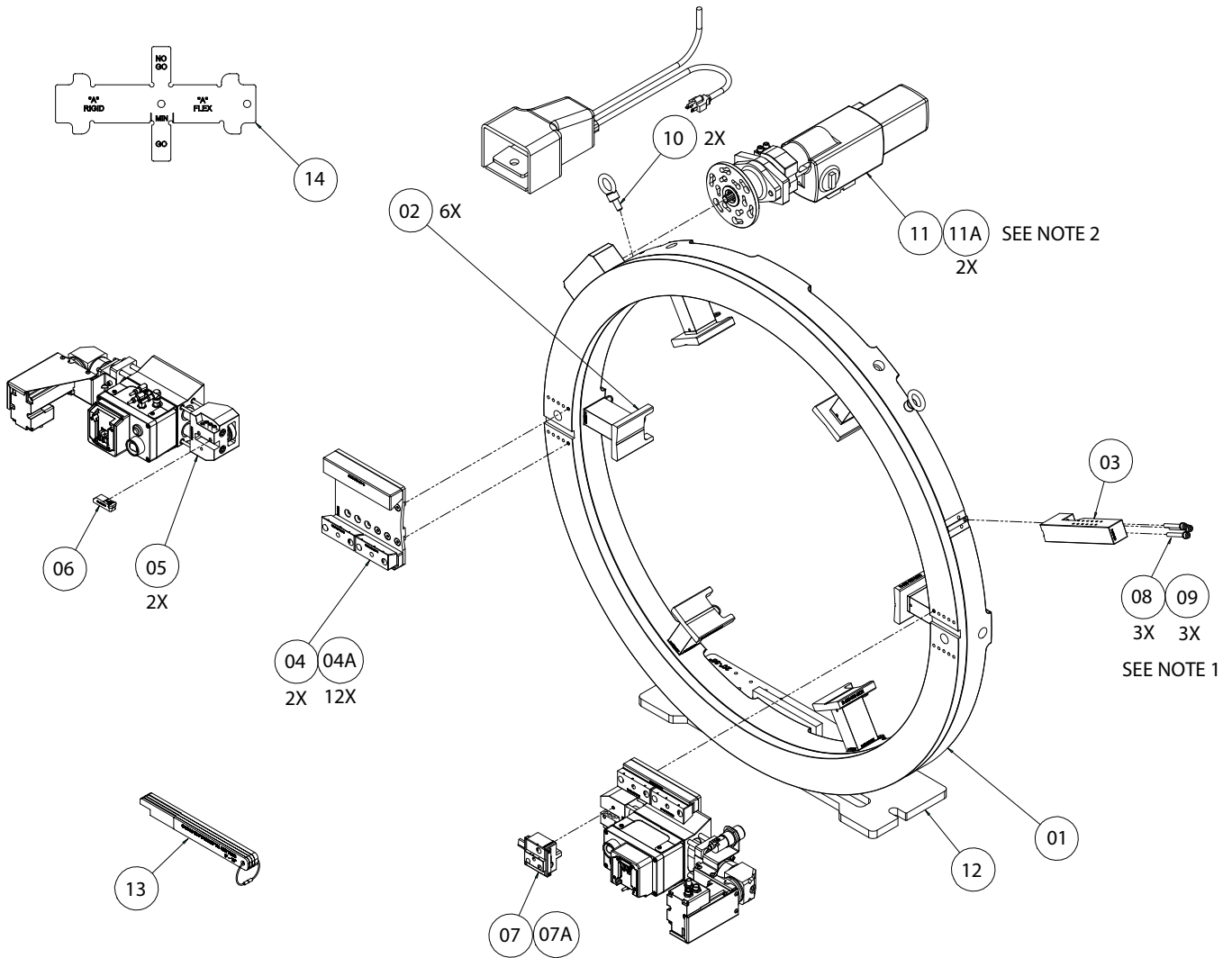
** Include In Tool Bag

NOTES:

1. APPLY LOCTITE 271 "THREAD LOCKER RED" TO THE THREADS OF ITEM 8 PRIOR TO ASSEMBLY.
2. See page 10 for motor assembly parts availability.

RING MOUNT ASSEMBLY, ELECTRIC, 30"-36" PIPE, PORTABLE FIELD CUT GROOVER, CG336

| Table A | | | | | | | |
|-----------|--------------------|-------------|-----------------|-------------------------|--------------------------|-----------------------|--------------|
| PIPE SIZE | SPACER DESIGNATION | PIPE SPACER | TOOL BIT HOLDER | TOOL BIT (PKG / QTY 10) | CUTOFF MODULE (FLEXIBLE) | CUTOFF MODULE (RIGID) | CUTOFF BLADE |
| 30" | J | R033336MCH | R023T30MCP | RK00T30P3P | R045336A13 | R045336A07 | R046336MCH |
| 36" | B | R026336MCH | | | | | |



| Item # | Part # | Qty. | Description |
|--------|-------------|------|---|
| 01 | R143336ASY | 1 | Ring Assembly, 30"-36" Pipe |
| 02 | SEE TABLE A | 6 | Pipe Spacer Assembly, 3" / 76.2mm Thru - 36" / 914.4mm |
| 03 | R023336MCH | 1 | Ring Mount, Drive Tripper Mechanism |
| 04 | R115336ASY | 2 | Tool Head Mount Assembly |
| 04A | - | 12 | Screw, M8 X 1.25 X 20 90 DEG Flat Countersunk Head Cap, Hex Socket, ASTM F835M, Black Oxide Coated ** |
| 05 | R120336ASY | 2 | Head Assembly, Electric |
| 06 | SEE TABLE A | 1 | Tool Bit and Holder Assembly, Ductile Iron |
| 07 | SEE TABLE A | 1 | Cutoff Module Assembly, 3"-36" Portable Field Groover |
| 07A | R046336MCH | 1 | Cutoff Blade |
| 08 | - | 3 | Screw, M8 X 1.25 X 60 Hex Socket Head Cap, ASME B18.3.1M, ASTM A574M Alloy Steel, Black Oxide Coated |

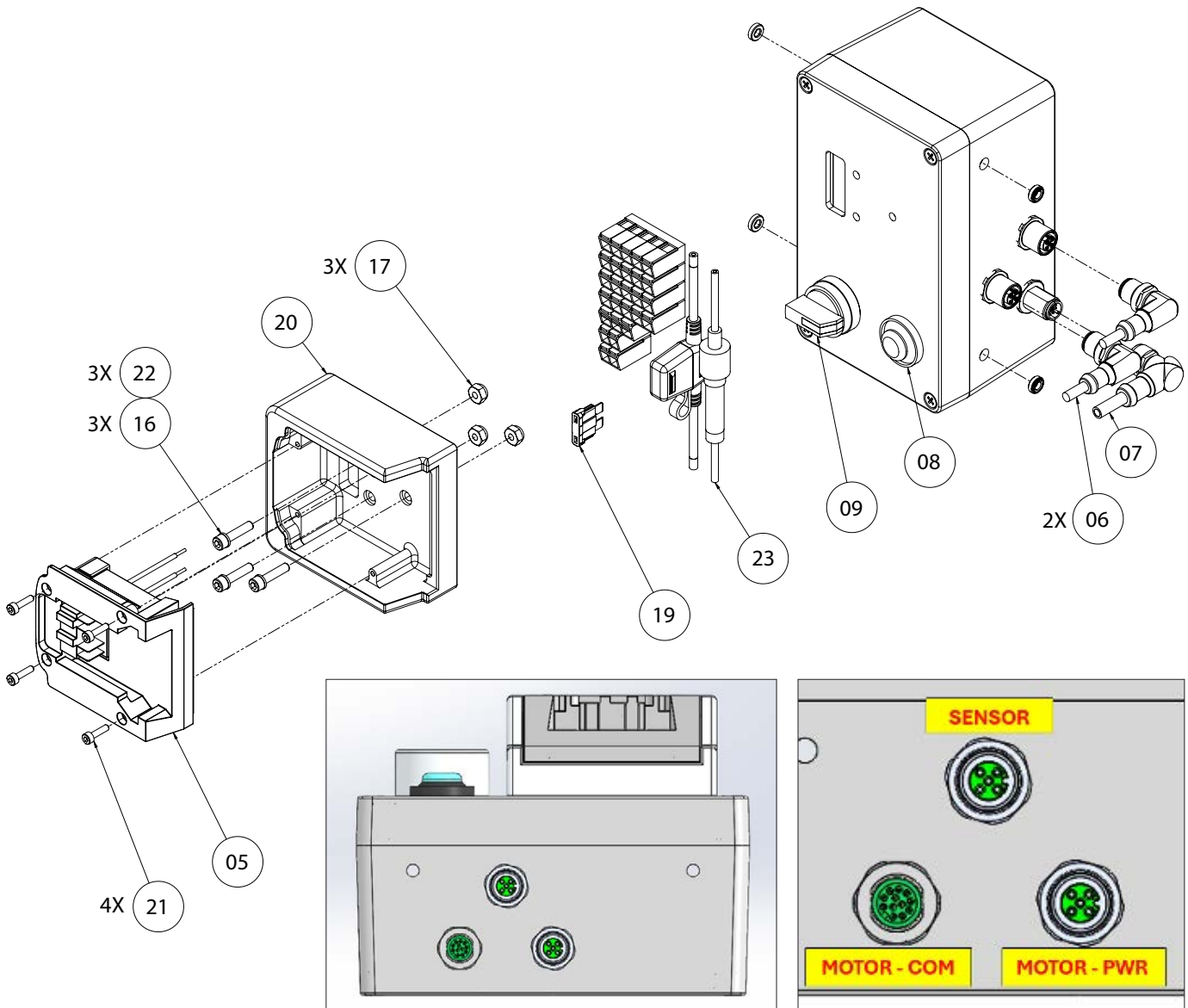
| Item # | Part # | Qty. | Description |
|--------|------------|------|---|
| 09 | - | 3 | Washer, M8, Helical Spring-Lock, Regular, ASME B18.21.2M, Carbon Steel, ASTM F1941 Fe/Zn 3A Clear Zinc Plated |
| 10 | NMSC000160 | 2 | Lifting Eye, M12 X 1.75, 2250 lbs Work Load Limit, Steel, Nylon Coated |
| 11 | R215336ASY | 1 | Electric Motor Assembly 120 VAC |
| 11A | - | 2 | Screw, M10 X 1.5 X 20MM ** |
| 12 | R190336ASY | 1 | Support Stand, 20"-36" Rings |
| 13 | R225336ASY | 1 | Assembly, Setup Gauge, 3"-36" DIPS, Portable Field Cut Groover, CG336 |
| 14 | R135336MCH | 1 | "A" Dimension Gauge, 30"-36" DIPS, Portable Field Cut Groover, CG336 |

** Include In Tool Bag

NOTES:

1. APPLY LOCTITE 271 "THREAD LOCKER RED" TO THE THREADS OF ITEM 8 PRIOR TO ASSEMBLY.
2. See page 10 for motor assembly parts availability.

ENCLOSURE ASSEMBLY, ELECTRIC HEAD CONTROL BOX, 3"-36" PORTABLE FIELD CUT GROOVER, CG336

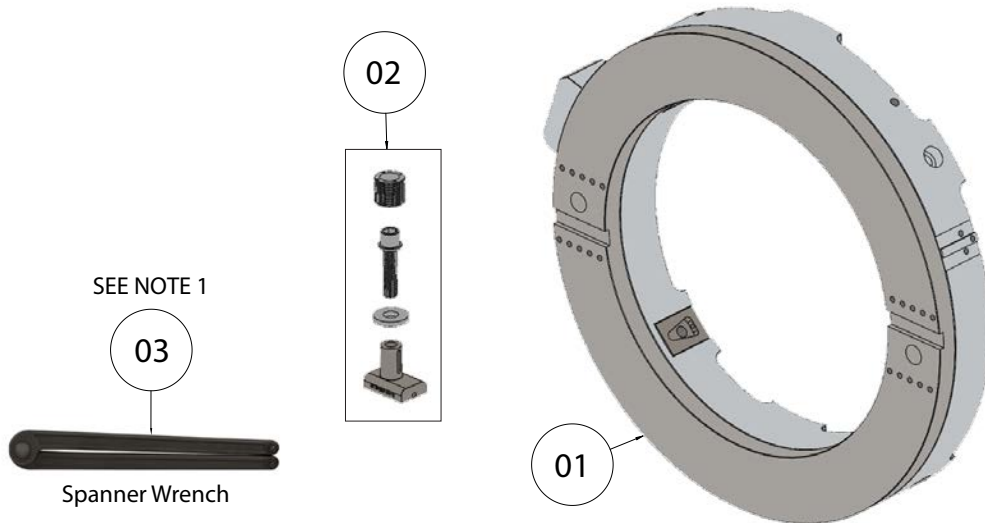


Note: Cable position reference for item 6 (Qty.2) and item 7 (Qty.1).

| Item # | Part # | Qty. | Description |
|--------|------------|------|---|
| 05 | NMSC000164 | 1 | Adapter, Battery, 18VDC, With Low Voltage Cutoff, Plastic Housing, Red |
| 06 | NMSC000176 | 2 | Cable, M12 Right Angle Male, M12 Right Angle Female, 4-Pole, 250 VAC / 300VDC, 4 AMP Maximum Current, 0.3 Meter Length, TPU Orange Jacket, Pur Black Jacket, Brass Nickel Plated Nut, IP67, CE |
| 07 | NMSC000177 | 1 | Cable, M12 A-Code Double Ended, M12 Right Angle Male, M12 Right Angle Female, 12-Pole 30 VAC/VDC Rated Voltage, 1.5 AMP Rated Current, 500mm Length, PUR Black Jacket, Zinc Alloy Nickel Plated |
| 08 | NELC000172 | 1 | Indicator, Single Light, Blue, 10-30 VDC Supply Voltage, PNP Input, 25 mA Current Rating, Wide 180 DEG Field Of View, 4 Wire 2 Meter Cable, Aluminum, Black, IP69K, CE |
| 09 | NELC000180 | 1 | Switch, Selector, 22mm Panel Mount, 3 Position, DPST, 10A, 24VDC, Plastic Housing |
| 16 | - | 3 | Screw, #8-32 X 3/4 Hex Socket Head Cap, ASME B18.3, ASTM A574 Alloy Steel, Black Oxide Coated |

| Item # | Part # | Qty. | Description |
|--------|---------------------------|------|---|
| 17 | - | 3 | Locknut, #8-32 Hex Machine Screw, Nylon Insert, ASME B18.16.6 Style NM, Grade N2, Carbon Steel, ASTM F1941 Fe/Zn 3A Clear Zinc Plated |
| 19 | LITTLEFUSE #0ATO003.MXGLO | 1 | Fuse, 3 AMP, 32VDC, Fast Acting, Class 287, Tin Plated Blades, Clear Plastic Housing |
| 20 | R164336MCH | 1 | Housing, Battery Adapter |
| 21 | - | 4 | Screw, M3 X 0.5 X 12 Hex Socket Head Cap, ASME B18.3.1M, ASTM A574M Alloy Steel, Black Oxide Coated |
| 22 | - | 3 | Washer, #8, Helical Spring-Lock, Regular, ASME B18.21.1 Carbon Steel, ASTM B695 Class 55 Type I Zinc Plated |
| 23 | BUSSMANN #AGC3-10-R | 1 | Fuse, 3/10 AMP, 250 VAC, Fast Acting, Class AGC, Glass, Nickel Plated Brass End Caps |

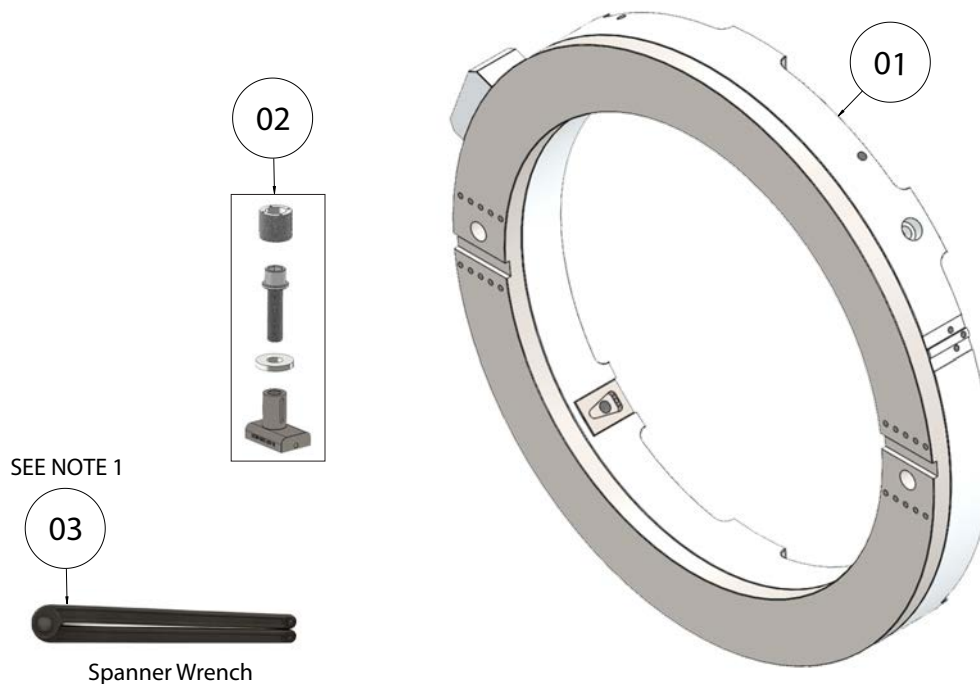
RING ASSEMBLY, 3"-12" PIPE, 3"-36" PORTABLE FIELD CUT GROOVER, CG336



| Item # | Part # | Qty. | Description |
|--------|------------|------|--|
| 01 | R140336ASY | 1 | Ring Assembly, 3"-12" Pipe |
| 02 | NMSC000178 | 4 | Adjusting Base, Pipe Spacer, 3" / 76.2mm Thru 36" / 914.4mm, Portable Field Cut Groover, CG336 |
| 03 | NMSC000132 | 1 | Spanner Wrench, Adjustable, 2.9mm pin dia. |

NOTES:
 1. SPANNER WRENCH REQUIRED FOR ITEM 002 REPLACEMENT. THIS SPANNER WRENCH IS SUPPLIED IN TOOL BAG.

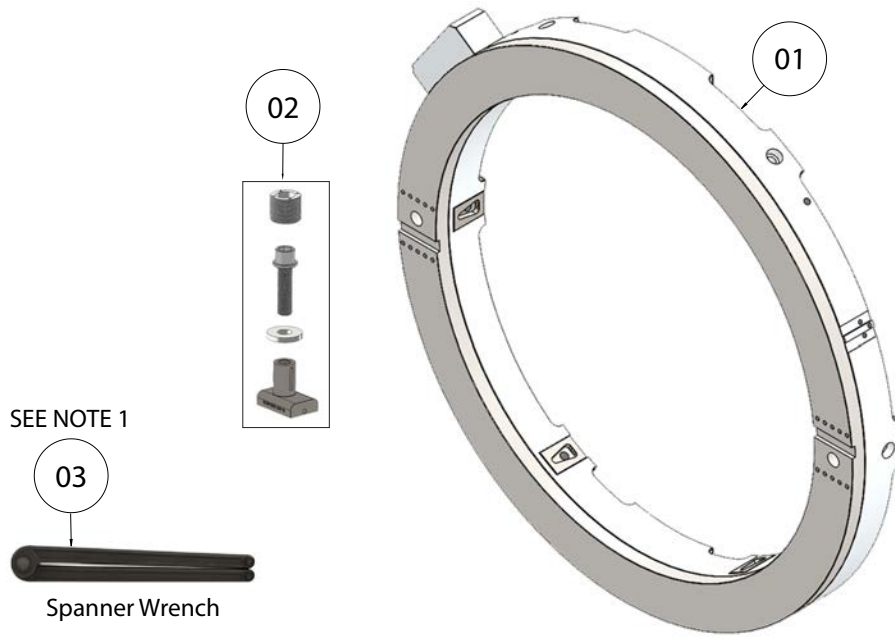
RING ASSEMBLY, 14"-18" PIPE, 3"-36" PORTABLE FIELD CUT GROOVER, CG336



| Item # | Part # | Qty. | Description |
|--------|------------|------|--|
| 01 | R141336ASY | 1 | Ring Assembly, 14"-18" Pipe |
| 02 | NMSC000178 | 4 | Adjusting Base, Pipe Spacer, 3" / 76.2mm Thru 36" / 914.4mm, Portable Field Cut Groover, CG336 |
| 03 | NMSC000132 | 1 | Spanner Wrench, Adjustable, 2.9mm pin dia. |

NOTES:
 1. SPANNER WRENCH REQUIRED FOR ITEM 002 REPLACEMENT. THIS SPANNER WRENCH IS SUPPLIED IN TOOL BAG.

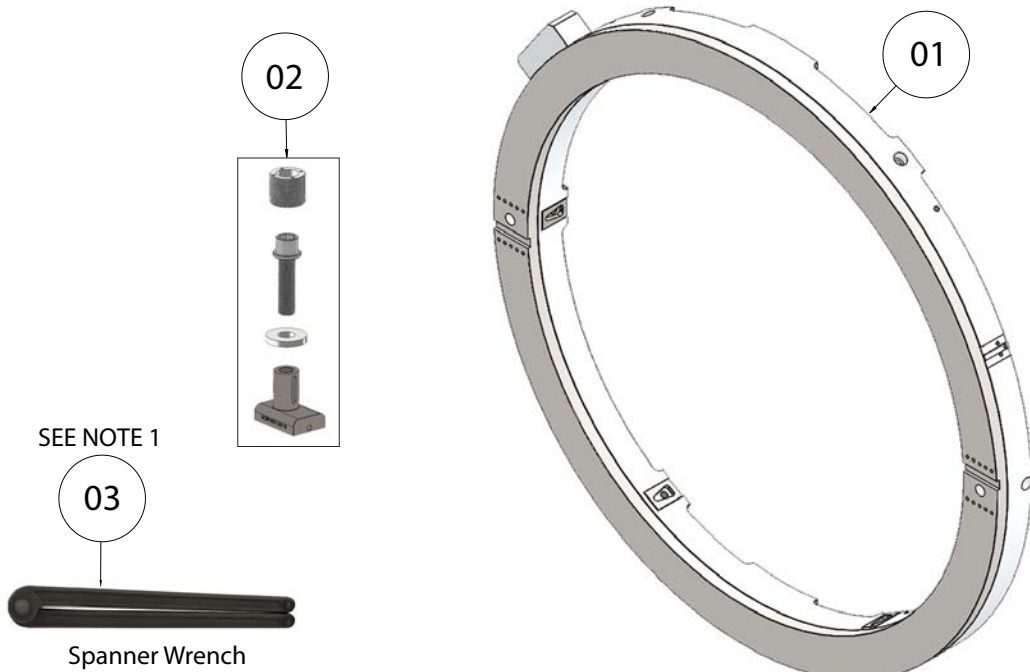
RING ASSEMBLY, 20"-24" PIPE, 3"-36" PORTABLE FIELD CUT GROOVER, CG336



| Item # | Part # | Qty. | Description |
|--------|------------|------|--|
| 01 | R142336ASY | 1 | Ring Assembly, 20"-24" Pipe |
| 02 | NMSC000178 | 6 | Adjusting Base, Pipe Spacer, 3" / 76.2mm Thru 36" / 914.4mm, Portable Field Cut Groover, CG336 |
| 03 | NMSC000132 | 1 | Spanner Wrench, Adjustable, 2.9mm pin dia. |

NOTES:
1. SPANNER WRENCH REQUIRED FOR ITEM 002 REPLACEMENT. THIS SPANNER WRENCH IS SUPPLIED IN TOOL BAG.

RING ASSEMBLY, 30"-36" PIPE, 3"-36" PORTABLE FIELD CUT GROOVER, CG336

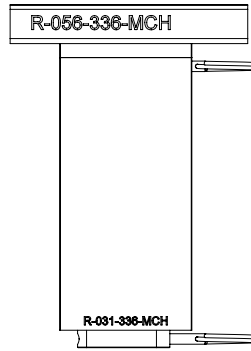
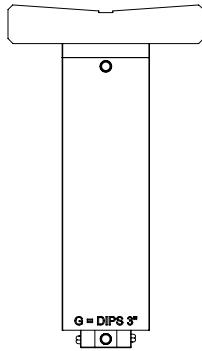
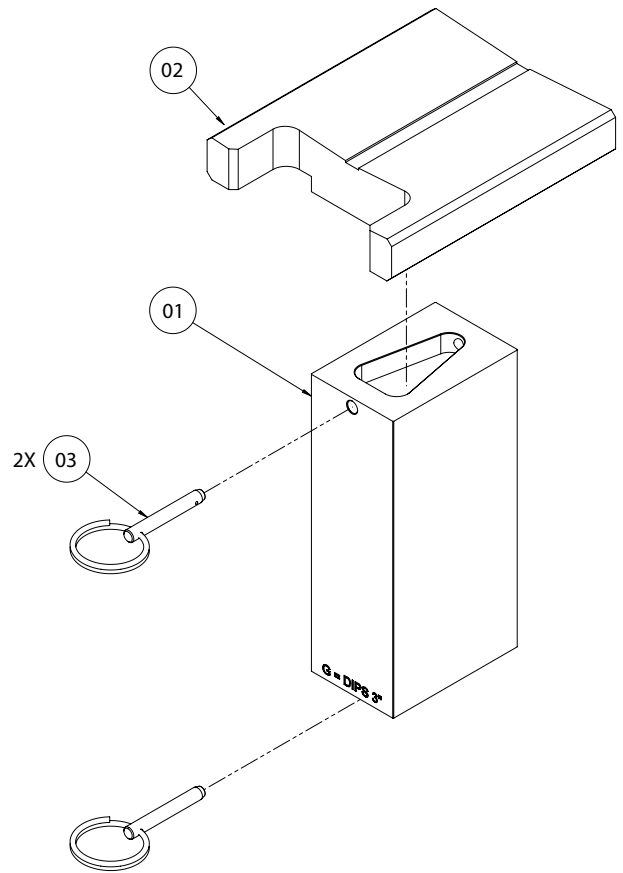


| Item # | Part # | Qty. | Description |
|--------|------------|------|--|
| 01 | R143336ASY | 1 | Ring Assembly, 30"-36" Pipe |
| 02 | NMSC000178 | 6 | Adjusting Base, Pipe Spacer, 3" / 76.2mm Thru 36" / 914.4mm, Portable Field Cut Groover, CG336 |
| 03 | NMSC000132 | 1 | Spanner Wrench, Adjustable, 2.9mm pin dia. |

NOTES:
1. SPANNER WRENCH REQUIRED FOR ITEM 002 REPLACEMENT. THIS SPANNER WRENCH IS SUPPLIED IN TOOL BAG.

**PIPE SPACER ASSEMBLY, 3" / 76.2MM THRU - 36" / 914.4MM
PORTABLE FIELD CUT GROOVER, CG336**

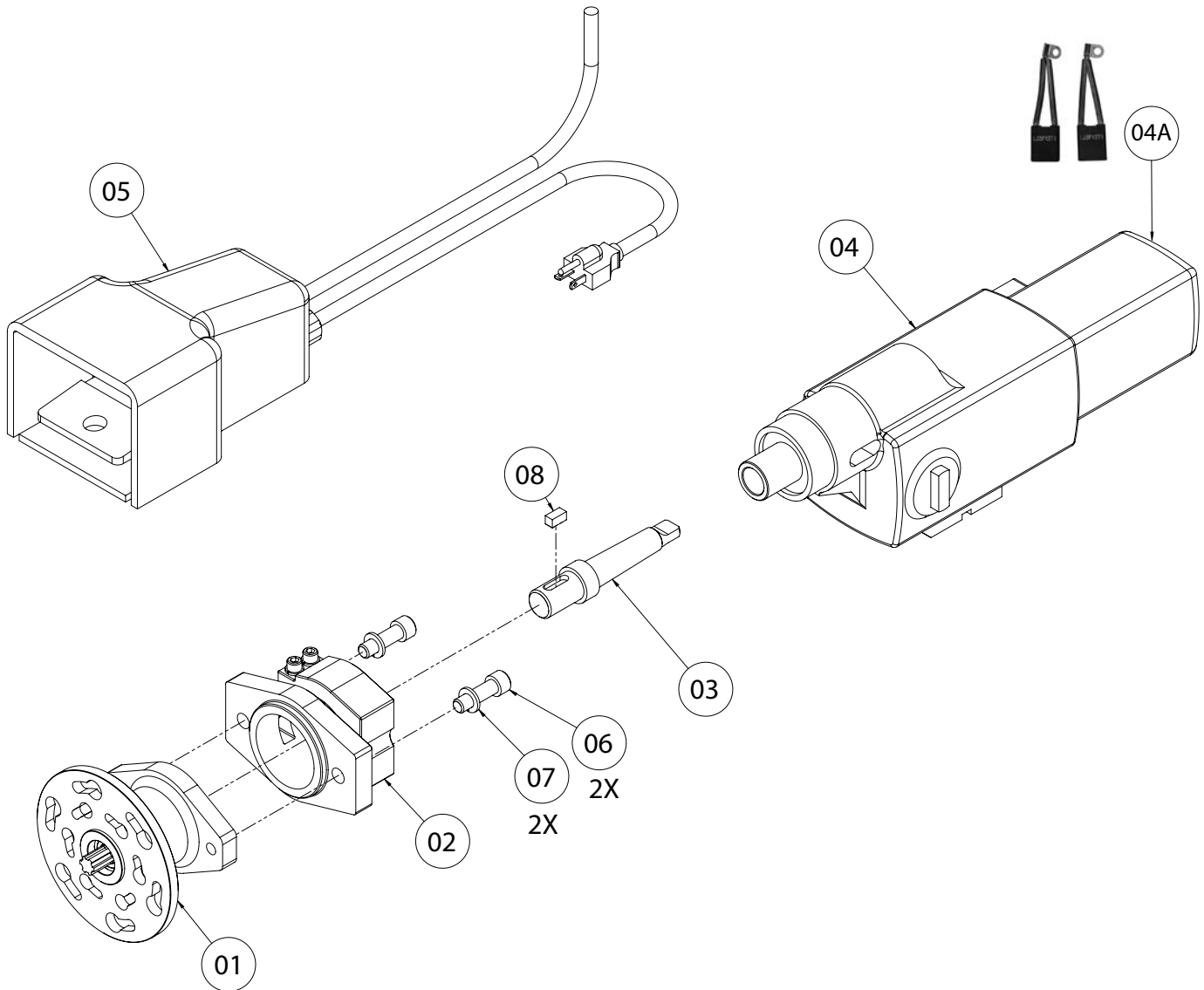
| Table A - Pipe Spacer | | | | | |
|-----------------------|-------------|------------|------------------|--------------------|-----------|
| Qty | Description | Part # | Height | Letter Designation | Pipe Size |
| 1 | Pipe Spacer | R025336MCH | 1/2" / 12.7mm | A | 12" |
| 1 | Pipe Spacer | R026336MCH | 11/16" / 17.5mm | B | 36" |
| 1 | Pipe Spacer | R027336MCH | 1" / 25.4mm | C | 16" |
| 1 | Pipe Spacer | R028336MCH | 1-1/4" / 31.8mm | D | 10" |
| 1 | Pipe Spacer | R029336MCH | 4-1/2" / 114.3mm | E | 4" |
| 1 | Pipe Spacer | R030336MCH | 2-3/8" / 60.3mm | F | 8" |
| 1 | Pipe Spacer | R031336MCH | 4-7/8" / 123.8mm | G | 3" |
| 1 | Pipe Spacer | R032336MCH | 3-3/8" / 85.7mm | H | 6" |
| 1 | Pipe Spacer | R033336MCH | 3-7/8" / 98.4mm | J | 30" |
| 1 | Pipe Spacer | R034336MCH | 3" / 76.2mm | K | 20" |
| 1 | Pipe Spacer | R057336MCH | 7/8" / 22.2mm | L | 24" |
| 1 | Pipe Spacer | R058336MCH | 2" / 50.8mm | M | 14" |



| Item # | Part # | Qty. | Description |
|--------|-------------|------|--|
| 01 | SEE TABLE A | 1 | Pipe Spacer |
| 02 | R056336MCH | 1 | Mounting Base, Pipe Grip 3" / 76.2mm Thru - 36" / 914.4mm |
| 03 | NPIN000016 | 2 | Pin, Quick Release, 3/16 DIA, 1 Usable Length, With Ring Grip And Ball Detent, Steel, Zinc Plated ** |

** Include In Tool Bag

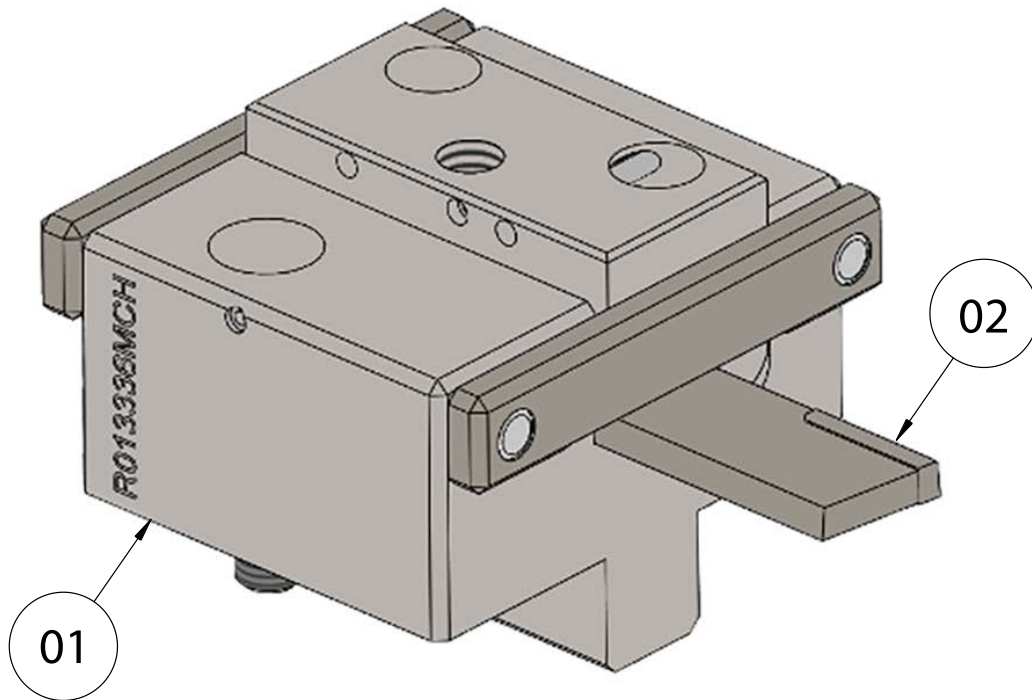
ELECTRIC MOTOR ASSEMBLY, 120VAC, 3"-36" PORTABLE FIELD CUT GROOVER, CG336



| Item # | Part # | Qty. | Description |
|--------|------------|------|---|
| 01 | NELC000175 | 1 | Mount, Motor To Drive Flange Interface, Plain Steel |
| 02 | R240336ASY | 1 | Mount Assembly, Motor |
| 03 | R214336MCH | 1 | Shaft, Motor |
| 04 | NE01000021 | 1 | Motor, Drive Unit, 110V, 20A, Variable Speed With Reverse |
| 04A | NMSC000143 | 2 | Motor Brushes ** |
| 05 | NE03000005 | 1 | Foot Switch Assembly |
| 06 | - | 2 | Screw, M12 X 1.75 X 40 Hex Socket Head Cap, ASME B18.3.1M, ASTM A574M Alloy Steel, Black Oxide Coated |
| 07 | - | 2 | Washer, M12, Helical Spring-Lock, Regular, DIN 127 Type B, Carbon Steel, Black Oxide Coated |
| 08 | - | 2 | Key, Parallel, 5/16 X 5/16 X 5/8, ASME B17.1 Class 1, Carbon Steel, Plain |

** Include In Tool Bag

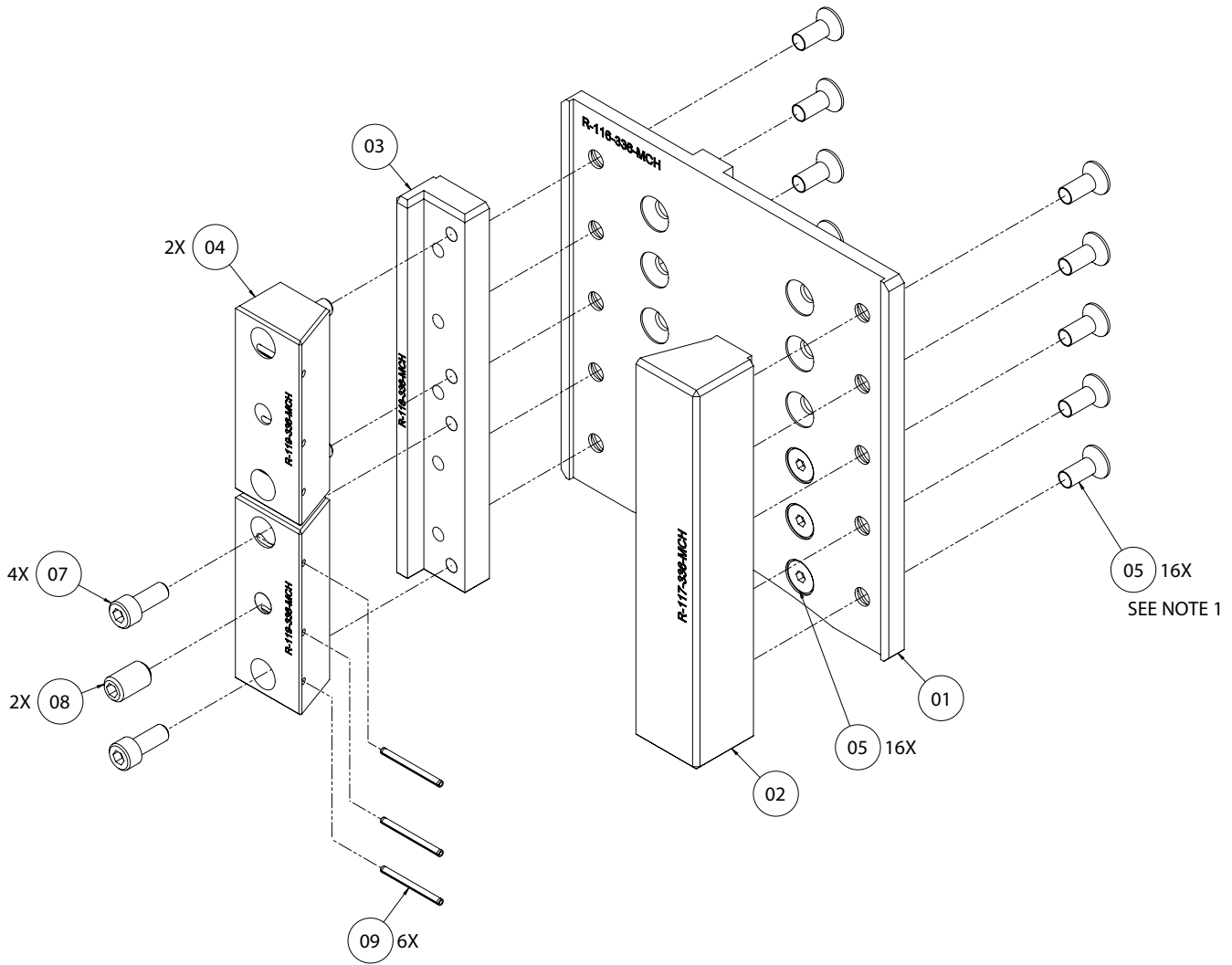
CUTOFF MODULE ASSEMBLY, 3"-36" PORTABLE FIELD GROOVER, CG336



| Qty | Description | Part # | "A" Dimension |
|-----|---------------------------------|------------|---------------|
| 1 | Cutoff Module, 3"-6" Flexible | R045336A08 | 0.750" |
| 1 | Cutoff Module, 8" Flexible | R045336A09 | 0.875" |
| 1 | Cutoff Module, 10"-12" Flexible | R045336A10 | 0.938" |
| 1 | Cutoff Module, 14" Flexible | R045336A11 | 0.938" |
| 1 | Cutoff Module, 16"-24" Flexible | R045336A12 | 1.188" |
| 1 | Cutoff Module, 30"-36" Flexible | R045336A13 | 1.375" |
| 1 | Cutoff Module, 3"-6" Rigid | R045336A02 | 0.840" |
| 1 | Cutoff Module, 8" Rigid | R045336A03 | 0.950" |
| 1 | Cutoff Module, 10"-12" Rigid | R045336A04 | 1.015" |
| 1 | Cutoff Module, 14" Rigid | R045336A05 | 0.938" |
| 1 | Cutoff Module, 16"-24" Rigid | R045336A06 | 1.340" |
| 1 | Cutoff Module, 30"-36" Rigid | R045336A07 | 1.625" |

| Item # | Part # | Qty. | Description |
|--------|-------------|------|--|
| 01 | SEE TABLE A | 1 | Cutoff Module |
| 02 | R046336MCH | 1 | Cutoff Blade, 3"-36" Portable Field Groover, CG336 |

TOOL HEAD MOUNT ASSEMBLY, 3"-36" PORTABLE FIELD CUT GROOVER, CG336



| Item # | Part # | Qty. | Description |
|--------|------------|------|---|
| - | R115336ASY | 1 | Tool Head Mount Assembly, 3"-36" Portable Field Cut Groover, CG336 |
| 01 | * | 1 | Head Mounting Plate |
| 02 | * | 1 | Side Block, Fixed |
| 03 | * | 1 | Side Clamp, Block A |
| 04 | * | 2 | Clamp Block B |
| 05 | * | 16 | Screw, M8 X 1.25 X 20 90 DEG Flat Countersunk Head Cap, Hex Socket, ASTM F835M, Black Oxide Coated ** |
| 07 | * | 4 | Screw, M8 X 1.25 X 20 Hex Socket Head Cap, ASME B18.3.1M, ASTM A574M Alloy Steel, Black Oxide Coated |
| 08 | * | 2 | Screw, M12 X 1.75 X 20 Hex Socket Set, Flat Point, ASTM F912M, Black Oxide Coated |
| 09 | * | 6 | Pin, 3mm X 36mm Slotted Spring, Type B, Carbon Steel, Plain |

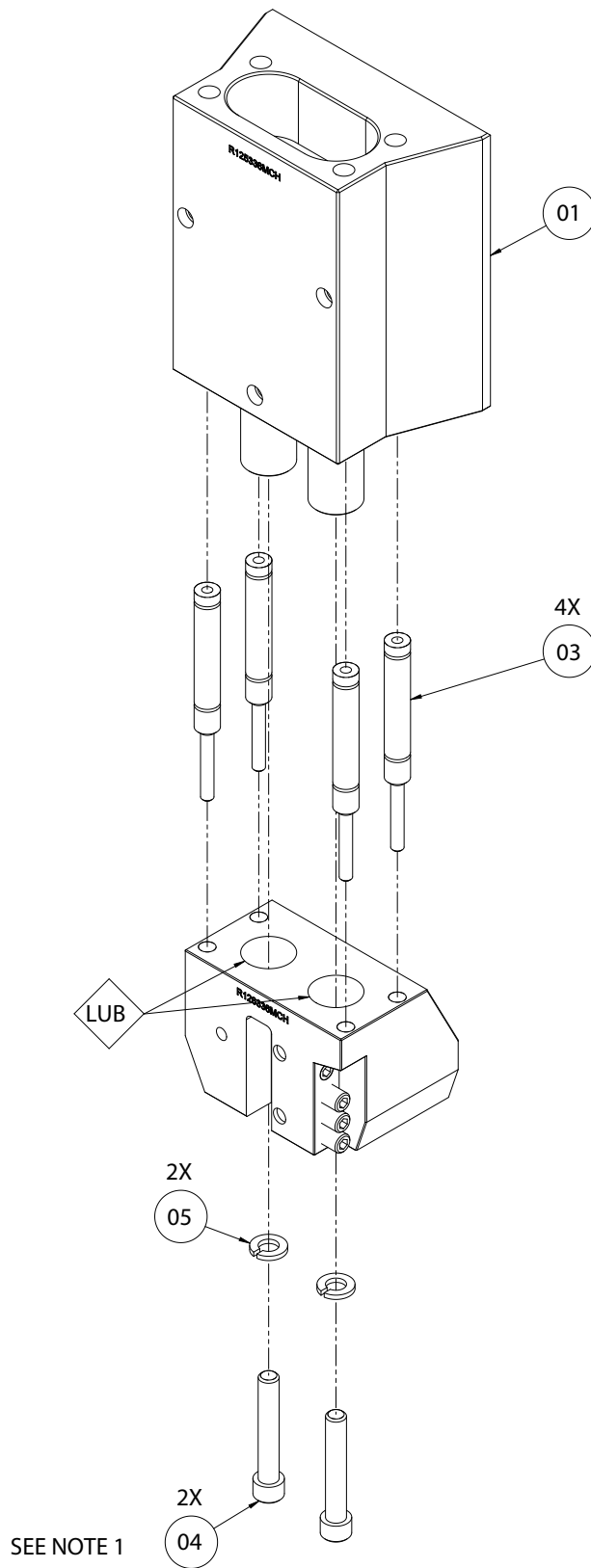
* Included in assembly. Not available for individual sale.

** Include In Tool Bag

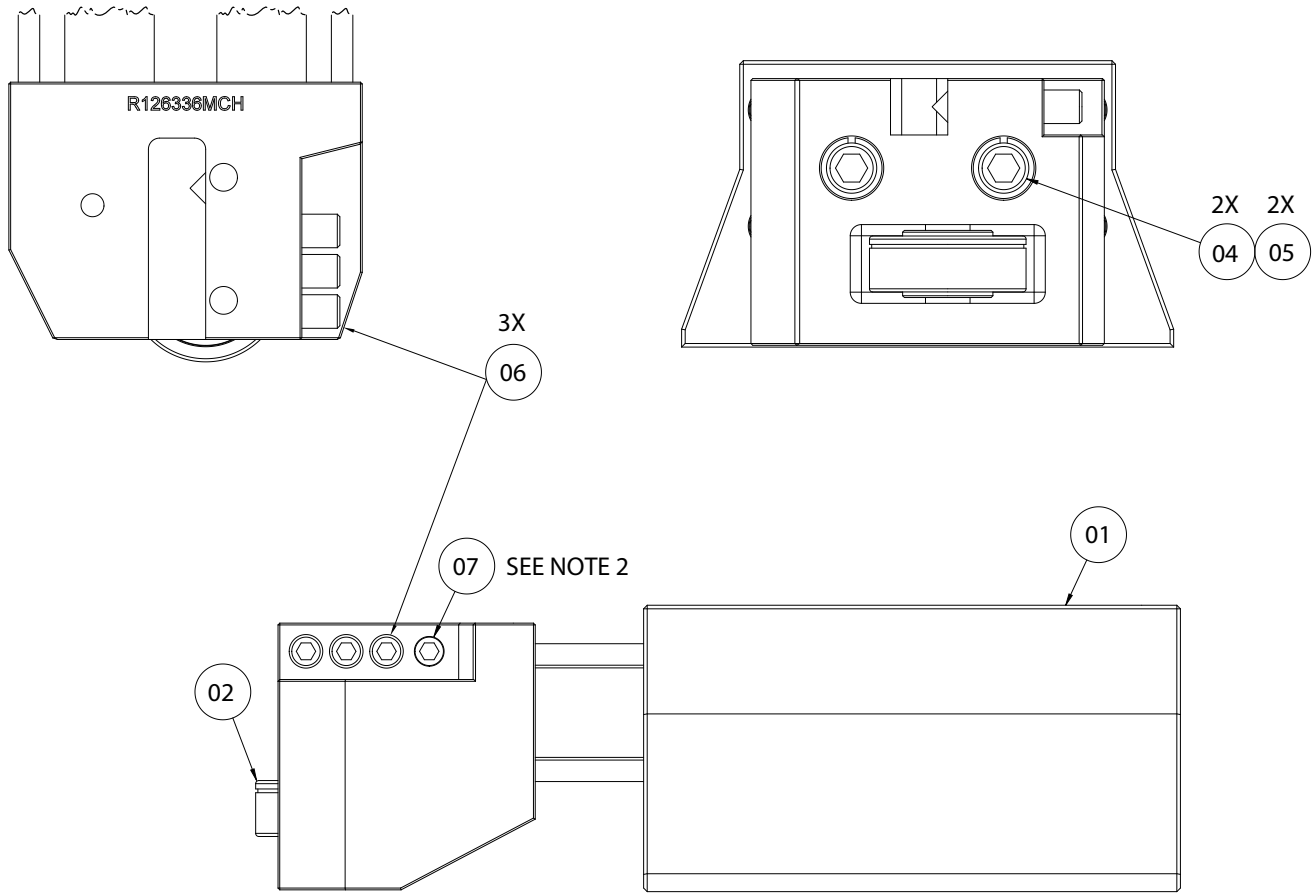
NOTES:

1. APPLY LOCTITE 242 "THREADLOCKER BLUE" TO THE THREADS OF ITEM 5 PRIOR TO ASSEMBLY.

HEAD ASSEMBLY, BASE, 3"-36" PORTABLE FIELD CUT GROOVER, CG336



HEAD ASSEMBLY, BASE, 3"-36" PORTABLE FIELD CUT GROOVER, CG336 - CONTINUED



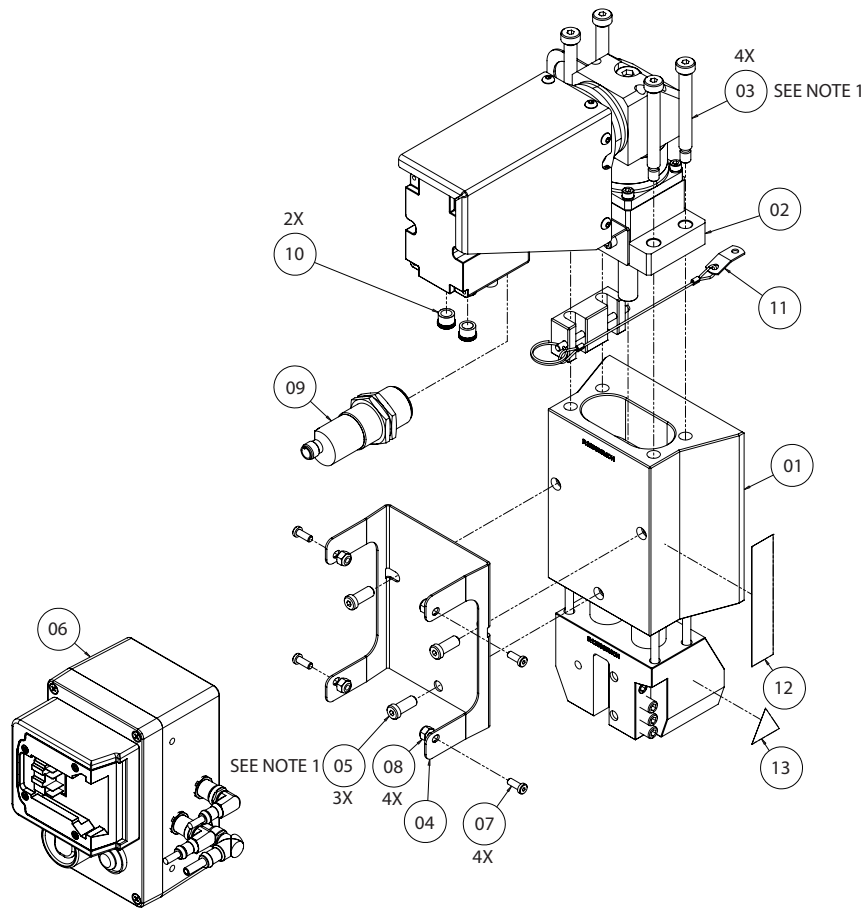
| Item # | Part # | Qty. | Description |
|--------|------------|------|---|
| 01 | R155336ASY | 1 | Head Assembly, Base |
| 02 | NMSC000128 | 1 | Bearing, Ball, 0.500 ID X 1.750 OD X 0.625 Width, Single Row, High Load, Double Shielded, 0.750 Inner Ring, Alloy Steel |
| 03 | NMSC000129 | 4 | Spring, Gas, Compression, 1.50 Stroke, .24 Rod, M6 X 1 Female Threaded Ends, 121 LBS Force, Steel, Painted |
| 04 | - | 2 | Screw, 3/8-16 X 2-1/4 Hex Socket Head Cap, ASME B18.3, ASTM A574 Alloy Steel, Black Oxide Coated |
| 05 | - | 2 | Washer, 3/8, Helical Spring-Lock, Regular, Carbon Steel, Clear Zinc Plated |
| 06 | NSCR000075 | 3 | Screw, 3/8-24 X 1-1/2 Hex Socket Set, Oval Point, ASME B18.3, ASTM F912 Alloy Steel, Black Oxide Coated ** |
| 07 | NSCR000076 | 1 | Screw, 3/8-24 X 1-1/4 Hex Socket Set, Cone Point, ASME B18.3, ASTM F912 Alloy Steel, Black Oxide Coated ** |

** Include In Tool Bag

NOTES:

1. APPLY LOCTITE 271 "THREAD LOCKER RED" TO THE THREADS OF ITEM 4 PRIOR TO ASSEMBLY.
2. APPLY LOCTITE 242 "THREADLOCKER BLUE" TO THE THREADS OF ITEM 3 PRIOR TO ASSEMBLY.

HEAD ASSEMBLY, ELECTRIC, 3"-36" PORTABLE FIELD CUT GROOVER, CG336

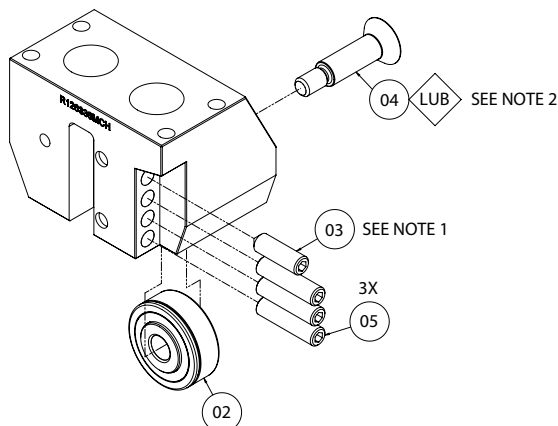


| Item # | Part # | Qty. | Description |
|--------|------------|------|---|
| 01 | R155336ASY | 1 | Head Assembly, Base |
| 02 | R123336ASY | 1 | End Plate Assembly, Electric |
| 03 | - | 4 | Screw, 3/8 X 2-3/4 Hex Socket Head Shoulder, Alloy Steel, Phosphate Coated |
| 04 | R161336MCH | 1 | Bracket, Electric Head Control Box |
| 05 | - | 3 | Screw, 5/16-18 X 3/4 Hex Socket Low Head Cap, ASME B18.3, ASTM A574 Alloy Steel, Black Oxide Coated |
| 06 | R160336ASY | 1 | Enclosure Assembly, Electric Head Control Box |
| 07 | - | 4 | Screw, #10-32 X 1/2 Hex Socket Low Head Cap, ASME B18.3, ASTM A574 Alloy Steel, Black Oxide Coated |
| 08 | - | 4 | Locknut, #10-32 Hex Machine Screw, Nylon Insert, ASME B18.16.6 Style NM, Grade N2 Carbon Steel, ASTM F1941 Fe/Zn 3A Clear Zinc Plated |

| Item # | Part # | Qty. | Description |
|--------|------------|------|---|
| 09 | NELC000178 | 1 | Sensor, Inductive Proximity, Flush Mount, 30mm Sensing Range, Extended Sensing Distance, PNP N.O. Output Type, 3-Wire, 10-30 VDC Operating Voltage, 200 mA Load Current, 1500Hz, 4-Pole M12 Connection, IP67, CE, Nickel Plated Brass |
| 10 | NMSC000203 | 2 | Cap, Protective, M12, For Junction Block, Nylon Plastic, Black |
| 11 | R235336ASY | 1 | Assembly, Locking Bar |
| 12 | 21266 | 1 | Warning Label, Tool Head |
| 13 | 21276 | 1 | Pinch Point Label, Tool Head |

NOTES:
 1. APPLY LOCTITE 242 "THREADLOCKER BLUE" TO THE THREADS OF ITEM 3 AND ITEM 5 PRIOR TO ASSEMBLY.

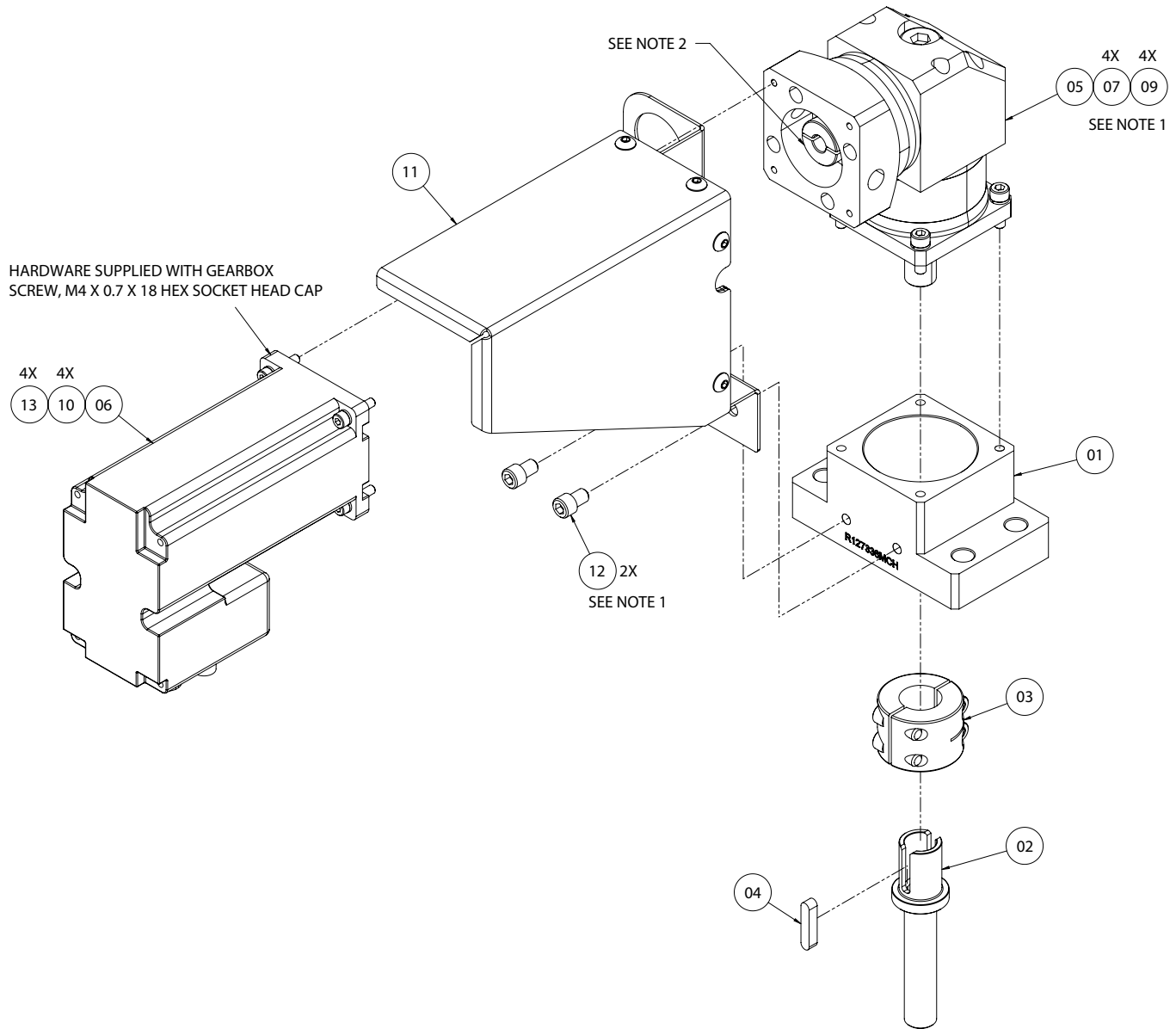
MOTION HEAD ASSEMBLY, ELECTRIC, 3"-36" PORTABLE FIELD CUT GROOVER, CG336



| Item # | Part # | Qty. | Description |
|--------|------------|------|---|
| 02 | NMSC000128 | 1 | Bearing, Ball, 0.500 ID X 1.750 OD X 0.625 Width, Single Row, High Load, Double Shielded, 0.750 Inner Ring, Alloy Steel |
| 03 | - | 1 | Screw, 3/8-24 X 1-1/4 Hex Socket Set, Cone Point, ASME B18.3, ASTM F912 Alloy Steel, Black Oxide Coated ** |
| 04 | - | 1 | Screw, 1/2 X 1-1/4 Flat Hex Socket Head Shoulder, 3/8-16 Thread, 18-8 Stainless Steel, Plain |
| 05 | - | 3 | Screw, 3/8-24 X 1-1/2 Hex Socket Set, Oval Point, ASME B18.3, ASTM F912 Alloy Steel, Black Oxide Coated ** |

** Include In Tool Bag
 NOTES:
 1. APPLY LOCTITE 242 "THREADLOCKER BLUE" TO THE THREADS OF ITEM 3 PRIOR TO ASSEMBLY.
 2. APPLY LOCTITE 638 "JOINT LOCKER GREEN" TO THE THREADS OF ITEM 4 PRIOR TO ASSEMBLY.

END PLATE ASSEMBLY, ELECTRIC, 3"-36" PORTABLE FIELD CUT GROOVER, CG336



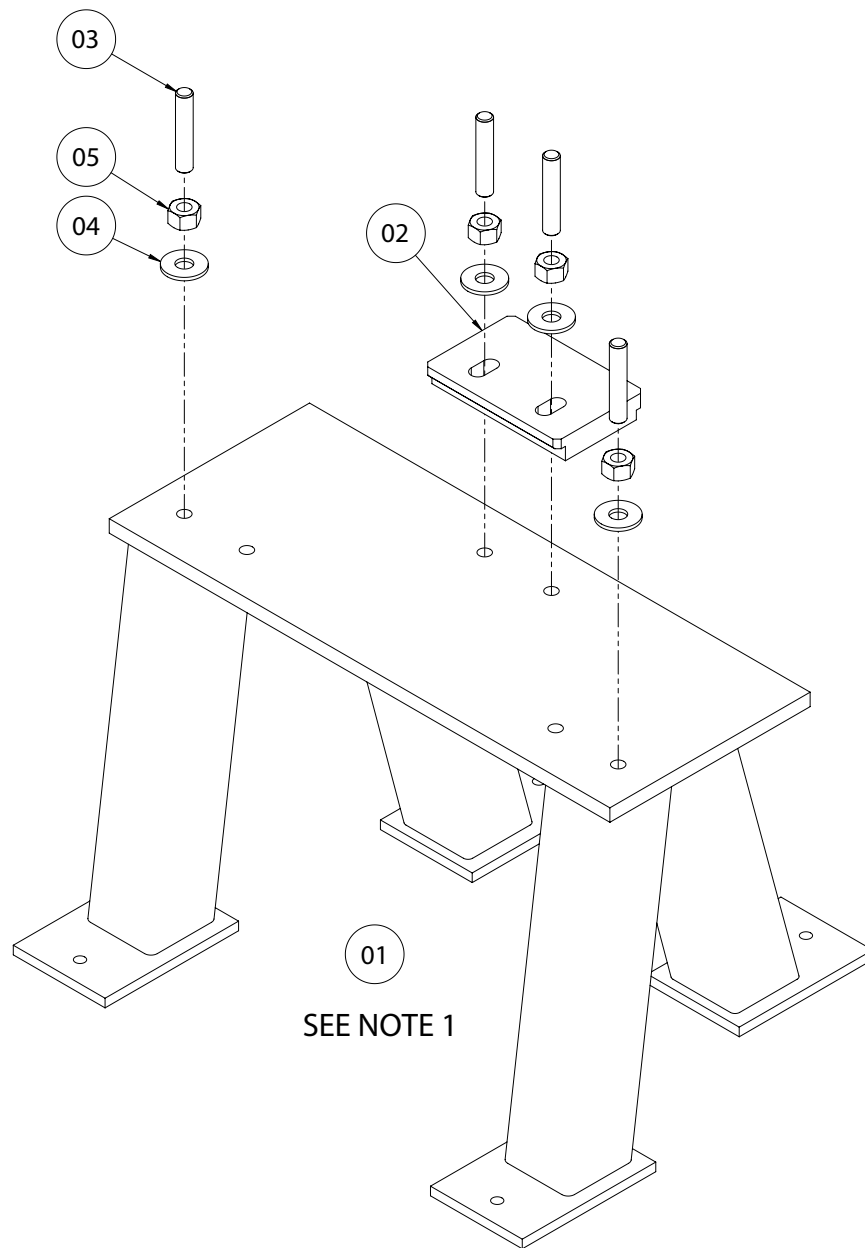
| Item # | Part # | Qty. | Description |
|--------|------------|------|---|
| 01 | R127336MCH | 1 | Base, End Plate Assembly, Electric |
| 02 | R128336MCH | 1 | Coupler, Linear Motion, Electric |
| 03 | NMSC000204 | 1 | Shaft Collar, Two-Piece, 0.750 Bore, 1.063 Width, 1.500 OD, Carbon Steel, Black Oxide |
| 04 | NKEY000001 | 1 | Key, Machine With Rounded Ends, Oversized, 5mm X 5mm X 25mm, Carbon Steel, Plain |
| 05 | NMSC000205 | 1 | Gearbox, Right Angle Planetary 14MM Output Shaft |
| 06 | NELC000179 | 1 | Motor, Integrated Stepper, 51200 Steps Per Revolution, NEMA 24 Frame, 12VDC - 70VDC, 2.4 NM Output Torque, Programmed for CG336 |
| 07 | - | 4 | Screw, M5 X 0.8 X 16 Hex Socket Head Cap, ASME B18.3.1M, ASTM A574M Alloy Steel, Black Oxide Coated |
| 09 | - | 4 | Washer, M5, Helical Spring-Lock, Regular, Carbon Steel, Yellow Zinc Plated |

| Item # | Part # | Qty. | Description |
|--------|------------|------|---|
| 10 | - | 4 | Washer, M4, Helical Spring-Lock, Regular, Carbon Steel, Yellow Zinc Plated |
| 11 | R230336ASY | 1 | Assembly, Motor Guard |
| 12 | - | 2 | Screw, 1/4-20 X 3/8 Hex Socket Head Cap, ASME B18.3, ASTM A574 Alloy Steel, Black Oxide Coated |
| 13 | - | 4 | Screw, M4 X 0.7 X 18 Hex Socket Head Cap, ASME B18.3.1M, ASTM A574M Alloy Steel, Black Oxide Coated |

NOTES:

1. APPLY LOCTITE 242 "THREADLOCKER BLUE" TO THE THREADS OF ITEM 7 AND ITEM 12 PRIOR TO ASSEMBLY.
2. ROTATE INTERNAL CLAMP COLLAR SO FASTENERS ALIGN WITH THE ACCESS HOLES TO ALLOW THE GEARBOX COUPLER TO BE TIGHTENED ON THE MOTOR SHAFT.

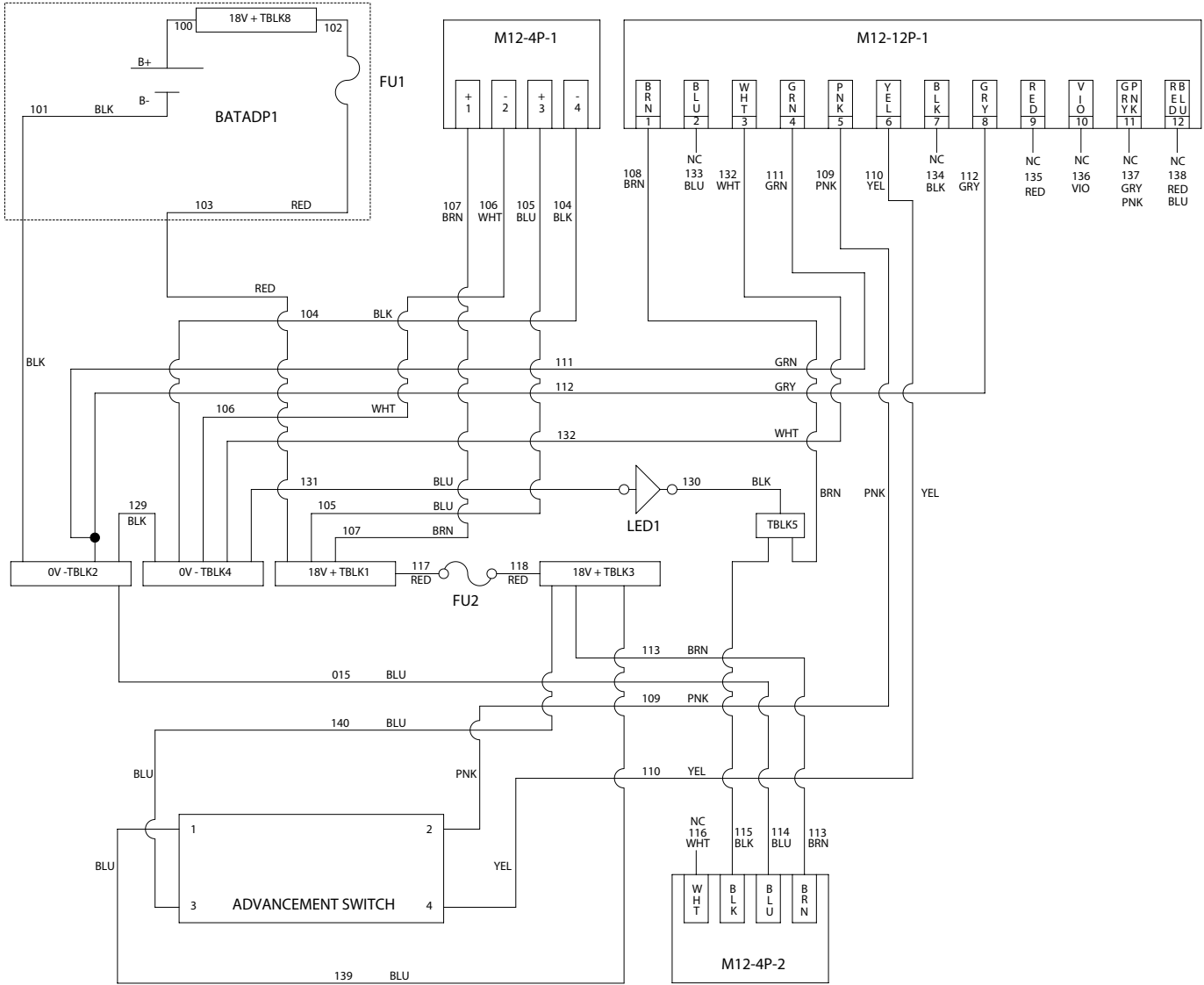
PLATFORM ASSEMBLY, 3"-36" PORTABLE FIELD CUT GROOVER, CG336



| Item # | Part # | Qty. | Description |
|--------|------------|------|--|
| 01 | R195336ASY | 1 | Platform, 3"-36" Portable Field Cut Groover |
| 02 | R189336PNT | 1 | Locking Clamp, Platform Assembly |
| 03 | - | 4 | Stud, 3/4-10 X 4 Continuous Thread, ASME B18.31.2, ASTM A593 Alloy Group 2 Condition CW Stainless Steel, Plain |
| 04 | - | 4 | Washer, 3/4 Nominal, Plain, 0.812 X 2.000 X 0.148, ASME B18.21.1, ASTM F436 Type 1 Carbon Steel, ASTM B695 Class 55 Type I Zinc Plated |
| 05 | - | 4 | Nut, 3/4-10 Heavy Hex, ASME B18.2.2, ASTM A563 Grade A Carbon Steel, Plain |

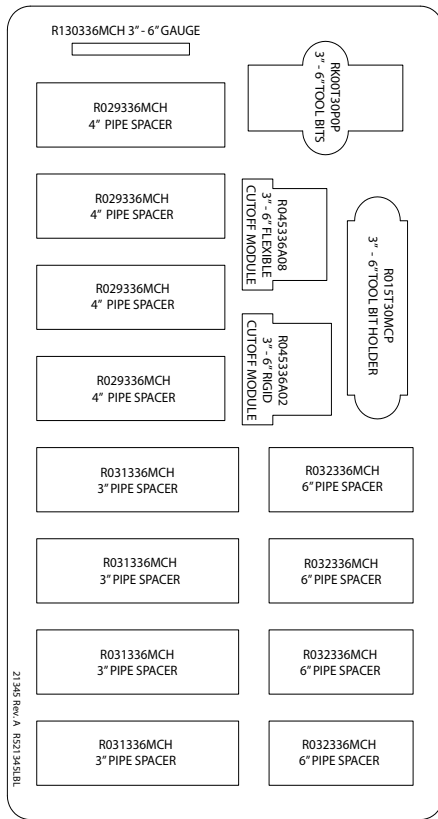
NOTES:
1. ITEM 1 INCLUDES ITEMS 2-5.

ELECTRICAL SCHEMATIC, 3"- 36" PORTABLE FIELD CUT GROOVER. CG336

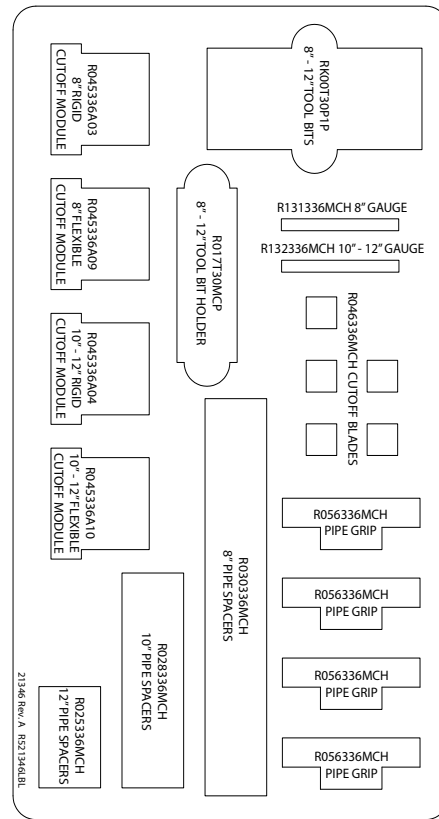


FOAM CUTOUT LOCATION LABELS, 3" – 36" PORTABLE FIELD CUT GROOVER, CG336

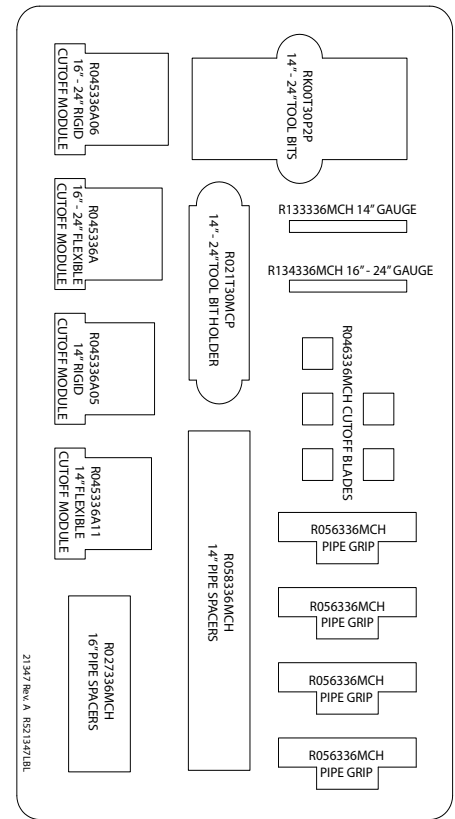
3" – 6" PLASTIC CASE LAYOUT



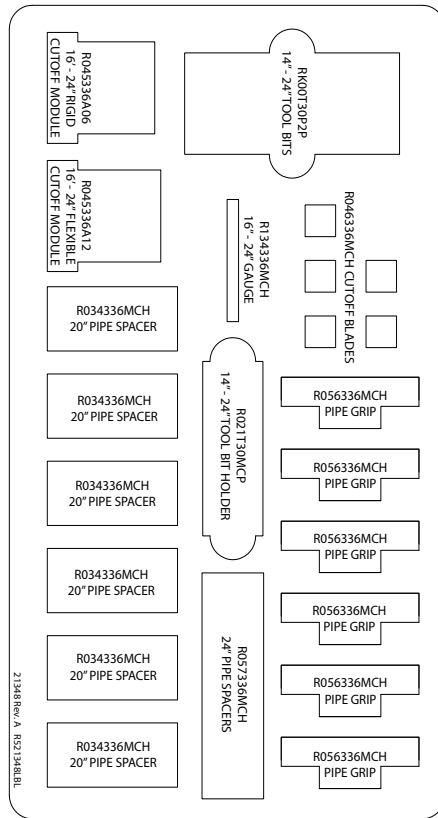
8" – 12" PLASTIC CASE LAYOUT



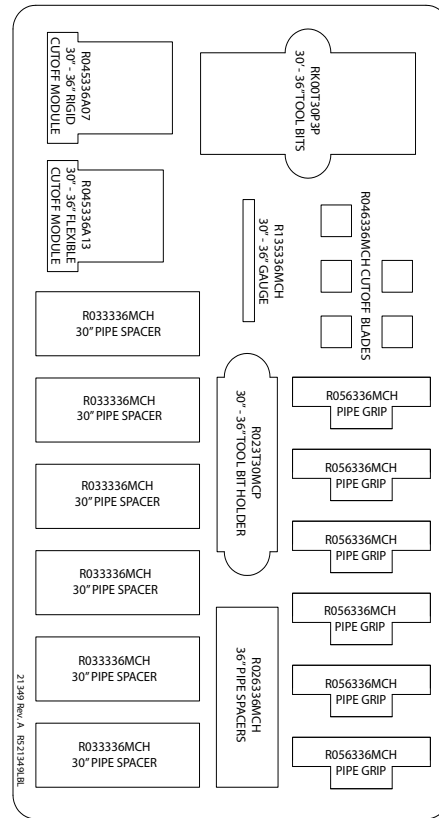
14" – 18" PLASTIC CASE LAYOUT



20" – 24" PLASTIC CASE LAYOUT



30" – 36" PLASTIC CASE LAYOUT



**CG336 Field Cut Groover for 3 – 36-inch
Ductile Iron Pipe**

For complete contact information, visit victaulic.com

RP-CG336 21370 REV A UPDATED 02/2025 RPL0336000

VICTAULIC IS A REGISTERED TRADEMARK OF VICTAULIC COMPANY AND/OR ITS AFFILIATED ENTITIES IN THE UNITED STATES AND/OR OTHER COUNTRIES. © 2025 VICTAULIC COMPANY. ALL RIGHTS RESERVED.

