
RG1210 Roll Grooving Tool



OGS-200

PARTS ORDERING INFORMATION

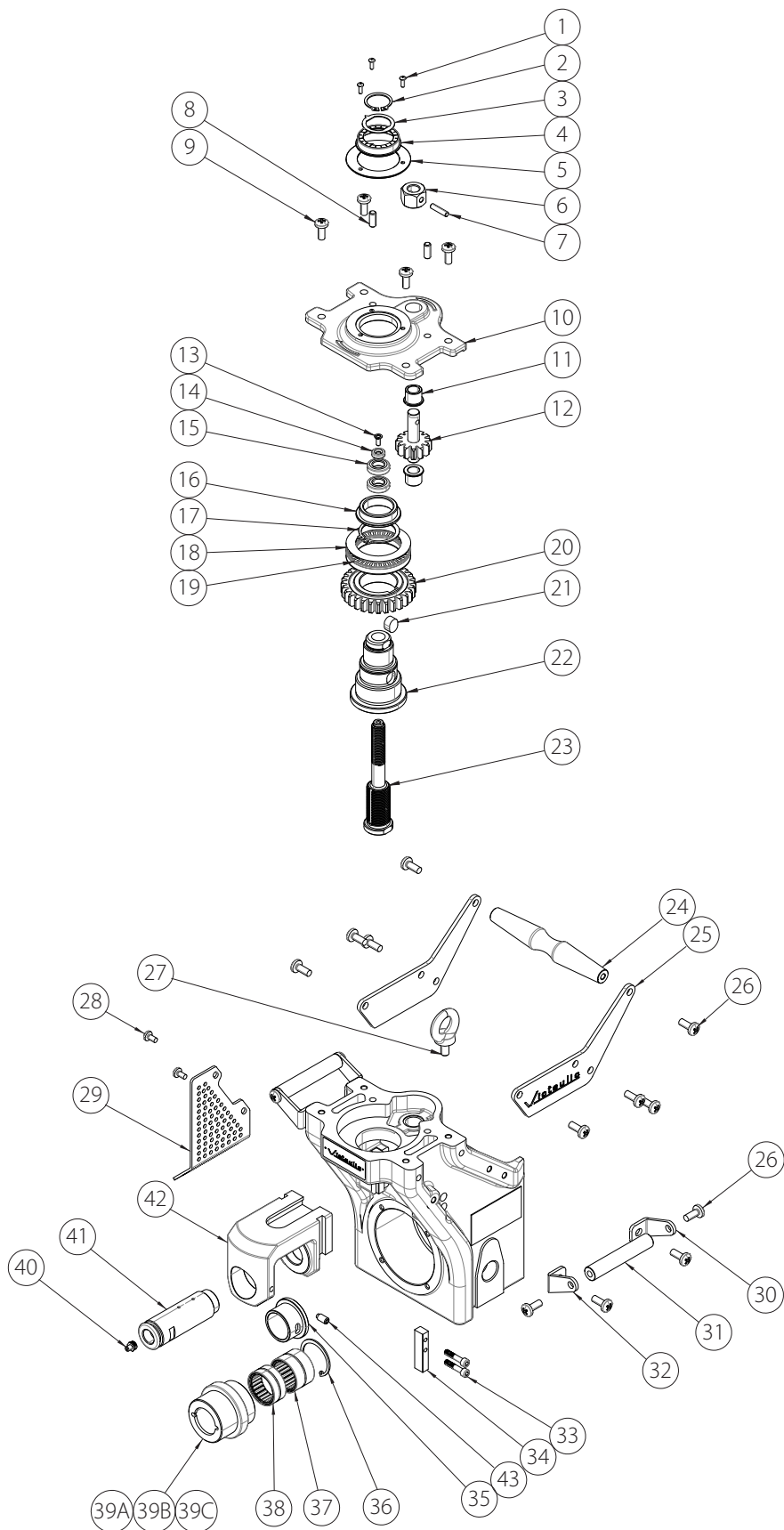
When ordering parts, the following information is necessary for Victaulic to process the order promptly:

1. Tool Model Number – RG1210
2. Tool Serial Number – The Serial Number can be found on the side of the tool.
3. Quantity*, Item Number, Part Number, Description
4. Where to send the part(s) – Company Name and Address
5. To whose attention to send the part(s)
6. Purchase Order Number

Parts may be ordered from your nearest Victaulic Sales Office.

* Quantity given in **Qty.** column indicates total number of pieces required per tool. Value of "A/R" indicates "As Required" which may differ based on usage and environment.

RG1210 BODY UPPER ASSEMBLIES



RG1210 BODY UPPER ASSEMBLIES (CONTINUED)

DEPTH SCALE ASSEMBLY

Item #	Part #	Qty.	Description
	R000121DSA	1	Depth Scale Assembly
1	*	3	Screw Socket Cap M4 x 6
4	*	1	Dial
5	*	1	Cover Plate

* Included in assembly. Not available for individual sale.

FEED COVER ASSEMBLY

Item #	Part #	Qty.	Description
	R000121FCA	1	Feed Cover Assembly
8	*	2	Parallel Pin Ø8 x 20
9	*	4	Pan Head Screw w/ Cross Recess M8 x 20
10	*	1	Up Cover

* Included in assembly. Not available for individual sale.

FEED GEAR ASSEMBLY

Item #	Part #	Qty.	Description
	R000121FGA	1	Feed Gear Assembly
11	*	2	Bushing
12	*	1	Gear
16	*	1	Bushing
17	*	1	Circlip for Shaft
18	*	2	Thrust Washer AS5578
19	*	1	Thrust Needle Bearing AXK5578
20	*	1	Gear
21	*	2	Rectangular Key 14 x 9 x 16

* Included in assembly. Not available for individual sale.

DEPTH ADJUSTER ASSEMBLY

Item #	Part #	Qty.	Description
	R000121DAA	1	Depth Adjuster Assembly
13	*	1	Hex Socket Countersunk Head Screw M5 x 10
14	*	1	Collar
15	*	2	Depth Adjuster

* Included in assembly. Not available for individual sale.

DRIVE NUT ASSEMBLY

Item #	Part #	Qty.	Description
	R000121DNA	1	Drive Nut Assembly
2	*	1	Circlip for Shaft
3	*	1	Depth Arrow Ring
22	*	1	Feeding Nut
23	*	1	Feeding Screw

* Included in assembly. Not available for individual sale.

HANDLE ASSEMBLY

Item #	Part #	Qty.	Description
	R000121HLA	1	Handle Assembly
24	*	1	Lifting Handle
25	*	2	Plate
26	*	16	Pan Head Screw w/ Cross Recess M8 x 15
30	*	2	Corner Bracket-1
31	*	2	Side Handle
32	*	2	Corner Bracket-2

* Included in assembly. Not available for individual sale.

GIB ASSEMBLY

Item #	Part #	Qty.	Description
	R000121GAS	1	Gib Assembly
33	*	4	Hex Socket Head Cap Screw M6 x 35
34	*	2	Gib

* Included in assembly. Not available for individual sale.

UPPER ROLL GUARD ASSEMBLY

Item #	Part #	Qty.	Description
	R000121URG	1	Upper Roll Guard Assembly
28	*	2	Pan Head Screw w/ Cross Recess M6 x 16
29	*	1	Tool Head Guard

* Included in assembly. Not available for individual sale.

UPPER ROLL SHAFT ASSEMBLY

Item #	Part #	Qty.	Description
	R000121URS	1	Upper Roll Shaft Assembly
40	*	1	Lubricating Fitting Straight M10 x 1
41	*	1	Upper Roll Shaft

* Included in assembly. Not available for individual sale.

UPPER ROLL CARRIAGE ASSEMBLY

Item #	Part #	Qty.	Description
	R000121URC	1	Upper Roll Carriage Assembly
35	*	1	Upper Roll Bushing
42	*	1	Slide
43	*	1	Dog Point Set Screw M8 x 1.25 x 15

* Included in assembly. Not available for individual sale.

2-3 INCH UPPER ROLL ASSEMBLY

Item #	Part #	Qty.	Description
	R9S2121U03	1	2-3 Inch Upper Roll Assembly
36	*	1	Retaining Ring for Bore
37	*	1	Needle Bearing NK35/30
38	*	1	Needle Bearing NK35/20
39A	*	1	2-3 Inch Upper Roll

* Included in assembly. Not available for individual sale.

4-6 INCH UPPER ROLL ASSEMBLY

Item #	Part #	Qty.	Description
	R9S4121U06	1	4-6 Inch Upper Roll Assembly
36	*	1	Retaining Ring for Bore
37	*	1	Needle Bearing NK35/30
38	*	1	Needle Bearing NK35/20
39B	*	1	4-6 Inch Upper Roll

* Included in assembly. Not available for individual sale.

8 INCH UPPER ROLL ASSEMBLY

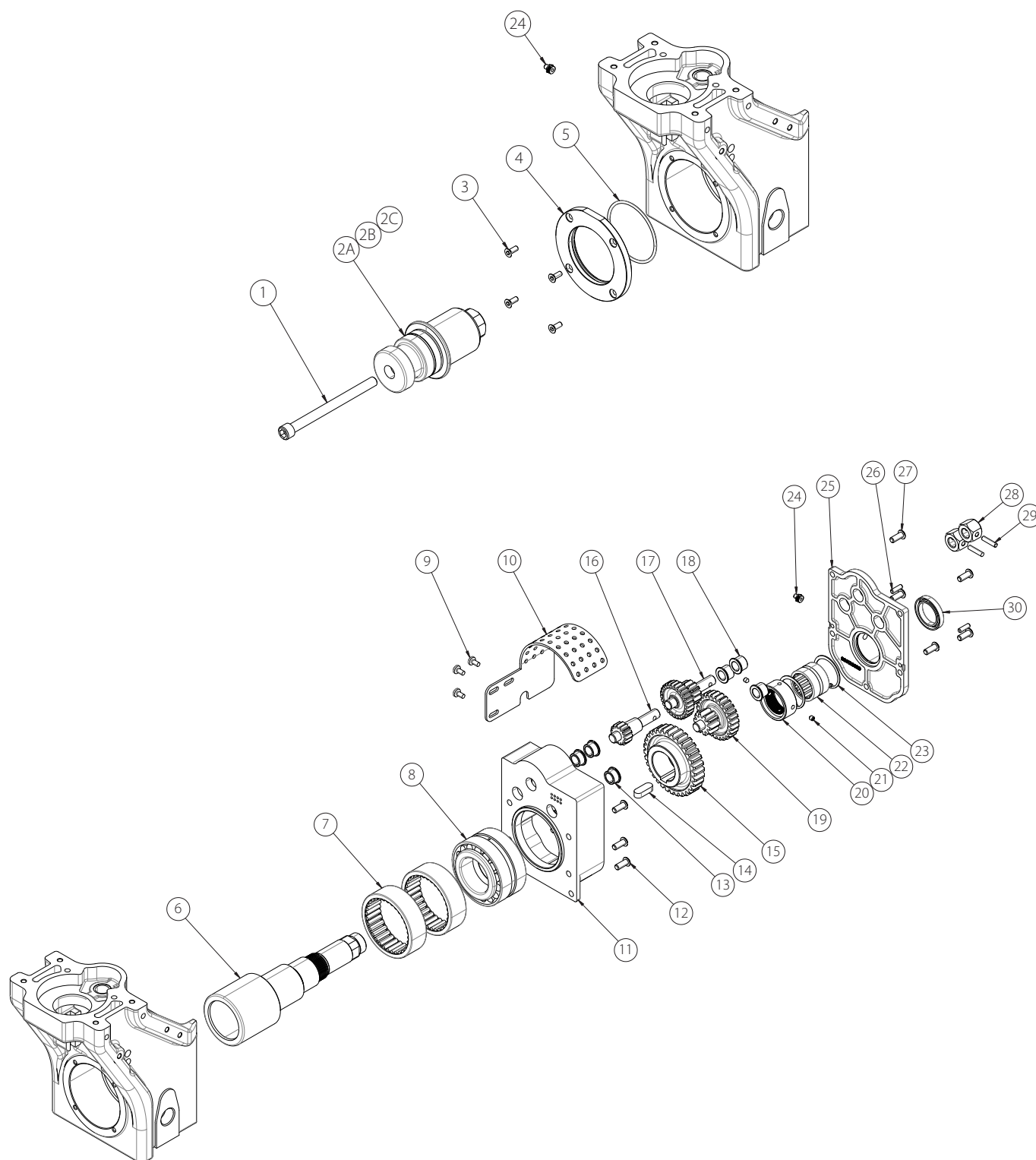
Item #	Part #	Qty.	Description
	R9S8121U08	1	8 Inch Upper Roll Assembly
36	*	1	Retaining Ring for Bore
37	*	1	Needle Bearing NK35/30
38	*	1	Needle Bearing NK35/20
39C	*	1	8 Inch Upper Roll

* Included in assembly. Not available for individual sale.

INDIVIDUAL ITEMS

Item #	Part #	Qty.	Description
6	R000121NUT	1	Drive Nut
7	R000120PNH	10	Shear Pin Ø6
27	R000121HTE	1	Hoist Eye

RG1210 BODY FRONT AND REAR ASSEMBLIES



RG1210 BODY FRONT AND REAR ASSEMBLIES (CONTINUED)

GEAR ASSEMBLY

Item #	Part #	Qty.	Description
	R000121GRA	1	Gear Assembly
14	*	1	Rectangular Key 12 x 8 x 30
15	*	1	First Level Gear
16	*	1	Fourth Level Gear
17	*	1	Third Level Gear
19	*	1	Second Level Gear
20	*	1	Lock Nut
21	*	2	Hex Socket Set Screw w/ Cone Point M6 x 8

* Included in assembly. Not available for individual sale.

GEARBOX COVER ASSEMBLY

Item #	Part #	Qty.	Description
	R000121GCA	1	Gearbox Cover Assembly
24	*	2	Lubrication Fitting Straight M10 x 1
25	*	1	Back Cover of Gearbox
26	*	2	Parallel Pin Ø6 x 20
27	*	5	Screw Socket Cap M8 x 20
30	*	1	Seal Ring W35*50

* Included in assembly. Not available for individual sale.

GEAR BOX GUARD ASSEMBLY

Item #	Part #	Qty.	Description
	R000121GBG	1	Gear Box Guard Assembly
9	*	3	Pan Head Screw w/ Cross Recess M6 x 12
10	*	1	Guard

* Included in assembly. Not available for individual sale.

GEAR BOX ASSEMBLY

Item #	Part #	Qty.	Description
	R000121GBA	1	Gear Box Assembly
11	*	1	Gear Box
12	*	6	Screw Socket Cap M8 x 20

* Included in assembly. Not available for individual sale.

MAIN SHAFT BEARING ASSEMBLY

Item #	Part #	Qty.	Description
	R000121MSB	1	Main Shaft Bearing Assembly
7	*	2	Needle Bearing RNA4914
8	*	1	Taper Roller Bearing 352211E
22	*	1	Needle Bearing RNA6906
23	*	2	Retaining Ring for Bore 47

* Included in assembly. Not available for individual sale.

END PLATE ASSEMBLY

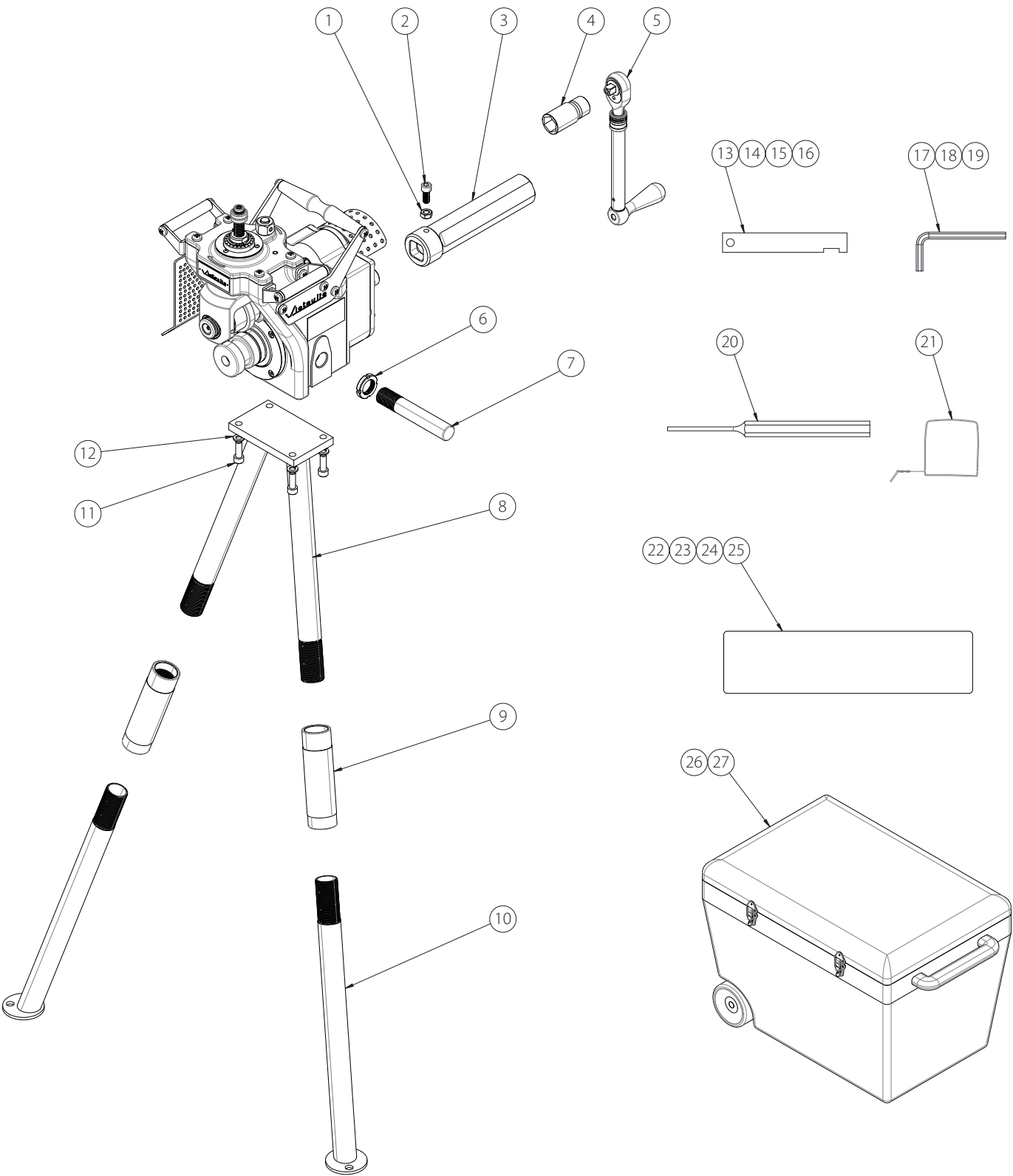
Item #	Part #	Qty.	Description
	R000121EPA	1	End Plate Assembly
3	*	4	Screw Socket Cap M6 x 16
4	*	1	End Plate
5	*	1	O-Ring Ø85 x 3.1

* Included in assembly. Not available for individual sale.

INDIVIDUAL ITEMS

Item #	Part #	Qty.	Description
1	R000121LRS	1	Lower Roll Retaining Stud
2A	R9S2121L03	1	2-3 Inch Lower Roll
2B	R9S4121L06	1	4-6 Inch Lower Roll
2C	R9S8121L08	1	8 Inch Lower Roll
6	R000121MNS	1	Main Shaft
13	R000121GBB	3	Short Bushing for Gearbox
18	R000121GCB	3	Gearbox Cover Bushings
28	R000121NUT	1	Drive Nut
29	R000120PNH	10	Shear Pin Ø6

RG1210 DRIVE AND SUPPORT ASSEMBLIES



RG1210 DRIVE AND SUPPORT ASSEMBLIES (CONTINUED)

POWER DRIVE ADAPTER ASSEMBLY

Item #	Part #	Qty.	Description
	R000121PDA	1	Power Drive Adapter Assembly
1	*	1	Hex Nut M10
2	*	1	Hex Socket Head Cap Screw M10 x 25
3	*	1	Adapter

* Included in assembly. Not available for individual sale.

HEX KEY ASSEMBLY

Item #	Part #	Qty.	Description
	R000121HKA	1	Hex Key Assembly
17	*	1	Hex Key S4
18	*	1	Hex Key S8
19	*	1	Hex Key S10

* Included in assembly. Not available for individual sale.

RATCHET ASSEMBLY

Item #	Part #	Qty.	Description
	R000121RTA	1	Ratchet Assembly
4	*	1	Socket 27MM
5	*	1	Adjustable Ratchet w/Swivel Handle

* Included in assembly. Not available for individual sale.

GROOVE DEPTH GAUGES

Item #	Part #	Qty.	Description
13	R024120GGE	1	2.5–3 Inch/73–88.9 MM Groove Confirmation Gauge
14	R020120GGE	1	2 Inch/60.3 MM Groove Confirmation Gauge
15	R040120GGE	1	4–6 Inch/114.3–168.3 MM Groove Confirmation Gauge
16	R080121GGE	1	8 Inch/219.1 MM Groove Confirmation Gauge

SUPPORT ARM ASSEMBLY

Item #	Part #	Qty.	Description
	R000121SAS	2	Support Arm Assembly
6	*	1	Round Nut M27 x 1.5
7	*	1	Support Arm

* Included in assembly. Not available for individual sale.

LABELS AND TAGS

Item #	Part #	Qty.	Description
22	R212387LBL	1	Adjustment Indicator Plate
23	R211240LBL	1	Pinch Point Plate
24	R512419LBL	1	Victaulic Logo Plate
25	R512182LBL	1	Serial Number Identification Plate

LEG ASSEMBLY

Item #	Part #	Qty.	Description
	R000121LEG	1	Leg Assembly
8	*	1	Leg Base
9	*	2	Sleeve
10	*	2	Leg Base
11	*	4	Screw Socket Cap M10 x 30
12	*	4	Spring Lock Washer Ø10

* Included in assembly. Not available for individual sale.

INDIVIDUAL ITEMS

Item #	Part #	Qty.	Description
20	R000120PNH	1	Shear Pin Punch
21	RW75100024	1	PT-100A Groove Diameter Tape
26	Z000G12CAS	1	Foot Locker
27	Z000G12FM0	1	Foam Insert Set

RG1210 Roll Grooving Tool

