

VAPS1672 Adjustable Pipe Stand



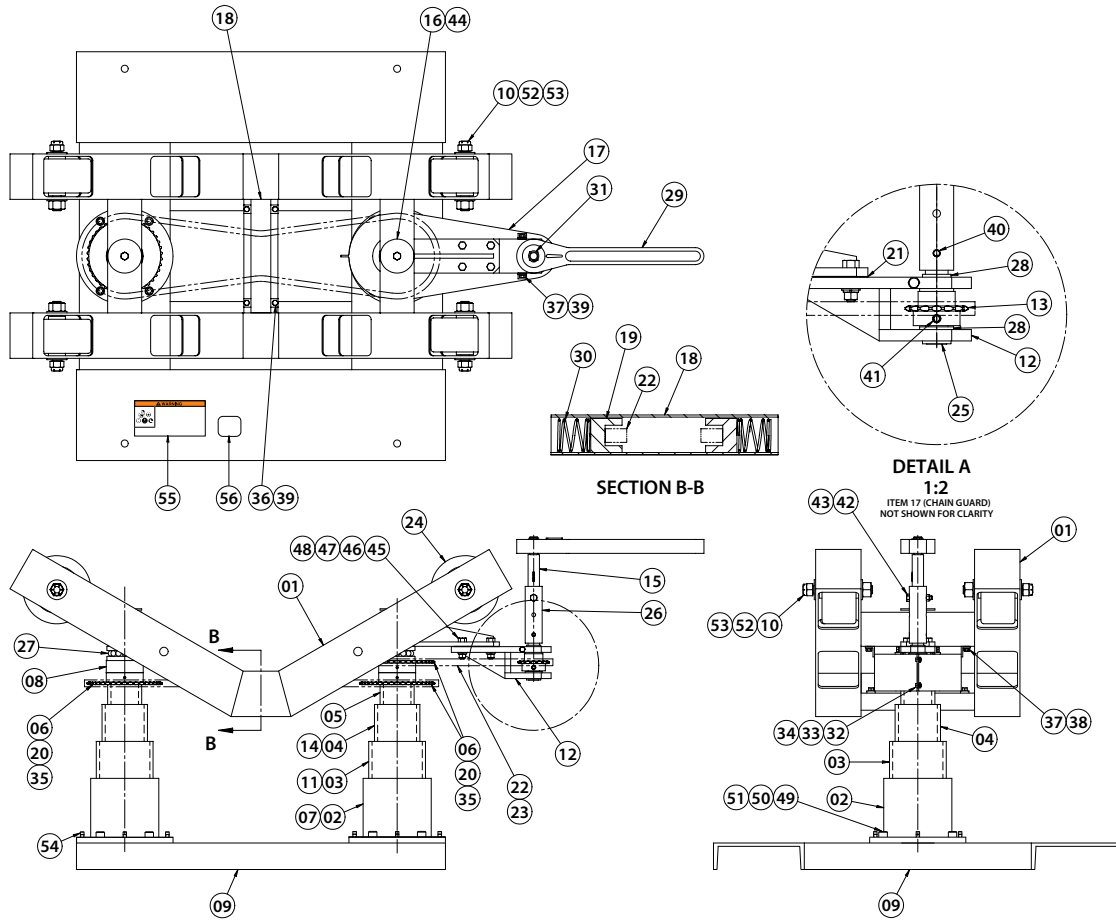
PARTS ORDERING INFORMATION

When ordering parts, the following information is necessary for Victaulic to process the order promptly:

1. Tool Model Number – VAPS1672
2. Tool Serial Number – The Serial Number can be found on the base frame.
3. Quantity, Item Number, Part Number, Description
4. Where to send the part(s) – Company Name and Address
5. To whose attention to send the part(s)
6. Purchase Order Number

Parts may be ordered from your nearest Victaulic Sales Office.

VAPS1672 Adjustable Pipe Stand



Item#	Part #	Qty.	Description
01	R-001-1672-PNT	1	Roller Support
02	R-002-1672-PNT	2	Bottom Column
03	R-003-1672-MCH	2	Intermediate Column (5-inch OD)
04	R-004-1672-MCH	2	Intermediate Column (4-inch OD)
05	R-005-236-PS0	2	Upper Column
06	R-006-236-PS0	3	Chain Sprocket
07	N-T03-000-019	2	Ret. Ring, Med. Duty
08	R-008-236-PS0	1	Spacer
09	R-009-1672-PNT	1	Base Frame
10	R-010-1672-ASY	4	Threaded Roll Pin and Hex Nut Assembly
11	N-T03-000-020	2	Ret. Ring, Med. Duty
12	R-012-236-PS0	1	Crank Bracket
13	R-013-1672-WLD	1	Hub Sprocket
14	N-T03-000-021	2	Ret. Ring, Med. Duty
15	R-015-1672-MCH	1	Crank Shaft
16	R-016-236-PS0	2	Washer
17	R-017-1672-PNT	1	Chain Guard
18	R-018-236-PS0	1	Chain Tensioner Guide
19	R-019-236-PS0	2	Chain Tensioner Block
20	N-K16-720-000	2	Key, 0.375 Square x 1.50" Lg. Steel
21	R-021-236-PS0	As Req	Shim, 1/2" Thick
22	N-M09-000-009	10 ft	#41 Roller Chain
23	N-M09-000-010	2	Connector Link for #41 Roller Chain
24	N-M16-720-000	4	Poly. Wheel
25	R-025-1672-MCH	1	Sprocket Output Shaft
26	R-026-1672-PNT	1	Adjusting Sleeve
27	N-B03-080-001	2	Thrust Bearing
28	N-B16-720-000	2	Flange Bearing

Item#	Part #	Qty.	Description
29	N-S16-720-000	1	3/4" Square Socket Reversible Ratchet
30	N-M16-720-001	2	Compression Spring, 1.468 OD x 2.50" Lg.
31	N-T03-000-032	1	Ret. Ring, Heavy Duty
32	N-S01-010-006	3	#10 - 24 UNC x 0.38 Lg. Hex Hd. Screw, Pltd.
33	N-W03-010-000	3	#10 Lock Washer, Pltd.
34	N-N01-010-000	3	#10 - 24 UNC Hex Nut, Pltd.
35	N-S03-040-012	3	1/4 - 20 UNC x 0.75 Lg. Sock. Hd. Set Screw, Blk. Ox.
36	N-S01-040-008	4	1/4 - 20 UNC x 0.50 Lg. Hex Hd. Screw, Pltd.
37	N-S01-040-010	4	1/4 - 20 UNC x 0.63 Lg. Hex Hd. Screw, Pltd.
38	N-W01-040-000	2	1/4" Flat Washer, Pltd.
39	N-W03-040-000	8	1/4" Lock Washer, Pltd.
40	N-P16-720-000	1	Ø 3/16" x 1.50" Lg. Roll Pin, Steel
41	N-P16-720-001	1	Ø 3/16" x 2.00" Lg. Roll Pin, Steel
42	N-S01-050-200	1	5/16 - 18 UNC x 2.00" Lg. Hex Hd. Screw, Pltd.
43	N-N08-050-000	1	5/16 - 18 UNC Nylok Hex Nut, Pltd.
44	N-S01-060-104	2	3/8 - 16 UNC x 1.25" Lg. Hex Hd. Bolt, Pltd.
45	N-S01-060-108	4	3/8 - 16 UNC x 1.50" Lg. Hex Hd. Bolt, Pltd.
46	N-W01-060-001	4	3/8" Flat Washer, Pltd.
47	N-W03-060-000	4	3/8" Lock Washer, Pltd.
48	N-N01-060-000	4	3/8 - 16 UNC Hex Nut, Pltd.
49	N-S04-167-200	8	1/2 - 13 UNC x 1.50" Lg. SHCS, Blk. Ox.
50	N-W03-080-000	8	1/2" Lock Washer, Pltd.
51	N-N01-080-000	8	1/2 - 13 UNC Hex Nut, Pltd.
52	N-W01-120-000	8	3/4" Flat Washer, Pltd.
53	N-N01-672-000	4	5/8 - 11 UNC Nylok Heavy Hex Lock Nut, Pltd.
54	N-S89-050-012	8	3/16 - 18 UNC x .75 Lg. Cup Pt. Sq. Hd. Set Screw, Pltd.
55	R-031-272-LAB	1	Warning Label
56	R-069-272-LAB	1	Serial Number Plate

For complete contact information, visit www.victaulic.com

RP-VAPS1672 5807 REV A UPDATED 08/2009 RPL0167200

VICTAULIC IS A REGISTERED TRADEMARK OF VICTAULIC COMPANY. © 2009 VICTAULIC COMPANY. ALL RIGHTS RESERVED. PRINTED IN THE USA.

RP-VAPS1672

