
VG Vic-Groover



PARTS ORDERING INFORMATION

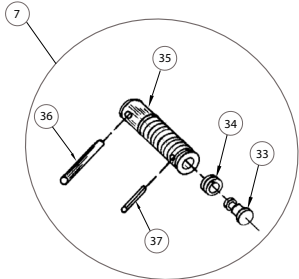
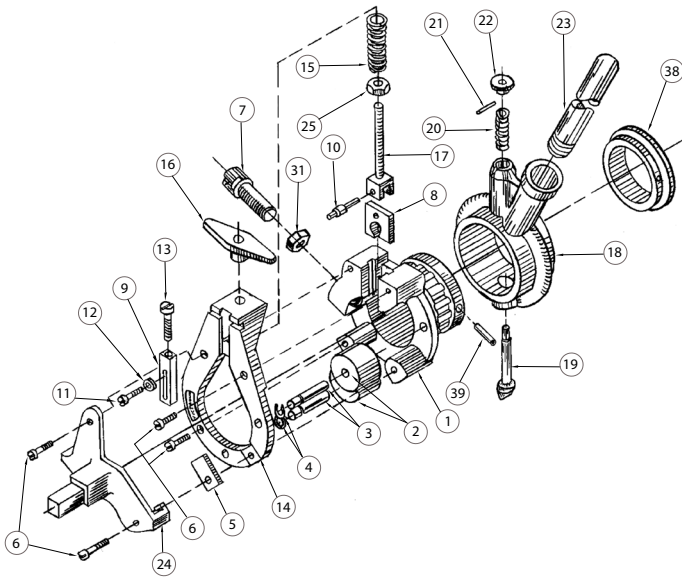
When ordering parts, the following information is necessary for Victaulic to process the order promptly:

1. Tool Model Number – VG
2. Tool Serial Number – The Serial Number can be found on the side of the tool.
3. Quantity*, Item Number, Part Number, Description
4. Where to send the part(s) – Company Name and Address
5. To whose attention to send the part(s)
6. Purchase Order Number

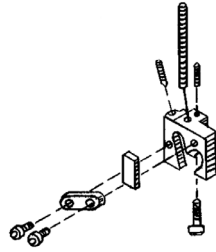
Parts may be ordered from your nearest Victaulic Sales Office.

* Quantity given in **Qty.** column indicates total number of pieces required per tool. Value of "A/R" indicates "As Required" which may differ based on usage and environment.

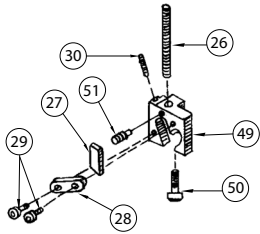
VG 3/4 - 8" VIC-GROOVER



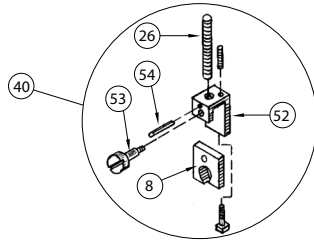
CLAMP SCREW ASSEMBLY (7) SIZES 2 1/2" AND LARGER



8" STYLE A (DISCONTINUED)



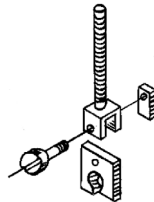
8" STYLE B



5" AND 6" STYLE B



TEMPLATE



5" AND 6" STYLE A (DISCONTINUED)

Item #	Description	Size	Qty.	Part #
1	Body	3/4 - 1"	1	R0010030VG
		1 1/4 - 2"	1	R0010050VG
		2 1/2 - 3"	1	R0010100VG
		3 1/2 - 4"	1	R0010140VG
		6"	1	R0010240VG
		8"	1	R0010320VG
		3 CI	1	R0010140VG
		6 CI	1	R001027CVG
		8 CI	1	R001036CVG
2	Roller 1" OD x 0.375" ID x 1.06" Lg.	3/4"	1	R0020030VG
	Slotted Roller		1	R0380030VG
	Roller 0.75" OD x 0.375" ID x 1.06" Lg.	1"	2	R0020040VG
	Roller 1.75" OD x 0.375" ID x 1.06" Lg.	1 1/4"	2	R0020050VG
	Roller 1.5" OD x 0.375" ID x 1.06" Lg.	1 1/2"	2	R0020060VG
	Roller 1" OD x 0.375" ID x 1.06" Lg.	2"	2	R0020030VG
	Roller 1.625" OD x 0.375" ID x 1.06" Lg.	2 1/2"	2	R0020100VG
	Roller 1" OD x 0.375" ID x 1.06" Lg.	3"	2	R0020030VG
	Roller 1.5" OD x 0.375" ID x 1.06" Lg.	3 1/2"	2	R0020060VG
	Roller 1" OD x 0.375" ID x 1.06" Lg.	4-5"	2	R0020030VG
	Roller 1.5" OD x 0.5" ID x 1.06" Lg.	6"	2	R0020240VG
	Roller 1.5" OD x 0.5" ID x 1.31" Lg.	8"	2	R0020320VG
	Roller 1.563" OD x 0.375" ID x 1.06" Lg.	3 CI	2	R002015CVG
	Roller 1.563" OD x 0.375" ID x 1.06" Lg.	4 CI	2	R002015CVG
	Roller 1.225" OD x 0.5" ID x 1.06" Lg.	6 CI	2	R002027CVG
Roller 1.075" OD x 0.5" ID x 1.31" Lg.	8 CI	2	R002036CVG	
3	Roller Pin 0.375" OD x 1.68" Lg.	3/4 - 5"	2	R0030030VG
	Roller Pin 0.5" OD x 1.68" Lg.	6"	2	R0030240VG
	Roller Pin 0.5" OD x 2.25" Lg.	8"	2	R0030320VG
	Roller Pin 0.375" OD x 1.68" Lg.	3 CI	2	R0030030VG
		4 CI	2	R0030030VG
6 CI		2	R0030030VG	
Roller Pin 0.5" OD x 2.25" Lg.	8 CI	2	R0030320VG	
4	Retaining Ring	3/4 - 8"	2	NT02000037
		3 CI	2	NT02000037
		4 CI	2	NT02000037
		6 CI	2	NT02000050
		8 CI	2	NT02000037
5	Pipe End Stop*	3/4 - 2"	2	R0050030VG
		2 1/2 - 8"	3	R0050030VG
		3 CI	2	R005015CVG
		4 CI	2	R005015CVG
		6 CI	2	R005015CVG
8 CI	2	R005036CVG		
6	5/16 - 18 x 1 1/2 Fillister Hd. Slit. Scr. B.Z.P.	3/4 - 8"	4	NS12050108
		3 CI	4	NS12050108
		4 CI	4	NS12050108
		6 CI	4	NS12050108
		8 CI	4	NS12050108
7	Clamp Screw (Assembly)	3/4"	1	R0070030VG
		1 - 2"	1	R0070040VG
		2 1/2 - 6"	1	R0070100VG
		8"	1	R0070320VG
		3 CI	1	R0070100VG
		4 CI	1	R0070100VG
		6 CI	1	R0070100VG
		8 CI	1	R0070320VG
8	Grooving Knife*	3/4 - 3"	1	R0080030VG
		3 1/2 - 4"	1	R0080140VG
		5 - 6"	1	R0080200VG
		3 CI	1	R008015CVG
		4 CI	1	R008015CVG
		6 CI	1	R008015CVG
		3/4 - 4"	1	R0090030VG
9	Knife Stop Guide	3/4 - 4"	1	R0090030VG
		3 CI	1	R0090030VG
10	Knife Stop	3/4 - 4"	1	R0100030VG
		3 CI	1	R0100030VG
11	1/4 x 20 x 3/4 Fillister Hd. Slit. Scr. B.Z.P.	3/4 - 4"	1	NS12040012
		3 CI	1	NS12040012
12	1/4 SAE Flat Washer B.Z.P.	3/4 - 4"	1	NW06040000
		3 CI	1	NW06040000

* For additional materials, reference the items denoted with a † at the end of the description.

RP-VG / VG Vic-Groover / Repair Parts

Item #	Description	Size	Qty.	Part #
13	Guide Adjusting Screw	¾ - 4"	1	R0130030VG
		3 Cl	1	R0130030VG
14	Cover	¾ - 1"	1	R0140030VG
		1 ¼ - 2"	1	R0140050VG
		2 ½ - 3"	1	R0140100VG
		3 ½ - 4"	1	R0140140VG
		5"	1	R0140200VG
		6"	1	R0140240VG
		8"	1	R0140320VG
		3 Cl	1	R0140140VG
		4 Cl	1	R0140200VG
		6 Cl	1	R014027CVG
		8 Cl	1	R014036CVG
15	Feed Spring*	¾ - 4"	1	R0150030VG
		5 - 6"	1	R0150200VG
		8"	1	R0150030VG
		3 Cl	1	R0150200VG
		4 Cl	1	R0150200VG
		6 Cl	1	R0150200VG
		8 Cl	1	R0150030VG
16	Wing Handle	All Sizes	1	R0160030VG
17	Knife Holder	¾ - 3"	1	R0170030VG
		3 ½ - 4"	1	R0170140VG
		3 Cl	1	R0170140VG
18	Ratchet Housing	¾ - 2"	1	R0180030VG
		2 ½ - 3"	1	R0180100VG
		3 ½ - 4"	1	R0180140VG
		5"	1	R0180200VG
		6"	1	R0180240VG
		8"	1	R0180320VG
		3 Cl	1	R0180140VG
		4 Cl	1	R0180200VG
		6 Cl	1	R0180240VG
		8 Cl	1	R0180320VG
19	Ratchet Pawl	All Sizes	1	R0550030VG
20	Ratchet Spring	All Sizes	1	NM03000007
21	¾ x ½ Type 5 Groove Pin	All Sizes	1	NP80000001
22	Ratchet Knob	All Sizes	1	R0572000VE
23	Ratchet Handle	¾ - 4"	1	R0230030VG
		5 - 6"	1	R0230200VG
		8"	1	R0230200VG
		3 Cl	1	R0230030VG
		4 Cl	1	R0230200VG
		6 Cl	1	R0230200VG
		8 Cl	1	R0230200VG
		¾ - 1"	1	R0240030VG
24	Yoke	1 ¼ - 2"	1	R0240050VG
		2 ½ - 3"	1	R0240100VG
		3 ½ - 4"	1	R0240140VG
		5"	1	R0240200VG
		6"	1	R0240240VG
		8"	1	R0240320VG
		3 Cl	1	R0240140VG
		4 Cl	1	R0240200VG
		6 Cl	1	R0240240VG
		8 Cl	1	R0240320VG
		25	¾ - 16 Hex Jam Nut B.Z.P.	¾"
1 ¼ - 1 ½"	1			NN03060000
2 ½"	1			NN03060000
3 ½"	1			NN03060000
3 Cl	1			NN03060000
4 Cl	1			NN03060000
26	Tool Bit Holder Stem	5 - 6"	1	R0290200VG
		8"	1	R0290320VG
		4 Cl	1	R0290200VG
		6 Cl	1	R0290200VG
		8 Cl	1	R0290200VG
27	Tool Bit	8"	1	R0300320VG
		8 Cl	1	R030036CVG
28	Link	8"	1	R0310320VG
		8 Cl	1	R0310320VG

* For additional materials, reference the items denoted with a † at the end of the description.

Item #	Description	Size	Qty.	Part #
29	#10-32 x ¾ Soc. Hd. Cap	8"	1	NS14010006
		8 Cl	1	NS14010006
30	#10-32 x ¾ Oval Pt. Set Scr.	8"	1	NS88010010
		8 Cl	1	NS88010010
31	¾-9 Hex Nut B.Z.P.	8"	1	NN01140000
		8 Cl	1	NN01140000
32	Template	¾ - 2"	1	R0370030VG
		2 ½ - 3"	1	R0370100VG
		3 ½ - 4"	1	R0370140VG
		5 - 6"	1	R0370200VG
		8"	1	R0370320VG
33	Plunger			See Item #7
34	Clamp Screw Spring			
35	Clamp Screw			
36	¼ x 1 ¾ Type 5 Groove Pin			
37	½ x ½ Type 2 Groove Pin			
38	Bushing	¾"	1	R0440030VG
		1 ½"	1	R0440060VG
		2 ½"	1	R0440100VG
		3 ½"	1	R0440140VG
		3 Cl	1	R044015CVG
		4 Cl	1	R044019CVG
39	¾ Roll Pin	¾"	1	NP80000003
		1 ¼ - 1 ½"	1	NP80000002
		2 ½"	1	NP80000002
		3 ½"	1	NP80000002
		3 Cl	1	NP80000002
		4 Cl	1	NP80000002
40	5" and 6" Style B Assembly	5 - 6"	1	R070020ASY
42	Pipe End Stop "ES" (Straight) †	2"	1	R0630080VG
		2 ½ - 3"	2	R0630080VG
		4"	2	R0630160VG
		6"	2	R0630160VG
		8"	2	R0630320VG
43	Grooving Knife (ES) †	2 - 3"	1	R0640080VG
		4"	1	R0640160VG
		6"	1	R0640240VG
		8"	1	R0640320VG
44	Pipe End Stop "ES" (Angled) †	2 ½ - 3"	1	R0650100VG
		4"	1	R0650160VG
		6"	1	R0650160VG
		8"	1	R0650320VG
45	Grooving Knife (Stainless) †	1 - 3"	1	R0660050VG
		3 ½ - 4"	1	R0660140VG
		5 - 6"	1	R0660200VG
		8"	1	R0660320VG
46	Grooving Knife (PVC Plastic) †	¾ - 1 ½"	1	R0670030VG
		2 - 3"	1	R067003PVG
		3 ½ - 4"	1	R067014PVG
		5 - 6"	1	R067020PVG
		8"	1	R067032PVG
47	Feed Spring (PVC Plastic) †	¾ - 8"	1	R0680030VG
48	Pipe End Stop (CIF) †	3 Cl	1	R069015CGV
		4 Cl	1	R069015CGV
		6 Cl	1	R069015CGV
		8 Cl	1	R069036CVG
49	Tool Bit Holder	8"	1	R0730320VG
		8 Cl	1	R0730320VG
50	Depth Stop	8"	1	R0740320VG
		8 Cl	1	R0740320VG
51	#10-32 x ¾ Brass Tip Set Scr.	8"	1	NS83010006
52	Knife Holder	5 - 6"	1	R0700200VG
		4 Cl	1	R0700200VG
		6 Cl	1	R0700200VG
53	Knife Screw	5 - 6"	1	R0710200VG
		4 Cl	1	R0710200VG
		6 Cl	1	R0710200VG
54	¾ x 1 Roll Pin	5 - 6"	1	NP80000003
		4 Cl	1	NP80000003
		6 Cl	1	NP80000003

† Part is not shown in diagrams.

VG Vic-Groover

For complete contact information, visit victaulic.com

RP-VG 14809 REV A UPDATED 05/2021 RPL00VG000

VICTAULIC IS A REGISTERED TRADEMARK OF VICTAULIC COMPANY AND/OR ITS AFFILIATED ENTITIES IN THE UNITED STATES AND/OR OTHER COUNTRIES. © 2021 VICTAULIC COMPANY. ALL RIGHTS RESERVED.

