
VHCT900 Hole Cutting Tool



PARTS ORDERING INFORMATION

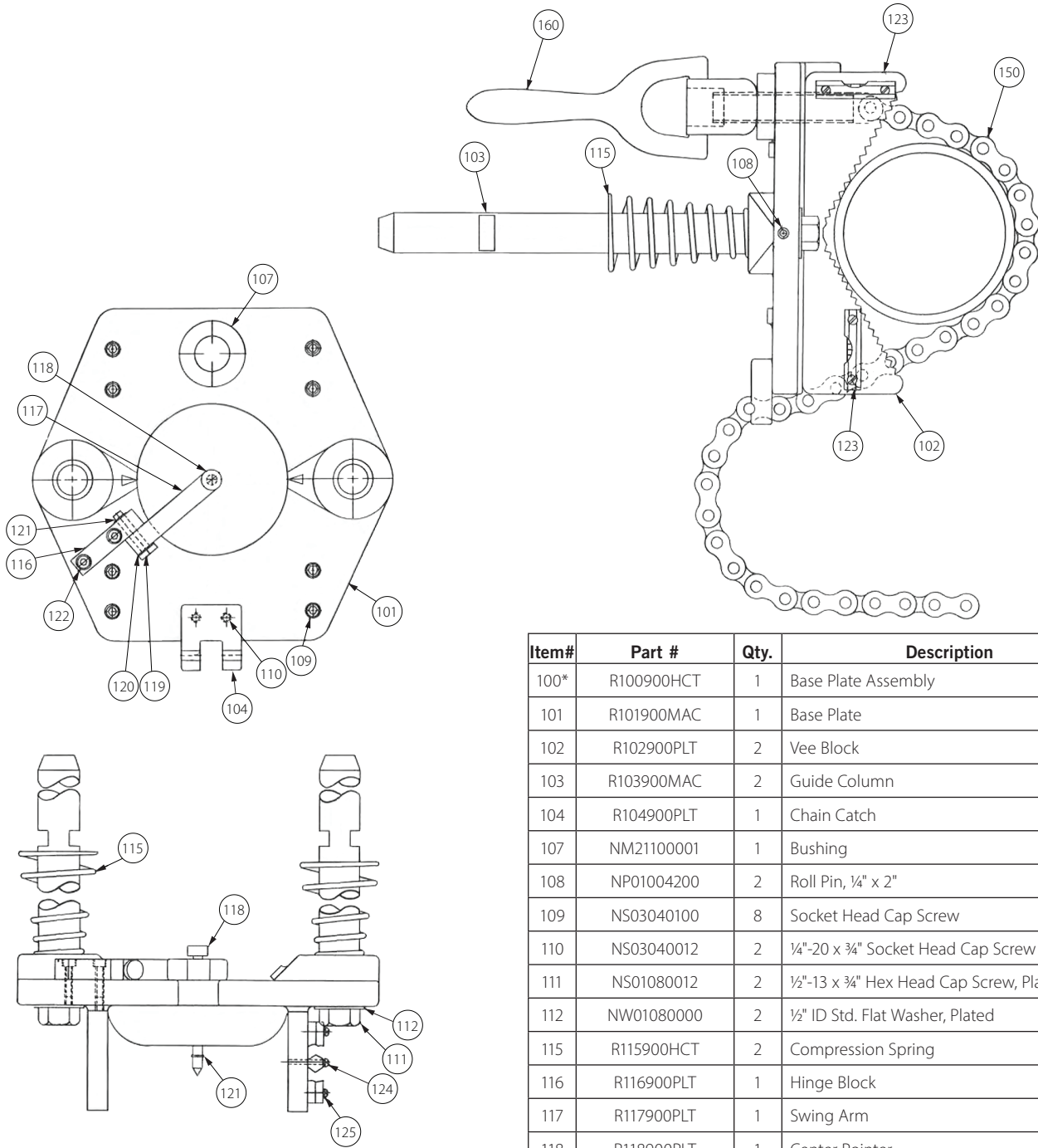
When ordering parts, the following information is necessary for Victaulic to process the order promptly:

1. Tool Model Number – VHCT900
2. Tool Serial Number – The Serial Number can be found on the side of the tool.
3. Quantity*, Item Number, Part Number, Description
4. Where to send the part(s) – Company Name and Address
5. To whose attention to send the part(s)
6. Purchase Order Number

Parts may be ordered from your nearest Victaulic Sales Office.

* Quantity given in **Qty.** column indicates total number of pieces required per tool. Value of "A/R" indicates "As Required" which may differ based on usage and environment.

BASE PLATE ASSEMBLY



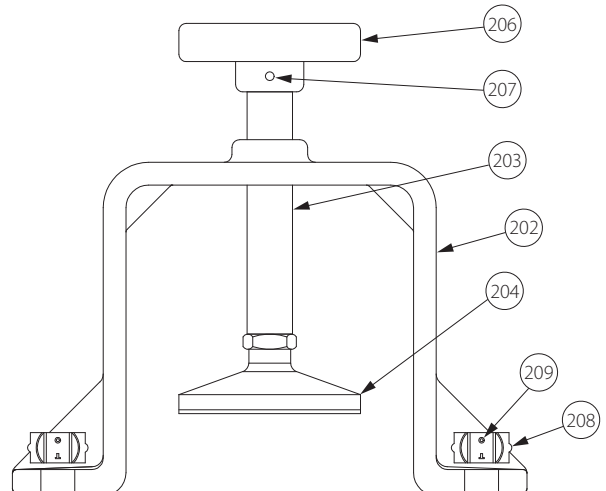
Item#	Part #	Qty.	Description
100*	R100900HCT	1	Base Plate Assembly
101	R101900MAC	1	Base Plate
102	R102900PLT	2	Vee Block
103	R103900MAC	2	Guide Column
104	R104900PLT	1	Chain Catch
107	NM21100001	1	Bushing
108	NP01004200	2	Roll Pin, 1/4" x 2"
109	NS03040100	8	Socket Head Cap Screw
110	NS03040012	2	1/4"-20 x 3/4" Socket Head Cap Screw
111	NS01080012	2	1/2"-13 x 3/4" Hex Head Cap Screw, Plated
112	NW01080000	2	1/2" ID Std. Flat Washer, Plated
115	R115900HCT	2	Compression Spring
116	R116900PLT	1	Hinge Block
117	R117900PLT	1	Swing Arm
118	R118900PLT	1	Center Pointer
119	R119900PLT	1	Hinge Pin
120	NW09040001	1	Spring Washer
121	NT02040000	2	Retaining Ring
122	NS14010012	2	Socket Head Cap Screw
123	NM14000006	2	Level
124	NS07006012	4	6-32 UNC x 3/4" Round Head Slot Screw, Plated
125	NW03006000	4	#6 Std. Lock Washer, Plated
150	R150900HCT	1	Chain and Chain Screw Assembly
160	R160900HCT	1	Handle and Chain Nut Assembly

*Contains items 101 through 160.

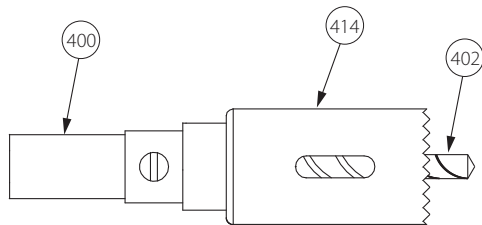
FEEDER ASSEMBLY

Item#	Part #	Qty.	Description
200	R200900HCT	1	Feeder Assembly*
203	R203900PLT	1	Rod
204	R204900HCT	1	Leveling Pad Assembly
206	R206900MAC	1	Handwheel
207	NP80000003	1	Roll Pin
208	NT08000001	2	Speed Clip
209	NT07020006	2	Pop Rivet

* Includes items 203 through 209



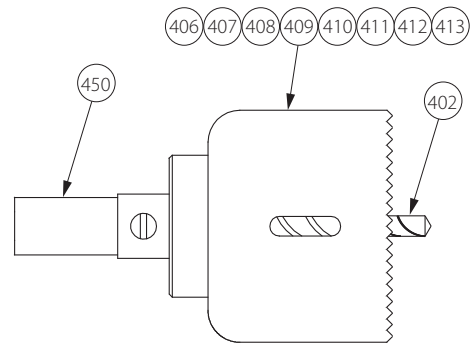
ARBOR ASSEMBLIES



For 1" Diameter Hole Saw

Item#	Part #	Qty.	Description
400	R450900HCT	1	Mandrel Assembly for 1" Dia. Hole Saw
402	R402900HCT	1	Coupon-Retaining Drill Bit
414	NM18000011	*	Hole Saw – 1" Dia.

*Hole saws purchased separately.



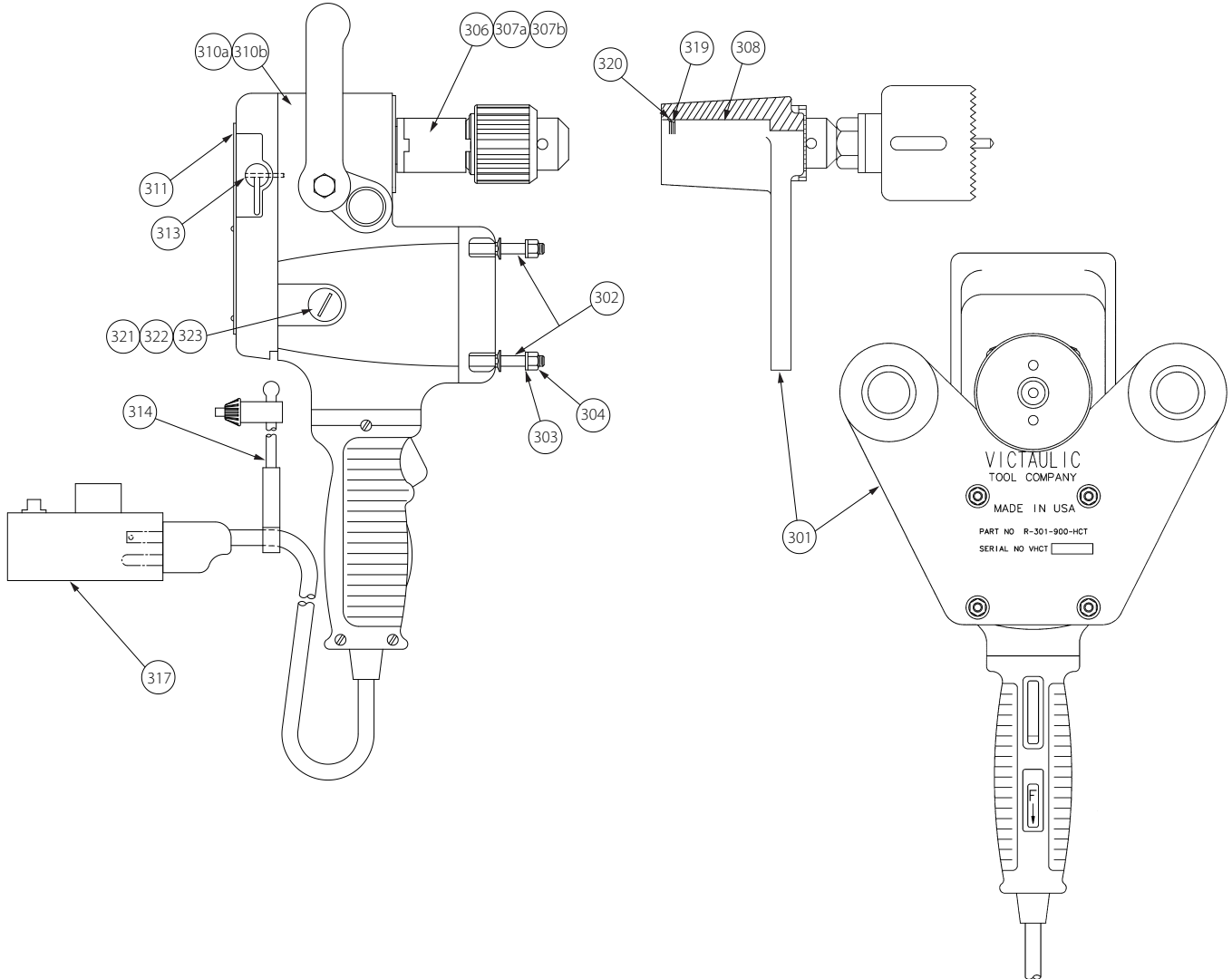
For 1 1/4" Diameter and Larger Hole Saws

Item#	Part #	Qty.	Description
450	R400900HCT	1	Mandrel Assembly for 1 1/4" Dia. and Larger Hole Saws
402	R402900HCT	1	Coupon-Retaining Drill Bit
406	NM18000016	*	Hole Saw – 1 1/4"
407	NM18000021	*	Hole Saw – 1 1/2"
408	NM18000026	*	Hole Saw – 1 3/4"
409	NM18000031	*	Hole Saw – 2"
410	NM18000037	*	Hole Saw – 2 1/2"
411	NM18000040	*	Hole Saw – 2 3/4"
412	NM18000047	*	Hole Saw – 3 1/2"
413	NM18000050	*	Hole Saw – 4 1/2"

*Hole saws purchased separately.

VHCT900 Hole Cutting Tool

DRILL MOTOR ASSEMBLY



Item#	Part #	Qty.	Description
350	R350900HCT	Ref.	Drill Motor Assembly
301	R301900MAC	1	Motor Mounting Plate
302	R302900PLT	4	Motor Mounting Stud
303	NW03040000	4	¼" Standard Lockwasher, Plated
304	NN01040000	4	¼"-20 UNC Hex Nut, Plated
306	NS03040300	1	¼"-20 x 3 Socket Head Cap Left
307a	R307900PLT	1	Chuck Extension
307b	R308900PLT	1	Chuck Extension, Tab Style
308	NB08100001	2	Linear Bearing
310a	NM20000001	1	Drill Motor, 110V

Item#	Part #	Qty.	Description
310b	NM20000002	1	Drill Motor, 220V
311	*	1	Name Plate
313	NP80000003	1	Roll Pin, ⅜" x 1.00 LG
314	R314900HCT	1	Chuck Key Assembly
317	NE90000149	1	Stepless Speed Controller
319	R319900MAC	2	Linear Bearing Spacer
320	NT01000156	2	Retaining Ring
321	NE90000027	1	900 Brush Holder MLW #14-46-1550
322	NE90000055	1	900 Brush Assembly MLW #22-18-0670
323	NE90000056	1	900 Brush Cap MLW #23-44-0220

* Included in assembly. Not available for individual sale.

For complete contact information, visit victaulic.com

RP-VHCT900 15423 REV A UPDATED 06/2021 RPL0900000

VICTAULIC IS A REGISTERED TRADEMARK OF VICTAULIC COMPANY AND/OR ITS AFFILIATED ENTITIES IN THE UNITED STATES AND/OR OTHER COUNTRIES. © 2021 VICTAULIC COMPANY. ALL RIGHTS RESERVED.

