



PRODUCTS AND PIPE

AQUAMINE PRICE LIST

PL2024-AMP
Effective May 1, 2024



ENGINEERING CONFIDENCE INTO EVERY BUILD

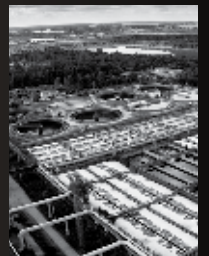


Around the world and across diverse business lines, Victaulic provides durable pipe joining solutions that solve the construction industry's toughest challenges.

Since 1919, Victaulic's innovative piping products and design services continue to **increase construction productivity** and **reduce risk, ensuring projects are completed safely, on time and within budget.**

With more than 40 international facilities, Victaulic helps customers in 140 countries succeed in the global construction industry.

FIRE PROTECTION | HVAC | PLUMBING | OIL & GAS | MINING | WATER & WASTEWATER | POWER GENERATION | MARITIME



victaulic.com

© 2024 VICTAULIC COMPANY. ALL RIGHTS RESERVED.
Source: skyscrapercenter.com and the Council on Tall Buildings and Urban Habitat



Table of Contents

Pipe

Series 2900 Aquamine™ PVC Pipe with Coupling	2
Series 2900 Aquamine™ PVC Pipe with Beveled Coupling	2
Aquamine™ Pipe	2

Couplings

Series 2904 Aquamine™ Female to Female Coupling	3
Aquamine™ Female to Female Beveled Coupling	3
Series 2905 Aquamine™ Female to Solvent Cement Female Coupling	3
Series 2930 Aquamine™ Female to Female NPT Female Outlet Coupling	4
Series 2937, Series 2938, and Series 2939 Female to Female Coupling with Female NPT Formed Outlet	4
Style 2970 Aquamine™ Coupling for Plain End PVC	5
Style 2971 Aquamine™ Transition Coupling for PVC to HDPE	5
Style 2972 Aquamine™ Transition Coupling for PVC to Groove	5

Fittings

Series 2906 Male x Plain End Male Adapter Nipple	5
Series 2907 Male x Victaulic® OGS Groove Adapter Nipple	6
Series 2908 Male x Male NPT Adapter Nipple	6
Series 2909 Plain End Male x Male NPT Adapter Nipple	6
Series 2910 Male x Male 90° Elbow	7
Series 2912 Male x Male 45° Elbow	7
Series 2913 Male x Male 90° Sweep	7
Series 2914 Male x Male 45° Sweep	8

Series 29102 Male x Male 11¼° Elbow	8
Series 2911 Male x Male 22½° Elbow	8
Aqua Link Male x Male x Male Lateral Wye	9
Series 2915 Male End Cap	9
Series 2916 Male x Flanged Adapter Nipple	9
Series 2917 Male x Male x Male Tee	10
Series 2918 Male x Male x Male Reducing Tee	10
Series 2919 Female x Male Reducer	10
Series 2920 Male x Solvent Cement Female Transition Fitting	11
Series 2940 Female x Male Transition with Female NPT Outlet	11

Valves

Series 2957 Aquamine™ Butterfly Valve	12
---	----

Spare Parts

Splines	12
O-rings	12
Replacement Gaskets for Style 2970 and Style 2971	13
Replacement Hardware for Style 2970, Style 2971, and Style 2972	13

Tools

Spline Insertion Tool	13
APG Aquamine™ Grooving Tool for PVC Pipe	13
Terms and Conditions of Sale	Inside Back Cover
Warranty	Inside Back Cover

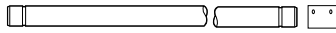
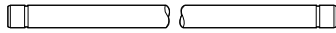
Aquamine™ Products and Pipe

Series 2900

AQUAMINE™ PVC PIPE WITH COUPLING

AQUAMINE™ PVC PIPE WITH BEVELED COUPLING

Refer to publication 50.01



Size inches	Victaulic Part No.		Standard Dimension Ratio (SDR)	PSI	Price per Foot
	Pipe with Coupling	Pipe with Beveled Coupling			
2	T0209000IK	T0209002IK	17	250	\$14.50
2	T0209000II	T0209002II	21	200	13.35
3	T0309000IK	T0309002IK	17	250	26.60
3	T0309000II	T0309002II	21	200	23.60
4	T0409000IL	T0409002IL	12.4	350	52.75
4	T0409000IK	T0409002IK	17	250	41.60
4	T0409000II	T0409002II	21	200	35.55
4	T0409000IG	T0409002IG	26	160	31.30
6	T0609000IL	T0609002IL	12.4	350	109.15
6	T0609000IK	T0609002IK	17	250	78.20
6	T0609000II	T0609002II	21	200	65.50
6	T0609000IG	T0609002IG	26	160	59.15
8	T0809000IL	T0809002IL	12.4	350	179.30
8	T0809000IK	T0809002IK	17	250	141.70
8	T0809000II	T0809002II	21	200	116.80
8	T0809000IG	T0809002IG	26	160	99.50
10	T1009000IG	T1009002IG	26	160	152.95
12	T1209000IG	T1209002IG	26	160	206.35

NOTE: Items listed in shaded areas are non-cancellable and non-returnable.

Aquamine™ Pipe Only

Refer to publication 50.01

Size inches	Victaulic Part No.	Standard Dimension Ratio (SDR)	PSI	Price per Foot
2	T02090100K	17	250	\$10.70
2	T02090100I	21	200	9.45
3	T03090100K	17	250	21.20
3	T03090100I	21	200	17.80
4	T04090100L	12.4	350	40.95
4	T04090100K	17	250	33.70
4	T04090100I	21	200	28.30
4	T04090100G	26	160	23.60
6	T06090100L	12.4	350	90.60
6	T06090100K	17	250	66.25
6	T06090100I	21	200	54.00
6	T06090100G	26	160	47.25
8	T08090100L	12.4	350	149.50
8	T08090100K	17	250	116.25
8	T08090100I	21	200	94.65
8	T08090100G	26	160	77.60
10	T10090100G	26	160	120.65
12	T12090100G	26	160	163.50

NOTE: Items listed in shaded areas are non-cancellable and non-returnable.

Aquamine™ Products and Pipe

Series 2904

AQUAMINE™ FEMALE TO FEMALE COUPLING

Refer to publication 50.01



Size inches	Victaulic Part No.	PSI	Price Each
2	C0209040IK	250	\$85.00
3	C0309040IK	250	116.50
4	C0409040IK	250	147.50
4 *	C0409040IL	350	227.50
6	C0609040IK	250	224.00
6 *	C0609040IL	350	344.00
8	C0809040II	200	411.00
8 †	C0809040IK	250	477.50
8 *	C0809040IL	350	549.00
10	C1009040IG	160	595.00
12	C1209040IG	160	789.50

NOTE: Items listed in shaded areas are non-cancellable and non-returnable.

* High pressure coupling

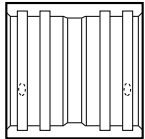
† Coupling with high pressure spline

Series 2904

AQUAMINE™ FEMALE TO FEMALE BEVELED COUPLING

For Directional Drilling and other applications where pipe is pulled

Refer to publication 50.01



Size inches	Victaulic Part No.	PSI	Price Each
2	C0209041IK	250	\$85.00
3	C0309041IK	250	116.50
4	C0409041IK	250	147.50
4 *	C0409041IL	350	227.50
6	C0609041IK	250	224.00
6 *	C0609041IL	350	344.00
8	C0809041II	200	411.00
8 †	C0809041IK	250	477.50
8 *	C0809041IL	350	549.00
10	C1009041IG	160	595.00
12	C1209041IG	160	789.50

NOTE: Items listed in shaded areas are non-cancellable and non-returnable.

* High pressure coupling

† Coupling with high pressure spline

Series 2905

AQUAMINE™ FEMALE TO SOLVENT CEMENT FEMALE COUPLING

Refer to publication 50.01



Size inches	Victaulic Part No.	PSI	Price Each
2	C0209050IK	250	\$68.00
3	C0309050IK	250	93.00
4	C0409050IK	250	115.00
6	C0609050IK	250	191.50
8	C0809050II	200	355.50
10	C1009050IG	160	550.00
12	C1209050IG	160	712.50

NOTE: Items listed in shaded areas are non-cancellable and non-returnable.

Aquamine™ Products and Pipe

Series 2930

AQUAMINE™ FEMALE TO FEMALE NPT FEMALE OUTLET COUPLING

(Tapped Female Pipe Threads)

Refer to publication 50.01



Size inches				Victaulic Part No.	PSI	Price Each	
2	x	2	x	$\frac{3}{4}$	CB729300II	200	\$115.00
				1	CB739310II	200	115.00
3	x	3	x	$\frac{3}{4}$	CC609300II	200	154.00
				1	CC629310II	200	154.00
				$1\frac{1}{2}$	CC649330IG	160	154.00
4	x	4	x	$\frac{3}{4}$	CD669300II	200	186.50
				1	CD679310II	200	186.50
				$1\frac{1}{2}$	CD729330IG	160	186.50
				2	CD749350IG	160	220.00
6	x	6	x	$\frac{3}{4}$	CK209300II	200	347.50
				1	CE999310II	200	347.50
				$1\frac{1}{2}$	CF009330II	200	347.50
				2	CF019350IG	160	347.50
8	x	8	x	$\frac{3}{4}$	CF589300II	200	505.00
				1	CF599310II	200	505.00
				$1\frac{1}{2}$	CF619330II	200	505.00
				2	CF629350IG	160	505.00
10	x	10	x	$\frac{3}{4}$	CG029300IG	160	643.50
				1	CG039310IG	160	651.00
				$1\frac{1}{2}$	CG059330IG	160	659.00
				2	CG069350IG	160	703.50
12	x	12	x	$\frac{3}{4}$	CG469300IG	160	849.00
				1	CG479310IG	160	858.00
				$1\frac{1}{2}$	CG499330IG	160	864.00
				2	CG509350IG	160	905.50

NOTE: Items listed in shaded areas are non-cancellable and non-returnable.

Series 2937

Series 2938

Series 2939

FEMALE TO FEMALE COUPLING WITH FEMALE NPT FORMED OUTLET

Refer to publication 50.04



Size inches				Victaulic Part No.	PSI	Price Each	
2	x	2	x	1	CB739370IK	250	\$154.00
3	x	3	x	1	CC629370IK	250	205.50
				$1\frac{1}{2}$	CC649380IK	250	205.50
4	x	4	x	1	CD679370IK	250	256.50
				$1\frac{1}{2}$	CD729380IK	250	256.50
				2	CD749390IK	250	256.50
6	x	6	x	1	CE999370IK	250	378.00
				$1\frac{1}{2}$	CF009380IK	250	378.00
				2	CF019390IK	250	378.00

NOTE: Items listed in shaded areas are non-cancellable and non-returnable.

Aquamine™ Products and Pipe

Style 2970

AQUAMINE™ COUPLING FOR PLAIN END PVC

Refer to publication 50.01



Size inches	Victaulic Part No.	Price Each
2	C0209700TL	\$500.00
3	C0309700TL	581.00
4	C0409700TL	742.00
6	C0609700TL	882.50
8	C0809700TL	1142.00

NOTE: Items listed in shaded areas are non-cancellable and non-returnable.

Style 2971

AQUAMINE™ TRANSITION COUPLING FOR PVC TO HDPE

Refer to publication 50.05



Size inches	Victaulic Part No.	Price Each
2	C0209710TL	\$500.00
3	C0309710TL	581.00
4	C0409710TL	742.00
6	C0609710TL	882.50
8	C0809710TL	1142.00

NOTE: Items listed in shaded areas are non-cancellable and non-returnable.

Style 2972

AQUAMINE™ TRANSITION COUPLING FOR PVC TO GROOVE

Refer to publication 50.06



Size inches	Victaulic Part No.	Price Each
2	C0209720TL	\$550.00
3	C0309720TL	641.50
4	C0409720TL	814.00
6	C0609720TL	969.50
8	C0809720TL	1258.00

NOTE: Items listed in shaded areas are non-cancellable and non-returnable.

Series 2906

MALE X PLAIN END MALE ADAPTER NIPPLE

Refer to publication 50.01



Size inches	Victaulic Part No.	PSI	Price Each
2	F02090600K	250	\$41.00
3	F03090600K	250	64.50
4	F04090600K	250	84.00
6	F06090600K	250	147.00
8	F08090600I	200	231.00
10	F10090600G	160	355.50
12	F12090600G	160	492.00

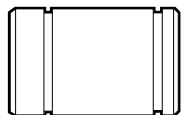
NOTE: Items listed in shaded areas are non-cancellable and non-returnable.

Aquamine™ Products and Pipe

Series 2907

MALE X VICTAULIC® OGS GROOVE ADAPTER NIPPLE

Refer to publication 50.01



Size inches	Victaulic Part No.	PSI	Price Each
2	F02090700K	250	\$44.50
3	F03090700K	250	65.00
4	F04090700J	240	85.00
4 *	F04090790L	350	260.00
6	F06090700G	160	149.50
6 *	F06090790L	350	428.00
8	F08090700D	120	238.50
8*	F08090790L	350	620.00
10	F10090700B	100	423.00
12	F12090700A	80	555.00

NOTE: Items listed in shaded areas are non-cancellable and non-returnable.

* High pressure nipple

Series 2908

MALE X MALE NPT ADAPTER NIPPLE

Refer to publication 50.01



Size inches	Victaulic Part No.	PSI	Price Each
2	F02090800I	200	\$61.00
2*	F02090890K	250	217.00
3	F03090800H	190	87.50
3	F03090890L	250	316.00
4	F04090800G	160	124.00
4*	F04090890L	350	369.50
6	F06090800E	140	213.00
6*	F06090890L	350	538.50
8	F08090800D	120	378.00
8*	F08090890L	350	1044.50
10	F10090800D	120	482.00
12	F12090800C	110	619.50

NOTE: Items listed in shaded areas are non-cancellable and non-returnable.

* High pressure nipple

Series 2909

PLAIN END MALE X MALE NPT ADAPTER NIPPLE

Refer to publication 50.01



Size inches	Victaulic Part No.	PSI	Price Each
2	F02090900I	200	\$61.00
3	F03090900H	190	88.00
4	F04090900G	160	130.00
6	F06090900E	140	218.50
8	F08090900D	120	382.00
10	F10090900D	120	428.00
12	F12090900C	110	536.50

NOTE: Items listed in shaded areas are non-cancellable and non-returnable.

Aquamine™ Products and Pipe

Series 2910

MALE X MALE 90° ELBOW
Refer to publication 50.01



Size inches	Victaulic Part No.	PSI	Price Each
2	F02091000K	250	\$170.50
3	F03091000K	250	237.50
4	F04091000K	250	384.50
6	F06091000K	250	607.50
8	F08091000I	200	1162.50
10	F10091000G	160	2941.00
12	F12091000G	160	4687.50

NOTE: Items listed in shaded areas are non-cancellable and non-returnable.

Series 2912

MALE X MALE 45° ELBOW
Refer to publication 50.01



Size inches	Victaulic Part No.	PSI	Price Each
2	F02091200K	250	\$171.00
3	F03091200K	250	273.00
4	F04091200K	250	415.50
6	F06091200K	250	685.00
8	F08091200I	200	1172.50
10	F10091200G	160	2231.00
12	F12091200G	160	3153.00

NOTE: Items listed in shaded areas are non-cancellable and non-returnable.

Series 2913

MALE X MALE 90° SWEEP
Refer to publication 50.01



Size inches	Victaulic Part No.	PSI	Price Each
2	F02091300K	250	\$237.00
3	F03091300K	250	319.50
4	F04091300K	250	500.00
4 *	F04091300L	350	691.50
6	F06091300K	250	1113.00
6 *	F06091300L	350	1417.50
8	F08091300I	250	1792.00
8 *	F08091300L	350	2000.50
10	F10091300G	160	3966.00
12 (f)	F12091300G	160	5415.00

NOTE: Items listed in shaded areas are non-cancellable and non-returnable.

* High pressure nipple

(f) = Fabricated fitting

Aquamine™ Products and Pipe

Series 2914

MALE X MALE 45° SWEEP
Refer to publication 50.01



Size inches	Victaulic Part No.	PSI	Price Each
2	F02091400K	250	\$170.50
3	F03091400K	250	237.00
4	F04091400K	250	316.00
4 *	F04091400L	350	446.50
6	F06091400K	250	685.00
6 *	F06091400L	350	814.00
8	F08091400I	250	1582.50
8 *	F08091400L	350	1831.50
10 (f)	F10091400G	160	2876.50
12 (f)	F12091400G	160	4107.00

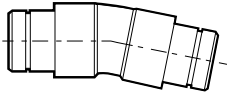
NOTE: Items listed in shaded areas are non-cancellable and non-returnable.

* High pressure nipple

(f) = Fabricated fitting

Series 29102

MALE X MALE 11¼° ELBOW
Refer to publication 50.01

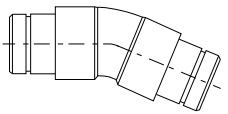


Size inches	Victaulic Part No.	PSI	Price Each
2	F02091020K	250	\$210.50
3	F03091020K	250	379.00
4	F04091020K	250	492.00
6	F06091020K	250	804.00
8	F08091020I	200	1169.00
10	F10091020G	160	1942.00
12	F12091020G	160	2762.50

NOTE: Items listed in shaded areas are non-cancellable and non-returnable.

Series 2911

MALE X MALE 22½° ELBOW
Refer to publication 50.01



Size inches	Victaulic Part No.	PSI	Price Each
2	F02091100K	250	\$226.00
3	F03091100K	250	382.50
4	F04091100K	250	550.50
6	F06091100K	250	1044.50
8	F08091100I	200	1169.00
10	F10091100G	160	1942.00
12	F12091100G	160	2762.50

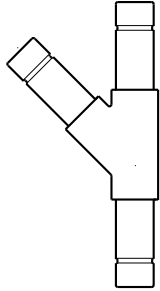
NOTE: Items listed in shaded areas are non-cancellable and non-returnable.

Aquamine™ Products and Pipe

Aqua Link

MALE X MALE X MALE LATERAL WYE

Contact Victaulic for Details.



Size inches	Victaulic Part No.	PSI	Price Each
2	F02091790K	235	\$382.50
3	F03091790K	150	1069.50
4	F04091790K	150	1565.00
6	F06091790K	150	1787.00
8	F08091790I	100	3946.00
10	F10091790G	100	6359.50
12	F12091790G	100	8285.00

NOTE: Items listed in shaded areas are non-cancellable and non-returnable.

Series 2915

MALE END CAP

Refer to publication 50.01



Size inches	Victaulic Part No.	PSI	Price Each
2	F02091500K	250	\$112.50
3	F03091500K	250	193.50
4	F04091500K	250	355.00
6	F06091500K	250	776.00
8	F08091500I	200	966.00
10	F10091500G	160	1600.00
12	F12091500G	160	2323.00

NOTE: Items listed in shaded areas are non-cancellable and non-returnable.

Series 2916

MALE X FLANGED ADAPTER NIPPLE

Refer to publication 50.01



Size inches	Victaulic Part No.	PSI	Price Each
2	F02091600F	150	\$170.50
3	F03091600F	150	237.50
4	F04091600F	150	289.50
6	F06091600F	150	476.50
8	F08091600F	150	690.00
10	F10091600F	150	1399.00
12	F12091600F	150	1863.00

NOTE: Items listed in shaded areas are non-cancellable and non-returnable.

Aquamine™ Products and Pipe

Series 2917

MALE X MALE X MALE TEE
Refer to publication 50.01



Size inches	Victaulic Part No.	PSI	Price Each
2	F02091700K	250	\$239.50
3	F03091700K	250	367.00
4	F04091700K	250	516.00
6	F06091700K	250	957.00
8	F08091700I	200	1690.00
10	F10091700G	160	4029.50
12	F12091700G	160	5689.50

NOTE: Items listed in shaded areas are non-cancellable and non-returnable.

Series 2918

MALE X MALE X MALE REDUCING TEE
Refer to publication 50.01



Size inches	Victaulic Part No.	PSI	Price Each
3 x 3 x 2	FC6891800K	250	\$405.00
4 x 4 x 2	FD7491800K	250	658.50
	FD7991800K	250	707.50
6 x 6 x 2	FF0191800K	250	1311.00
	FF0591800K	250	1352.00
	FF0991800K	250	1237.00
8 x 8 x 4	FF6891800I	200	2278.50
	FF7391800I	200	2141.50

NOTE: Items listed in shaded areas are non-cancellable and non-returnable.

Series 2919

FEMALE X MALE REDUCER
Refer to publication 50.01



Size inches	Victaulic Part No.	PSI	Price Each
3 x 2	FC439190IK	250	\$291.00
4 x 2	FD299190IK	250	325.50
	FD449190IK	250	344.00
6 x 2	FE619190IK	250	710.00
	FE719190IK	250	733.50
	FE799190IK	250	757.50
8 x 2	FF309190II	200	1044.50
	FF389190II	200	1044.50
	FF479190II	200	1014.50
10 x 8	FF969190IG	160	2558.00
12 x 8	FG359190IG	160	2897.50

NOTE: Items listed in shaded areas are non-cancellable and non-returnable.

Aquamine™ Products and Pipe

Series 2920

MALE X SOLVENT CEMENT FEMALE TRANSITION FITTING

Refer to publication 50.01



Size inches	Victaulic Part No.	PSI	Price Each
2	F02092000K	250	\$103.00
3	F03092000K	250	138.00
4	F04092000K	250	170.50
6	F06092000K	250	277.50
8	F08092000I	200	496.50
10	F10092000G	160	750.50
12	F12092000G	160	876.50

NOTE: Items listed in shaded areas are non-cancellable and non-returnable.

Series 2940

FEMALE X MALE TRANSITION WITH FEMALE NPT OUTLET

Refer to publication 50.01



Size inches	Victaulic Part No.	PSI	Price Each
2 x 2 x $\frac{3}{4}$	FB729400IK	250	\$174.00
	FB739410IK	250	183.00
3 x 3 x $\frac{3}{4}$	FC609400IK	250	224.00
	FC629410IK	250	224.00
	FC649430IJ	240	229.00
4 x 4 x $\frac{3}{4}$	FD669400IK	250	260.50
	FD679410IK	250	260.50
	FD729430IJ	240	269.50
6 x 6 x $\frac{3}{4}$	FK209400IK	250	446.50
	FE999410IK	250	446.50
	FF009430IJ	240	446.50
	FF019440II	200	446.50
8 x 8 x $\frac{3}{4}$	FF589400II	200	726.50
	FF599410II	200	726.50
	FF619430II	200	726.50
	FF629440II	200	726.50
10 x 10 x $\frac{3}{4}$	FG029400IG	160	945.50
	FG039410IG	160	953.50
	FG059430IG	160	965.50
	FG069440IG	160	1004.00
12 x 12 x $\frac{3}{4}$	FG469400IG	160	1473.00
	FG479410IG	160	1473.00
	FG499430IG	160	1473.00
	FG509440IG	160	1473.00

NOTE: Items listed in shaded areas are non-cancellable and non-returnable.

Aquamine™ Products and Pipe

Series 2957

AQUAMINE™ BUTTERFLY VALVE



Size inches	Series 2957 with Lever Handle		Series 2957 with Gear Operator	
	Victaulic Part No.	Price Each	Victaulic Part No.	Price Each
2	V020957PE2	\$1037.50	V020957PE3	\$2444.50
3	V030957PE2	1356.00	V030957PE3	2763.00
4	V040957PE2	1745.50	V040957PE3	3152.50
6	V060957PE2	2907.50	V060957PE3	4314.50
8	V080957PE2	3779.00	V080957PE3	5185.50

NOTE: Items listed in shaded areas are non-cancellable and non-returnable.

Splines

(STRAWS)

Refer to publication 50.01

Size inches	Victaulic Part No.	Price Each
2	P02099900K	\$17.50
3	P03099900K	22.45
4	P04099900K	27.05
4 *	P04099900L	42.70
6	P06099900K	30.20
6 *	P06099900L	51.95
8	P08099900I	41.00
8 *	P08099900L	72.30
10	P10099900I	101.80
12	P12099900I	101.80

NOTE: Items listed in shaded areas are non-cancellable and non-returnable.

* High pressure spline

O-rings

Refer to publication 50.01

Size inches	Victaulic Part No.	Price Each
2	G0209999IK	\$6.70
3	G0309999IK	13.10
4	G0409999IK	17.50
4 *	G0409999IL	17.50
6	G0609999IL	22.45
6 *	G0609999IL	22.45
8	G0809999IL	25.55
8 *	G0809999IL	25.55
10	G1009999II	30.20
12	G1209999II	42.70

NOTE: Items listed in shaded areas are non-cancellable and non-returnable.

* High pressure o-ring

Aquamine™ Products and Pipe

Replacement Gaskets for Style 2970 and Style 2971

GASKETS

Size inches	Victaulic Part No.	Price Each
2	G020099LTO	\$106.00
3	G030099LTO	123.00 ^{NR}
4	G040099LTO	175.50
6	G060099LTO	251.50
8	G080099LTO	325.50

NOTE: Items listed in shaded areas are non-cancellable and non-returnable.

^{NR} Non-returnable

Replacement Hardware for Style 2970, Style 2971, and Style 2972

BOLTS AND NUTS

Coupling Size inches	Victaulic Part No.	Bolt and Nut Size inches	Price Each
2	BA42000Z10	1/2 x 2 1/2	\$45.50 ^{NR}
3	BA43000Z10	1/2 x 2 3/4	45.50 ^{NR}
4	BA43000Z10	1/2 x 2 3/4	45.50 ^{NR}
6	BA53000Z10	5/8 x 3 1/4	50.00 ^{NR}
8	BA53000Z10	5/8 x 3 1/4	50.00 ^{NR}

^{NR} Non-returnable

Spline Insertion Tool

SPLINE INSERTION TOOL



Size inches	Victaulic Part No.	Price Each
2	T02091880K	\$580.30
3 – 8	T03091880L	580.30
10 – 12	T10091880K	580.30

NOTE: Items listed in shaded areas are non-cancellable and non-returnable.

APG Tool

AQUAMINE™ GROOVING TOOL FOR PVC PIPE

Refer to publication 50.01



Description	Part Number	Price Each
Aquamine PVC Pipe Groover	T000413APG	\$17757.50
4"/6" Replacement Cutter Blade	TK04413MCH	3758.00
8" Replacement Cutter Blade	TK08413MCH	3758.00
10"/12" Replacement Cutter Blade	TK12413MCH	3758.00

NOTE: Items listed in shaded areas are non-cancellable and non-returnable.

1.0 TERMS AND CONDITIONS OF SALE

No alteration, modification or waiver of these terms and conditions whether on Customer's purchase order or otherwise shall be valid unless the alteration, modification or waiver is specifically accepted in writing by an authorized representative of Victaulic. These terms and conditions are subject to change without notice:

- 1. Prices:** Quoted are subject to change at any time unless specifically stated within the price quotation.
- 2. Force Majeure:** Victaulic shall not be liable for any delay or failures in making delivery where occasioned by strikes or differences with workmen or by any causes beyond the control of Victaulic, such as but not limited to, fires, floods, accidents, epidemic, action of any government authority, or shortages of labor, raw materials, production facilities or transportation.
- 3. Product Changes:** Victaulic reserves the right to alter, modify, or redesign its products without liability for obsolescence.
- 4. Taxes:** All federal, state or local sales or use of similar taxes shall be for the Customer's account.
- 5. Terms: Pipe and fittings, solvent, lubricant and other accessories:** Our standard terms are net 30 days. The seller reserves the right to charge 1½% monthly service charge (or the maximum permitted by law), of any past due, unpaid balances.
- 6. List Price: Discount or Freight Changes:** List prices of pipe, fittings, etc., discounts and freight terms are subject to change without notice.
- 7. Order Acceptance or Rejection:** Victaulic reserves the right to accept or reject any order. Possession of a price list does not constitute an offer to sell.
- 8. Credit Approval:** Customer credit approval is required prior to any shipments. Should customer's financial responsibility become unsatisfactory, cash payments or satisfactory security may be required prior to delivery.
- 9. Shipping Terms:** Aquamine pipe is shipped in convenient 20-foot lengths and is packaged in palletized units. Shipping and handling charges will be paid by the customer F.O.B. Victaulic's facility in Bristol, TN. The most economical rate and routing to recognized delivery points will be used at our discretion. Any order amounts for Aquamine pipe which do not constitute even "Fast Pack" quantities, as defined in the current Aquamine catalog will be subject to a \$35 per pack "Broken Pack" surcharge. This amount will be charged for each pack on each order, which fails to meet the standard packaging criteria. The broken pack charge will be calculated and assessed in addition to any other shipping fees or surcharges. Where customer requests special packaging or handling, the additional cost will be billed to the customer.
- 10. Damage, Loss or Shortage Claims:** Upon receipt of order, customer must check for accountability and acceptability of goods. Any damage, loss or shortage should be reported to the driver and noted on his billing papers.

In the event that a common carrier is retained by Victaulic on Customer's behalf to deliver shipments to customer's requested point of delivery, the risk of any damage or loss to said shipment shall pass to the Customer upon delivery of the shipment by Victaulic to the carrier even though Victaulic may agree to be responsible for the costs of shipment. Shipments must be inspected for damage or loss or shortage upon receipt by consignee prior to acceptance from the carrier. Any damage or loss claims must be made to the carrier. Victaulic will not be liable in any manner for damage or loss caused to a shipment by a common carrier. Shortage of material claims regardless of "mode of shipment" must be submitted in writing to Victaulic within 30 days of invoice date.

- 11. Cancellation:** Non-Standard or customer produced pipe and/or fittings are not subject to Customer's cancellation once production has begun.
- 12. Non-Standard Products:**

Definition A. Piping: This is a piping product which the plant servicing the customer has the capability of producing but does not inventory, or does not have the capability of producing. In these instances, the customer should check for availability and minimum quantity required to process order.

Definition B. Fittings: As defined on the price pages, or those "welded-up" especially for the Customer. Fittings not shown by Victaulic which must be specially fabricated must be submitted for consideration, advising quantity and pertinent details, through your local sales representative for availability and pricing.
- 13. Returned Materials:** Forward individual request to Victaulic. Materials cannot be returned without prior approval and written authorization issued by Victaulic. Material returned without prior approval and written authorization will not be accepted at the plant. A restocking charge and freight costs of returned material (and out-freight if applicable) will be charged to the account of the customer.

In addition, the Victaulic Quality Control Department will determine acceptability of returned material for restocking and resalability. Credit will be issued on resalable material only.
- 14. Delivery:** Quoted deliveries are based on estimates at the time of quotation. Victaulic will devote its best efforts to meeting delivery schedules but assumes no liability for additional direct, consequential, or incidental costs or damages resulting from late deliveries.

2.0 LIMITED WARRANTY

What is Covered: This warranty covers any defects in materials or workmanship in Standard products, and defects in dimensional requirements of Non-Standard products sold by Victaulic occurring under normal conditions of use and service with the exceptions stated below.

How Long Coverage Lasts: This warranty runs for six months from the date of delivery to the original buyer.

What is Not Covered: This warranty shall not apply to any product which has been subject to misuse, negligence, or accident (such as, without limitation, exposure to incompatible chemical or corrosive agents including microbial corrosion), which has been repaired or altered in any manner outside of Victaulic's factory, or which has been used in a manner contrary to Victaulic's instructions or recommendations. Because Victaulic cannot be assured that solvent weld pipe will be installed by persons fully acquainted with proper installation techniques and the limitations upon such techniques caused by variations in installation conditions, Victaulic DOES NOT WARRANT AND WILL NOT BE RESPONSIBLE OR LIABLE FOR ANY EXPENSES, DAMAGES OR LOSSES WHATSOEVER CAUSED BY, OR RELATED TO THE FAILURE OF ANY SOLVENT WELD JOINT OR BY DEFECTIVE SOLVENT USED IN MAKING ANY SUCH JOINT OTHER THAN SUCH JOINTS MADE BY VICTAULIC AT VICTAULIC'S FACILITIES. **Victaulic shall not be responsible for design errors due to inaccurate or incomplete information supplied by Buyer or its representatives.**

What Victaulic will do: Victaulic will repair or replace, at its option, any product that proves to be defective in materials, workmanship, or dimensional requirements as set forth following an examination by Victaulic that shows to its satisfaction the product was defective in materials or workmanship.

THIS LIMITED WARRANTY IS EXCLUSIVE AND MADE EXPRESSLY IN LIEU OF ANY OTHER WARRANTIES, EXPRESS OR IMPLIED, INCLUDING ANY IMPLIED WARRANTY OF MERCHANTABILITY OR FITNESS FOR A PARTICULAR PURPOSE. THE BUYER'S SOLE AND EXCLUSIVE REMEDY SHALL BE FOR THE REPAIR OR REPLACEMENT OF DEFECTIVE PRODUCTS AS PROVIDED HEREIN. THE BUYER AGREES THAT NO OTHER REMEDY (INCLUDING, BUT NOT LIMITED TO, INCIDENTAL OR CONSEQUENTIAL DAMAGES FOR LOST PROFITS, LOST SALES, INJURY TO PERSON OR PROPERTY OR ANY OTHER INCIDENTAL OR CONSEQUENTIAL LOSS) SHALL BE AVAILABLE.

Victaulic neither assumes nor authorizes any person to assume for it any other liability in connection with the sale of products.

Items purchased by Victaulic and resold will have the original equipment manufacturer's warranty extended to Victaulic customers.

How to Get Service: Contact Victaulic at 610-559-3300 within six months after delivery to the original buyer to arrange for an examination of the product. You will be asked to ship the product to Victaulic's factory, postage and transportation charges prepaid, for examination. There is no charge for examination. Victaulic will examine the product and contact you within a reasonable time regarding the results of that examination and to arrange for repair or replacement of any product determined to be defective in materials or workmanship.

PRODUCTS & PIPE

AQUAMINE PRICE LIST



U.S./World Headquarters

4901 Kesslersville Road
Easton, PA 18040 USA

victauliclocations.com

EMEA

Prijkelstraat 36
9810 Nazareth, Belgium

Asia Pacific

Unit 808, Building B
Hongwell International Plaza
No.1602 West Zhongshan Road
Shanghai, China 200235



PL2024-AMP 20707 REV A 04/2024

Victaulic and all other Victaulic marks are the trademarks or registered trademarks of Victaulic Company, and/or its affiliated entities, in the U.S. and/or other countries. All other trademarks listed herein are the property of their respective holders, in the U.S. and/or other countries. The terms "Patented" or "Patent Pending" refer to design or utility patents or patent applications for articles and/or methods of use in the United States and/or other countries.

© 2024 VICTAULIC COMPANY. ALL RIGHTS RESERVED.

