



PRODUCTS AND PIPE

AQUAMINE PRICE LIST

PL2025-A-AMP
Effective July 1, 2025



ENGINEERING CONFIDENCE INTO EVERY BUILD



Around the world and across diverse business lines, Victaulic provides durable pipe joining solutions that solve the construction industry's toughest challenges.

Since 1919, Victaulic's innovative piping products and design services continue to **increase construction productivity** and **reduce risk, ensuring projects are completed safely, on time and within budget.**

With more than 40 international facilities, Victaulic helps customers in 140 countries succeed in the global construction industry.

FIRE PROTECTION | HVAC | PLUMBING | OIL & GAS | MINING | WATER & WASTEWATER | POWER GENERATION | MARITIME



victaulic.com

© 2024 VICTAULIC COMPANY. ALL RIGHTS RESERVED.
Source: skyscrapercenter.com and the Council on Tall Buildings and Urban Habitat



Table of Contents

Pipe

Series 2900 Aquamine™ PVC Pipe with Coupling	2
Series 2900 Aquamine™ PVC Pipe With Beveled Coupling	2
Aquamine™ Pipe.	2

Couplings

Series 2904 Aquamine™ Female to Female Coupling	3
Aquamine™ Female to Female Beveled Coupling.	3
Series 2905 Aquamine™ Female to Solvent Cement Female Coupling	3
Series 2930 Aquamine™ Female to Female NPT Female Outlet Coupling.	4
Series 2937, Series 2938, and Series 2939 Female to Female Coupling with Female NPT Formed Outlet	4
Style 2970 Aquamine™ Coupling for Plain End PVC	5
Style 2971 Aquamine™ Transition Coupling for PVC to HDPE	5
Style 2972 Aquamine™ Transition Coupling for PVC to Groove	5

Fittings

Series 2906 Male x Plain End Male Adapter Nipple	5
Series 2907 Male x Victaulic® OGS Groove Adapter Nipple.	6
Series 2908 Male x Male NPT Adapter Nipple	6
Series 2909 Plain End Male x Male NPT Adapter Nipple	6
Series 2910 Male x Male 90° Elbow.	7
Series 2912 Male x Male 45° Elbow.	7
Series 2913 Male x Male 90° Sweep	7
Series 2914 Male x Male 45° Sweep	8

Series 29102 Male x Male 11¼° Elbow	8
Series 2911 Male x Male 22½° Elbow.	8
Aqua Link Male x Male x Male Lateral Wye	9
Series 2915 Male End Cap	9
Series 2916 Male x Flanged Adapter Nipple.	9
Series 2917 Male x Male x Male Tee	10
Series 2918 Male x Male x Male Reducing Tee	10
Series 2919 Female x Male Reducer	10
Series 2920 Male x Solvent Cement Female Transition Fitting.	11
Series 2940 Female x Male Transition with Female NPT Outlet.	11

Valves

Series 2957 Aquamine™ Butterfly Valve	12
---	----

Spare Parts

Splines	12
O-rings	12
Replacement Gaskets for Style 2970 and Style 2971	13
Replacement Hardware for Style 2970, Style 2971, and Style 2972.	13

Tools

Spline Insertion Tool	13
APG Aquamine™ Grooving Tool for PVC Pipe	13
Terms and Conditions of Sale	Inside Back Cover
Warranty.	Inside Back Cover

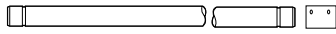
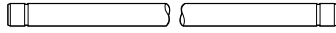
Aquamine™ Products and Pipe

Series 2900

AQUAMINE™ PVC PIPE WITH COUPLING

AQUAMINE™ PVC PIPE WITH BEVELED COUPLING

Refer to publication 50.01



Size	Victaulic Part No.		Standard Dimension Ratio		
inches	Pipe with Coupling	Pipe with Beveled Coupling	(SDR)	PSI	Price per Foot
2	T0209000IK	T0209002IK	17	250	\$16.40
2	T0209000II	T0209002II	21	200	15.15
3	T0309000IK	T0309002IK	17	250	30.05
3	T0309000II	T0309002II	21	200	26.70
4	T0409000IL	T0409002IL	12.4	350	59.60
4	T0409000IK	T0409002IK	17	250	47.00
4	T0409000II	T0409002II	21	200	40.15
4	T0409000IG	T0409002IG	26	160	35.40
6	T0609000IL	T0609002IL	12.4	350	123.25
6	T0609000IK	T0609002IK	17	250	88.30
6	T0609000II	T0609002II	21	200	74.00
6	T0609000IG	T0609002IG	26	160	66.80
8	T0809000IL	T0809002IL	12.4	350	202.50
8	T0809000IK	T0809002IK	17	250	160.05
8	T0809000II	T0809002II	21	200	131.90
8	T0809000IG	T0809002IG	26	160	112.40
10	T1009000IG	T1009002IG	26	160	172.70
12	T1209000IG	T1209002IG	26	160	233.00

NOTE: Items listed in shaded areas are non-cancellable and non-returnable.

Aquamine™ Pipe Only

Refer to publication 50.01

Size inches	Victaulic Part No.	Standard Dimension Ratio (SDR)	PSI	Price per Foot
2	T02090100K	17	250	\$12.10
2	T02090100I	21	200	10.70
3	T03090100K	17	250	24.00
3	T03090100I	21	200	20.15
4	T04090100L	12.4	350	46.30
4	T04090100K	17	250	38.10
4	T04090100I	21	200	31.95
4	T04090100G	26	160	26.70
6	T06090100L	12.4	350	102.30
6	T06090100K	17	250	74.85
6	T06090100I	21	200	61.00
6	T06090100G	26	160	53.40
8	T08090100L	12.4	350	168.80
8	T08090100K	17	250	131.30
8	T08090100I	21	200	106.90
8	T08090100G	26	160	87.65
10	T10090100G	26	160	136.25
12	T12090100G	26	160	184.65

NOTE: Items listed in shaded areas are non-cancellable and non-returnable.

Aquamine™ Products and Pipe

Series 2904

AQUAMINE™ FEMALE TO FEMALE COUPLING

Refer to publication 50.01



Size inches	Victaulic Part No.	PSI	Price Each
2	C0209040IK	250	\$96.50
3	C0309040IK	250	132.00
4	C0409040IK	250	167.00
4 *	C0409040IL	350	257.50
6	C0609040IK	250	253.00
6 *	C0609040IL	350	389.00
8	C0809040II	200	464.50
8 †	C0809040IK	250	539.50
8 *	C0809040IL	350	620.00
10	C1009040IG	160	672.50
12	C1209040IG	160	891.50

NOTE: Items listed in shaded areas are non-cancellable and non-returnable.

* High pressure coupling

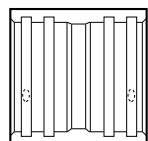
† Coupling with high pressure spline

Series 2904

AQUAMINE™ FEMALE TO FEMALE BEVELED COUPLING

For Directional Drilling and other applications where pipe is pulled

Refer to publication 50.01



Size inches	Victaulic Part No.	PSI	Price Each
2	C0209041IK	250	\$96.50
3	C0309041IK	250	132.00
4	C0409041IK	250	167.00
4 *	C0409041IL	350	257.50
6	C0609041IK	250	253.00
6 *	C0609041IL	350	389.00
8	C0809041II	200	464.50
8 †	C0809041IK	250	539.50
8 *	C0809041IL	350	620.00
10	C1009041IG	160	672.50
12	C1209041IG	160	891.50

NOTE: Items listed in shaded areas are non-cancellable and non-returnable.

* High pressure coupling

† Coupling with high pressure spline

Series 2905

AQUAMINE™ FEMALE TO SOLVENT CEMENT FEMALE COUPLING

Refer to publication 50.01



Size inches	Victaulic Part No.	PSI	Price Each
2	C0209050IK	250	\$77.50
3	C0309050IK	250	105.50
4	C0409050IK	250	130.00
6	C0609050IK	250	216.50
8	C0809050II	200	402.00
10	C1009050IG	160	621.00
12	C1209050IG	160	805.00

NOTE: Items listed in shaded areas are non-cancellable and non-returnable.

Aquamine™ Products and Pipe

Series 2930

**AQUAMINE™ FEMALE TO
FEMALE NPT FEMALE OUTLET
COUPLING**

(Tapped Female Pipe Threads)

Refer to publication 50.01



Size inches				Victaulic Part No.	PSI	Price Each
2	x	2	x	$\frac{3}{4}$	CB729300II	\$130.00
				1	CB739310II	130.00
3	x	3	x	$\frac{3}{4}$	CC609300II	174.50
				1	CC629310II	174.50
				$1\frac{1}{2}$	CC649330IG	174.50
4	x	4	x	$\frac{3}{4}$	CD669300II	211.00
				1	CD679310II	211.00
				$1\frac{1}{2}$	CD729330IG	211.00
				2	CD749350IG	249.00
6	x	6	x	$\frac{3}{4}$	CK209300II	392.50
				1	CE999310II	392.50
				$1\frac{1}{2}$	CF009330II	392.50
				2	CF019350IG	392.50
8	x	8	x	$\frac{3}{4}$	CF589300II	570.50
				1	CF599310II	570.50
				$1\frac{1}{2}$	CF619330II	570.50
				2	CF629350IG	570.50
10	x	10	x	$\frac{3}{4}$	CG029300IG	727.00
				1	CG039310IG	735.50
				$1\frac{1}{2}$	CG059330IG	744.50
				2	CG069350IG	794.50
12	x	12	x	$\frac{3}{4}$	CG469300IG	958.50
				1	CG479310IG	969.00
				$1\frac{1}{2}$	CG499330IG	976.00
				2	CG509350IG	1022.50

NOTE: Items listed in shaded areas are non-cancellable and non-returnable.

Series 2937

Series 2938

Series 2939

**FEMALE TO FEMALE COUPLING
WITH FEMALE NPT FORMED
OUTLET**

Refer to publication 50.04



Size inches				Victaulic Part No.	PSI	Price Each
2	x	2	x	1	CB739370IK	\$174.50
3	x	3	x	1	CC629370IK	232.50
				$1\frac{1}{2}$	CC649380IK	232.50
4	x	4	x	1	CD679370IK	290.00
				$1\frac{1}{2}$	CD729380IK	290.00
				2	CD749390IK	290.00
6	x	6	x	1	CE999370IK	427.50
				$1\frac{1}{2}$	CF009380IK	427.50
				2	CF019390IK	427.50

NOTE: Items listed in shaded areas are non-cancellable and non-returnable.

Aquamine™ Products and Pipe

Style 2970

AQUAMINE™ COUPLING FOR PLAIN END PVC

Refer to publication 50.01



Size inches	Victaulic Part No. for Coupling with Grade "E" Gasket	Victaulic Part No. for Coupling with Grade "T" Gasket	Price Each
2	C0209700EL	C0209700TL	\$564.50
3	C0309700EL	C0309700TL	656.50
4	C0409700EL	C0409700TL	838.50
6	C0609700EL	C0609700TL	996.50
8	C0809700EL	C0809700TL	1290.00

NOTE: Items listed in shaded areas are non-cancellable and non-returnable.

Style 2971

AQUAMINE™ TRANSITION COUPLING FOR PVC TO HDPE

Refer to publication 50.05



Size inches	Victaulic Part No. for Coupling with Grade "E" Gasket	Victaulic Part No. for Coupling with Grade "T" Gasket	Price Each
2	C0209710EL	C0209710TL	\$564.50
3	C0309710EL	C0309710TL	656.50
4	C0409710EL	C0409710TL	838.50
6	C0609710EL	C0609710TL	996.50
8	C0809710EL	C0809710TL	1290.00

NOTE: Items listed in shaded areas are non-cancellable and non-returnable.

Style 2972

AQUAMINE™ TRANSITION COUPLING FOR PVC TO GROOVE

Refer to publication 50.06



Size inches	Victaulic Part No. for Coupling with Grade "T" Gasket	Price Each
2	C0209720TL	\$621.00
3	C0309720TL	724.50
4	C0409720TL	919.50
6	C0609720TL	1095.00
8	C0809720TL	1420.50

NOTE: Items listed in shaded areas are non-cancellable and non-returnable.

Series 2906

MALE X PLAIN END MALE ADAPTER NIPPLE

Refer to publication 50.01



Size inches	Victaulic Part No.	PSI	Price Each
2	F02090600K	250	\$46.50
3	F03090600K	250	73.00
4	F04090600K	250	95.50
6	F06090600K	250	166.50
8	F08090600I	200	261.00
10	F10090600G	160	402.00
12	F12090600G	160	556.00

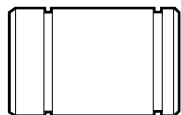
NOTE: Items listed in shaded areas are non-cancellable and non-returnable.

Aquamine™ Products and Pipe

Series 2907

MALE X VICTAULIC® OGS GROOVE ADAPTER NIPPLE

Refer to publication 50.01



Size inches	Victaulic Part No.	PSI	Price Each
2	F02090700K	250	\$51.00
3	F03090700K	250	73.50
4	F04090700J	240	96.50
4 *	F04090790L	350	294.00
6	F06090700G	160	169.00
6 *	F06090790L	350	484.00
8	F08090700D	120	269.50
8*	F08090790L	350	700.50
10	F10090700B	100	478.00
12	F12090700A	80	627.00

NOTE: Items listed in shaded areas are non-cancellable and non-returnable.

* High pressure nipple

Series 2908

MALE X MALE NPT ADAPTER NIPPLE

Refer to publication 50.01



Size inches	Victaulic Part No.	PSI	Price Each
2	F02090800I	200	\$69.50
2*	F02090890K	250	245.50
3	F03090800H	190	99.50
3*	F03090890L	250	357.00
4	F04090800G	160	140.50
4*	F04090890L	350	417.50
6	F06090800E	140	241.00
6*	F06090890L	350	608.50
8	F08090800D	120	427.50
8*	F08090890L	350	1179.50
10	F10090800D	120	544.50
12	F12090800C	110	700.00

NOTE: Items listed in shaded areas are non-cancellable and non-returnable.

* High pressure nipple

Series 2909

PLAIN END MALE X MALE NPT ADAPTER NIPPLE

Refer to publication 50.01



Size inches	Victaulic Part No.	PSI	Price Each
2	F02090900I	200	\$69.50
3	F03090900H	190	100.00
4	F04090900G	160	147.00
6	F06090900E	140	247.50
8	F08090900D	120	431.50
10	F10090900D	120	484.00
12	F12090900C	110	606.00

NOTE: Items listed in shaded areas are non-cancellable and non-returnable.

Aquamine™ Products and Pipe

Series 2910

MALE X MALE 90° ELBOW

Refer to publication 50.01



Size inches	Victaulic Part No.	PSI	Price Each
2	F02091000K	250	\$193.00
3	F03091000K	250	268.50
4	F04091000K	250	435.00
6	F06091000K	250	686.00
8	F08091000I	200	1313.00
10	F10091000G	160	3320.50
12	F12091000G	160	5292.00

NOTE: Items listed in shaded areas are non-cancellable and non-returnable.

Series 2912

MALE X MALE 45° ELBOW

Refer to publication 50.01



Size inches	Victaulic Part No.	PSI	Price Each
2	F02091200K	250	\$193.50
3	F03091200K	250	308.50
4	F04091200K	250	469.50
6	F06091200K	250	774.00
8	F08091200I	200	1324.00
10	F10091200G	160	2519.00
12	F12091200G	160	3560.00

NOTE: Items listed in shaded areas are non-cancellable and non-returnable.

Series 2913

MALE X MALE 90° SWEEP

Refer to publication 50.01



Size inches	Victaulic Part No.	PSI	Price Each
2	F02091300K	250	\$268.00
3	F03091300K	250	361.50
4	F04091300K	250	564.50
4 *	F04091300L	350	781.00
6	F06091300K	250	1257.00
6 *	F06091300L	350	1601.00
8	F08091300I	250	2023.50
8 *	F08091300L	350	2259.00
10	F10091300G	160	4477.50
12 (f)	F12091300G	160	6113.50

NOTE: Items listed in shaded areas are non-cancellable and non-returnable.

* High pressure nipple

(f) = Fabricated fitting

Aquamine™ Products and Pipe

Series 2914

MALE X MALE 45° SWEEP

Refer to publication 50.01



Size inches	Victaulic Part No.	PSI	Price Each
2	F02091400K	250	\$193.00
3	F03091400K	250	268.00
4	F04091400K	250	357.00
4 *	F04091400L	350	504.50
6	F06091400K	250	774.00
6 *	F06091400L	350	919.50
8	F08091400I	250	1787.00
8 *	F08091400L	350	2068.00
10 (f)	F10091400G	160	3248.00
12 (f)	F12091400G	160	4636.50

NOTE: Items listed in shaded areas are non-cancellable and non-returnable.

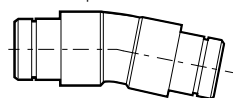
* High pressure nipple

(f) = Fabricated fitting

Series 29102

MALE X MALE 11¼° ELBOW

Refer to publication 50.01



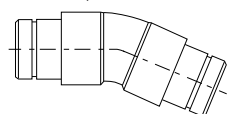
Size inches	Victaulic Part No.	PSI	Price Each
2	F02091020K	250	\$238.50
3	F03091020K	250	428.50
4	F04091020K	250	556.00
6	F06091020K	250	908.00
8	F08091020I	200	1320.50
10	F10091020G	160	2193.00
12	F12091020G	160	3119.00

NOTE: Items listed in shaded areas are non-cancellable and non-returnable.

Series 2911

MALE X MALE 22½° ELBOW

Refer to publication 50.01



Size inches	Victaulic Part No.	PSI	Price Each
2	F02091100K	250	\$256.00
3	F03091100K	250	432.00
4	F04091100K	250	622.00
6	F06091100K	250	1179.50
8	F08091100I	200	1320.50
10	F10091100G	160	2193.00
12	F12091100G	160	3119.00

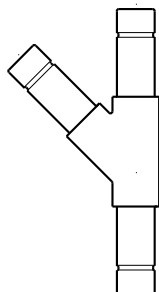
NOTE: Items listed in shaded areas are non-cancellable and non-returnable.

Aquamine™ Products and Pipe

Aqua Link

MALE X MALE X MALE LATERAL WYE

Contact Victaulic for Details.



Size inches	Victaulic Part No.	PSI	Price Each
2	F02091790K	235	\$432.00
3	F03091790K	150	1208.00
4	F04091790K	150	1767.00
6	F06091790K	150	2018.00
8	F08091790I	100	4455.00
10	F10091790G	100	7180.00
12	F12091790G	100	9353.50

NOTE: Items listed in shaded areas are non-cancellable and non-returnable.

Series 2915

MALE END CAP

Refer to publication 50.01



Size inches	Victaulic Part No.	PSI	Price Each
2	F02091500K	250	\$127.50
3	F03091500K	250	219.00
4	F04091500K	250	401.00
6	F06091500K	250	876.50
8	F08091500I	200	1091.00
10	F10091500G	160	1806.50
12	F12091500G	160	2623.00

NOTE: Items listed in shaded areas are non-cancellable and non-returnable.

Series 2916

MALE X FLANGED ADAPTER NIPPLE

Refer to publication 50.01



Size inches	Victaulic Part No.	PSI	Price Each
2	F02091600F	150	\$193.00
3	F03091600F	150	268.50
4	F04091600F	150	327.00
6	F06091600F	150	538.50
8	F08091600F	150	779.50
10	F10091600F	150	1579.50
12	F12091600F	150	2103.50

NOTE: Items listed in shaded areas are non-cancellable and non-returnable.

Aquamine™ Products and Pipe

Series 2917

MALE X MALE X MALE TEE

Refer to publication 50.01



Size inches	Victaulic Part No.	PSI	Price Each
2	F02091700K	250	\$271.00
3	F03091700K	250	415.00
4	F04091700K	250	583.00
6	F06091700K	250	1080.50
8	F08091700I	200	1908.00
10	F10091700G	160	4549.50
12	F12091700G	160	6423.50

NOTE: Items listed in shaded areas are non-cancellable and non-returnable.

Series 2918

MALE X MALE X MALE REDUCING TEE

Refer to publication 50.01



Size inches	Victaulic Part No.	PSI	Price Each
3 x 3 x 2	FC6891800K	250	\$457.50
4 x 4 x 2	FD7491800K	250	744.00
	FD7991800K	250	799.00
6 x 6 x 2	FF0191800K	250	1480.50
	FF0591800K	250	1527.00
	FF0991800K	250	1397.00
8 x 8 x 4	FF6891800I	200	2573.00
	FF7391800I	200	2418.00

NOTE: Items listed in shaded areas are non-cancellable and non-returnable.

Series 2919

FEMALE X MALE REDUCER

Refer to publication 50.01



Size inches	Victaulic Part No.	PSI	Price Each
3 x 2	FC439190IK	250	\$329.00
4 x 2	FD299190IK	250	368.00
	FD449190IK	250	389.00
6 x 2	FE619190IK	250	802.00
	FE719190IK	250	829.00
	FE799190IK	250	855.50
8 x 2	FF309190II	200	1179.50
	FF389190II	200	1179.50
	FF479190II	200	1145.50
10 x 8	FF969190IG	160	2888.00
12 x 8	FG359190IG	160	3271.50

NOTE: Items listed in shaded areas are non-cancellable and non-returnable.

Aquamine™ Products and Pipe

Series 2920

MALE X SOLVENT CEMENT FEMALE TRANSITION FITTING

Refer to publication 50.01



Size inches	Victaulic Part No.	PSI	Price Each
2	F02092000K	250	\$117.00
3	F03092000K	250	156.50
4	F04092000K	250	193.00
6	F06092000K	250	314.00
8	F08092000I	200	561.00
10	F10092000G	160	848.00
12	F12092000G	160	990.00

NOTE: Items listed in shaded areas are non-cancellable and non-returnable.

Series 2940

FEMALE X MALE TRANSITION WITH FEMALE NPT OUTLET

Refer to publication 50.01



Size inches	Victaulic Part No.	PSI	Price Each
2 x 2 x 3/4	FB729400IK	250	\$196.50
1	FB739410IK	250	207.00
3 x 3 x 3/4	FC609400IK	250	253.00
1	FC629410IK	250	253.00
1 1/2	FC649430IJ	240	259.00
4 x 4 x 3/4	FD669400IK	250	294.50
1	FD679410IK	250	294.50
1 1/2	FD729430IJ	240	305.00
6 x 6 x 3/4	FK209400IK	250	504.50
1	FE999410IK	250	504.50
1 1/2	FF009430IJ	240	504.50
2	FF019440II	200	504.50
8 x 8 x 3/4	FF589400II	200	821.00
1	FF599410II	200	821.00
1 1/2	FF619430II	200	821.00
2	FF629440II	200	821.00
10 x 10 x 3/4	FG029400IG	160	1068.00
1	FG039410IG	160	1077.00
1 1/2	FG059430IG	160	1090.50
2	FG069440IG	160	1134.00
12 x 12 x 3/4	FG469400IG	160	1663.00
1	FG479410IG	160	1663.00
1 1/2	FG499430IG	160	1663.00
2	FG509440IG	160	1663.00

NOTE: Items listed in shaded areas are non-cancellable and non-returnable.

Aquamine™ Products and Pipe

Series 2957

AQUAMINE™ BUTTERFLY VALVE



Size inches	Series 2957 with Lever Handle		Series 2957 with Gear Operator	
	Victaulic Part No.	Price Each	Victaulic Part No.	Price Each
2	V020957PE2	\$1171.50	V020957PE3	\$2760.00
3	V030957PE2	1531.00	V030957PE3	3119.50
4	V040957PE2	1971.00	V040957PE3	3559.50
6	V060957PE2	3282.50	V060957PE3	4871.00
8	V080957PE2	4266.50	V080957PE3	5854.50

NOTE: Items listed in shaded areas are non-cancellable and non-returnable.

Splines

(STRAWS)

Refer to publication 50.01

Size inches	Victaulic Part No.	Price Each
2	P02099900K	\$19.80
3	P03099900K	25.35
4	P04099900K	30.60
4 *	P04099900L	48.25
6	P06099900K	34.15
6 *	P06099900L	58.70
8	P08099900I	46.35
8 *	P08099900L	81.65
10	P10099900I	115.00
12	P12099900I	115.00

NOTE: Items listed in shaded areas are non-cancellable and non-returnable.

* High pressure spline

O-rings

Refer to publication 50.01

Size inches	Victaulic Part No.	Price Each
2	G0209999IK	\$7.95
3	G0309999IK	15.30
4	G0409999IK	19.80
4 *	G0409999IL	19.80
6	G0609999IL	25.40
6 *	G0609999IL	25.40
8	G0809999IL	29.40
8 *	G0809999IL	29.40
10	G1009999II	34.45
12	G1209999II	48.60

NOTE: Items listed in shaded areas are non-cancellable and non-returnable.

* High pressure o-ring

Aquamine™ Products and Pipe

Replacement Gaskets
for Style 2970 and
Style 2971

GASKETS

Size inches	Victaulic Part No.	Price Each
2	G020099LT0	\$120.00
3	G030099LT0	139.00 ^{NR}
4	G040099LT0	199.00
6	G060099LT0	284.50
8	G080099LT0	368.00

NOTE: Items listed in shaded areas are non-cancellable and non-returnable.

^{NR} Non-returnable

Replacement
Hardware for Style
2970, Style 2971, and
Style 2972

BOLTS AND NUTS

Coupling Size inches	Victaulic Part No.	Bolt and Nut Size inches	Price Each
2	BA42000Z10	$\frac{1}{2} \times 2\frac{1}{2}$	\$52.00 ^{NR}
3	BA43000Z10	$\frac{1}{2} \times 2\frac{3}{4}$	52.00 ^{NR}
4	BA43000Z10	$\frac{1}{2} \times 2\frac{3}{4}$	52.00 ^{NR}
6	BA53000Z10	$\frac{5}{8} \times 3\frac{1}{4}$	56.50 ^{NR}
8	BA53000Z10	$\frac{5}{8} \times 3\frac{1}{4}$	56.50 ^{NR}

^{NR} Non-returnable

Spline Insertion Tool

SPLINE INSERTION TOOL



Size inches	Victaulic Part No.	Price Each
2	T02091880K	\$656.00
3 – 8	T03091880L	656.00
10 – 12	T10091880K	656.00

NOTE: Items listed in shaded areas are non-cancellable and non-returnable.

APG Tool

AQUAMINE™ GROOVING TOOL FOR PVC PIPE

Refer to publication 50.01



Description	Part Number	Price Each
Aquamine PVC Pipe Groover	T000413APG	\$20046.50
4"/6" Replacement Cutter Blade	TK04413MCH	4242.50
8" Replacement Cutter Blade	TK08413MCH	4242.50
10"/12" Replacement Cutter Blade	TK12413MCH	4242.50

NOTE: Items listed in shaded areas are non-cancellable and non-returnable.

1.0 TERMS AND CONDITIONS OF SALE

No alteration, modification or waiver of these terms and conditions whether on Customer's purchase order or otherwise shall be valid unless the alteration, modification or waiver is specifically accepted in writing by an authorized representative of Victaulic. These terms and conditions are subject to change without notice:

1. **Prices:** Quoted are subject to change at any time unless specifically stated within the price quotation.
2. **Force Majeure:** Victaulic shall not be liable for any delay or failures in making delivery where occasioned by strikes or differences with workmen or by any causes beyond the control of Victaulic, such as but not limited to, fires, floods, accidents, epidemic, action of any government authority, or shortages of labor, raw materials, production facilities or transportation.
3. **Product Changes:** Victaulic reserves the right to alter, modify, or redesign its products without liability for obsolescence.
4. **Taxes:** All federal, state or local sales or use of similar taxes shall be for the Customer's account.
5. **Terms: Pipe and fittings, solvent, lubricant and other accessories:** Our standard terms are net 30 days. The seller reserves the right to charge 1½% monthly service charge (or the maximum permitted by law), of any past due, unpaid balances.
6. **List Price: Discount or Freight Changes:** List prices of pipe, fittings, etc., discounts and freight terms are subject to change without notice.
7. **Order Acceptance or Rejection:** Victaulic reserves the right to accept or reject any order. Possession of a price list does not constitute an offer to sell.
8. **Credit Approval:** Customer credit approval is required prior to any shipments. Should customer's financial responsibility become unsatisfactory, cash payments or satisfactory security may be required prior to delivery.
9. **Shipping Terms:** Aquamine pipe is shipped in convenient 20-foot lengths and is packaged in palletized units. Shipping and handling charges will be paid by the customer F.O.B. Victaulic's facility in Bristol, TN. The most economical rate and routing to recognized delivery points will be used at our discretion. Any order amounts for Aquamine pipe which do not constitute even "Fast Pack" quantities, as defined in the current Aquamine catalog will be subject to a \$35 per pack "Broken Pack" surcharge. This amount will be charged for each pack on each order, which fails to meet the standard packaging criteria. The broken pack charge will be calculated and assessed in addition to any other shipping fees or surcharges. Where customer requests special packaging or handling, the additional cost will be billed to the customer.
10. **Damage, Loss or Shortage Claims:** Upon receipt of order, customer must check for accountability and acceptability of goods. Any damage, loss or shortage should be reported to the driver and noted on his billing papers.

In the event that a common carrier is retained by Victaulic on Customer's behalf to deliver shipments to customer's requested point of delivery, the risk of any damage or loss to said shipment shall pass to the Customer upon delivery of the shipment by Victaulic to the carrier even though Victaulic may agree to be responsible for the costs of shipment. Shipments must be inspected for damage or loss or shortage upon receipt by consignee prior to acceptance from the carrier. Any damage or loss claims must be made to the carrier. Victaulic will not be liable in any manner for damage or loss caused to a shipment by a common carrier. Shortage of material claims regardless of "mode of shipment" must be submitted in writing to Victaulic within 30 days of invoice date.
11. **Cancellation:** Non-Standard or customer produced pipe and/or fittings are not subject to Customer's cancellation once production has begun.
12. **Non-Standard Products:**

Definition A. Piping: This is a piping product which the plant servicing the customer has the capability of producing but does not inventory, or does not have the capability of producing. In these instances, the customer should check for availability and minimum quantity required to process order.

Definition B. Fittings: As defined on the price pages, or those "welded-up" especially for the Customer. Fittings not shown by Victaulic which must be specially fabricated must be submitted for consideration, advising quantity and pertinent details, through your local sales representative for availability and pricing.
13. **Returned Materials:** Forward individual request to Victaulic. Materials cannot be returned without prior approval and written authorization issued by Victaulic. Material returned without prior approval and written authorization will not be accepted at the plant. A restocking charge and freight costs of returned material (and out-freight if applicable) will be charged to the account of the customer.

In addition, the Victaulic Quality Control Department will determine acceptability of returned material for restocking and resalability. Credit will be issued on resalable material only.
14. **Delivery:** Quoted deliveries are based on estimates at the time of quotation. Victaulic will devote its best efforts to meeting delivery schedules but assumes no liability for additional direct, consequential, or incidental costs or damages resulting from late deliveries.

2.0 LIMITED WARRANTY

What is Covered: This warranty covers any defects in materials or workmanship in Standard products, and defects in dimensional requirements of Non-Standard products sold by Victaulic occurring under normal conditions of use and service with the exceptions stated below.

How Long Coverage Lasts: This warranty runs for six months from the date of delivery to the original buyer.

What is Not Covered: This warranty shall not apply to any product which has been subject to misuse, negligence, or accident (such as, without limitation, exposure to incompatible chemical or corrosive agents including microbial corrosion), which has been repaired or altered in any manner outside of Victaulic's factory, or which has been used in a manner contrary to Victaulic's instructions or recommendations. Because Victaulic cannot be assured that solvent weld pipe will be installed by persons fully acquainted with proper installation techniques and the limitations upon such techniques caused by variations in installation conditions, Victaulic DOES NOT WARRANT AND WILL NOT BE RESPONSIBLE OR LIABLE FOR ANY EXPENSES, DAMAGES OR LOSSES WHATSOEVER CAUSED BY, OR RELATED TO THE FAILURE OF ANY SOLVENT WELD JOINT OR BY DEFECTIVE SOLVENT USED IN MAKING ANY SUCH JOINT OTHER THAN SUCH JOINTS MADE BY VICTAULIC AT VICTAULIC'S FACILITIES. **Victaulic shall not be responsible for design errors due to inaccurate or incomplete information supplied by Buyer or its representatives.**

What Victaulic will do: Victaulic will repair or replace, at its option, any product that proves to be defective in materials, workmanship, or dimensional requirements as set forth following an examination by Victaulic that shows to its satisfaction the product was defective in materials or workmanship.

THIS LIMITED WARRANTY IS EXCLUSIVE AND MADE EXPRESSLY IN LIEU OF ANY OTHER WARRANTIES, EXPRESS OR IMPLIED, INCLUDING ANY IMPLIED WARRANTY OF MERCHANTABILITY OR FITNESS FOR A PARTICULAR PURPOSE. THE BUYER'S SOLE AND EXCLUSIVE REMEDY SHALL BE FOR THE REPAIR OR REPLACEMENT OF DEFECTIVE PRODUCTS AS PROVIDED HEREIN. THE BUYER AGREES THAT NO OTHER REMEDY (INCLUDING, BUT NOT LIMITED TO, INCIDENTAL OR CONSEQUENTIAL DAMAGES FOR LOST PROFITS, LOST SALES, INJURY TO PERSON OR PROPERTY OR ANY OTHER INCIDENTAL OR CONSEQUENTIAL LOSS) SHALL BE AVAILABLE.

Victaulic neither assumes nor authorizes any person to assume for it any other liability in connection with the sale of products.

Items purchased by Victaulic and resold will have the original equipment manufacturer's warranty extended to Victaulic customers.

How to Get Service: Contact Victaulic at 610-559-3300 within six months after delivery to the original buyer to arrange for an examination of the product. You will be asked to ship the product to Victaulic's factory, postage and transportation charges prepaid, for examination. There is no charge for examination. Victaulic will examine the product and contact you within a reasonable time regarding the results of that examination and to arrange for repair or replacement of any product determined to be defective in materials or workmanship.

PRODUCTS & PIPE

AQUAMINE PRICE LIST



U.S./World Headquarters

4901 Kesslersville Road
Easton, PA 18040 USA

◀ victauliclocations.com

EMEA

Prijkelstraat 36
9810 Nazareth, Belgium

Asia Pacific

Unit 808, Building B
Hongwell International Plaza
No.1602 West Zhongshan Road
Shanghai, China 200235



PL2025-A-AMP 21925 REV A 06/2025

Victaulic and all other Victaulic marks are the trademarks or registered trademarks of Victaulic Company, and/or its affiliated entities, in the U.S. and/or other countries. All other trademarks listed herein are the property of their respective holders, in the U.S. and/or other countries. The terms "Patented" or "Patent Pending" refer to design or utility patents or patent applications for articles and/or methods of use in the United States and/or other countries.

© 2025 VICTAULIC COMPANY. ALL RIGHTS RESERVED.

