



PRODUCTS AND PIPE

# AQUAMINE PRICE LIST

PL2025-AMP  
Effective March 1, 2025



# ENGINEERING CONFIDENCE INTO EVERY BUILD



Around the world and across diverse business lines, Victaulic provides durable pipe joining solutions that solve the construction industry's toughest challenges.

Since 1919, Victaulic's innovative piping products and design services continue to **increase construction productivity** and **reduce risk, ensuring projects are completed safely, on time and within budget.**

With more than 40 international facilities, Victaulic helps customers in 140 countries succeed in the global construction industry.

FIRE PROTECTION | HVAC | PLUMBING | OIL & GAS | MINING | WATER & WASTEWATER | POWER GENERATION | MARITIME



[victaulic.com](http://victaulic.com)

© 2024 VICTAULIC COMPANY. ALL RIGHTS RESERVED.  
Source: skyscrapercenter.com and the Council on Tall Buildings and Urban Habitat



# Table of Contents

---

## Pipe

Series 2900 Aquamine™ PVC Pipe with Coupling . . . . .	2
Series 2900 Aquamine™ PVC Pipe With Beveled Coupling . . . . .	2
Aquamine™ Pipe . . . . .	2

## Couplings

Series 2904 Aquamine™ Female to Female Coupling . . . . .	3
Aquamine™ Female to Female Beveled Coupling . . . . .	3
Series 2905 Aquamine™ Female to Solvent Cement Female Coupling . . . . .	3
Series 2930 Aquamine™ Female to Female NPT Female Outlet Coupling . . . . .	4
Series 2937, Series 2938, and Series 2939 Female to Female Coupling with Female NPT Formed Outlet . . . . .	4
Style 2970 Aquamine™ Coupling for Plain End PVC . . . . .	5
Style 2971 Aquamine™ Transition Coupling for PVC to HDPE . . . . .	5
Style 2972 Aquamine™ Transition Coupling for PVC to Groove . . . . .	5

## Fittings

Series 2906 Male x Plain End Male Adapter Nipple . . . . .	5
Series 2907 Male x Victaulic® OGS Groove Adapter Nipple . . . . .	6
Series 2908 Male x Male NPT Adapter Nipple . . . . .	6
Series 2909 Plain End Male x Male NPT Adapter Nipple . . . . .	6
Series 2910 Male x Male 90° Elbow . . . . .	7
Series 2912 Male x Male 45° Elbow . . . . .	7
Series 2913 Male x Male 90° Sweep . . . . .	7
Series 2914 Male x Male 45° Sweep . . . . .	8

Series 29102 Male x Male 11¼° Elbow . . . . .	8
Series 2911 Male x Male 22½° Elbow . . . . .	8
Aqua Link Male x Male x Male Lateral Wye . . . . .	9
Series 2915 Male End Cap . . . . .	9
Series 2916 Male x Flanged Adapter Nipple . . . . .	9
Series 2917 Male x Male x Male Tee . . . . .	10
Series 2918 Male x Male x Male Reducing Tee . . . . .	10
Series 2919 Female x Male Reducer . . . . .	10
Series 2920 Male x Solvent Cement Female Transition Fitting . . . . .	11
Series 2940 Female x Male Transition with Female NPT Outlet . . . . .	11

## Valves

Series 2957 Aquamine™ Butterfly Valve . . . . .	12
---	----

## Spare Parts

Splines . . . . .	12
O-rings . . . . .	12
Replacement Gaskets for Style 2970 and Style 2971 . . . . .	13
Replacement Hardware for Style 2970, Style 2971, and Style 2972 . . . . .	13

## Tools

Spline Insertion Tool . . . . .	13
APG Aquamine™ Grooving Tool for PVC Pipe . . . . .	13
Terms and Conditions of Sale . . . . .	Inside Back Cover
Warranty . . . . .	Inside Back Cover

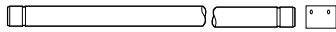
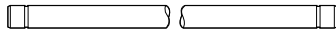
# Aquamine™ Products and Pipe

## Series 2900

**AQUAMINE™ PVC PIPE WITH COUPLING**

**AQUAMINE™ PVC PIPE WITH BEVELED COUPLING**

Refer to publication 50.01



Size inches	Victaulic Part No.		Standard Dimension Ratio	PSI	Price per Foot
	Pipe with Coupling	Pipe with Beveled Coupling	(SDR)		
2	T0209000IK	T0209002IK	17	250	\$15.40
2	T0209000II	T0209002II	21	200	14.20
3	T0309000IK	T0309002IK	17	250	28.20
3	T0309000II	T0309002II	21	200	25.05
4	T0409000IL	T0409002IL	12.4	350	55.95
4	T0409000IK	T0409002IK	17	250	44.10
4	T0409000II	T0409002II	21	200	37.70
4	T0409000IG	T0409002IG	26	160	33.20
6	T0609000IL	T0609002IL	12.4	350	115.70
6	T0609000IK	T0609002IK	17	250	82.90
6	T0609000II	T0609002II	21	200	69.45
6	T0609000IG	T0609002IG	26	160	62.70
8	T0809000IL	T0809002IL	12.4	350	190.10
8	T0809000IK	T0809002IK	17	250	150.25
8	T0809000II	T0809002II	21	200	123.85
8	T0809000IG	T0809002IG	26	160	105.50
10	T1009000IG	T1009002IG	26	160	162.15
12	T1209000IG	T1209002IG	26	160	218.75

**NOTE: Items listed in shaded areas are non-cancellable and non-returnable.**

## Aquamine™ Pipe Only

Refer to publication 50.01

Size inches	Victaulic Part No.	Standard Dimension Ratio (SDR)	PSI	Price per Foot
2	T02090100K	17	250	\$11.35
2	T02090100I	21	200	10.05
3	T03090100K	17	250	22.50
3	T03090100I	21	200	18.90
4	T04090100L	12.4	350	43.45
4	T04090100K	17	250	35.75
4	T04090100I	21	200	30.00
4	T04090100G	26	160	25.05
6	T06090100L	12.4	350	96.05
6	T06090100K	17	250	70.25
6	T06090100I	21	200	57.25
6	T06090100G	26	160	50.10
8	T08090100L	12.4	350	158.50
8	T08090100K	17	250	123.25
8	T08090100I	21	200	100.35
8	T08090100G	26	160	82.30
10	T10090100G	26	160	127.90
12	T12090100G	26	160	173.35

**NOTE: Items listed in shaded areas are non-cancellable and non-returnable.**

# Aquamine™ Products and Pipe

## Series 2904

### AQUAMINE™ FEMALE TO FEMALE COUPLING

Refer to publication 50.01



Size inches	Victaulic Part No.	PSI	Price Each
2	C0209040IK	250	\$90.50
3	C0309040IK	250	123.50
4	C0409040IK	250	156.50
4 *	C0409040IL	350	241.50
6	C0609040IK	250	237.50
6 *	C0609040IL	350	365.00
8	C0809040II	200	436.00
8 †	C0809040IK	250	506.50
8 *	C0809040IL	350	582.00
10	C1009040IG	160	631.00
12	C1209040IG	160	837.00

**NOTE: Items listed in shaded areas are non-cancellable and non-returnable.**

\* High pressure coupling

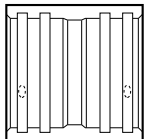
† Coupling with high pressure spline

## Series 2904

### AQUAMINE™ FEMALE TO FEMALE BEVELED COUPLING

For Directional Drilling and other applications where pipe is pulled

Refer to publication 50.01



Size inches	Victaulic Part No.	PSI	Price Each
2	C0209041IK	250	\$90.50
3	C0309041IK	250	123.50
4	C0409041IK	250	156.50
4 *	C0409041IL	350	241.50
6	C0609041IK	250	237.50
6 *	C0609041IL	350	365.00
8	C0809041II	200	436.00
8 †	C0809041IK	250	506.50
8 *	C0809041IL	350	582.00
10	C1009041IG	160	631.00
12	C1209041IG	160	837.00

**NOTE: Items listed in shaded areas are non-cancellable and non-returnable.**

\* High pressure coupling

† Coupling with high pressure spline

## Series 2905

### AQUAMINE™ FEMALE TO SOLVENT CEMENT FEMALE COUPLING

Refer to publication 50.01



Size inches	Victaulic Part No.	PSI	Price Each
2	C0209050IK	250	\$72.50
3	C0309050IK	250	99.00
4	C0409050IK	250	122.00
6	C0609050IK	250	203.00
8	C0809050II	200	377.00
10	C1009050IG	160	583.00
12	C1209050IG	160	755.50

**NOTE: Items listed in shaded areas are non-cancellable and non-returnable.**

# Aquamine™ Products and Pipe

## Series 2930

**AQUAMINE™ FEMALE TO FEMALE NPT FEMALE OUTLET COUPLING**

(Tapped Female Pipe Threads)

Refer to publication 50.01



Size inches				Victaulic Part No.	PSI	Price Each	
2	x	2	x	$\frac{3}{4}$	CB729300II	200	\$122.00
				1	CB739310II	200	122.00
3	x	3	x	$\frac{3}{4}$	CC609300II	200	163.50
				1	CC629310II	200	163.50
				$1\frac{1}{2}$	CC649330IG	160	163.50
4	x	4	x	$\frac{3}{4}$	CD669300II	200	198.00
				1	CD679310II	200	198.00
				$1\frac{1}{2}$	CD729330IG	160	198.00
				2	CD749350IG	160	233.50
6	x	6	x	$\frac{3}{4}$	CK209300II	200	368.50
				1	CE999310II	200	368.50
				$1\frac{1}{2}$	CF009330II	200	368.50
8	x	8	x	$\frac{3}{4}$	CF589300II	200	535.50
				1	CF599310II	200	535.50
				$1\frac{1}{2}$	CF619330II	200	535.50
10	x	10	x	$\frac{3}{4}$	CG029300IG	160	682.50
				1	CG039310IG	160	690.50
				$1\frac{1}{2}$	CG059330IG	160	699.00
12	x	12	x	$\frac{3}{4}$	CG469300IG	160	900.00
				1	CG479310IG	160	909.50
				$1\frac{1}{2}$	CG499330IG	160	916.00
				2	CG509350IG	160	960.00

NOTE: Items listed in shaded areas are non-cancellable and non-returnable.

## Series 2937

## Series 2938

## Series 2939

**FEMALE TO FEMALE COUPLING WITH FEMALE NPT FORMED OUTLET**

Refer to publication 50.04



Size inches				Victaulic Part No.	PSI	Price Each	
2	x	2	x	1	CB739370IK	250	\$163.50
3	x	3	x	1	CC629370IK	250	218.00
				$1\frac{1}{2}$	CC649380IK	250	218.00
4	x	4	x	1	CD679370IK	250	272.00
				$1\frac{1}{2}$	CD729380IK	250	272.00
				2	CD749390IK	250	272.00
6	x	6	x	1	CE999370IK	250	401.00
				$1\frac{1}{2}$	CF009380IK	250	401.00
				2	CF019390IK	250	401.00

NOTE: Items listed in shaded areas are non-cancellable and non-returnable.

# Aquamine™ Products and Pipe

## Style 2970

### AQUAMINE™ COUPLING FOR PLAIN END PVC

Refer to publication 50.01



Size inches	Victaulic Part No. for Coupling with Grade "E" Gasket	Victaulic Part No. for Coupling with Grade "T" Gasket	Price Each
2	C0209700EL	C0209700TL	\$530.00
3	C0309700EL	C0309700TL	616.00
4	C0409700EL	C0409700TL	787.00
6	C0609700EL	C0609700TL	935.50
8	C0809700EL	C0809700TL	1211.00

**NOTE:** Items listed in shaded areas are non-cancellable and non-returnable.

## Style 2971

### AQUAMINE™ TRANSITION COUPLING FOR PVC TO HDPE

Refer to publication 50.05



Size inches	Victaulic Part No. for Coupling with Grade "E" Gasket	Victaulic Part No. for Coupling with Grade "T" Gasket	Price Each
2	C0209710EL	C0209710TL	\$530.00
3	C0309710EL	C0309710TL	616.00
4	C0409710EL	C0409710TL	787.00
6	C0609710EL	C0609710TL	935.50
8	C0809710EL	C0809710TL	1211.00

**NOTE:** Items listed in shaded areas are non-cancellable and non-returnable.

## Style 2972

### AQUAMINE™ TRANSITION COUPLING FOR PVC TO GROOVE

Refer to publication 50.06



Size inches	Victaulic Part No. for Coupling with Grade "T" Gasket	Price Each
2	C0209720TL	\$583.00
3	C0309720TL	680.00
4	C0409720TL	863.00
6	C0609720TL	1028.00
8	C0809720TL	1333.50

**NOTE:** Items listed in shaded areas are non-cancellable and non-returnable.

## Series 2906

### MALE X PLAIN END MALE ADAPTER NIPPLE

Refer to publication 50.01



Size inches	Victaulic Part No.	PSI	Price Each
2	F02090600K	250	\$43.50
3	F03090600K	250	68.50
4	F04090600K	250	89.50
6	F06090600K	250	156.00
8	F08090600I	200	245.00
10	F10090600G	160	377.00
12	F12090600G	160	522.00

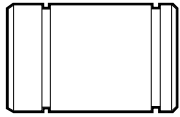
**NOTE:** Items listed in shaded areas are non-cancellable and non-returnable.

# Aquamine™ Products and Pipe

## Series 2907

### MALE X VICTAULIC® OGS GROOVE ADAPTER NIPPLE

Refer to publication 50.01



Size inches	Victaulic Part No.	PSI	Price Each
2	F02090700K	250	\$47.50
3	F03090700K	250	69.00
4	F04090700J	240	90.50
4 *	F04090790L	350	276.00
6	F06090700G	160	158.50
6 *	F06090790L	350	454.00
8	F08090700D	120	253.00
8*	F08090790L	350	657.50
10	F10090700B	100	448.50
12	F12090700A	80	588.50

**NOTE: Items listed in shaded areas are non-cancellable and non-returnable.**

\* High pressure nipple

## Series 2908

### MALE X MALE NPT ADAPTER NIPPLE

Refer to publication 50.01



Size inches	Victaulic Part No.	PSI	Price Each
2	F02090800I	200	\$65.00
2*	F02090890K	250	230.50
3	F03090800H	190	93.00
3*	F03090890L	250	335.00
4	F04090800G	160	131.50
4*	F04090890L	350	392.00
6	F06090800E	140	226.00
6*	F06090890L	350	571.00
8	F08090800D	120	401.00
8*	F08090890L	350	1107.50
10	F10090800D	120	511.00
12	F12090800C	110	657.00

**NOTE: Items listed in shaded areas are non-cancellable and non-returnable.**

\* High pressure nipple

## Series 2909

### PLAIN END MALE X MALE NPT ADAPTER NIPPLE

Refer to publication 50.01



Size inches	Victaulic Part No.	PSI	Price Each
2	F02090900I	200	\$65.00
3	F03090900H	190	93.50
4	F04090900G	160	138.00
6	F06090900E	140	232.00
8	F08090900D	120	405.00
10	F10090900D	120	454.00
12	F12090900C	110	569.00

**NOTE: Items listed in shaded areas are non-cancellable and non-returnable.**



# Aquamine™ Products and Pipe

## Series 2910

**MALE X MALE 90° ELBOW**  
Refer to publication 50.01



Size inches	Victaulic Part No.	PSI	Price Each
2	F02091000K	250	\$181.00
3	F03091000K	250	252.00
4	F04091000K	250	408.00
6	F06091000K	250	644.00
8	F08091000I	200	1232.50
10	F10091000G	160	3117.50
12	F12091000G	160	4969.00

**NOTE: Items listed in shaded areas are non-cancellable and non-returnable.**

## Series 2912

**MALE X MALE 45° ELBOW**  
Refer to publication 50.01



Size inches	Victaulic Part No.	PSI	Price Each
2	F02091200K	250	\$181.50
3	F03091200K	250	289.50
4	F04091200K	250	440.50
6	F06091200K	250	726.50
8	F08091200I	200	1243.00
10	F10091200G	160	2365.00
12	F12091200G	160	3342.50

**NOTE: Items listed in shaded areas are non-cancellable and non-returnable.**

## Series 2913

**MALE X MALE 90° SWEEP**  
Refer to publication 50.01



Size inches	Victaulic Part No.	PSI	Price Each
2	F02091300K	250	\$251.50
3	F03091300K	250	339.00
4	F04091300K	250	530.00
4 *	F04091300L	350	733.00
6	F06091300K	250	1180.00
6 *	F06091300L	350	1503.00
8	F08091300I	250	1900.00
8 *	F08091300L	350	2121.00
10	F10091300G	160	4204.00
12 (f)	F12091300G	160	5740.00

**NOTE: Items listed in shaded areas are non-cancellable and non-returnable.**

\* High pressure nipple

(f) = Fabricated fitting

# Aquamine™ Products and Pipe

## Series 2914

**MALE X MALE 45° SWEEP**  
Refer to publication 50.01



Size inches	Victaulic Part No.	PSI	Price Each
2	F02091400K	250	\$181.00
3	F03091400K	250	251.50
4	F04091400K	250	335.00
4 *	F04091400L	350	473.50
6	F06091400K	250	726.50
6 *	F06091400L	350	863.00
8	F08091400I	250	1677.50
8 *	F08091400L	350	1941.50
10 (f)	F10091400G	160	3049.50
12 (f)	F12091400G	160	4353.50

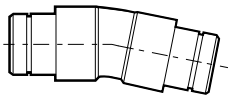
**NOTE: Items listed in shaded areas are non-cancellable and non-returnable.**

\* High pressure nipple

(f) = Fabricated fitting

## Series 29102

**MALE X MALE 11¼° ELBOW**  
Refer to publication 50.01

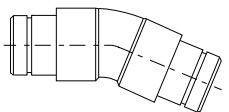


Size inches	Victaulic Part No.	PSI	Price Each
2	F02091020K	250	\$223.50
3	F03091020K	250	402.00
4	F04091020K	250	522.00
6	F06091020K	250	852.50
8	F08091020I	200	1239.50
10	F10091020G	160	2059.00
12	F12091020G	160	2928.50

**NOTE: Items listed in shaded areas are non-cancellable and non-returnable.**

## Series 2911

**MALE X MALE 22½° ELBOW**  
Refer to publication 50.01



Size inches	Victaulic Part No.	PSI	Price Each
2	F02091100K	250	\$240.00
3	F03091100K	250	405.50
4	F04091100K	250	584.00
6	F06091100K	250	1107.50
8	F08091100I	200	1239.50
10	F10091100G	160	2059.00
12	F12091100G	160	2928.50

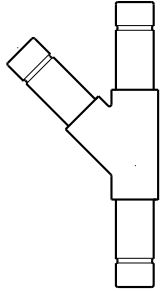
**NOTE: Items listed in shaded areas are non-cancellable and non-returnable.**

# Aquamine™ Products and Pipe

## Aqua Link

### MALE X MALE X MALE LATERAL WYE

Contact Victaulic for Details.



Size inches	Victaulic Part No.	PSI	Price Each
2	F02091790K	235	\$405.50
3	F03091790K	150	1134.00
4	F04091790K	150	1659.00
6	F06091790K	150	1894.50
8	F08091790I	100	4183.00
10	F10091790G	100	6741.50
12	F12091790G	100	8782.50

**NOTE:** Items listed in shaded areas are non-cancellable and non-returnable.

## Series 2915

### MALE END CAP

Refer to publication 50.01



Size inches	Victaulic Part No.	PSI	Price Each
2	F02091500K	250	\$119.50
3	F03091500K	250	205.50
4	F04091500K	250	376.50
6	F06091500K	250	823.00
8	F08091500I	200	1024.00
10	F10091500G	160	1696.00
12	F12091500G	160	2462.50

**NOTE:** Items listed in shaded areas are non-cancellable and non-returnable.

## Series 2916

### MALE X FLANGED ADAPTER NIPPLE

Refer to publication 50.01



Size inches	Victaulic Part No.	PSI	Price Each
2	F02091600F	150	\$181.00
3	F03091600F	150	252.00
4	F04091600F	150	307.00
6	F06091600F	150	505.50
8	F08091600F	150	731.50
10	F10091600F	150	1483.00
12	F12091600F	150	1975.00

**NOTE:** Items listed in shaded areas are non-cancellable and non-returnable.

# Aquamine™ Products and Pipe

## Series 2917

**MALE X MALE X MALE TEE**  
Refer to publication 50.01



Size inches	Victaulic Part No.	PSI	Price Each
2	F02091700K	250	\$254.00
3	F03091700K	250	389.50
4	F04091700K	250	547.00
6	F06091700K	250	1014.50
8	F08091700I	200	1791.50
10	F10091700G	160	4271.50
12	F12091700G	160	6031.00

**NOTE:** Items listed in shaded areas are non-cancellable and non-returnable.

## Series 2918

**MALE X MALE X MALE REDUCING TEE**  
Refer to publication 50.01



Size inches	Victaulic Part No.	PSI	Price Each
3 x 3 x 2	FC6891800K	250	\$429.50
4 x 4 x 2	FD7491800K	250	698.50
	FD7991800K	250	750.00
6 x 6 x 2	FF0191800K	250	1390.00
	FF0591800K	250	1433.50
	FF0991800K	250	1311.50
8 x 8 x 4	FF6891800I	200	2415.50
	FF7391800I	200	2270.00

**NOTE:** Items listed in shaded areas are non-cancellable and non-returnable.

## Series 2919

**FEMALE X MALE REDUCER**  
Refer to publication 50.01



Size inches	Victaulic Part No.	PSI	Price Each
3 x 2	FC439190IK	250	\$308.50
4 x 2	FD299190IK	250	345.50
	FD449190IK	250	365.00
6 x 2	FE619190IK	250	753.00
	FE719190IK	250	778.00
	FE799190IK	250	803.00
8 x 2	FF309190II	200	1107.50
	FF389190II	200	1107.50
	FF479190II	200	1075.50
10 x 8	FF969190IG	160	2711.50
12 x 8	FG359190IG	160	3071.50

**NOTE:** Items listed in shaded areas are non-cancellable and non-returnable.

# Aquamine™ Products and Pipe

## Series 2920

### MALE X SOLVENT CEMENT FEMALE TRANSITION FITTING

Refer to publication 50.01



Size inches	Victaulic Part No.	PSI	Price Each
2	F02092000K	250	\$109.50
3	F03092000K	250	146.50
4	F04092000K	250	181.00
6	F06092000K	250	294.50
8	F08092000I	200	526.50
10	F10092000G	160	796.00
12	F12092000G	160	929.50

**NOTE:** Items listed in shaded areas are non-cancellable and non-returnable.

## Series 2940

### FEMALE X MALE TRANSITION WITH FEMALE NPT OUTLET

Refer to publication 50.01



Size inches	Victaulic Part No.	PSI	Price Each
2 x 2 x $\frac{3}{4}$	FB729400IK	250	\$184.50
	FB739410IK	250	194.00
3 x 3 x $\frac{3}{4}$	FC609400IK	250	237.50
	FC629410IK	250	237.50
	FC649430IJ	240	243.00
4 x 4 x $\frac{3}{4}$	FD669400IK	250	276.50
	FD679410IK	250	276.50
	FD729430IJ	240	286.00
6 x 6 x $\frac{3}{4}$	FK209400IK	250	473.50
	FE999410IK	250	473.50
	FF009430IJ	240	473.50
8 x 8 x $\frac{3}{4}$	FF589400II	200	770.50
	FF599410II	200	770.50
	FF619430II	200	770.50
10 x 10 x $\frac{3}{4}$	FF629440II	200	770.50
	FG029400IG	160	1002.50
	FG039410IG	160	1011.00
12 x 12 x $\frac{3}{4}$	FG059430IG	160	1023.50
	FG069440IG	160	1064.50
	FG469400IG	160	1561.50
1	FG479410IG	160	1561.50
	FG499430IG	160	1561.50
	FG509440IG	160	1561.50

**NOTE:** Items listed in shaded areas are non-cancellable and non-returnable.

# Aquamine™ Products and Pipe

## Series 2957

### AQUAMINE™ BUTTERFLY VALVE



Size inches	Series 2957 with Lever Handle		Series 2957 with Gear Operator	
	Victaulic Part No.	Price Each	Victaulic Part No.	Price Each
2	V020957PE2	\$1100.00	V020957PE3	\$2591.50
3	V030957PE2	1437.50	V030957PE3	2929.00
4	V040957PE2	1850.50	V040957PE3	3342.00
6	V060957PE2	3082.00	V060957PE3	4573.50
8	V080957PE2	4006.00	V080957PE3	5497.00

**NOTE:** Items listed in shaded areas are non-cancellable and non-returnable.

## Splines

### (STRAWS)

Refer to publication 50.01

Size inches	Victaulic Part No.	Price Each
2	P02099900K	\$18.55
3	P03099900K	23.80
4	P04099900K	28.70
4 *	P04099900L	45.30
6	P06099900K	32.05
6 *	P06099900L	55.10
8	P08099900I	43.50
8 *	P08099900L	76.65
10	P10099900I	107.95
12	P12099900I	107.95

**NOTE:** Items listed in shaded areas are non-cancellable and non-returnable.

\* High pressure spline

## O-rings

Refer to publication 50.01

Size inches	Victaulic Part No.	Price Each
2	G0209999IK	\$7.45
3	G0309999IK	14.35
4	G0409999IK	18.55
4 *	G0409999IL	18.55
6	G0609999IL	23.85
6 *	G0609999IL	23.85
8	G0809999IL	27.60
8 *	G0809999IL	27.60
10	G1009999II	32.35
12	G1209999II	45.60

**NOTE:** Items listed in shaded areas are non-cancellable and non-returnable.

\* High pressure o-ring

# Aquamine™ Products and Pipe

Replacement Gaskets for Style 2970 and Style 2971

## GASKETS

Size inches	Victaulic Part No.	Price Each
2	G020099LTO	\$112.50
3	G030099LTO	130.50 <sup>NR</sup>
4	G040099LTO	186.50
6	G060099LTO	267.00
8	G080099LTO	345.50

**NOTE:** Items listed in shaded areas are non-cancellable and non-returnable.

<sup>NR</sup> Non-returnable

Replacement Hardware for Style 2970, Style 2971, and Style 2972

## BOLTS AND NUTS

Coupling Size inches	Victaulic Part No.	Bolt and Nut Size inches	Price Each
2	BA42000Z10	1/2 x 2 1/2	\$48.50 <sup>NR</sup>
3	BA43000Z10	1/2 x 2 3/4	48.50 <sup>NR</sup>
4	BA43000Z10	1/2 x 2 3/4	48.50 <sup>NR</sup>
6	BA53000Z10	5/8 x 3 1/4	53.00 <sup>NR</sup>
8	BA53000Z10	5/8 x 3 1/4	53.00 <sup>NR</sup>

<sup>NR</sup> Non-returnable

Spline Insertion Tool

## SPLINE INSERTION TOOL



Size inches	Victaulic Part No.	Price Each
2	T02091880K	\$615.50
3 – 8	T03091880L	615.50
10 – 12	T10091880K	615.50

**NOTE:** Items listed in shaded areas are non-cancellable and non-returnable.

APG Tool

## AQUAMINE™ GROOVING TOOL FOR PVC PIPE

Refer to publication 50.01



Description	Part Number	Price Each
Aquamine PVC Pipe Groover	T000413APG	\$18823.00
4"/6" Replacement Cutter Blade	TK04413MCH	3983.50
8" Replacement Cutter Blade	TK08413MCH	3983.50
10"/12" Replacement Cutter Blade	TK12413MCH	3983.50

**NOTE:** Items listed in shaded areas are non-cancellable and non-returnable.

---

## 1.0 TERMS AND CONDITIONS OF SALE

**No alteration, modification or waiver of these terms and conditions whether on Customer's purchase order or otherwise shall be valid unless the alteration, modification or waiver is specifically accepted in writing by an authorized representative of Victaulic. These terms and conditions are subject to change without notice:**

- 1. Prices:** Quoted are subject to change at any time unless specifically stated within the price quotation.
- 2. Force Majeure:** Victaulic shall not be liable for any delay or failures in making delivery where occasioned by strikes or differences with workmen or by any causes beyond the control of Victaulic, such as but not limited to, fires, floods, accidents, epidemic, action of any government authority, or shortages of labor, raw materials, production facilities or transportation.
- 3. Product Changes:** Victaulic reserves the right to alter, modify, or redesign its products without liability for obsolescence.
- 4. Taxes:** All federal, state or local sales or use of similar taxes shall be for the Customer's account.
- 5. Terms: Pipe and fittings, solvent, lubricant and other accessories:** Our standard terms are net 30 days. The seller reserves the right to charge 1½% monthly service charge (or the maximum permitted by law), of any past due, unpaid balances.
- 6. List Price: Discount or Freight Changes:** List prices of pipe, fittings, etc., discounts and freight terms are subject to change without notice.
- 7. Order Acceptance or Rejection:** Victaulic reserves the right to accept or reject any order. Possession of a price list does not constitute an offer to sell.
- 8. Credit Approval:** Customer credit approval is required prior to any shipments. Should customer's financial responsibility become unsatisfactory, cash payments or satisfactory security may be required prior to delivery.
- 9. Shipping Terms:** Aquamine pipe is shipped in convenient 20-foot lengths and is packaged in palletized units. Shipping and handling charges will be paid by the customer F.O.B. Victaulic's facility in Bristol, TN. The most economical rate and routing to recognized delivery points will be used at our discretion. Any order amounts for Aquamine pipe which do not constitute even "Fast Pack" quantities, as defined in the current Aquamine catalog will be subject to a \$35 per pack "Broken Pack" surcharge. This amount will be charged for each pack on each order, which fails to meet the standard packaging criteria. The broken pack charge will be calculated and assessed in addition to any other shipping fees or surcharges. Where customer requests special packaging or handling, the additional cost will be billed to the customer.
- 10. Damage, Loss or Shortage Claims:** Upon receipt of order, customer must check for accountability and acceptability of goods. Any damage, loss or shortage should be reported to the driver and noted on his billing papers.

In the event that a common carrier is retained by Victaulic on Customer's behalf to deliver shipments to customer's requested point of delivery, the risk of any damage or loss to said shipment shall pass to the Customer upon delivery of the shipment by Victaulic to the carrier even though Victaulic may agree to be responsible for the costs of shipment. Shipments must be inspected for damage or loss or shortage upon receipt by consignee prior to acceptance from the carrier. Any damage or loss claims must be made to the carrier. Victaulic will not be liable in any manner for damage or loss caused to a shipment by a common carrier. Shortage of material claims regardless of "mode of shipment" must be submitted in writing to Victaulic within 30 days of invoice date.

- 11. Cancellation:** Non-Standard or customer produced pipe and/or fittings are not subject to Customer's cancellation once production has begun.
- 12. Non-Standard Products:**

**Definition A. Piping:** This is a piping product which the plant servicing the customer has the capability of producing but does not inventory, or does not have the capability of producing. In these instances, the customer should check for availability and minimum quantity required to process order.

**Definition B. Fittings:** As defined on the price pages, or those "welded-up" especially for the Customer. Fittings not shown by Victaulic which must be specially fabricated must be submitted for consideration, advising quantity and pertinent details, through your local sales representative for availability and pricing.
- 13. Returned Materials:** Forward individual request to Victaulic. Materials cannot be returned without prior approval and written authorization issued by Victaulic. Material returned without prior approval and written authorization will not be accepted at the plant. A restocking charge and freight costs of returned material (and out-freight if applicable) will be charged to the account of the customer.

In addition, the Victaulic Quality Control Department will determine acceptability of returned material for restocking and resalability. Credit will be issued on resalable material only.
- 14. Delivery:** Quoted deliveries are based on estimates at the time of quotation. Victaulic will devote its best efforts to meeting delivery schedules but assumes no liability for additional direct, consequential, or incidental costs or damages resulting from late deliveries.

---

## 2.0 LIMITED WARRANTY

**What is Covered:** This warranty covers any defects in materials or workmanship in Standard products, and defects in dimensional requirements of Non-Standard products sold by Victaulic occurring under normal conditions of use and service with the exceptions stated below.

**How Long Coverage Lasts:** This warranty runs for six months from the date of delivery to the original buyer.

**What is Not Covered:** This warranty shall not apply to any product which has been subject to misuse, negligence, or accident (such as, without limitation, exposure to incompatible chemical or corrosive agents including microbial corrosion), which has been repaired or altered in any manner outside of Victaulic's factory, or which has been used in a manner contrary to Victaulic's instructions or recommendations. Because Victaulic cannot be assured that solvent weld pipe will be installed by persons fully acquainted with proper installation techniques and the limitations upon such techniques caused by variations in installation conditions, Victaulic DOES NOT WARRANT AND WILL NOT BE RESPONSIBLE OR LIABLE FOR ANY EXPENSES, DAMAGES OR LOSSES WHATSOEVER CAUSED BY, OR RELATED TO THE FAILURE OF ANY SOLVENT WELD JOINT OR BY DEFECTIVE SOLVENT USED IN MAKING ANY SUCH JOINT OTHER THAN SUCH JOINTS MADE BY VICTAULIC AT VICTAULIC'S FACILITIES. **Victaulic shall not be responsible for design errors due to inaccurate or incomplete information supplied by Buyer or its representatives.**

**What Victaulic will do:** Victaulic will repair or replace, at its option, any product that proves to be defective in materials, workmanship, or dimensional requirements as set forth following an examination by Victaulic that shows to its satisfaction the product was defective in materials or workmanship.

THIS LIMITED WARRANTY IS EXCLUSIVE AND MADE EXPRESSLY IN LIEU OF ANY OTHER WARRANTIES, EXPRESS OR IMPLIED, INCLUDING ANY IMPLIED WARRANTY OF MERCHANTABILITY OR FITNESS FOR A PARTICULAR PURPOSE. THE BUYER'S SOLE AND EXCLUSIVE REMEDY SHALL BE FOR THE REPAIR OR REPLACEMENT OF DEFECTIVE PRODUCTS AS PROVIDED HEREIN. THE BUYER AGREES THAT NO OTHER REMEDY (INCLUDING, BUT NOT LIMITED TO, INCIDENTAL OR CONSEQUENTIAL DAMAGES FOR LOST PROFITS, LOST SALES, INJURY TO PERSON OR PROPERTY OR ANY OTHER INCIDENTAL OR CONSEQUENTIAL LOSS) SHALL BE AVAILABLE.

Victaulic neither assumes nor authorizes any person to assume for it any other liability in connection with the sale of products.

Items purchased by Victaulic and resold will have the original equipment manufacturer's warranty extended to Victaulic customers.

**How to Get Service:** Contact Victaulic at 610-559-3300 within six months after delivery to the original buyer to arrange for an examination of the product. You will be asked to ship the product to Victaulic's factory, postage and transportation charges prepaid, for examination. There is no charge for examination. Victaulic will examine the product and contact you within a reasonable time regarding the results of that examination and to arrange for repair or replacement of any product determined to be defective in materials or workmanship.



PRODUCTS & PIPE

# AQUAMINE PRICE LIST



## U.S./World Headquarters

4901 Kesslersville Road  
Easton, PA 18040 USA

[victauliclocations.com](http://victauliclocations.com)

## EMEA

Prijkelstraat 36  
9810 Nazareth, Belgium

## Asia Pacific

Unit 808, Building B  
Hongwell International Plaza  
No.1602 West Zhongshan Road  
Shanghai, China 200235



PL2025-AMP 21544 REV A 02/2025

*Victaulic* and all other Victaulic marks are the trademarks or registered trademarks of Victaulic Company, and/or its affiliated entities, in the U.S. and/or other countries. All other trademarks listed herein are the property of their respective holders, in the U.S. and/or other countries. The terms "Patented" or "Patent Pending" refer to design or utility patents or patent applications for articles and/or methods of use in the United States and/or other countries.

© 2025 VICTAULIC COMPANY. ALL RIGHTS RESERVED.

